

June, 1952

A.P.4335, Vol. 6, Part 1

CHAPTER 5

ALIGHTING GEAR

RESTRICTED

Chapter 5 ALIGHTING GEAR

LIST OF CONTENTS

	Para.
Description	1
Main and nose undercarriage damage	2
Wear limits... ..	3

LIST OF ILLUSTRATIONS

	Fig.
Main undercarriage, all Marks	5/1
Nose undercarriage, Mk.1 and 4	5/2
Nose undercarriage, Mk.2 and 3	5/3
Main-undercarriage doors, all Marks	5/4
Repairs to undercarriage doors	5/5

Description

1. The alighting gear is of the retractable tricycle type and comprises two main landing wheels attached to the wing structure and one wheel fitted at the nose of the fuselage. The shock absorption is effected by the use of hydraulically controlled compression legs. The general design of the alighting gear is

the same in all Marks of the aircraft but there are some variations in detail design which cause the use of different parts in the various Marks.

Main and nose undercarriage damage

2. No damage which affects these structures

can be defined as negligible and in the event of damage the affected members must be renewed.

Wear limits

3. Wear limits of the male and female parts of the alighting gear will be introduced in this chapter at a later date.

RESTRICTED

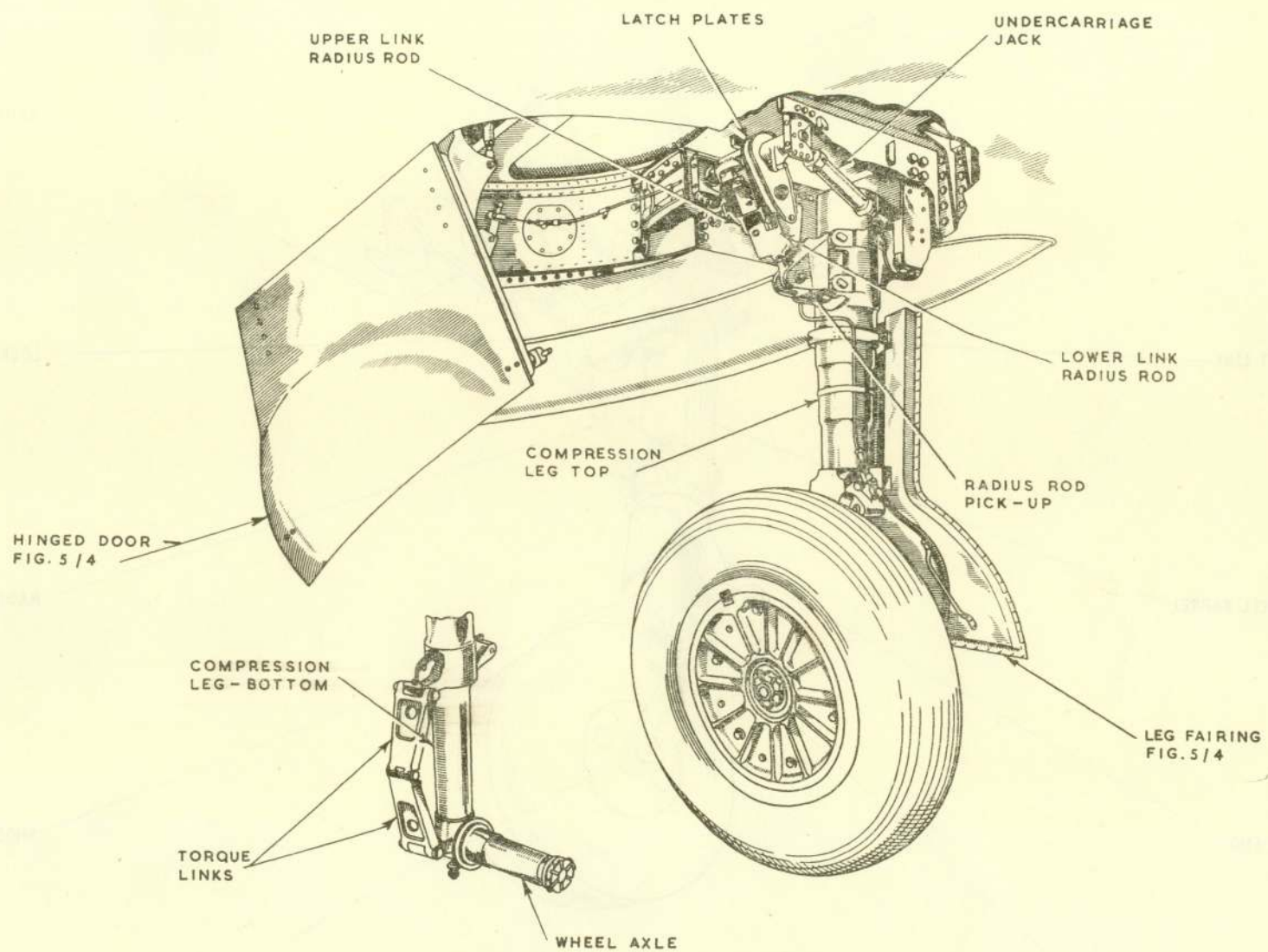


Fig. 5/1. Main undercarriage, all Marks

RESTRICTED

JACK PICK-UP

LOCK PLATE

JACK

RADIUS ROD FORK

SUPPORT LINK

LOCK LINK

NOSEWHEEL BARREL

RADIUS ROD LINK

SWITCH LUG

SHOCK ABSORBER UNIT

NOSEWHEEL FORK

AXLE TUBE

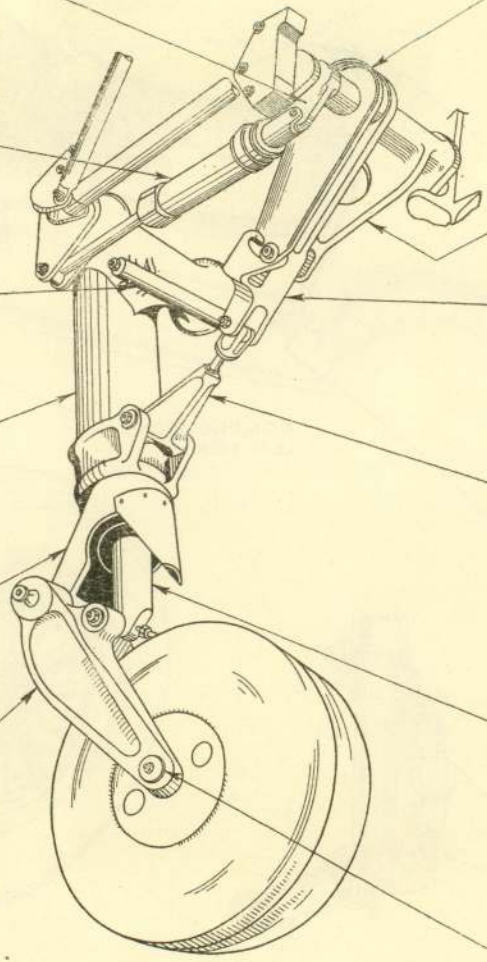


Fig. 5/2. Nose undercarriage, Mk.1 and 4

RESTRICTED

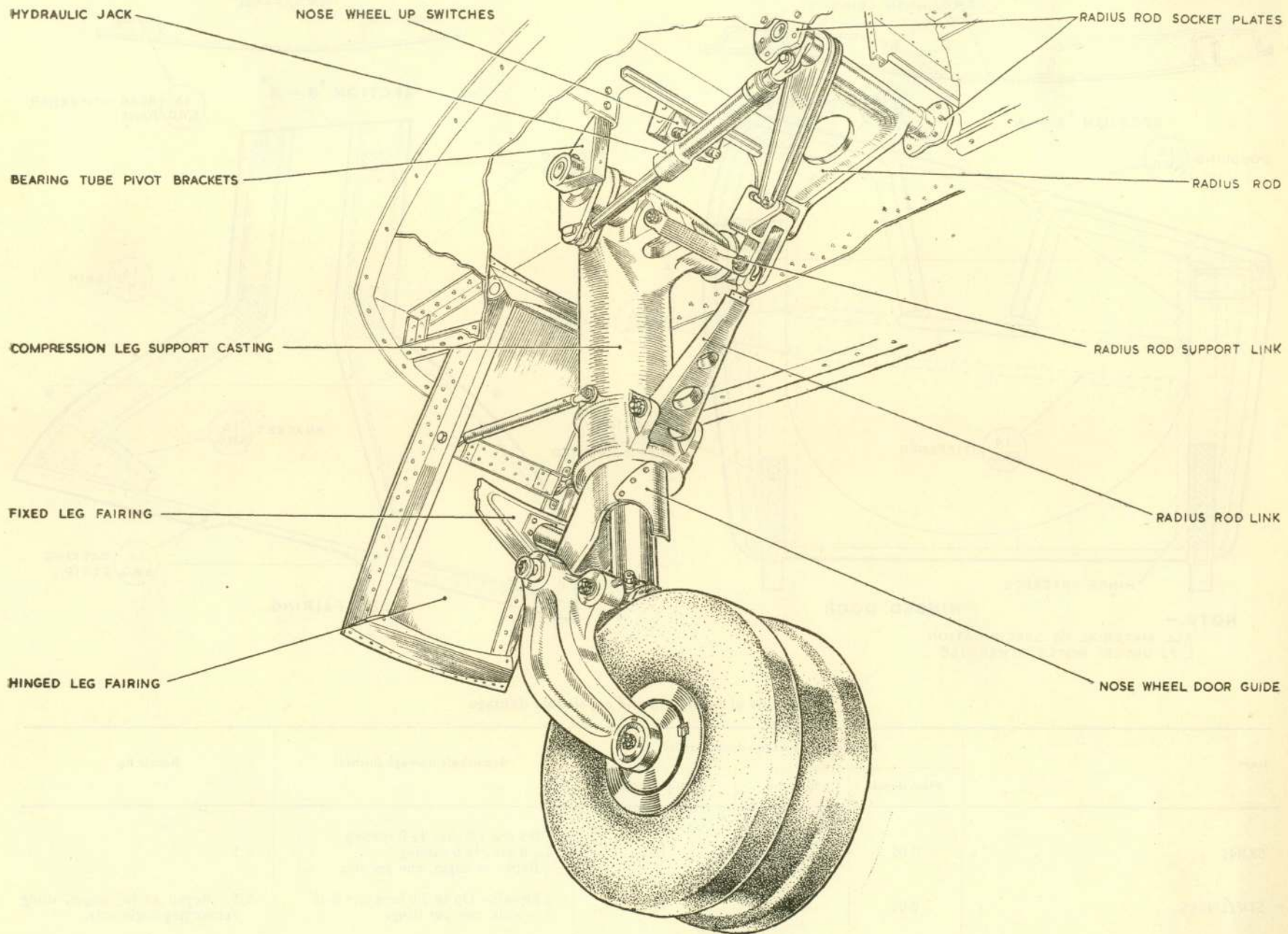
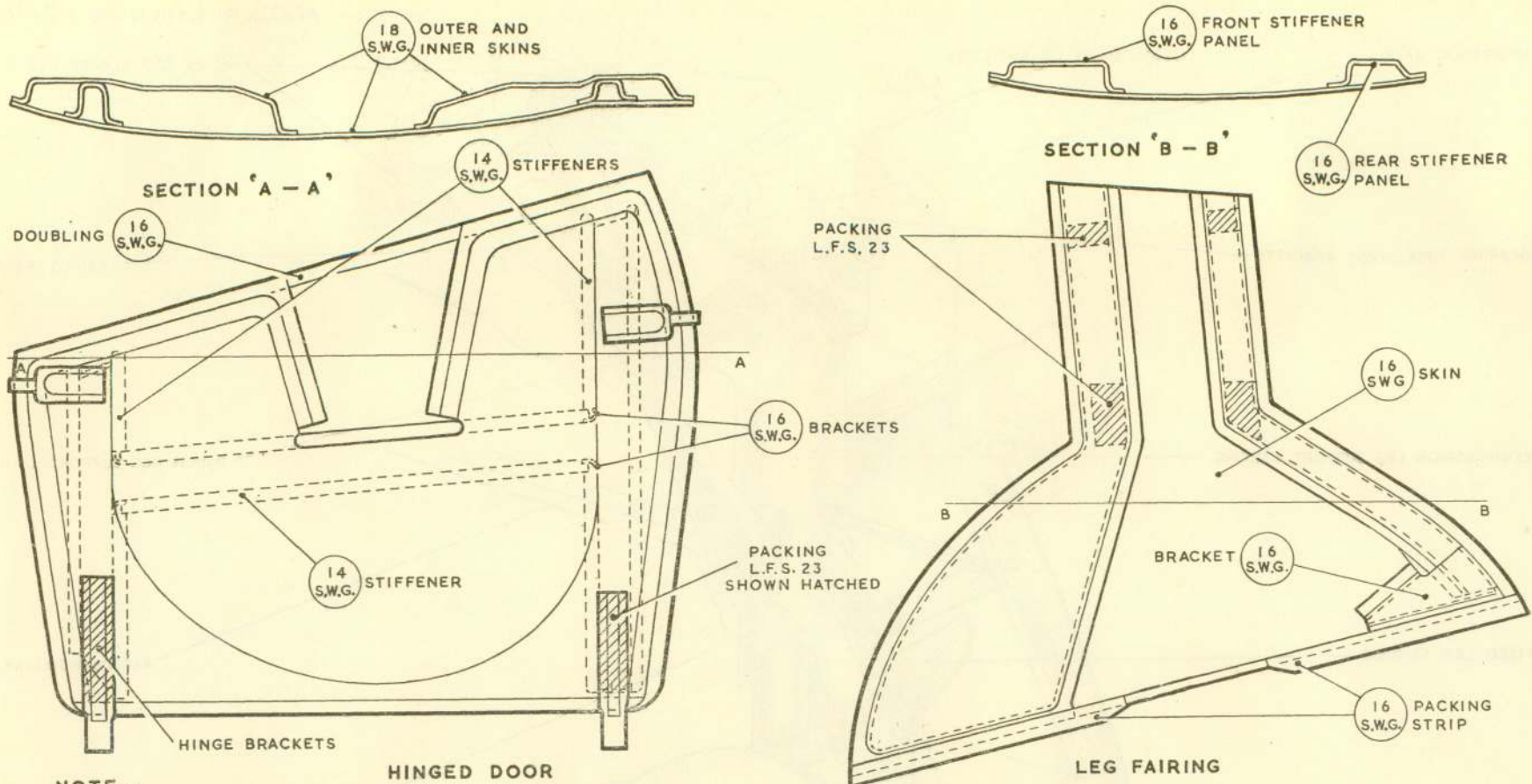


Fig. 5/3. Nose undercarriage, Mk.2 and 3

RESTRICTED



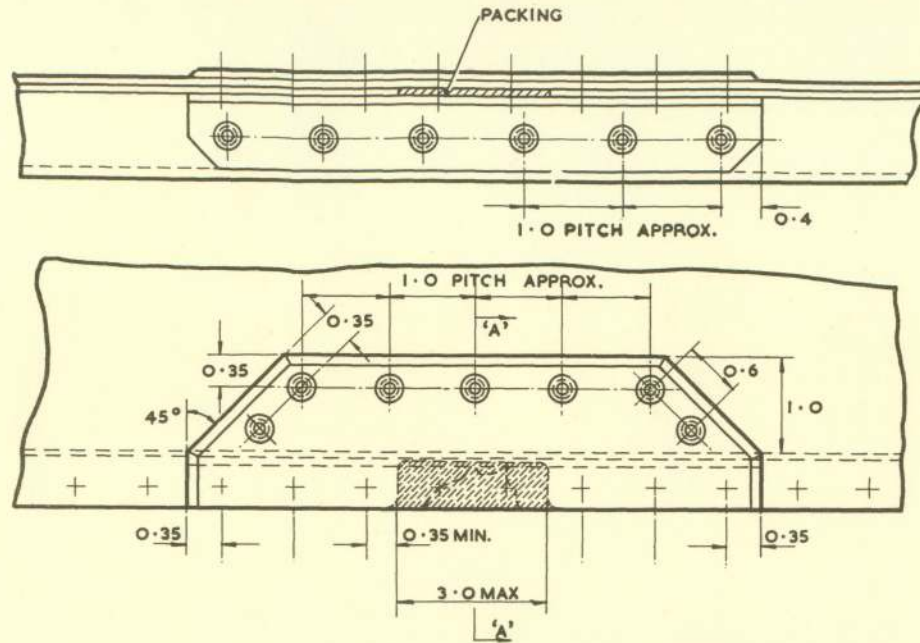
NOTE.—
ALL MATERIAL TO SPECIFICATION
L.73 UNLESS NOTED OTHERWISE

Definitions of negligible and repairable damage

Item	Negligible damage—dents (inches)			Repairable damage (inches)	Repair fig.
	Max. depth	Min. dia.	Min. spacing		
SKINS	0.05	1.0	12.0	{ 0.5 and 1.0 dia., 12.0 spacing 2.0 dia., 18.0 spacing Repair at edges, one per side }	5/5
STIFFENERS	0.05	0.75	12.0	{ Flanges—Up to 3.0 long and 0.45 wide, one per flange }	5/5. Repair as for edges, using reinforcing angle only

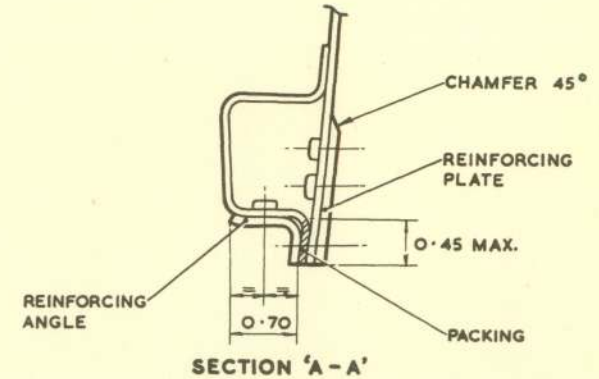
Fig. 5/4. Main-undercarriage doors, all Marks

RESTRICTED

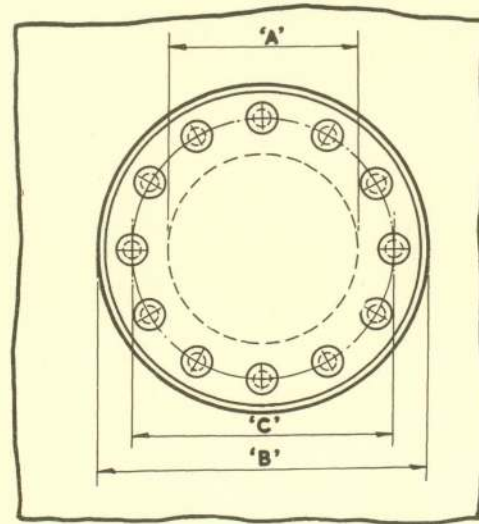


TYPICAL REPAIR AT EDGES

REINFORCING PLATE AND ANGLE TO BE OF SAME THICKNESS AND MATERIAL AS THE DAMAGED PART. RIVETS IN THE FLANGE MARKED THUS + UTILIZE EXISTING RIVET HOLES; AT LEAST THREE RIVETS MUST BE USED EITHER SIDE OF THE CUT-OUT. USE 5/32 DIA. RIVETS TO AS.2229 IN THE FLANGE AND 5/32 DIA. STEEL PINNED CHOBERT RIVETS IN INACCESSIBLE AREAS.



ALL DIMENSIONS ARE IN INCHES



DIA. OF DAMAGE 'A'	DIA. OF PATCH 'B'	P.C.DIA. 'C'	Nº OF RIVETS IN PATCH
0.5	1.9	1.2	6
1.0	2.4	1.7	8
2.0	3.4	2.7	12

PATCHES TO BE OF SAME THICKNESS AND MATERIAL AS THE DAMAGED PART. EDGES TO CHAMFERED 45° WHEN APPLIED TO OUTER SURFACES. USE 5/32 DIA. 120° C'SK. HEAD RIVETS TO A.S.2230 WHERE ACCESSIBLE OR 5/32 DIA. STEEL PINNED CHOBERT RIVETS WHERE INACCESSIBLE EQUALLY SPACED AROUND THE P.C. DIA.

REPAIR TO SKINS

Fig. 5/5. Repairs to undercarriage doors

This file was downloaded
from the RTFM Library.

Link: www.scottbouch.com/rtfm

Please see site for usage terms,
and more aircraft documents.

