

Chapter 12

SWITCH, MAGNETIC, TYPE 1A, No. 1 (ROTAX D8601 and D8601/1)

LIST OF CONTENTS

Introduction...	Para. 1
Description ...	2

LIST OF ILLUSTRATIONS

Type 1A, No. 1 switch, with cover removed ...	Fig. 1
Diagram of internal connections ...	2

LEADING PARTICULARS

Switch, magnetic, Type 1A, No. 1 ...	Stores Ref. 5CW/4375
Normal operating voltage (coil) ...	28V, d.c.
Maximum operating voltage (coil) ...	29V, d.c.
Minimum closing voltage (20 deg. C) ...	12-16V, d.c.
Closing coil resistance (20 deg. C) ...	2.6 ohm \pm 7 per cent
Hold-in coil resistance (20 deg. C) ...	65 ohm \pm 10 per cent
Maximum main contact current ...	200 amp.
Millivolt drop across contacts (at 200 amp.) ...	25 millivolt
Weight ...	8 lb. 12 oz.
Fixing centres ...	6.156 in. by 4.187 in.

Introduction

1. This switch (*fig. 1*), in common with others in the D8600 series, has been designed to function as a single pole contactor in aircraft 112-volt circuit in aircraft.

DESCRIPTION

2. The Type 1A, No. 1 switch is generally similar to the basic D8600 switch (*A.P.4343, Vol. 1, Sect. 11, Chap. 8*), although the D8601/1 differs slightly from the D8601.

3. The Type D8601/1 has a modified adjustment link to ensure positive latching of the economy switch under all conditions. In addition, an improved type of bush has been incorporated between the switch operating arm and adjustment link to facilitate alignment between the two parts.

4. Details of operation, installation and servicing are given in the chapter referred to in para. 2. A diagram of internal connections is shown in *fig. 2*.

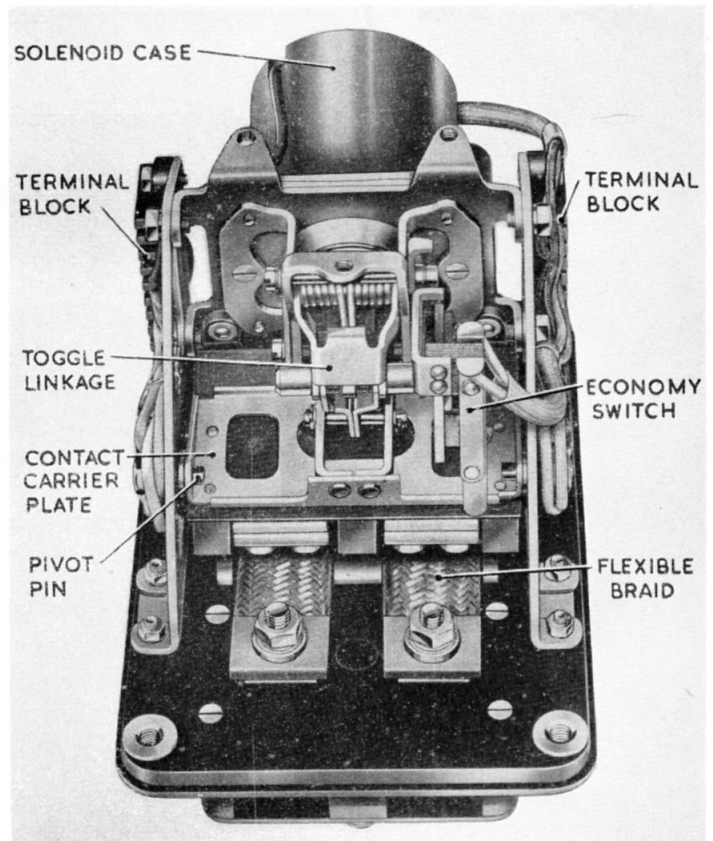


Fig. 1. Type 1A, No. 1 switch, with cover removed

(A.L.10, Mar. 55)

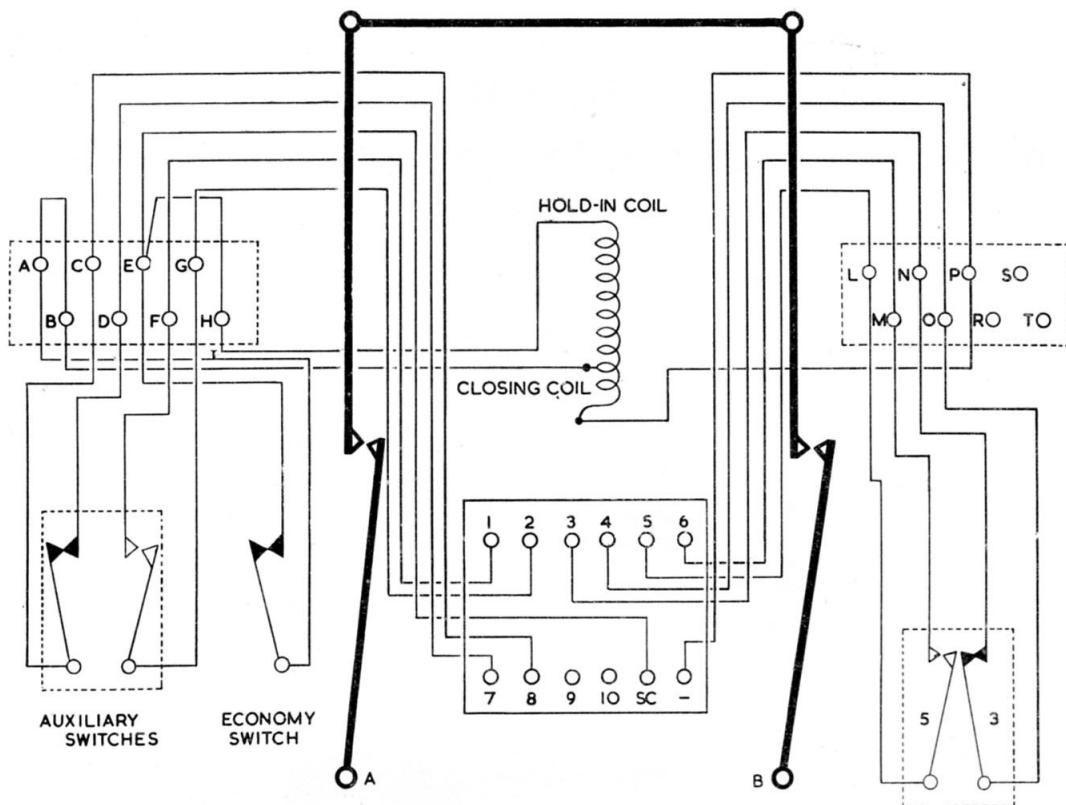


Fig. 2. Diagram of internal connections

RESTRICTED