

Chapter 5

SWITCH, MAGNETIC, TYPE 13A, No. 1 (ROTAX D6103)

LIST OF CONTENTS

	Para.		Para.
Introduction	1	Servicing	3
Description	2		

LIST OF ILLUSTRATIONS

	Fig.		Fig.
Type 13A, magnetic switch	1	Wiring diagram	2

LEADING PARTICULARS

Switch, magnetic, Type 13A, No. 1	Stores Ref. 5CW/4318
Operating voltage	16 to 29 volt. d.c.
Contact rating	50 amp. continuous
Minimum hold-on current	1.5 amp.
Coil rating	90 seconds
Electrical connections	
Contacts	Two $\frac{1}{4}$ in. B.S.F. terminals
Coil	Two 2 B.A. terminals
Mounting	Two holes 0.234 in. dia. spaced 3 in. at centres
Weight	3 lb.

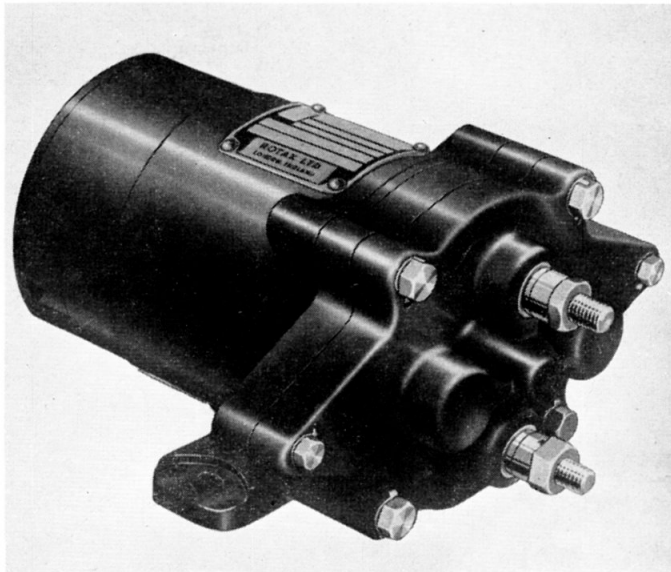


Fig. 1. Type 13A magnetic switch

Introduction

1. The Type 13A, No. 1 switch is a single pole relay intended for intermittent use on circuits carrying up to 120 volt. d.c. The operating coil supply must be 16 to 29 volt d.c. If the switch is used on 112 volt. systems, it must be insulated from the air-frame.

DESCRIPTION

2. This unit is constructed as described for the D 6100 series (*A.P.4343, Vol. 1, Sect. 11, Chap. 5*) and consists of the basic relay with arcing contacts and no economy coil.

SERVICING

3. Servicing for this unit is the same as described for the D 6100 series. The values in the operational check are given below.

- (i) The minimum current necessary to close the switch must be between 2.1 and 3.5 amperes. The product of minimum closing current and coil resistance must not exceed 16 volt.

- (ii) The switch must hold on until the current is reduced to between 1.5 and 0.3 ampere.

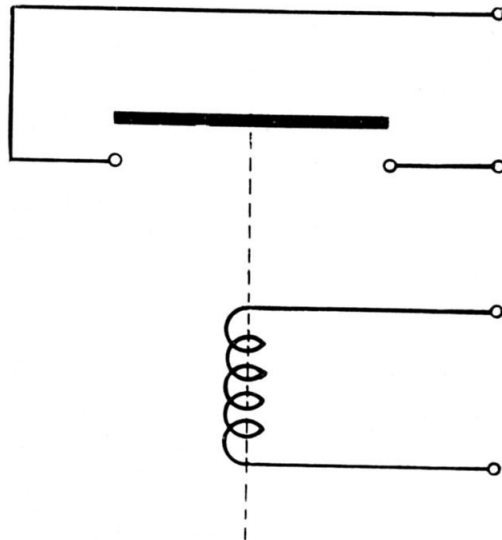


Fig. 2. Wiring diagram

This file was downloaded
from the RTFM Library.

Link: www.scottbouch.com/rtfm

Please see site for usage terms,
and more aircraft documents.

