

## Chapter I

### SWITCH, STARTING, TYPE 1A, No. 5 (ROTAX U2005)

#### LIST OF CONTENTS

|                     | Para. |                    | Para. |
|---------------------|-------|--------------------|-------|
| Introduction ... .. | 1     | Description ... .. | 2     |

#### LIST OF ILLUSTRATIONS

|                                     | Fig. |                        | Fig. |
|-------------------------------------|------|------------------------|------|
| Starting switch, Rotax U2005 ... .. | 1    | Circuit diagram ... .. | 2    |

#### LEADING PARTICULARS

|   |   |
|---|---|
| Stores Ref. ... ..                            | 5CW/5016  |
| Working voltage ... ..                        | 16 to 28 volts d.c.   |
| Mean current through starting resistor ... .. | 200 amp.  |
| Relay operating voltage ... ..                | 18 volts d.c.   |
| Starting resistor (hot) ... ..                | 0.065 ohm.  |
| Relay and ballast resistor ... ..             | 25.6 ohm.   |
| Rating ... ..                                 | Continuous  |
| Electrical connections                        |   |
| Main contacts ... ..                          | Two $\frac{1}{4}$ in. B.S.F. terminals  |
| Coil ... ..                                   | Two 2-B.A. terminals  |
| Mounting ... ..                               | Four holes 0.203 in. dia.<br>spaced on rectangle 4.000 in. $\times$ 4.625 in. between centres |
| Weight ... ..                                 | 4 lb. 3 oz.   |

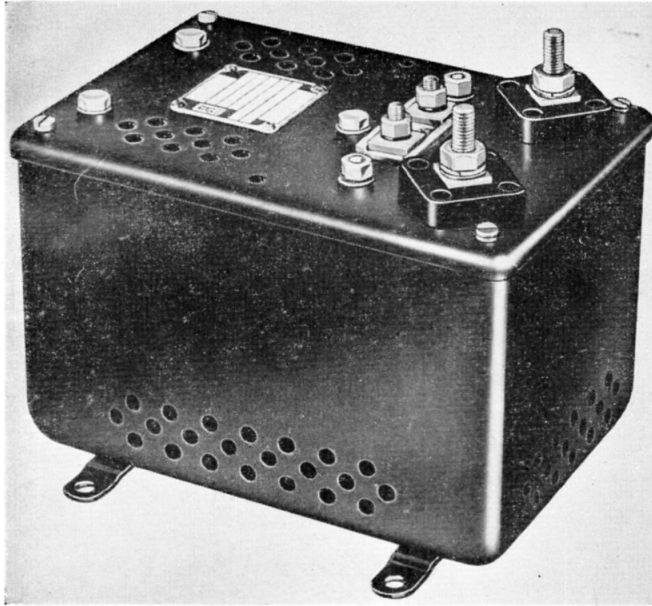


Fig. 1. Starting switch, Rotax U2005

#### Introduction

1. The U2005 28 volt d.c. starter panel is one of the U2000 series of units, which has been designed for starting inverters, Rotax Type S.3101.

#### DESCRIPTION

2. The U2005 starting switch does not differ materially from the basic type except that it is used for 28-volt d.c. circuits instead of 112-volt d.c. Reference should be made to A.P.4343, Vol. 1, Sect. 11, Chap. 9, for details of construction, operation, installation and servicing.

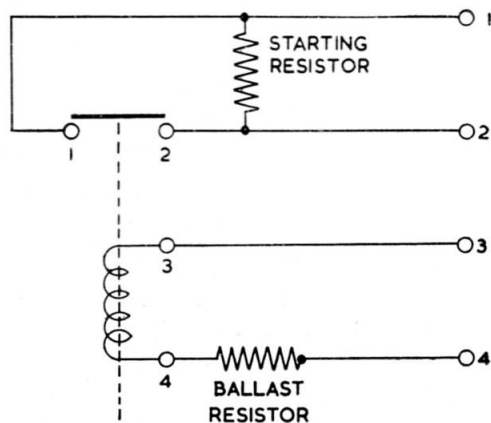


Fig. 2. Circuit diagram

**RESTRICTED**