

Chapter 4

SWITCH STARTING, TYPE 1A, No. 4 (ROTAX U2004)

LIST OF CONTENTS

	Para.		Para.
Introduction	I	Description	2

LIST OF ILLUSTRATIONS

	Fig.		Fig.
Starting switch, Type 1A, No. 4, type U.2004 ...	I	Circuit diagram	2

LEADING PARTICULARS

Switch starting, Type 1A, No. 4	...	Stores Ref. 5C/5792
Working voltage	...	108 to 116 volts d.c.
Main current through starting resistor	...	60 amp.
Relay operating voltage	...	75 volts d.c.
Starting resistor (hot)	...	1.016 ohm.
Relay coil and ballast resistor	...	510 ohm.
Rating	...	Continuous
Electrical connections		
Main contacts	...	Two $\frac{1}{4}$ in. B.S.F. terminals
Coil	...	Two 2-B.A. terminals
Mounting...	...	Four holes 0.203 in. dia. spaced on rectangle 4.000 in. \times 4.625 in. between centres
Weight	...	4 lb. 3 oz.

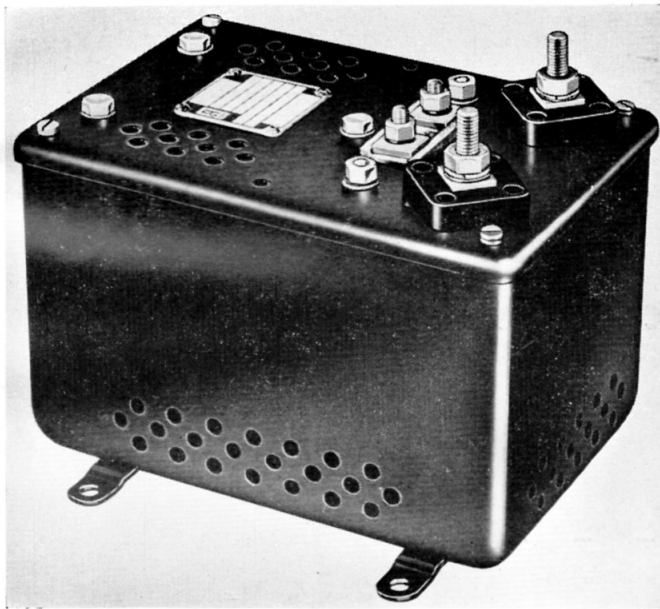


Fig. 1. Starting switch, Type 1A, No. 4

Introduction

1. The Type 1A, No. 4 112-volt d.c. starting switch is one of the U2000 series of units, which has been designed for starting inverters Rotax Type S.3102.

DESCRIPTION

2. The U2044 starting switch does not differ materially from the basic type and reference should be made to A.P.4343, Vol. 1 Sect. 11, Chap. 9, for details of construction, operation, installation and servicing.

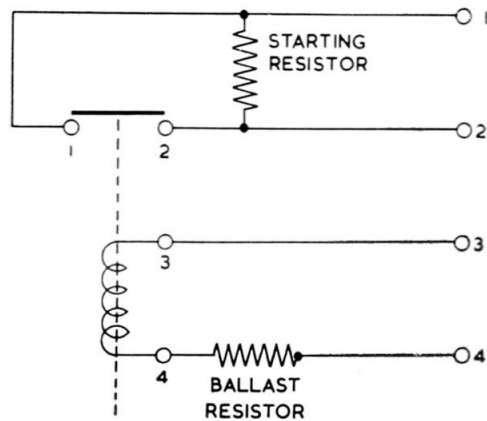


Fig. 2. Circuit diagram

RESTRICTED