

Chapter 2

CONTROLS AND EQUIPMENT AT CREW STATIONS

LIST OF CONTENTS

	<i>Para.</i>		<i>Para.</i>		<i>Para.</i>
<i>Equipment layout</i>	1	<i>Fitting the seat</i>	5	<i>Fitting the seat</i>	8
<i>Accommodation</i>	2	<i>Removing the seat</i>	6	<i>Removing the seat</i>	9
<i>Crew stations</i>	3	◀ <i>Crew chief's seat, B PR Mk. 1 and</i>		<i>Bomb-aimer's station</i>	10
<i>Crew chief's seat, B Mk. 1 and B/K</i>		<i>B K PR Mk. 1 aircraft</i>	7	<i>Ration heaters</i>	11
<i>Mk. 1 aircraft</i> ▶	4			<i>Emergency exits</i>	12

LIST OF ILLUSTRATIONS

	<i>Fig.</i>		<i>Fig.</i>		<i>Fig.</i>
<i>Crew stations</i>	1	<i>Bomb-aimer's station—bomber role</i>	7	<i>Crew chief's seat, B Mk. 1 and B/K</i>	
<i>2nd navigator's station</i>	2	<i>Bomb-aimer's station—P.R. role</i>	8	<i>Mk. 1 aircraft</i>	10
<i>1st navigator's station</i>	3	<i>Crew seat</i>	9	<i>Crew chief's seat, B PR Mk. 1 and</i>	
<i>W/T operator's station</i>	4	<i>Seat-locking mechanisms, Mod. 2878,</i>		<i>B K PR Mk. 1 aircraft</i>	10A
<i>Crew stations alternative fittings</i>	5	<i>2879</i>	9A	<i>Sextant station folding stool</i>	11
<i>Bomb-aimer's control panels</i>	6	<i>Crew seat, universal swivel type (Mod. 3193)</i>	9B	<i>Periscope stowage</i>	12

Equipment layout

1. The layout of the equipment at the crew stations is illustrated in fig. 1 to 8, fig. 1 showing the normal lay-out in the conventional role and fig. 5 indicating alternative equipment which may be called for under various modifications.

Accommodation

2. The three crew members are accommodated in the rear cabin in rearward-facing seats fitted in line across the fuselage, and mounted on rails permitting seat movement fore and aft for ease of entry and exit. Post-Mod. 2878, the port (Air Electronic Officers') seat can be locked in the aft position (fig. 9A) for crew escape, the release

lock plunger engaging a hole in the rear end of the rubbing strip. Post-Mod. 2879, an override control on the centre (1st Navigator's) seat permits operation of the seat-locking mechanism by a crew member other than the occupant; a separate arrangement provides for the seat to be locked in the aft position. Mod. 2879 also introduces a transverse handle for operation of the starboard (Nav./Radar Operator's) seat-locking mechanism. Provision is also made to accommodate a crew chief or passenger as necessary, a seat for this purpose (fig. 10) being secured to the cabin floor between the first and second navigator's seat rails. A folding stool (fig. 11) is provided for the purpose of manning the sextant station. When in use it is mounted on the navigator's table and located by four pins in the stool

legs engaging holes suitably disposed on the table. When not required, it is folded and stowed (fig. 12). A sanitary tube for the use of crew members is located on the rear edge of the pilot's floor.

2A. Post-Mod. 3193 the three crew member seats (fig. 9B) are universal swivel seats, Handley Page Type S1-001, mounted on an adapter assembly, S1-002. The seats are identical above the base rotation platform but the installation is such that the A.E.C's seat has a 168 deg. movement in a counter-clockwise direction, whilst the 1st Navigator's has a 180 deg. and the 2nd Navigator's a 180 deg. or 120 deg. movement in a clockwise direction. Each seat is fitted with an emergency pneumatic bag, supply bottle and emergency pneumatic release lever.

RESTRICTED

Note . . .

When a swivel seat is not in use or is stored, the seat back should remain in the down position so as to reduce fatigue on the return spring and prevent accidental release of the seat back.

Crew stations

3. There are four crew stations, three in the rear cabin and a bomb aimer's prone position under the pilot's floor. The first navigator occupies the centre station, with his second navigator on the starboard and the Air Electronics Officer on the port side of the aircraft. The second navigator also acts as a bomb aimer, and operates the camera controls and refuelling controls according to the role of the aircraft. Control panels for the various roles are mounted on the wall structure by the side of the second navigator (*fig. 2*). The second navigator will also occupy the bomb aimer's prone position for the visual bombing or photography, according to role.

◀ **Crew chief's seat, B Mk. 1 and B/K Mk. 1 aircraft (*fig. 10*)** ▶

4. The crew chief's seat, which can be fitted as additional seating, is bolted to the rear cabin floor and the back rest secured to the N.B.C. crate. Each seat is fitted to an individual aircraft, and is not interchangeable. Care should be taken that not only is the seat labelled and stored when not in use, but also that its fittings and attachments are carefully retained in a receptacle and attached to the seat during periods of non-use. The seat consists of the following items:—

1. The seat structure, including the head-rest, back cushion and seat cushion.
2. Lay strap, Type Z 6F/244
3. Shackle 28Y/2900
4. Shackle pin 28P/864 (2 off)
5. Washer 28W/9419405 (2 off)
6. Split pin 28P/9429619 (2 off)
7. Packing block 9 in × 3.5 in. × 0.75 in. spruce
8. Bolt 28D/1008145 (3 off)
9. Washer 28W/9418921 (3 off)

10. Nut 28M/10299 (3 off)
11. Packing strip 12 in. × 1.5 in. × 16 s.w.g. aluminium
12. Bolt 28D/7002428 (4 off)
13. Washer 28W/9419402 (4 off)
14. Nut 28M/9436836 (4 off)

Fitting the seat (fig. 10)

5. To fit the seat in the aircraft proceed as follows:—

(1) Remove the four bolts from the cabin floor between the first and second navigator's seat rails at Stn. 191.85.

(2) Position the seat between the rails, with the back resting on the N.B.C. crate.

(3) Fit the packing strip between the seat base angle and the cabin floor, pass the four bolts previously removed, through the assembly and secure to the cabin floor.

(4) Position the spruce packing block (7) so that the rivet heads coincide with the gouged indentations in the block, and secure the assembly by passing the bolts through these at attachment angle, the packing block and the N.B.C. unit crate.

(5) Assemble the lap strap by means of shackles secured to the eyebolts in the forward ends of the seat rails at Stn. 191.85.

Removing the seat

6. The removal of the seat is a reversal of the operations in para. 5 above. Care should be taken to retain the loose fittings with the seat.

◀ **Crew chief's seat, B/PR Mk. 1 and B/K/PR Mk. 1 aircraft (*fig. 10A*)**

7. The crew chief's seat (Mod. 3155), fitted as additional seating in aircraft carrying A.R.I.5910, is bolted to the rear cabin floor, the back rest being secured to the pilot's floor beam. Each seat is fitted to an individual aircraft and is not interchangeable.

able. Care should be taken that the seat is labelled and stored when not in use and that its fittings and attachments are carefully retained in a receptacle attached to the seat during periods of non-use. The seat consists of the following items:—

1. The seat structure, including the packing blocks, head rest, back and seat cushions.
2. Lap strap, Type Z 6F/244
3. Wire rope assembly 71041 Sht. 9 (2 off)
4. Shackle 28Y/2900 (2 off)
5. Shackle pin 28Y/864 (4 off)
6. Washer, 2 B.A. 28W/9419402 (4 off)
7. Split pin, $\frac{1}{16}$ in. dia. 28P/9429619 (4 off)
8. Bolt, 2 B.A. 28D/9140649 (2 off)
9. Bolt, 2 B.A. 28D/1011023 (5 off)
10. Bolt, 2 B.A. 28D/8320 (6 off)
11. Screw cup VGS.758/3 (6 off)
12. Stiffnut, 2 B.A. 28M/10288 (15 off)
13. Washer, 2 B.A. 28M/9419402 (15 off)
14. Eyebolt, $\frac{1}{4}$ in. B.S.F. 71041-1 (2 off)
15. Stiffnut, $\frac{1}{4}$ in. B.S.F. 28M/10290 (2 off)
16. Washer, $\frac{1}{4}$ in. B.S.F. 28W/9418921 (2 off)

Fitting the seat (fig. 10A)

8. To fit the seat in the aircraft, use previously removed parts and proceed as follows:—

(1) Secure packing block to rear cabin floor with csk/hd. bolts, screw cups, washers and stiffnuts. Insert two eyebolts through the block and the floor, and secure them with washers and stiffnuts.

(2) Install the seat back structure by inserting attachment bolts through the packing block, floor and attachment brackets, and secure the bolts with washers and stiffnuts.

Note . . .

Insert the two middle bolts from below. ▶

RESTRICTED

- ◀ (3) Insert the upper attachment bolts through the pilot's floor beam, packing block and seat-back attachment bracket and secure them with washers and stiff-nuts.
- (4) Secure the wire rope assemblies to the eyebolts, and attach the lap straps to these assemblies with the shackle pins, washers and split pins.

Removing the seat

9. The seat removal sequence is the reverse of that given in para. 8. Care should be taken to remove the loose fittings with the seat.▶

Bomb-aimer's station

10. The bomb-aimer's prone position is under the pilot's platform and floor, access being gained through a hinged hatch at the forward end of the rear cabin flooring. The position is used for visual bombing and photography, according to role. For bombing (*fig. 7*) a sight is mounted across the window, and a small panel with the necessary controls and switches is mounted on the structure at the starboard side in a convenient operating position. In the photographic role (*fig. 8*) the bomb sight is replaced by a camera sight, and suitable panels for day or night role are mounted on the structure immediately above the bomb-

aimer's window. In either role provision is made for intercommunication, and for de-icing and de-misting of the bomb-aimer's window (Sect. 3, Chap. 8), whilst in the P.R. role, heating is provided for this station.

Ration heaters

11. Food containers are stowed in five ration heaters fitted in the crew cabin, heating being controlled by independent switches mounted on a panel at the rear of the starboard console.

Emergency exits

12. The method of exit in an emergency is dealt with in Chapter 3 of this section.

RESTRICTED

KEY TO FIG. 1 (CREW STATIONS)

- | | | |
|---|---|---|
| 1 ANGLE-POISE LAMP | 33 TUBULAR FLOOD LAMP | 67 DIMMER SWITCH FOR PORT TUBULAR FLOOD LAMP |
| 2 DIMMER SWITCH FOR CENTRE TUBULAR FLOOD LAMP | 34 A.R.I.5851 INDICATOR | 68 CHANGE-OVER SWITCH
<i>UP—I/C, DOWN—WT/RT</i> |
| 3 H.2.S. CONTROL UNIT TYPE 585 | 35 INSTRUMENT INVERTER WARNING LAMP | 69 H.F. POWER SWITCH
<i>UP—FULL POWER, DOWN—$\frac{1}{4}$th POWER</i> |
| 4 HIGH LEVEL RADIO ALTIMETER OSCILLATOR TUNING SWITCH | 36 CABIN ALTIMETER | 70 DIMMER SWITCH FOR THE CENTRE ANGLE-POISE LAMPS |
| 5 H.2.S. INDICATOR | 37 I.L.S. RECEIVER | 71 H.F. CONTROL UNIT |
| 5A CONTROL UNIT TYPE X6478 (post-Mod. 2884) | 38 EMERGENCY DEPRESSURIZATION VALVE
(pre-Mod. 2877) see also item 94
(MICROSWITCH post-Mod. 2057) | 72 G.4B COMPASS MASTER INDICATOR |
| 6 H.2.S. INDICATOR CAMERA | 39 A.C. AND D.C. SUPPLIES DISTRIBUTION BOX | 73 AIR MILEAGE INDICATOR SWITCH |
| 7 H.2.S. CONTROL PANEL | 40 RADIO COMPASS VOLTAGE REGULATOR (post-Mod. 1500) | 74 AIR MILEAGE INDICATOR |
| 8 BOMB RELEASE PUSH SWITCH | 41 RADIO COMPASS POWER FACTOR TRANSFORMER
Type 1571 (post-Mod. 1500) | 75 GEE CONTROL UNIT TYPE TYPE 426A |
| 9 OXYGEN DEMAND REGULATOR | 42 TUBULAR FLOOD LAMP (pre-Mod. 2218) | 76 ANGLE-POISE LAMP |
| 10 DIMMER SWITCH FOR STARBOARD ANGLE-POISE LAMP | 43 GENERATOR CONTROL SWITCHES AND FAILURE WARNING LAMPS 1-2-3-4 | 77 GEE INDICATOR TYPE 166A
(pre-Mod. 3165 and 3166, TACAN INDICATOR AND CONTROL UNIT (post-Mod. 3165), TACAN INDICATOR AND CONTROL UNIT AND COLLINS D.F. INDICATOR (post-Mod. 3166)) |
| 11 V.G. RECORDER ON/OFF VALVE | 44 ROTARY TRANSFORMER CONTROL SWITCHES AND FAILURE WARNING LAMPS 1-2-3 | 78 A.M.U. CONTROL PANEL |
| 12 H.2.S. SCANNER AIR PRESSURE GAUGE | 45 H.F. SELECTOR UNIT | 79 PANEL LAMP |
| 13 Space for PANEL LAMP DIMMER SWITCH, HIGH-INTENSITY LIGHTING SWITCH and AIR SPOILER SWITCH (post-Mod. 2612, 2645, 2646, and 2725) (N.B.C. BOMB GEAR ISOLATION SWITCH PANEL fitted post-Mod. 3031) | 46 ELECTRICAL D.C. SUPPLIES CONTROL PANEL 'G' | 80 DIMMER SWITCH FOR PANEL LAMP |
| 14 ANGLE-POISE LAMP | 47 CABIN DOOR SEAL TEST POINT | 81 INTERCOMM. RADIO COMPASS SWITCH |
| 15 PANEL LAMPS | 48 STARBOARD 'WINDOW' LAUNCHING CONTROL PANEL | 82 RADIO COMPASS SUPPLIES SWITCH |
| 16 BOMB-AIMER'S SWITCH PANEL | 49 PORT 'WINDOW' LAUNCHING CONTROL PANEL | 83 RADIO COMPASS RECEIVER CONTROLLER TYPE 1274 |
| 17 PANEL LAMPS DIMMER SWITCH | 50 A.R.I. 5800 JUNCTION BOX | 84 RADIO COMPASS BEARING INDICATOR |
| 18 BOMB-AIMER'S CONTROL PANEL (pre-Mod. 2612, 2645, 2646 and 2725) | 51 H.F. CONTROL AND DRIVE UNIT | 85 OXYGEN DEMAND REGULATOR |
| 19 MOUNTING FOR AIR BURST DELAY SETTING UNIT | 52 A.R.I.5800 CONTROL UNIT TYPE X.4577 | 86 RADIO COMPASS LOOP CONTROLLER TYPE 1342 |
| 20 BOMB DISTRIBUTOR UNIT | 52A DE-ICING RELIEF VALVE WARNING LAMPS
(post-Mod. 3132) | 87 DINGHY RELEASE HANDLE |
| 21 HIGH LEVEL RADIO ALTIMETER INDICATOR | 53 A.R.I.5800 FALSE WARNING SUPPRESSOR | 88 NO PRESSURE WARNING BELL (CABIN PRESSURIZATION SYSTEM) |
| 22 DIMMER SWITCH FOR STARBOARD TUBULAR FLOOD LAMP | 54 OXYGEN DEMAND TYPE REGULATOR | 88A CANOPY EXPLOSIVE BOLTS CIRCUIT MASTER SWITCH
(post-mod. 3182) |
| 23 TUBULAR FLOOD LAMP | 55 OXYGEN CONTENTS GAUGES | 89 CANOPY EXPLOSIVE BOLTS RESISTANCE BOX |
| 24 COMPASS CUT-OUT SWITCH | 56 INTERCOMM. AMPLIFIER | 90 BATTERY STOWAGE FOR CANOPY EMERGENCY FIRING |
| 25 BOMB DISTRIBUTOR TYPE 9 | 57 28v ROTARY TRANSFORMER AMMETER UNIT | 91 ABANDON AIRCRAFT WARNING SIGN
(post-Mod. 2828) |
| 26 N.B.C. NAVIGATION PANEL | 58 INTERCOMM. CONTROL UNIT | 92 FORWARD THROW INDICATOR (post-Mod. 2748) |
| 27 GEE RECEIVER | 59 H.F. POWER CIRCUIT BREAKER | 93 BOMB-AIMER'S OXYGEN INDICATOR (post-Mod. 2828) |
| 28 SEXTANT AND PERISCOPE SUPPLY SOCKET | 60 ANGLE-POISE LAMP | 94 EMERGENCY DEPRESSURIZATION VALVE
(post-Mod. 2877) |
| 29 AIR SPEED INDICATOR | 61 DIMMER SWITCH FOR PORT ANGLE-POISE LAMP | 95 EMERGENCY LIGHTING SWITCHES (post-Mod. 2876) |
| 30 AIR TEMPERATURE INDICATOR | 62 I.F.F. CONTROL UNIT | |
| 31 STOWAGE FOR ALTERNATIVE R.F. UNIT TYPE 24B (post-Mod. 1828) | 63 CLOCK | |
| 32 GROUND POSITION INDICATOR | 64 120v GENERATOR AMMETER UNIT | |
| | 65 H.F. AERIAL CONTROL UNIT | |
| | 66 A.R.I.5800 B SCOPE INDICATOR (post-Mod. 1408) | |

RESTRICTED

marking set 20947514cc

Continued overleaf

KEY TO FIG. 1 (CREW STATIONS)

- | | | |
|---|--|---|
| 1 ANGLE-POISE LAMP | 33 TUBULAR FLOOD LAMP | 67 DIMMER SWITCH FOR PORT TUBULAR FLOOD LAMP |
| 2 DIMMER SWITCH FOR CENTRE TUBULAR FLOOD LAMP | 34 A.R.I.5851 INDICATOR | 68 CHANGE-OVER SWITCH
<i>UP—1/C, DOWN—WT/RT</i> |
| 3 H.2.S. CONTROL UNIT TYPE 585 | 35 INSTRUMENT INVERTER WARNING LAMP | 69 H.F. POWER SWITCH
<i>UP—FULL POWER, DOWN—$\frac{1}{2}$th POWER</i> |
| 4 HIGH LEVEL RADIO ALTIMETER OSCILLATOR TUNING SWITCH | 36 CABIN ALTIMETER | 70 DIMMER SWITCH FOR THE CENTRE ANGLE-POISE LAMPS |
| 5 H.2.S. INDICATOR | 37 I.L.S. RECEIVER | 71 H.F. CONTROL UNIT |
| ◀5A CONTROL UNIT TYPE X6478 (post-Mod. 2884)▶ | 38 EMERGENCY DEPRESSURIZATION VALVE
(pre-Mod. 2877)see also item 94
(MICROSWITCH post-Mod. 2057) | 72 G.4B COMPASS MASTER INDICATOR |
| 6 H.2.S. INDICATOR CAMERA | 39 A.C. AND D.C. SUPPLIES DISTRIBUTION BOX | 73 AIR MILEAGE INDICATOR SWITCH |
| 7 H.2.S. CONTROL PANEL | 40 RADIO COMPASS VOLTAGE REGULATOR (post-Mod. 1500) | 74 AIR MILEAGE INDICATOR |
| 8 BOMB RELEASE PUSH SWITCH | 41 RADIO COMPASS POWER FACTOR TRANSFORMER
Type 1571 (post-Mod. 1500) | 75 GEE CONTROL UNIT TYPE 426A |
| 9 OXYGEN DEMAND REGULATOR | 42 TUBULAR FLOOD LAMP (pre-Mod. 2218) | 76 ANGLE-POISE LAMP |
| 10 DIMMER SWITCH FOR STARBOARD ANGLE-POISE LAMP | 43 GENERATOR CONTROL SWITCHES AND FAILURE WARNING LAMPS 1-2-3-4 | 77 GEE INDICATOR TYPE 166A
(pre-Mod. 3165 and 3166 TACAN INDICATOR AND CONTROL UNIT (post-Mod. 3165), TACAN INDICATOR AND CONTROL UNIT AND COLLINS D.F. INDICATOR (post-Mod. 3166) |
| 11 V.G. RECORDER ON/OFF VALVE | 44 ROTARY TRANSFORMER CONTROL SWITCHES AND FAILURE WARNING LAMPS 1-2-3 | 78 A.M.U. CONTROL PANEL |
| 12 H.2.S. SCANNER AIR PRESSURE GAUGE | 45 H.F. SELECTOR UNIT | 79 PANEL LAMP |
| 13 Space for PANEL LAMP DIMMER SWITCH, HIGH-INTENSITY LIGHTING SWITCH and AIR SPOILER SWITCH (post-Mod. 2612, 2645, 2646, and 2725) (N.B.C. BOMB GEAR ISOLATION SWITCH PANEL fitted post-Mod. 3031) | 46 ELECTRICAL D.C. SUPPLIES CONTROL PANEL 'G' | 80 DIMMER SWITCH FOR PANEL LAMP |
| 14 ANGLE-POISE LAMP | 47 CABIN DOOR SEAL TEST POINT | 81 INTERCOMM. RADIO COMPASS SWITCH |
| 15 PANEL LAMPS | 48 STARBOARD 'WINDOW' LAUNCHING CONTROL PANEL | 82 RADIO COMPASS SUPPLIES SWITCH |
| 16 BOMB-AIMER'S SWITCH PANEL | 49 PORT 'WINDOW' LAUNCHING CONTROL PANEL | 83 RADIO COMPASS RECEIVER CONTROLLER TYPE 1274 |
| 17 PANEL LAMPS DIMMER SWITCH | 50 A.R.I. 5800 JUNCTION BOX | 84 RADIO COMPASS BEARING INDICATOR |
| 18 BOMB-AIMER'S CONTROL PANEL (pre-Mod. 2612, 2645, 2646 and 2725) | 51 H.F. CONTROL AND DRIVE UNIT | 85 OXYGEN DEMAND REGULATOR |
| 19 MOUNTING FOR AIR BURST DELAY SETTING UNIT | 52 A.R.I.5800 CONTROL UNIT TYPE X.4577 | 86 RADIO COMPASS LOOP CONTROLLER TYPE 1342 |
| 20 BOMB DISTRIBUTOR UNIT | ◀52A DE-ICING RELIEF VALVE WARNING LAMPS
(post-Mod. 3132)▶ | 87 DINGHY RELEASE HANDLE |
| 21 HIGH LEVEL RADIO ALTIMETER INDICATOR | 53 A.R.I.5800 FALSE WARNING SUPPRESSOR | 88 NO PRESSURE WARNING BELL (CABIN PRESSURIZATION SYSTEM) |
| 22 DIMMER SWITCH FOR STARBOARD TUBULAR FLOOD LAMP | 54 OXYGEN DEMAND TYPE REGULATOR | ◀88A CANOPY EXPLOSIVE BOLTS CIRCUIT MASTER SWITCH
(post-Mod. 3182)▶ |
| 23 TUBULAR FLOOD LAMP | 55 OXYGEN CONTENTS GAUGES | 89 CANOPY EXPLOSIVE BOLTS RESISTANCE BOX |
| 24 COMPASS CUT-OUT SWITCH | 56 INTERCOMM. AMPLIFIER | 90 BATTERY STOWAGE FOR CANOPY EMERGENCY FIRING |
| 25 BOMB DISTRIBUTOR TYPE 9 | 57 28v ROTARY TRANSFORMER AMMETER UNIT | 91 ABANDON AIRCRAFT WARNING SIGN
(post-Mod. 2828) |
| 26 N.B.C. NAVIGATION PANEL | 58 INTERCOMM. CONTROL UNIT | 92 FORWARD THROW INDICATOR (post-Mod. 2748) |
| 27 GEE RECEIVER | 59 H.F. POWER CIRCUIT BREAKER | 93 BOMB-AIMER'S OXYGEN INDICATOR (post-Mod. 2828) |
| 28 SEXTANT AND PERISCOPE SUPPLY SOCKET | 60 ANGLE-POISE LAMP | 94 EMERGENCY DEPRESSURIZATION VALVE
(post-Mod. 2877) |
| 29 AIR SPEED INDICATOR | 61 DIMMER SWITCH FOR PORT ANGLE-POISE LAMP | 95 EMERGENCY LIGHTING SWITCHES (post-Mod. 2876) |
| 30 AIR TEMPERATURE INDICATOR | 62 I.F.F. CONTROL UNIT | |
| 31 STOWAGE FOR ALTERNATIVE R.F. UNIT TYPE 24B (post-Mod. 1828) | 63 CLOCK | |
| 32 GROUND POSITION INDICATOR | 64 120v GENERATOR AMMETER UNIT | |
| | 65 H.F. AERIAL CONTROL UNIT | |
| | 66 A.R.I.5800 B SCOPE INDICATOR (post-Mod. 1408) | |

RESTRICTED

marking set 20947514cc

KEY TO FIG. 2 (2nd NAVIGATOR'S STATION)

- 1 GUARD
 2 OXYGEN SUPPLY HOSES
 3 SERVICING LAMP
 4 WIND MONITOR INDICATOR
 5 GEE JUNCTION BOX TYPE 255
 6 GEE JUNCTION BOX TYPE 266
 7 H.2.S. CONTROL UNIT TYPE 626
 8 CREW SEAT RAILS
 9 GEE STROBE UNIT
 10 SACHEL STOWAGE
 11 RATION HEATER POSITION
 (post-Mod. 197 and 1161)
 12 INTERCOMM SOCKET
 13 H.2.S. CONTROL UNIT TYPE 6223
 (Post-Mod. 2216)
 14 PENCIL STOWAGE
 15 RATION HEATER (pre-Mod. 197 and 1161)
 16 G.4B COMPASS AMPLIFIER/DEVIATION
 CORRECTOR
 17 FIRE EXTINGUISHER
 18 H.2.S. SCANNER PRESSURIZING ON/OFF
 VALVE
 19 SIGNAL LAMP STOWAGE (pre-Mod. 1213)
 20 SIGNAL LAMP FILTER STOWAGE
 (pre-Mod. 1213)
 21 RELEASE HANDLE FOR STARBOARD ESCAPE
 HATCH
 22 ALTERNATIVE ROLE CONTROL PANEL
 (P.R. Day—P.R. Night—Tanker)
 23 FUSE PANEL 'F'
 24 STARBOARD WINDOW BLIND
 25 AXE
 26 FIRE EXTINGUISHER
 27 P.R. ROLE CONNECTOR PANEL
 28 TANKER ROLE CONNECTOR PANEL
 29 PRESSURE CONTROLLER
 30 COMPRESSION SOLENOID VALVES
 31 SEXTANT STATION RELEASE HANDLE
 32 INCLINOMETER (post-Mod. 72)
 DAY ROLE CAMERA CONTROL PANEL
 33 FUSE LABEL
 34 H.D. CONNECTOR BLOCK
 35 CAMERA MASTER RELAY
 36 SURVEY AND TRI-CAMERA HOLD-OFF CIR-
 CUIT BREAKER
 37 TYPE 35 CONTROLLER CIRCUIT BREAKER
 38 TYPE 80 CONTROLLER CIRCUIT BREAKER
 39 UNISELECTOR SUPPLY CIRCUIT BREAKER
 40 TYPE 35 No. 16 CAMERA CONTROLLER
 41 FUSE BLOCK
 42 TYPE 80 CONTROLLER
 43 PORT MAIN CAMERA WINDOW DOORS OPEN
 INDICATOR
 44 PORT OBLIQUE CAMERA WINDOW DOORS
 OPEN INDICATOR
 45 SURVEY CAMERA WINDOW DOORS OPEN
 INDICATOR
 46 STARBOARD OBLIQUE CAMERA WINDOW
 DOORS OPEN INDICATOR
 47 STARBOARD MAIN CAMERA WINDOW DOORS
 OPEN INDICATOR
 48 CAMERA PULSING INDICATORS No. 1-8 (L-R)
 49 CAMERA SELECTOR SWITCHES No. 1-8 (L-R)
 50 CENTRE TRI-INSTALLATION CAMERA PULS-
 ING INDICATOR
 51 STARBOARD TRI-INSTALLATION CAMERA
 PULSING INDICATOR
 52 CAMERA WINDOW DOORS SELECTED OPEN
 AND POWER ON INDICATOR
 53 CAMERA WINDOW DOOR SWITCH
 54 STARBOARD TRI-INSTALLATION CAMERA
 RATIO SELECTOR SWITCH
 55 CENTRE TRI-INSTALLATION CAMERA RATIO
 SELECTOR SWITCH
 56 PORT TRI-INSTALLATION CAMERA PULSING
 INDICATOR
 57 PORT TRI-INSTALLATION CAMERA RATIO
 SELECTOR SWITCH
 58 SURVEY CAMERA RATIO SELECTOR SWITCH
 (pre-Mod. 2099)
 59 SURVEY CAMERA PULSING INDICATOR
 (pre-Mod. 2099)
 60 RATIO SELECTOR RESET SWITCH
 61 RATIO SELECTOR RESET INDICATOR
 62 SURVEY CAMERA RATIO SELECTOR SWITCH
 (post-Mod. 2099) ...
 63 RATIO UNISELECTOR
 64 SURVEY CAMERA SUPPLY ISOLATING
 SWITCH (post-mod. 2099)
 65 SURVEY CAMERA PULSING INDICATOR
 (post-Mod. 2099)
 NIGHT ROLE, CAMERA CONTROL PANEL
 66 FILM INDICATORS No. 4, 5 and 6 (L-R)
 67 FLASHES REMAINING COUNTER
 68 MASTER CAMERA SELECTOR SWITCH
 69 FLASHES A.L. GONE INDICATOR
 70 FLASH DOORS OPEN INDICATOR
 71 PORT CAMERA WINDOW DOORS OPEN
 INDICATOR
 72 IMAGE MOVEMENT COMPENSATION GROUND
 SPEED SETTING CONTROL
 73 I.M.C. GROUND SPEED INDICATOR
 74 I.M.C. CONTROLLER LAMP
 75 I.M.C. ALTITUDE SETTING CONTROL
 76 FILM CONTENTS INDICATOR PUSH SWITCH
 77 I.M.C. CONTROLLER LIGHTING DIMMER
 SWITCH
 78 STARBOARD CAMERA WINDOW DOORS OPEN
 INDICATOR
 79 DOORS SELECTED OPEN AND POWER ON
 INDICATOR
 80 FLASH PULSING INDICATOR LAMP
 81 CAMERA WINDOW DOORS CONTROL SWITCH
 82 FLASHES PULSED COUNTER
 83 EXPOSURES COUNTER
 84 CAMERA FILM INDICATORS No. 1, 2 and 3
 (L-R)
 85 PANEL LAMPS
 86 I.M.C. CAMERA SETTING SELECTOR
 87 CAMERA SELECTOR SWITCHES No. 1, 2 and 3
 (L-R)
 88 FRAME WIND SWITCH
 89 CAMERA START AND FLASH RELEASE
 SWITCH
 90 FLASH STOP SWITCH
 91 CAMERA STOP SWITCH
 92 CAMERA SELECTOR SWITCHES No. 4, 5 and 6
 (L-R)
 93 MAGAZINE TEST SWITCH
 94 FUSE BOX (FUSES 1-12)
 95 PANEL LIGHTING DIMMER SWITCH
 96 FUSE BOX (FUSES 13-18)
 97 FUSE BOX (FUSES 19-24)
 98 FUSE LABEL
 TANKER ROLE, REFUELLING CONTROL PANEL
 99 MAIN PLANE FLOODLIGHT SWITCH
 100 MAIN PLANE FLOODLIGHT DIMMER SWITCH
 101 BEACON SWITCH
 102 H.D.U. FLOODLIGHT SWITCH
 103 H.D.U. FLOODLIGHT DIMMER SWITCH
 104 FUSES
 105 PANEL LAMPS SWITCH
 106 FUSES
 107 FUSELAGE TRANSFER TANK FUEL CON-
 TENTS GAUGE
 108 CIRCUIT BREAKERS
 (NORMAL (left)—EMERGENCY (right))
 109 PILOT/OPERATOR CHANGE-OVER SWITCH
 110 MASTER SWITCH
 111 FUSELAGE TANK No. 3 CELL STARBOARD,
 CONTENTS GAUGE
 112 STARBOARD UNDERWING TANK CONTENTS
 GAUGE
 113 HOSE TENSION INDICATOR
 114 HOSE LENGTH ON DRUM INDICATOR
 115 EMERGENCY SIGNAL SWITCH
 UP (Auto)—DOWN (stand off)
 116 STANDBY CIRCUIT SELECTOR
 117 HOSE JETTISON SWITCH
 118 MOTOR WARMING SWITCH
 119 HOSE REEL WIND AND TRAIL SWITCH
 120 HOSE REEL BRAKE AND RESET SWITCH
 121 HOSE TENSION CONTROL
 122 FUEL PRESSURE GAUGE
 123 REFUELLING LIGHTING SWITCH
 UP (day)—DOWN (night)
 124 PANEL LAMPS DIMMER SWITCH
 125 CIRCUIT SELECTED INDICATOR
 (trail or stowed)
 126 TOTAL FUEL TRANSFERRED INDICATOR
 127 FUEL VALVE CONTROL SWITCH
 AUTO (up)—SHUT (centre)—OPEN (down)
 128 MAIN FUEL PUMP CONTROL SWITCH
 129 PUMP STOP BUTTON
 130 PUMP START BUTTON
 131 PORT UNDERWING TANK CONTENTS GAUGE
 132 LOW PRESSURE WARNING LAMP
 133 FUSELAGE TANK No. 3 CELL PORT, CON-
 TENTS GAUGE
 134 BOMB BAY TRANSFER TANK CONTENTS
 GAUGE

RESTRICTED

KEY TO FIG. 3 (1st NAVIGATOR'S STATION)

- | | | | |
|----|--|----|---|
| 1 | INVERTER No. 1 ON/OFF SWITCH | 20 | H.2.S. SCANNER ROTATION SWITCH |
| 2 | INVERTER 1600 C/S FAILURE NEONS | 21 | SPECIAL SERVICES PANEL |
| 3 | INVERTER No. 3 ON/OFF SWITCH | 22 | RADIO COMPASS RECEIVER |
| 4 | INVERTER No. 2 ON/OFF SWITCH | 23 | SERVICING LAMP |
| 5 | INVERTERS 400 C/S FAILURE LAMPS | 24 | NAVIGATION LAMP FLASHER UNIT |
| 6 | A.R.I.5800 ON/OFF SWITCH | 25 | INTERCOMM. SOCKET |
| 7 | INVERTER EMERGENCY CHANGE-OVER SWITCH | 26 | H.F. TRANSMITTER |
| 8 | A.R.I.5810—H.2.S.—400 C/S FAILURE NEONS | 27 | GUARD |
| 9 | GEE Mk. 3 ON/OFF SWITCH | 28 | FUEL CONTENTS GAUGE OSCILLATOR UNIT
No. 6 (also JUNCTION BOX on K Type aircraft) |
| 10 | SPECIAL SERVICE (P.F.) ON/OFF SWITCH | 29 | AUTOSTABILIZER AMPLIFIER UNIT |
| 11 | SCANNER STABILIZING SWITCH
ON/OFF—EMERGENCY—STANDBY | 30 | AUTOSTABILIZER SLAVE RELAY UNIT |
| 12 | RADIO ALTIMETER (HIGH LEVEL) ON/OFF SWITCH | 31 | AUTOSTABILIZER P.A. UNIT |
| 13 | SPECIAL SERVICE (M.W.) ON/OFF SWITCH | 32 | GUARD |
| 14 | A.R.I.5810—N.B.C.—400 C/S FAILURE NEONS | 33 | TRAP DOOR |
| 15 | I.F.F. ON/OFF SWITCH | 34 | TIME OF FALL CALCULATOR |
| 16 | A.R.I.5851 EQUIPMENT SWITCH. Depress to start. (Pre-Mod. 2399—EQUIPMENT AND INVERTER SWITCH) | 35 | FUEL CONTENTS GAUGES OSCILLATOR UNITS
No. 1 to 5 |
| 17 | A.R.I. 5851 INVERTER SWITCH (Post-Mod. 2399) | 36 | FORWARD THROW INDICATOR (post-Mod. 2748) |
| 18 | A.R.I.5810—N.B.C.—ON/OFF SWITCH | 37 | BOMB AIMER'S OXYGEN INDICATOR
(post-Mod. 2828) |
| 19 | A.R.I.5810—H.2.S.—ON/OFF SWITCH | | |

RESTRICTED

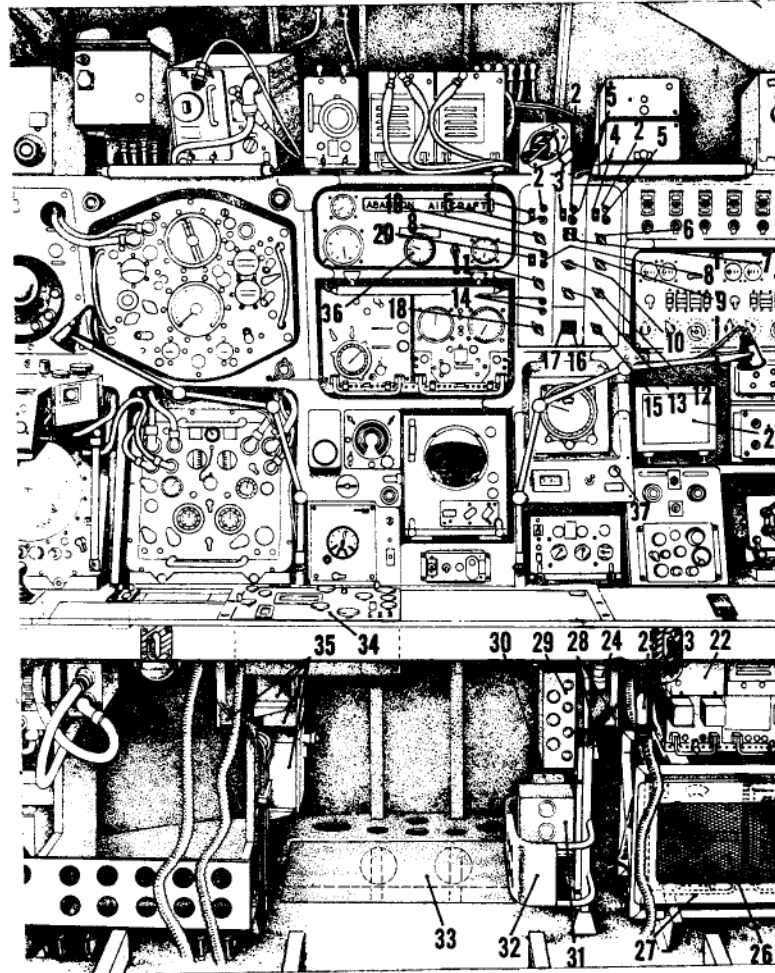


Fig. 3. 1st Navigator's station

RESTRICTED

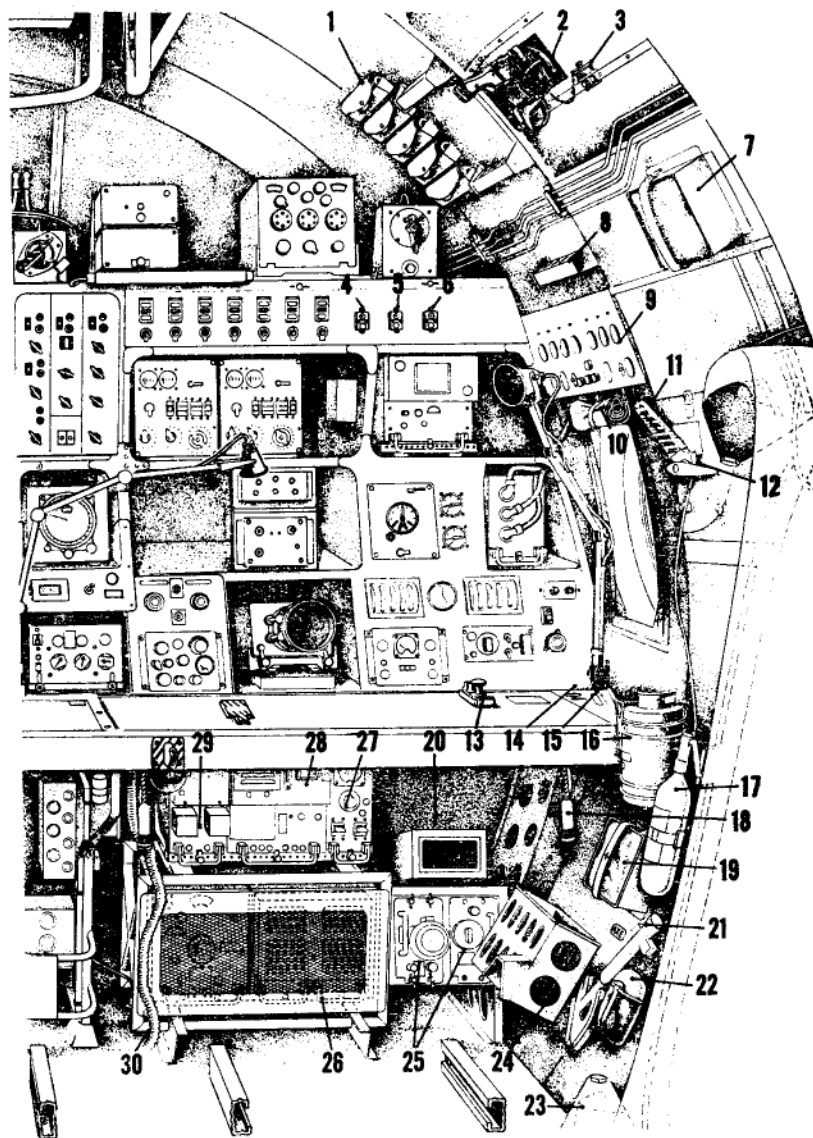


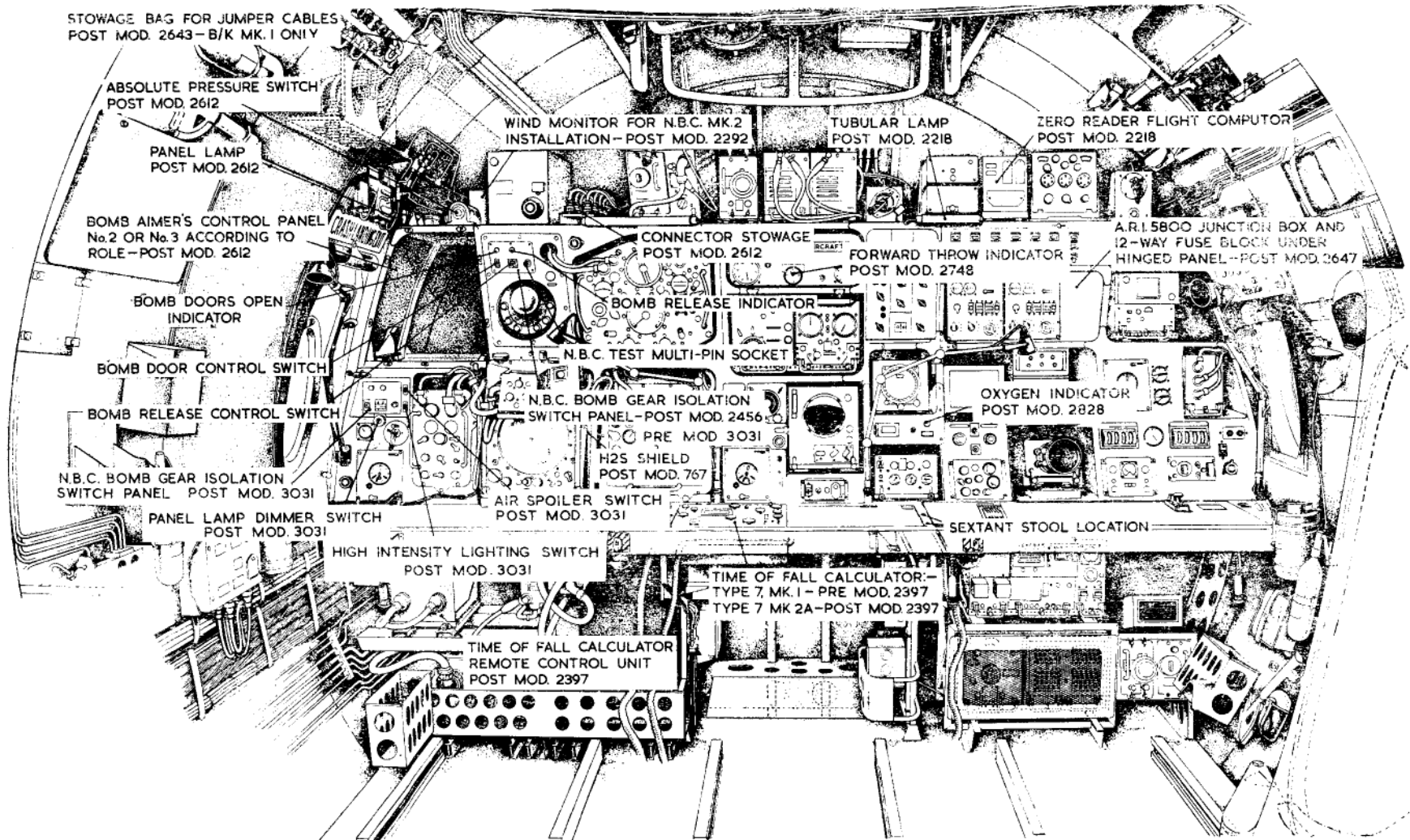
Fig. 4. W/T operator's station

RESTRICTED

marking set 20947514cc

KEY TO FIG. 4 (W/T OPERATOR'S STATION)

- | | |
|---|---|
| 1 LEAK STOPPER STOWAGE | 16 RATION HEATER |
| 2 SIGNAL DISCHARGER | 17 FIRE EXTINGUISHER |
| 3 PLUG FOR SIGNAL DISCHARGER | 18 INTERCOMM. SOCKET |
| 4 H.F. CIRCUIT BREAKER
(pre-Mod. 2362 or 2446) | 19 FIRST-AID KIT |
| 5 I.L.S. CIRCUIT BREAKER
(pre-Mod. 2362 or 2446) | 20 A.R.I. POWER UNIT TYPE X.4576 FOR B. SCOPE
(post-Mod. 1408) |
| 6 N.B.C. CIRCUIT BREAKER
(pre-Mod. 2362 or 2446) | 21 AXE |
| 7 FIRST-AID KIT | 22 ASBESTOS GLOVES |
| 8 SIGNAL CARTRIDGE STOWAGE | 23 DOOR WINDSHIELD |
| 9 ELECTRIC SUPPLIES VOLTAGE TRIMMER PANEL | 24 SATCHEL STOWAGE |
| 10 WINDOW BLIND | 25 ALTERNATIVE R.F. UNITS FOR GEE RECEIVER |
| 11 DOOR JETTISON HANDLE | 26 H.F. MODULATOR |
| 12 DOOR RELEASE HANDLE | 27 H.F. VOLTAGE REGULATOR |
| 13 MORSE KEY | 28 H.F. RECEIVER |
| 14 SIGNAL LAMP SUPPLY SOCKET | 29 RADIO COMPASS RECEIVER |
| 15 PENCIL STOWAGE | 30 OXYGEN SUPPLY HOSE |



NOTE:- MOD. 2612 REFERRED TO MAY BE ALTERNATIVELY MOD. 2645, 2646 OR 2725 ACCORDING TO THE AIRCRAFT TYPE

Fig. 5. Crew stations—alternative fittings

RESTRICTED

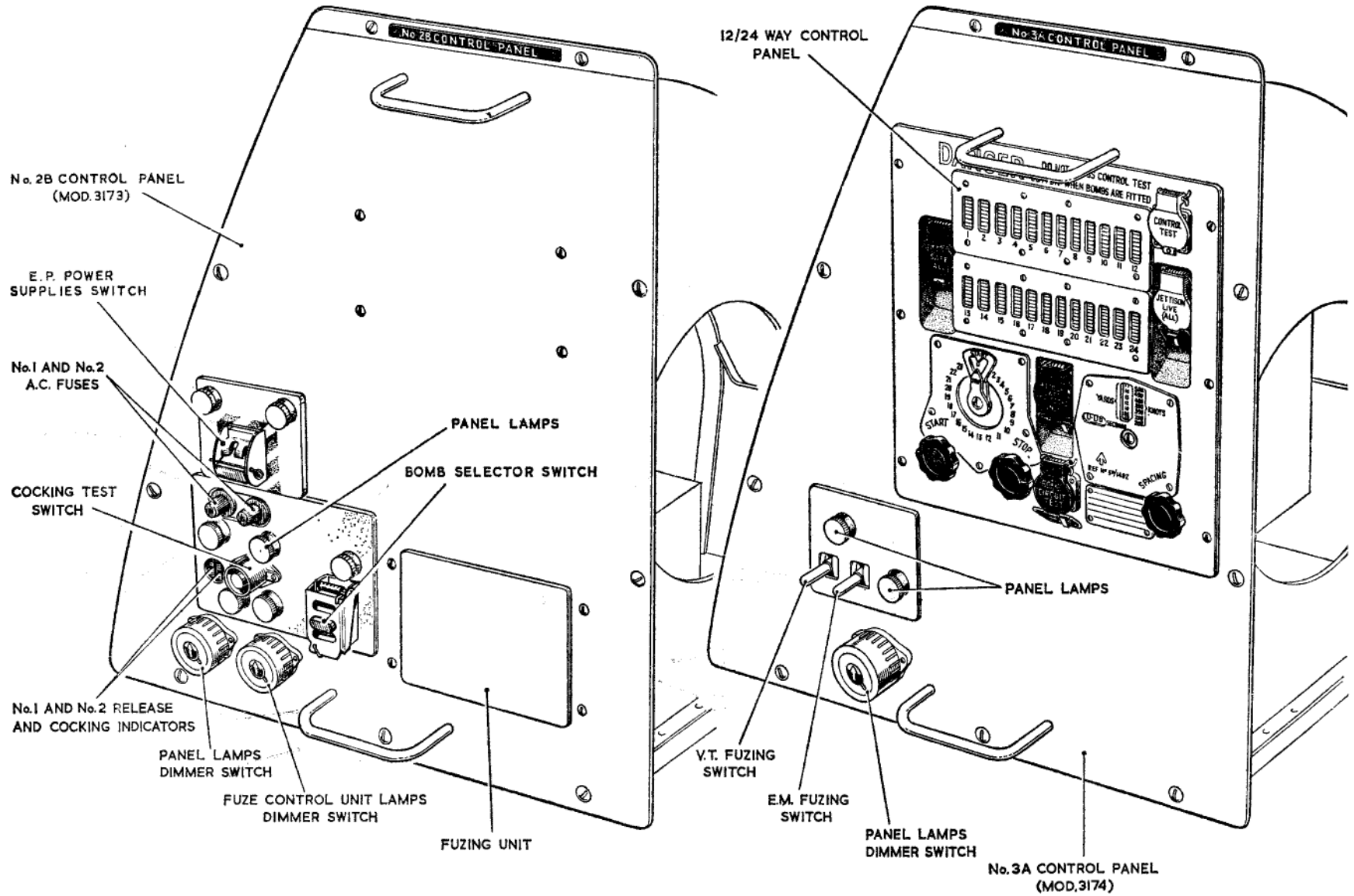


Fig. 6. Bomb-aimer's control panels

RESTRICTED

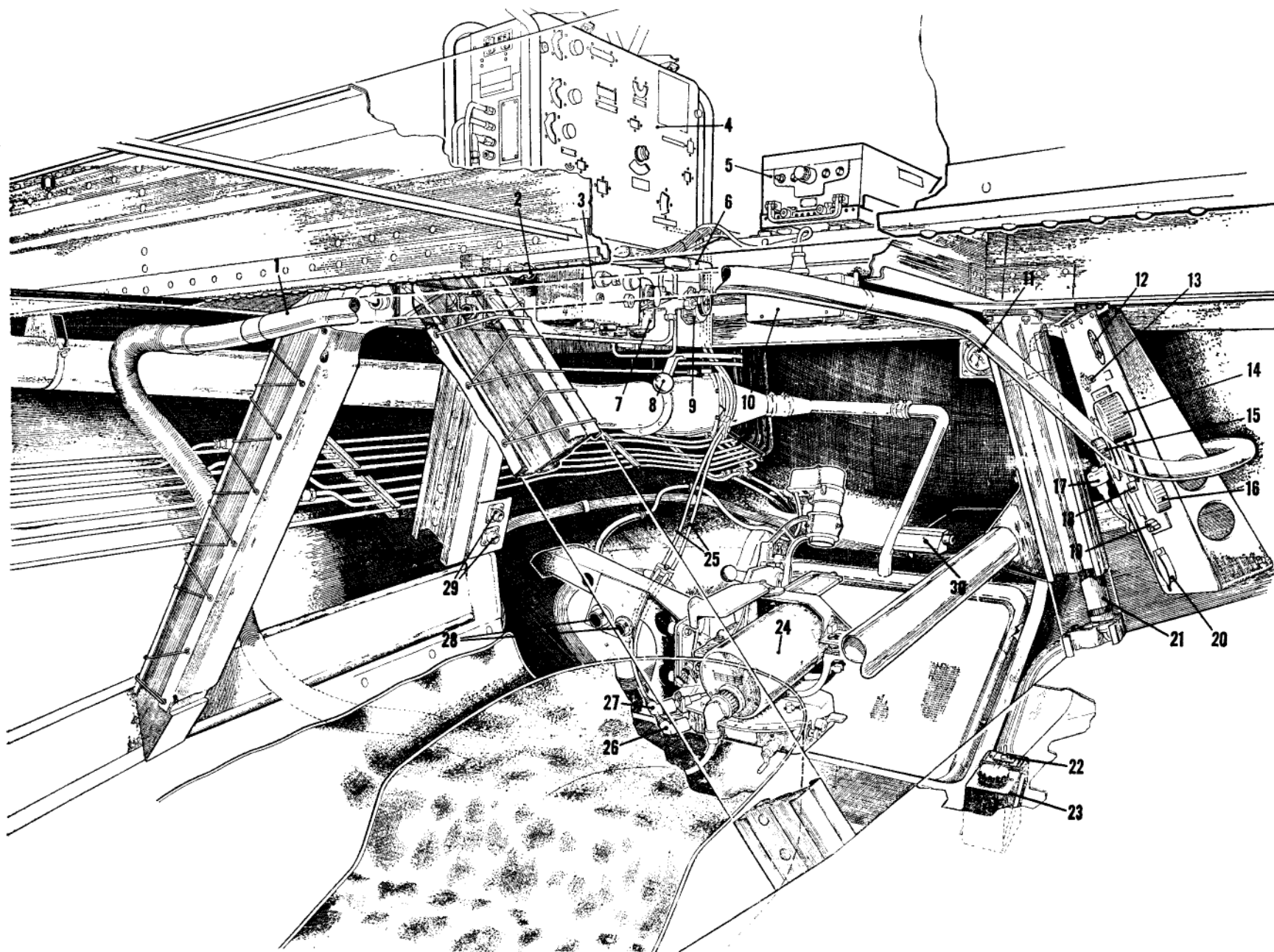


Fig. 7. Bomb-aimer's station—bomber role

RESTRICTED

KEY TO FIG. 7 (BOMB-AIMER'S STATION—BOMBER ROLE)

- | | |
|---|---|
| 1 OXYGEN SUPPLY HOSE | 18 OXYGEN EMERGENCY PRESS TO TEST SWITCH |
| 2 INTERCOMM. SOCKET (post-Mod. 2434) | 19 OXYGEN REGULATOR |
| 3 T.4 BOMB SIGHT GYRO CONTROL UNIT | 20 JETTISON LIVE PUSH SWITCH |
| 4 T.4 BOMB SIGHT COMPUTOR | 21 BOMB-AIMER'S PANEL FLOOD LAMP |
| 5 T.4 BOMB SIGHT AMPLIFIER | 22 DRIFT SMOOTHING CUT-OUT SWITCH (post-Mod. 2435 or 2719) |
| 6 STALK LAMP | 23 AUTO-PILOT AZIMUTH CONTROLLER (post-Mod. 2140 or 2719) |
| 7 T.4 BOMB SIGHT LIGHTING CONTROL | 24 SIGHTING HEAD |
| 8 DE-MISTING CONTROL LEVER | 25 T.4 BOMB SIGHT FLEXIBLE DRIVES (post-Mod. 2434) |
| 9 STALK LAMP DIMMER SWITCH | 26 DRIFT ANGLE FLEXIBLE DRIVE CONNECTOR |
| 10 T.4 BOMB SIGHT JUNCTION BOX | 27 SIGHTING ANGLE FLEXIBLE DRIVE CONNECTOR |
| 11 AIR PRESSURE GAUGE (post-Mod. 1648) | 28 SIGHT CONNECTOR STOWAGES |
| 12 ANGLE-POISE SUPPLY SOCKET | 29 STOWAGES FOR FLEXIBLE DRIVES |
| 13 OXYGEN REGULATOR CONNECTOR STOWAGE (post-Mod. 2398) | 30 ABANDON AIRCRAFT WARNING SIGN (post-Mod. 2828) |
| 14 ANGLE-POISE LIGHTING DIMMER SWITCH | |
| 15 BOMB-AIMER'S WINDOW DE-ICING SWITCH | |
| 16 FLOOD LAMP DIMMER SWITCH | |
| 17 BOMB RELEASE PUSH SWITCH (pre-Mod. 2140 and post-Mod. 2719) | |

RESTRICTED

KEY TO FIG. 8 (BOMB-AIMER'S STATION—P.R. ROLE)

- | | |
|--|--|
| 1 PORT HEATING SUPPLY DUCT
(post-Mod. 2023) | 28 SIGHTING HEAD GUARD
(stowed) |
| 2 HEATING CONTROL LEVER | 29 BOMB-AIMER'S WINDOW DE-MISTING DIFFUSER |
| 3 PORT HEATING SUPPLY DIFFUSER
(post-Mod. 2023) | 30 SIGHTING HEAD |
| 4 OXYGEN SUPPLY HOSE | 31 TILT ANGLE INDICATOR |
| 5 AIR DUCTING FOR WINDOW DE-MISTING | 32 STARBOARD HEATING SUPPLY DIFFUSER
(post-Mod. 2023) |
| 6 SIGHT CONNECTOR STOWAGES | 33 STARBOARD HEATING SUPPLY DUCT
(post-Mod. 2023) |
| 7 SIGHT GYRO A.C. SUPPLY FUSE BLOCK | 34 DRIFT SMOOTHING CUT-OUT SWITCH
(post-Mod. 2719) |
| 8 TYPE 35 CONTROLLER CONNECTORS STOWAGE PLATE (stowed) | 35 G.4B COMPASS REPEATER |
| 9 CAMERA START AND FLASH RELEASE SWITCH | 36 BOMB-AIMER'S CHEST CUSHION |
| 10 FLASH STOP SWITCH | 37 CAMERA SIGHT |
| 11 CAMERA STOP SWITCH | 38 STOWAGE FOR DAY ROLE TYPE 80 CONTROLLER CONNECTORS |
| 12 FLASHES PULSED COUNTER | 39 WEDGE PLATE FOR DAY ROLE TYPE 80 CONTROLLER |
| 13 EXPOSURES COUNTER | 40 STOWAGE FOR DAY ROLE TYPE 35 TO No. 16 CONTROLLER CONNECTORS |
| 14 DOORS SELECTED OPEN AND POWER ON INDICATOR | 41 EDGE LIGHTING LAMPS |
| 15 GYRO SIGHT ON/OFF SWITCH | 42 NIGHT ROLE CAMERA PULSING AND FLASH PULSING INDICATOR PANEL
(post-Mod. 2707) |
| 16 RATIO UNISELECTOR RESET SWITCH | 43 TYPE 80 MOUNTING CONTROLLER |
| 17 RATIO UNISELECTOR RESET INDICATOR | 44 TYPE 36 No. 16 CAMERA |
| 18 SIGHT LIGHTING DIMMER SWITCH | 45 DOORS SELECTED "OPEN" AND "POWER ON" INDICATOR |
| 19 DAY ROLE TYPE 80 CONTROLLER | 46 CAMERA WINDOWS DOORS SWITCH |
| 20 PANEL FLOOD LAMP | 47 CAMERA SIGHT CONTROL |
| 21 DAY ROLE TYPE 35, No. 16 CAMERA CONTROLLER | 48 STOWAGES FOR TYPE 80 MOUNTING CONTROLLER |
| 22 DAY ROLE CAMERA PULSING INDICATOR PANEL | 49 FUSE BLOCK |
| 23 PANEL FLOOD LAMP DIMMER SWITCH | 50 ABANDON AIRCRAFT WARNING SIGN
(post-Mod. 2828) |
| 24 EDGE LIGHTING DIMMER SWITCH | |
| 25 CAMERA WINDOW DOORS SWITCH | |
| 26 BOMB-AIMER'S WINDOW DE-ICING PIPING | |
| 27 BOMB-AIMER'S PANEL | |

RESTRICTED

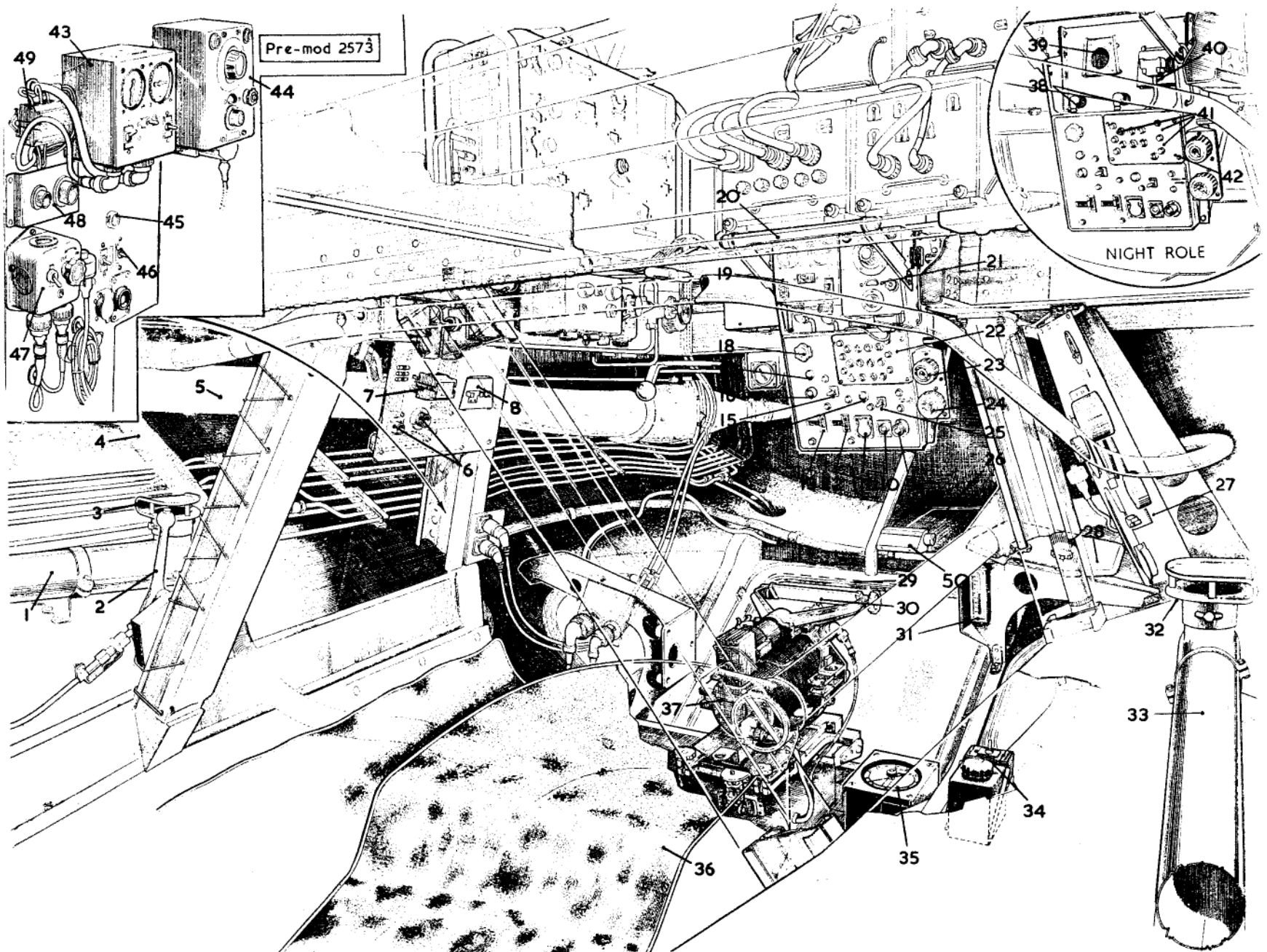


Fig. 8. Bomb-aimer's station—P.R. role

RESTRICTED

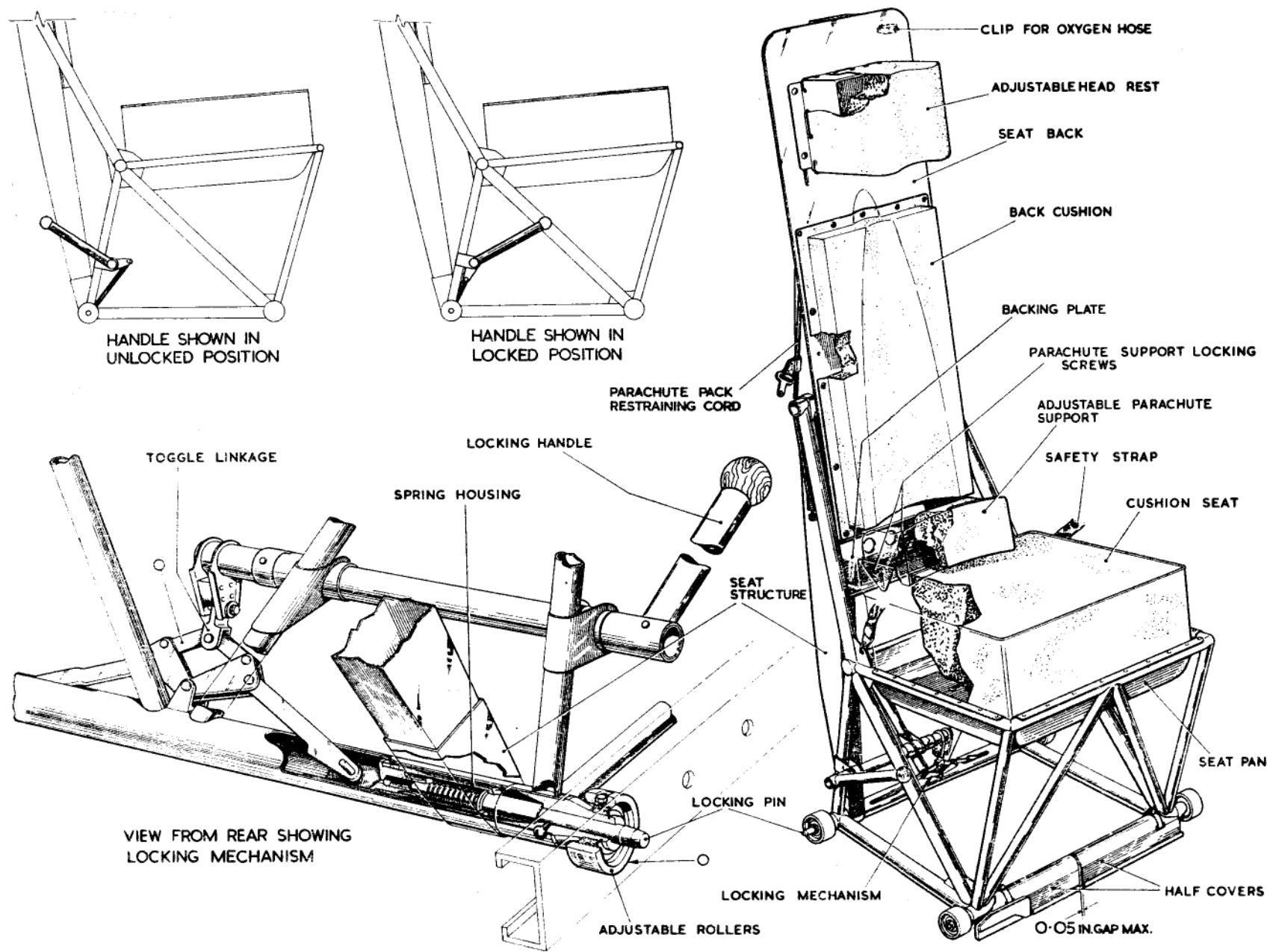


Fig. 9. Crew seat

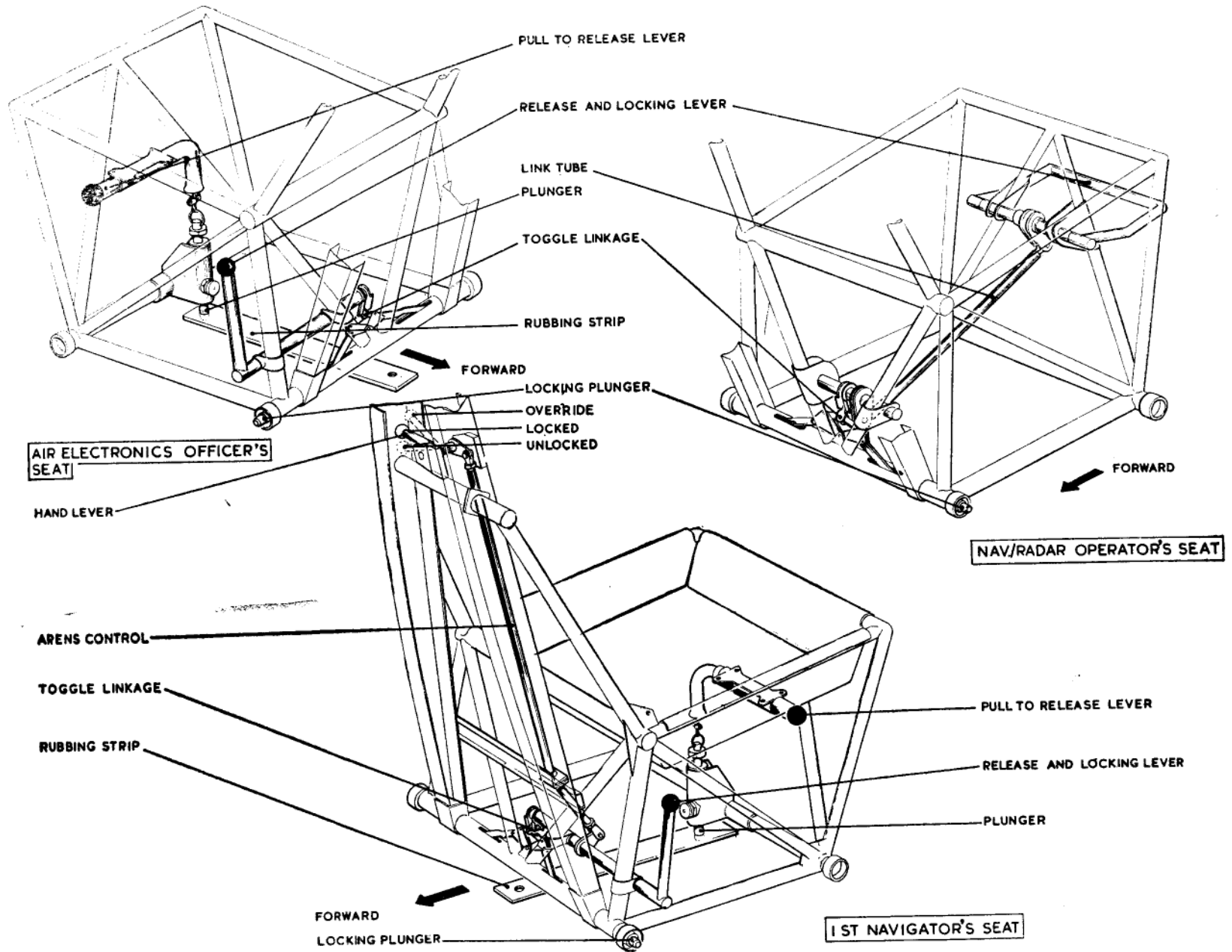


Fig. 9A. Seat locking mechanisms Mod. 2878, 2879

RESTRICTED

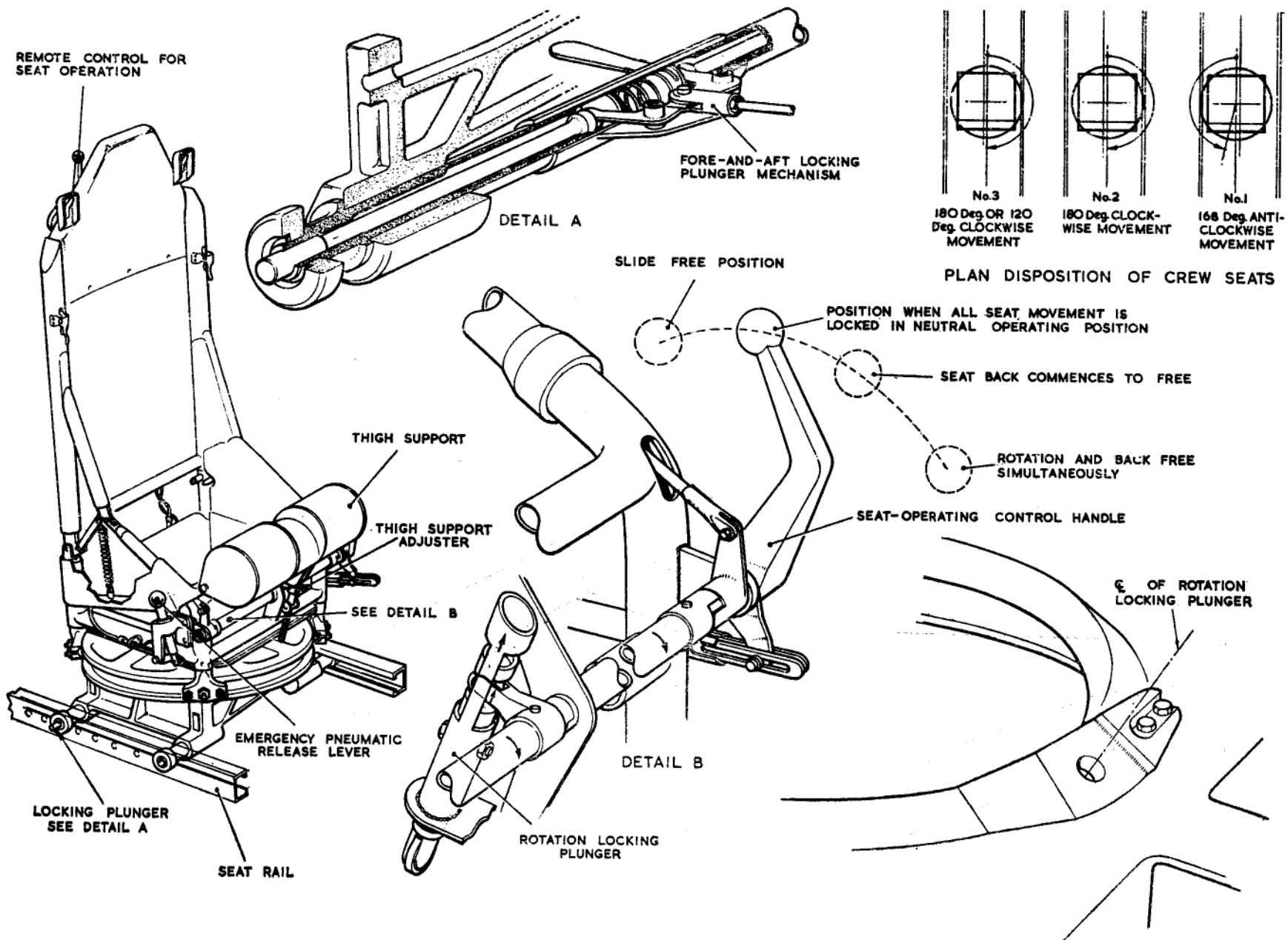


Fig. 9B. Crew seat, universal swivel type (Mod. 3193)

RESTRICTED

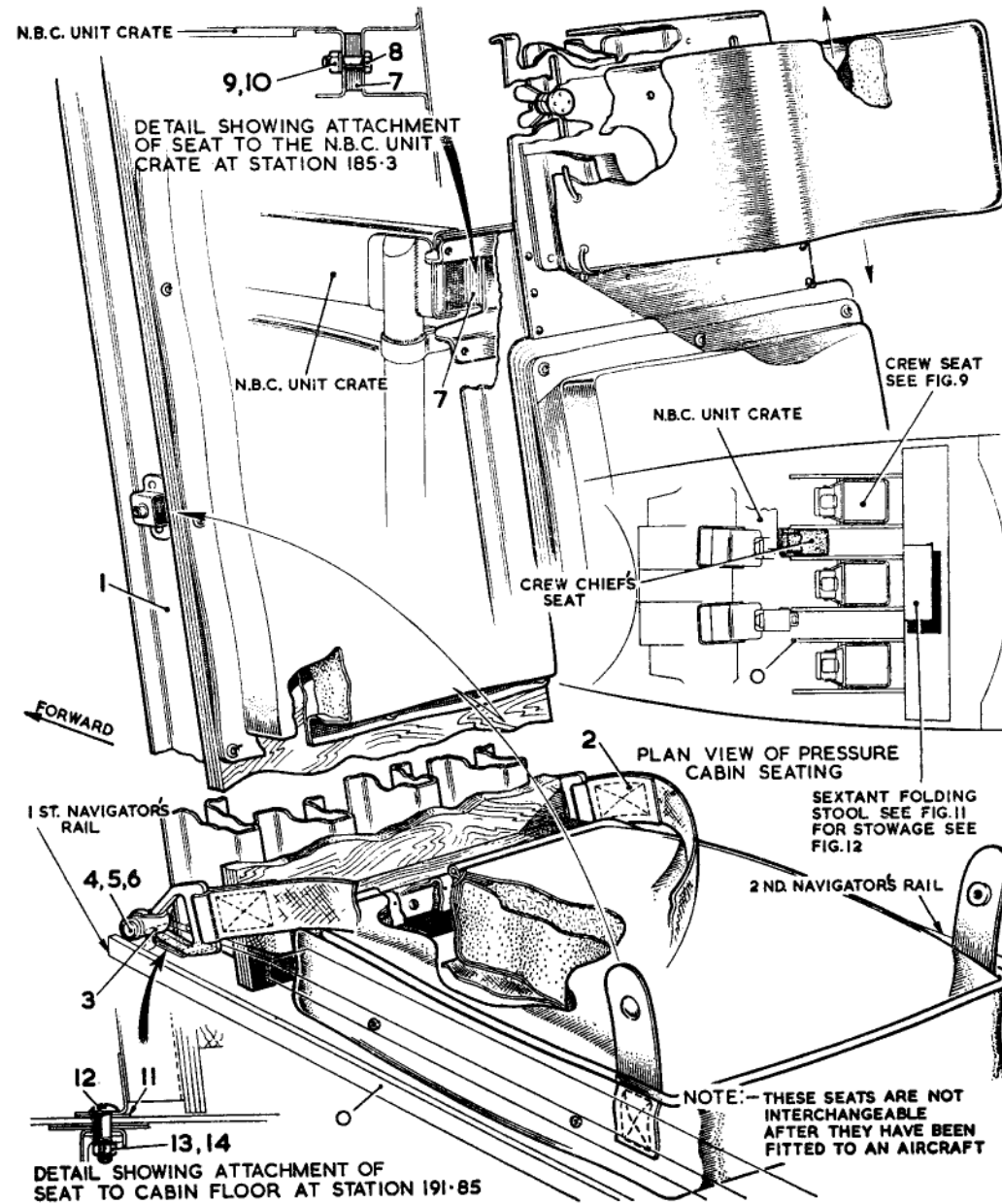
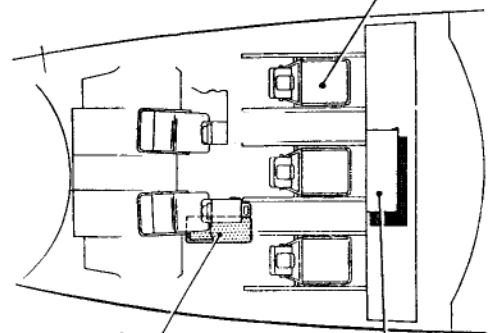


Fig. 10. Crew chief's seat, B Mk. 1 and B/K Mk. 1 aircraft

RESTRICTED

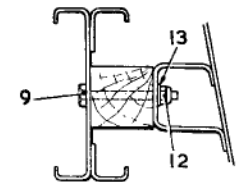
PLAN VIEW OF PRESSURE CABIN SEATING

CREW SEAT
SEE FIG.9



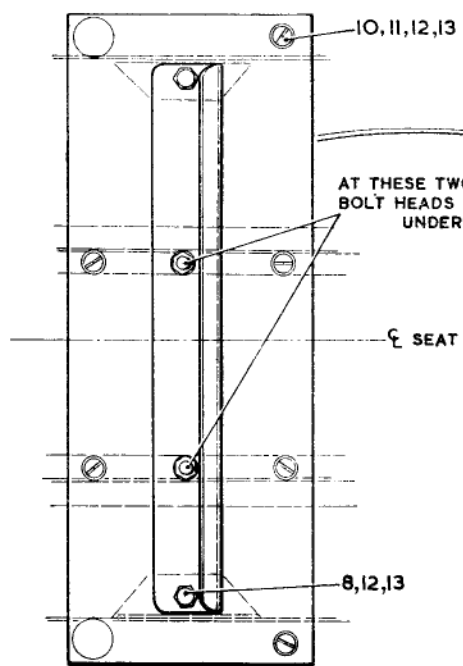
CREW CHIEF'S SEAT

SEXTANT FOLDING
STOOL SEE FIG.11
FOR STOWAGE SEE
FIG.12



DETAIL SHOWING ATTACHMENT
OF SEAT TO PILOT'S FLOOR
BEAM AT STATION 168

NOTE:-
THESE SEATS ARE NOT
INTERCHANGEABLE
AFTER THEY HAVE BEEN
FITTED TO AN AIRCRAFT



AT THESE TWO LOCATIONS
BOLT HEADS TO BE ON
UNDERSIDE

SEAT

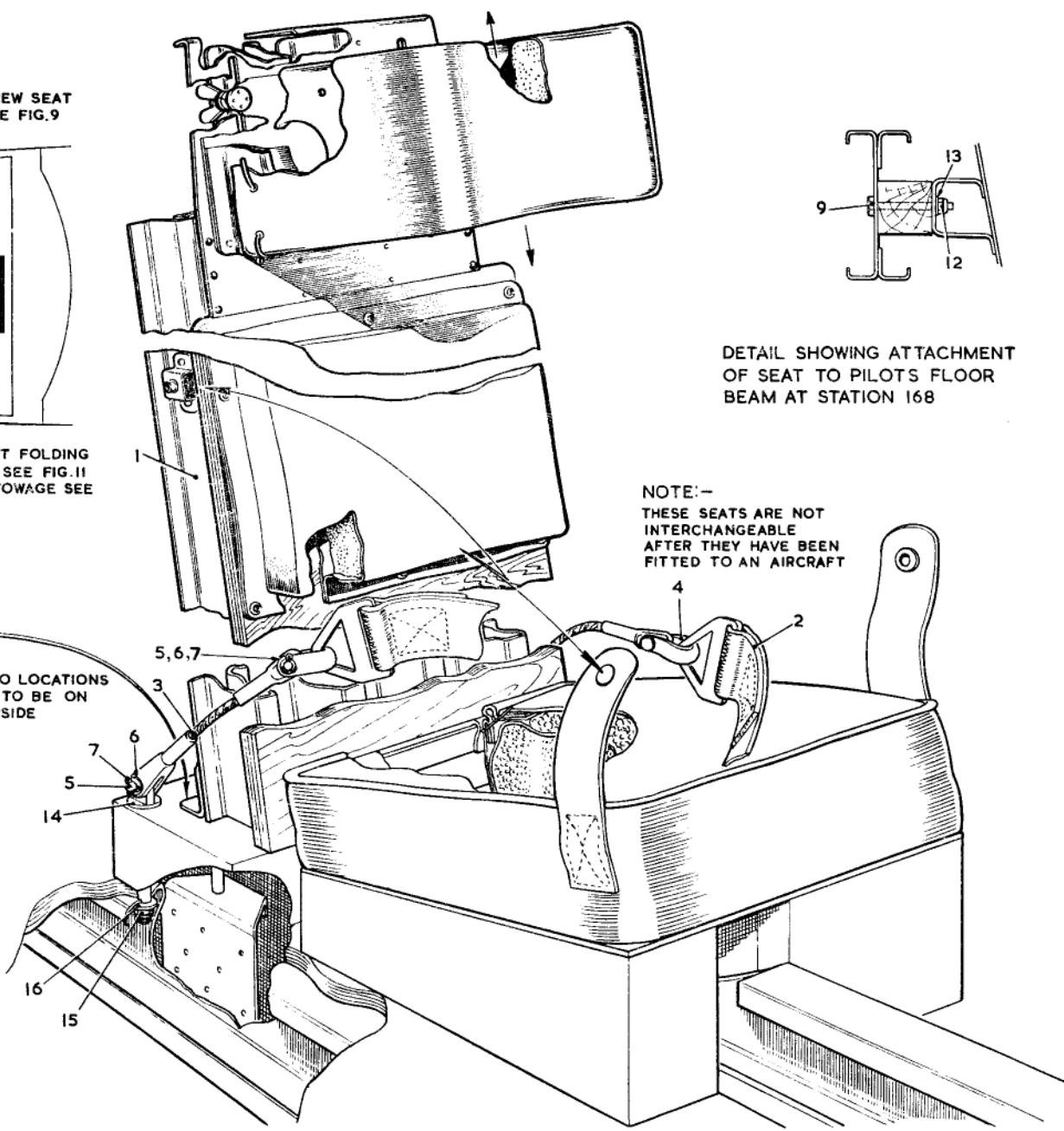


Fig. 10A. Crew chief's seat, B/PR Mk. 1 and B/K/PR Mk. 1 aircraft

RESTRICTED

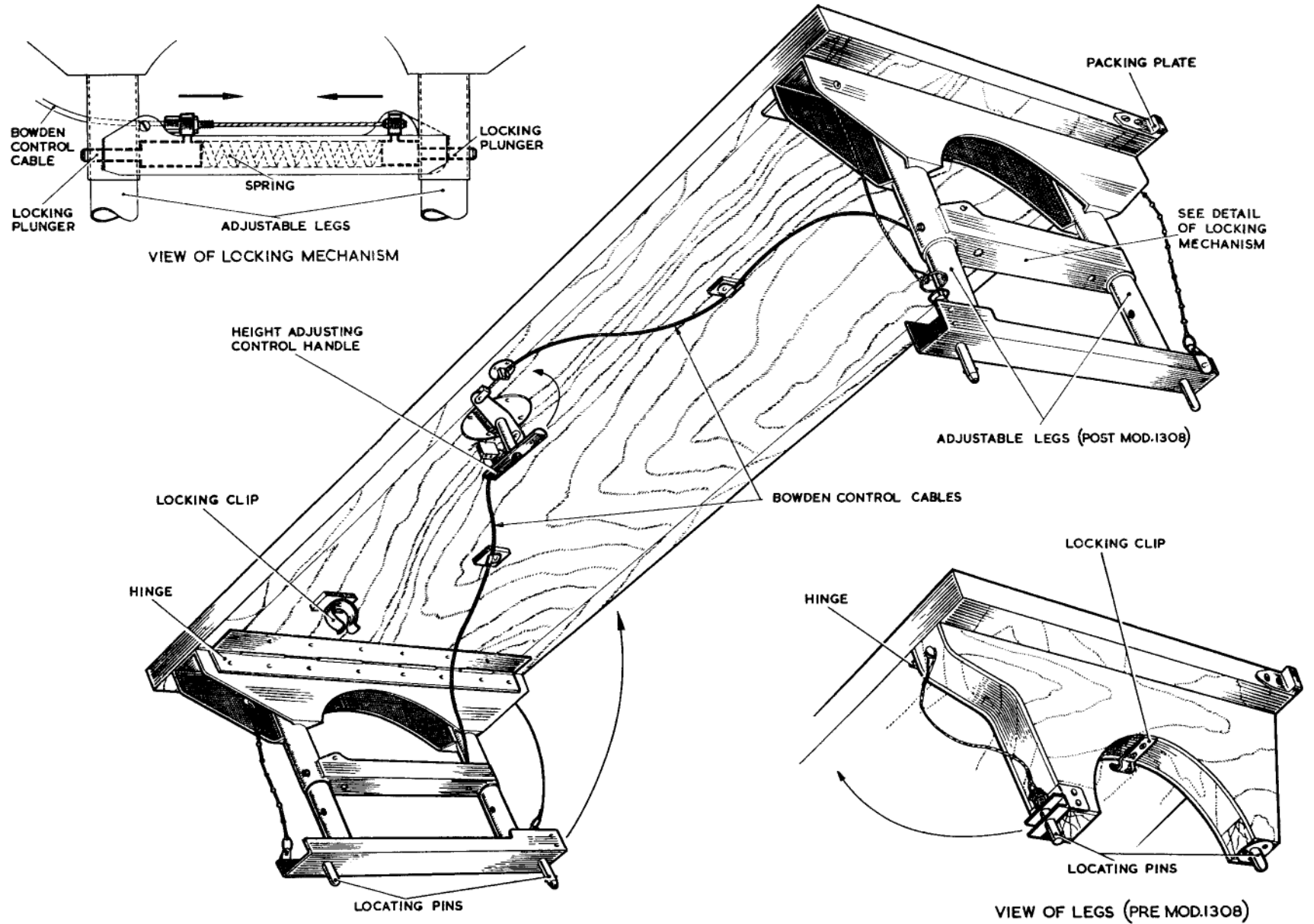


Fig. 11. Sextant station folding stool

RESTRICTED

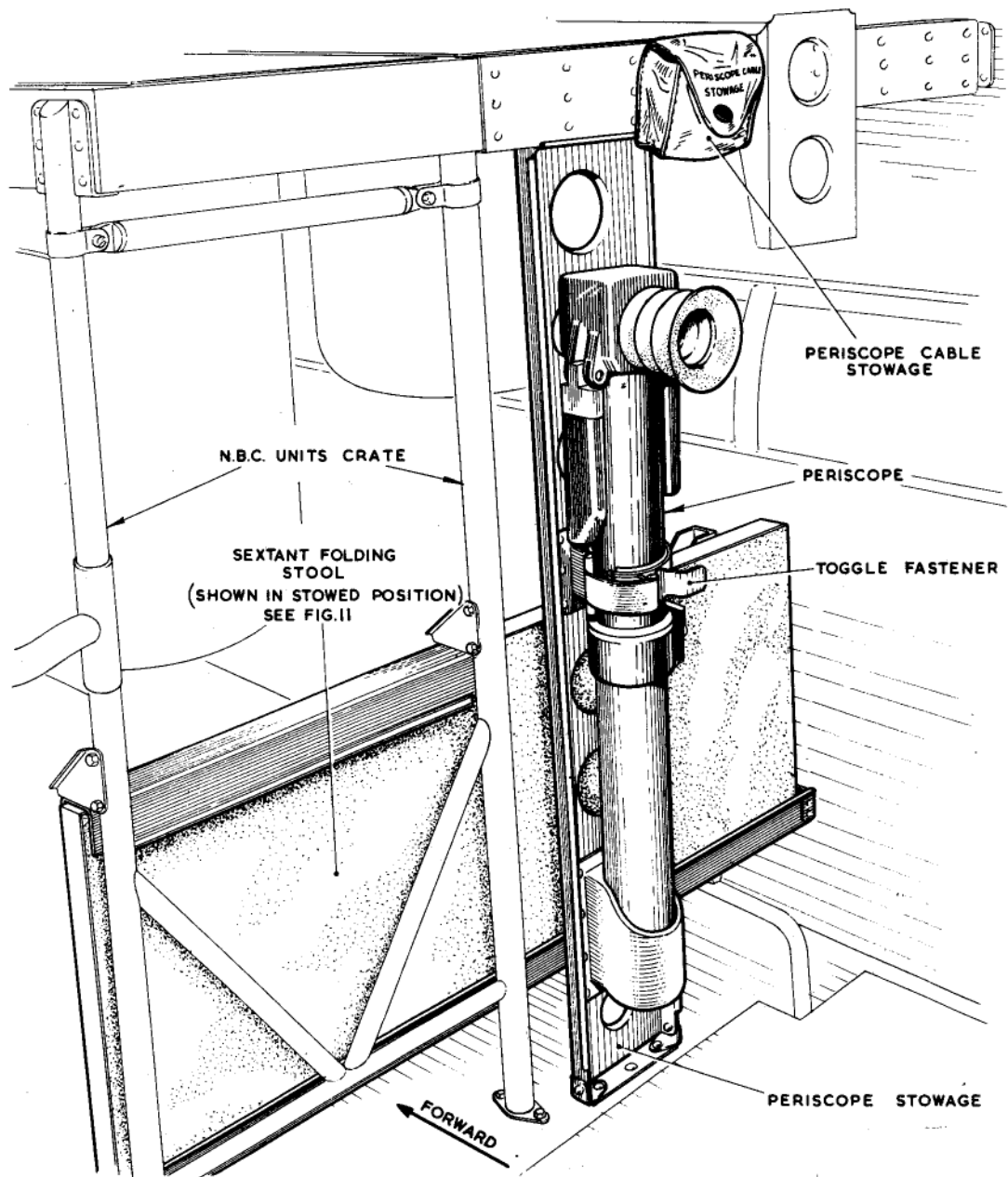


Fig. 12. Periscope stowage

This file was downloaded
from the RTFM Library.

Link: www.scottbouch.com/rtfm

Please see site for usage terms,
and more aircraft documents.

