

Group 8 LOCATION DIAGRAMS

LIST OF ILLUSTRATIONS

	<i>Fig.</i>			<i>Fig.</i>
<i>Location of equipment (1)</i>	1	<i>Elevator out-of-trim equipment</i> 14
<i>Location of equipment (2)</i>	2	<i>Tailplane incidence control equipment</i>	.. 15
<i>Access panels (1)</i>	3	<i>Tailplane incidence control panels</i>	.. 16
<i>Access panels (2)</i>	4	<i>Equipment in battery bay</i> 17
<i>Cockpit lighting</i>	5	<i>Air spoiler compartment</i> 18
<i>Equipment in cockpit</i>	6	<i>Bomb bay micro switches</i> 19
<i>Equipment at crew stations</i>	7	<i>Bomb door control panels</i> 20
<i>Details of equipment in radio crate</i>	8	<i>Deflector control equipment</i> 21
<i>Equipment in consoles and control pedestal</i>	9	<i>Main wheel micro switches</i> 22
<i>Equipment at bomb aimer's position</i>	10	<i>Nosewheel undercarriage micro switches</i>	23
<i>Equipment on panel J</i>	11	<i>Nose undercarriage relay panel</i> 24
<i>Equipment on panel Z</i>	12	<i>Main undercarriage relay panel</i> 25
<i>Equipment near rear spar</i>	13	<i>Rudder/elevator power control unit panel</i>	26

Key to Fig. 1 (Location of equipment (1))

- | | | | |
|------|--|-------|--|
| 1 | SCANNER BAY LAMP SWITCH (post Mod. 994) | ◀ 38A | TOP ANTI-COLLISION LAMP (Mod. 2871) ▶ |
| 2 | SCANNER BAY LAMP SOCKET (post Mod. 994) | 39 | ELEVATOR FEEL UNIT CYLINDER HEATER MUFF |
| 3 | CONNECTOR BLOCK (post Mod. 994) | 40 | RUDDER FEEL UNIT CYLINDER HEATER MUFF |
| 4 | SCANNER BAY LAMP (post Mod. 994) | 41 | RUDDER/ELEVATOR POWER UNIT STARTER AND HEATER PANEL |
| 5 | STARBOARD CONSOLE | 42 | TAILPLANE INCIDENCE CONTROL PANEL |
| 6 | PILOT'S INSTRUMENT PANEL | 43 | RUDDER TRIM TAB ACTUATOR |
| 7 | STARBOARD COAMING PANEL | 44 | ELEVATOR TRIM TAB ACTUATOR |
| 8 | PILOT'S FUEL PANEL | 45 | CONNECTOR BLOCK FOR RUDDER TRIM TAB ACTUATOR |
| 9 | RATION HEATER | 46 | TAIL NAVIGATION LAMPS (2) |
| 10 | HOOD DETONATOR EXPLOSIVE BOLT TERMINAL BLOCKS | 47 | TERMINAL BLOCK FOR TAIL NAVIGATION LAMPS |
| 11 | PILOT'S INSTRUMENT PANEL ROOF FLOOD LAMPS (2) | 48 | TAILPLANE INCIDENCE GEARBOX SWITCH BOX |
| 12 | PILOT'S CABIN LAMP | 49 | TAILPLANE INCIDENCE GEARBOX AND MOTORS |
| 13 | SNATCH PLUG AND SOCKET FOR SUPPLIES TO HOOD LAMP | 50 | ELEVATOR TRIM INDICATOR SWITCH BOX |
| 14 | RESISTANCES FOR HOOD DETONATION EXPLOSIVE BOLTS | ◀ 50A | BOTTOM ANTI-COLLISION LAMP (Mod. 2871) ▶ |
| 15 | CREW CABIN LAMP | 51 | PANEL W |
| 16 | RELAY, TYPE S2, FOR HOOD DETONATION | 52 | RUDDER FEEL UNIT TRIM ACTUATOR |
| 17 | BATTERIES FOR HOOD DETONATION | 53 | AILERON FEEL UNIT CYLINDER HEATER MUFF |
| 18 | HYDRAULIC PUMP CONTACTORS AND START UNITS (post Mod. 1710) | 54 | FLAP AND AIR BRAKE CONTROL PANEL |
| 19 | SERVICE LAMPS (11) | 55 | AILERON POWER CONTROL UNIT |
| 20 | MAIN UNDERCARRIAGE CONTROL PANELS (2) | 56 | AILERON FEEL UNIT TRIM ACTUATOR |
| 21 | MAIN UNDERCARRIAGE MAIN MOTOR START AND BRAKE RESISTANCE (2) | 57 | AILERON POWER CONTROL STARTER AND HEATER PANEL |
| 21A | UPLOCK DETONATOR RESISTANCE BOX | +58 | MAIN UNDERCARRIAGE DOWNLOCK MICRO SWITCHES (2) |
| +22 | MAIN UNDERCARRIAGE UPLOCK MICRO SWITCHES (2) | 59 | RESISTANCE BOX FOR MAIN UNDERCARRIAGE DOOR EXPLOSIVE BOLTS (2) |
| / 23 | MAIN UNDERCARRIAGE DOOR MICRO SWITCHES (2) | 60 | MAIN UNDERCARRIAGE DOOR EXPLOSIVE BOLTS |
| 24 | MAIN UNDERCARRIAGE UPLOCK EXPLOSIVE BOLTS | 61 | MAIN POWER PANEL J |
| 25 | MAIN UNDERCARRIAGE DOOR EXPLOSIVE BOLTS | 62 | INSPECTION LAMP SOCKET |
| 26 | LANDING AND TAXI LAMPS (2) | 63 | RADIO (NAVIGATOR'S) CRATE |
| 27 | WING TIP NAVIGATION LAMPS (2) | 64 | TAILPLANE INCIDENCE RELAY PANEL (post Mod. 2123) |
| 28 | TERMINAL BLOCK FOR WING TIP NAVIGATION LAMPS (2) | 65 | ENTRANCE DOOR POSITION INDICATOR MICRO SWITCH |
| 29 | AILERON TRIM TAB ACTUATOR | 66 | DOWNWARDS IDENTIFICATION LAMP |
| 30 | WING TO WING STALK JUNCTION BOX (2) | 67 | SNATCH PLUG AND SOCKET FOR ENTRANCE DOOR JETTISON |
| 31 | MAIN UNDERCARRIAGE DOOR JUNCTION BOX (2) | 68 | CONTROLS PARKING AND HOOD DETONATION LEVER |
| 32 | MAIN UNDERCARRIAGE DOOR EMERGENCY MOTOR (2) | 69 | PORT CONSOLE |
| 33 | MAIN UNDERCARRIAGE DOOR MAIN MOTOR (2) | 70 | THROTTLE/UNDERCARRIAGE POSITION WARNING HORN MICRO SWITCHES |
| 34 | MAIN UNDERCARRIAGE ACTUATOR EMERGENCY MOTOR (2) | 71 | BOMB AIMER'S PANEL |
| 35 | MAIN UNDERCARRIAGE ACTUATOR MAIN MOTOR (2) | 72 | THROTTLE/UNDERCARRIAGE POSITION WARNING HORN |
| 36 | PANEL V | 73 | PILOT'S TAILPLANE INCIDENCE CONTROL SWITCH |
| 37 | AIR BRAKE GEAR BOX | 74 | CONTROL PEDESTAL |
| 38 | FLAP GEAR BOX | | |

RESTRICTED

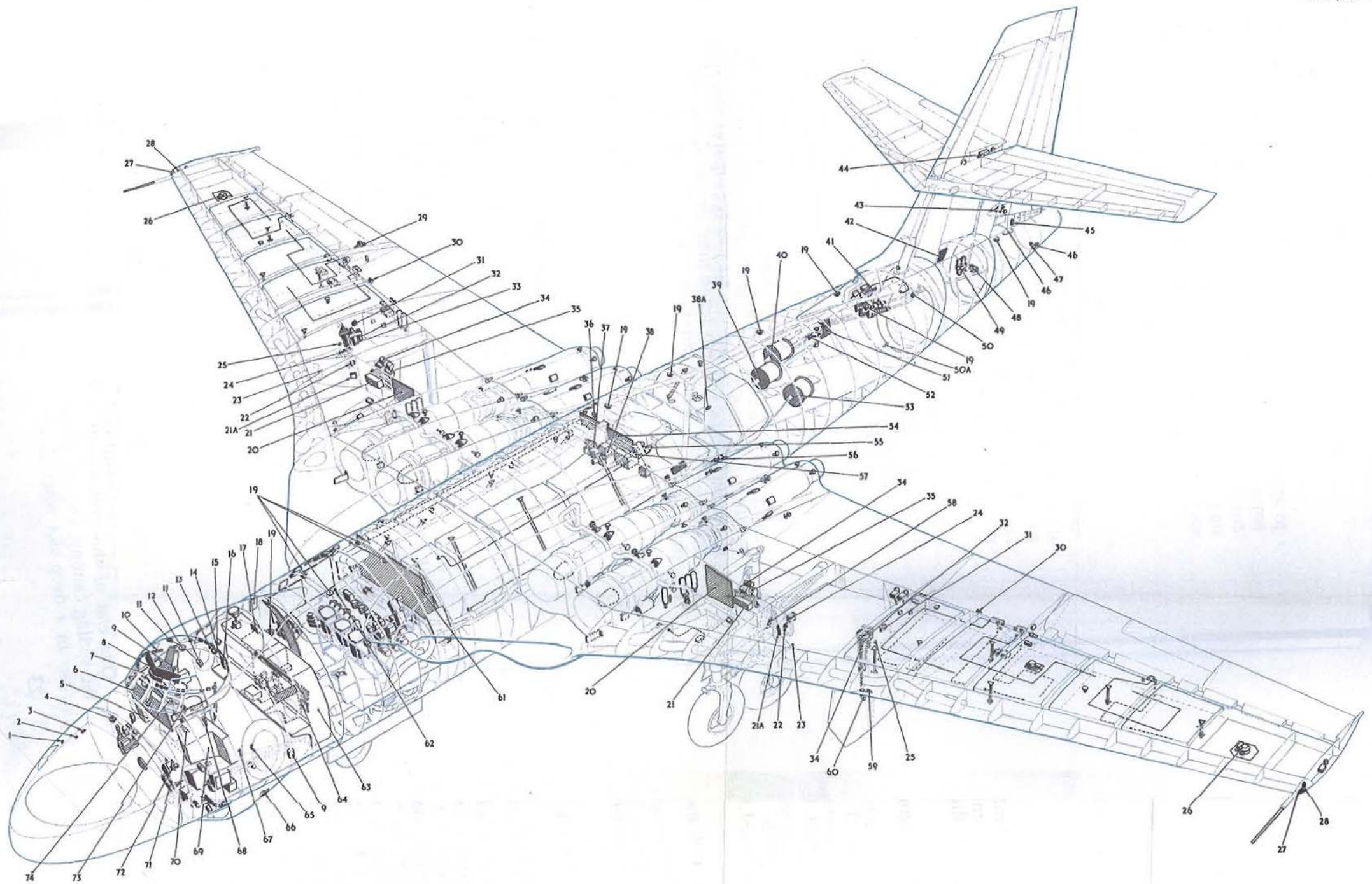


Fig. 1. Location of equipment (B Mk.I and B(PR) Mk.I)

RESTRICTED

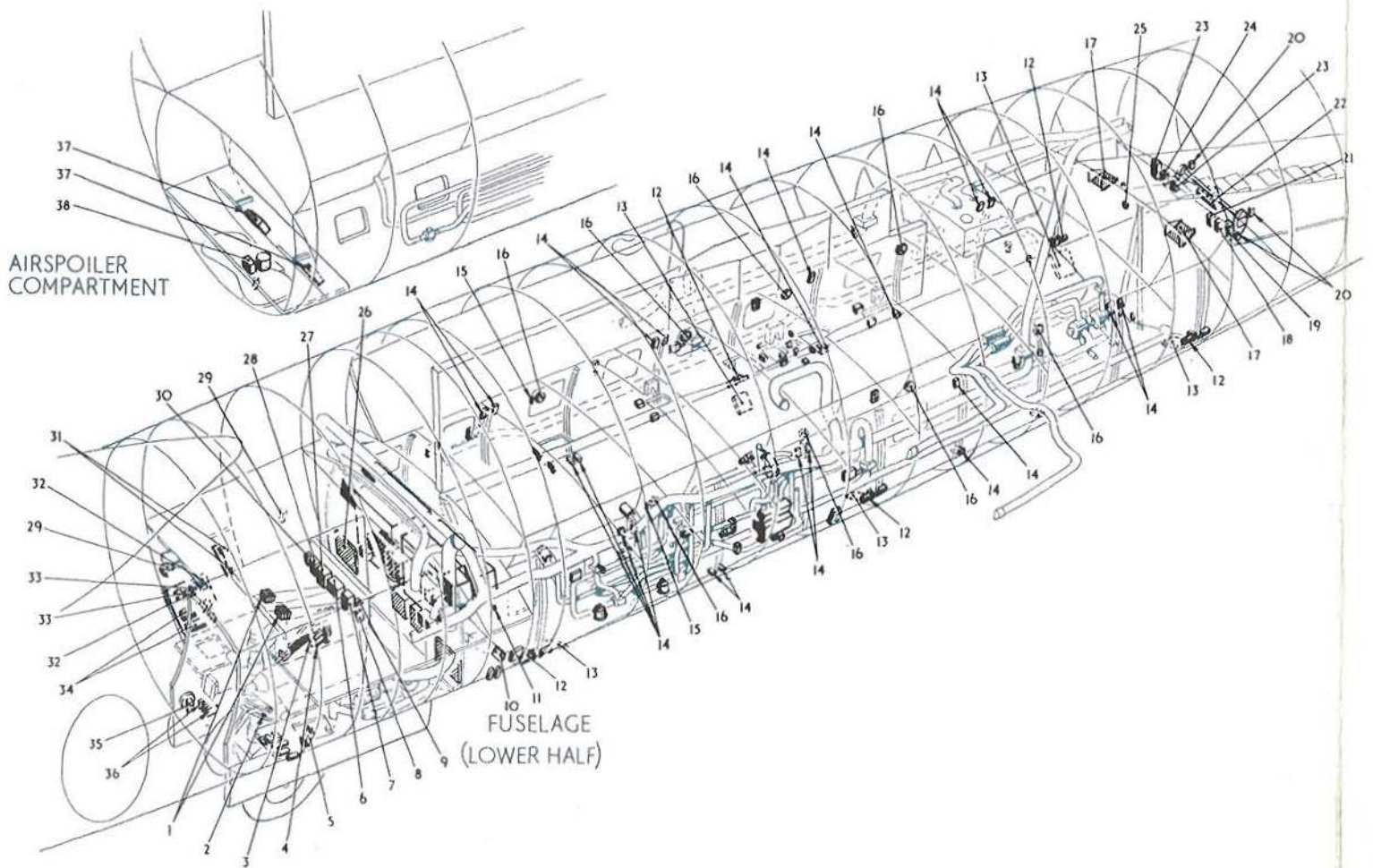


Fig. 2 Location of equipment (2) B. Mk. I.

RESTRICTED

Key to Fig. 2

(Location of equipment (2) B. Mk. 1)

- | | |
|---|--|
| 1 NOSEWHEEL DOWNLOCK MICRO SWITCHES | 22 DEFLECTOR MOTORS |
| 2 NOSEWHEEL CENTRE MICRO SWITCH | 23 DEFLECTOR JETTISON OPEN RELAY (pre-Mod. 1756) |
| 3 NOSE UNDERCARRIAGE MAIN ACTUATOR | 24 DEFLECTOR NORMAL OPEN RELAY (pre-Mod. 1756) |
| 4 NOSE UNDERCARRIAGE EMERGENCY ACTUATOR | 25 BOMB BAY INSPECTION LAMP SOCKET |
| 5 PITOT SWITCH FOR UNDERCARRIAGE SWITCH LOCK | 26 24-VOLT BATTERY CONTROL PANEL |
| 6 NOSEWHEEL ACTUATION MAIN BRAKE HOLD-IN RESISTANCE | 27 NOSEWHEEL ACTUATION CLUTCH SLIP RELAY BOX |
| 7 NOSEWHEEL ACTUATION REVERSING RELAY | 28 NOSEWHEEL ACTUATION MAIN CONTACTOR (pre-Mod. 1756)
(on panel J Post Mod. 786) |
| 8 NOSEWHEEL ACTUATION SLUGGED RELAY | 29 INSPECTION LAMPS |
| 9 NOSEWHEEL ACTUATION EMERGENCY CONTACTOR | 30 EXTERNAL STEERING HOLD-OFF RELAY |
| 10 BOMB DOOR ISOLATOR SWITCH PANEL | 31 PRESSURE SWITCHES FOR HYDRAULIC PUMP MOTORS |
| 11 BOMB BAY SERVICE LAMPS CIRCUIT BREAKER | 32 STARTING CONTACTOR FOR HYDRAULIC PUMP MOTORS
(1710) |
| 12 BOMB DOOR ACTUATORS | 33 STARTING RESISTANCES FOR HYDRAULIC PUMP MOTORS
(1710) |
| 13 BOMB DOOR ACTUATOR RELAY PANELS | 34 NOSEWHEEL STEERING AND MAIN WHEEL BRAKE HYDRAULIC
MOTORS (pre-Mod. 1710) |
| 14 BOMB DOOR MICRO SWITCHES | 35 EXTERNAL SUPPLY SOCKET FOR NOSEWHEEL STEERING AND
HYDRAULIC PUMP MOTORS. |
| 15 BOMB BAY FORWARD SERVICE LAMPS CONNECTOR BLOCK (post Mod. 2195) | 36 NOSEWHEEL UPLOCK MICRO SWITCHES |
| 16 BOMB BAY SERVICE LAMPS | 37 AIR SPOILER ACTUATORS |
| 17 DEFLECTOR CONTROL EQUIPMENT (post Mod. 1756). See Fig. 21 | 38 RELAY FOR AIR SPOILER ACTUATORS |
| 18 DEFLECTOR NORMAL CLOSE RELAY (pre-Mod. 1756) | |
| 19 DEFLECTOR MOTOR REVERSING RELAYS (pre-Mod. 1756) | |
| 20 DEFLECTOR MICRO SWITCHES | |
| 21 DEFLECTOR JETTISON CLOSE RELAY (pre-Mod. 1756) | |

Key to Fig. 4

(Access panels (2))

- 1 ACCESS TO UNDERCARRIAGE DOOR EXPLOSIVE BOLTS AND RESISTANCES
- 2 ACCESS TO UNDERCARRIAGE CONTROL PANEL
- 3 UPLOCK MICRO-SWITCHES AND DETONATOR
- 4 UPLOCK DETONATOR RESISTANCE BOX
- 5 UNDERCARRIAGE DOOR INDICATOR MICRO-SWITCH
- 6 UNDERCARRIAGE DOOR ACTUATOR
- 7 UNDERCARRIAGE DOOR JUNCTION BOX
- 8 ACCESS TO EQUIPMENT IN CABIN
- 9 ACCESS TO RUDDER TRIM TAB ACTUATOR
- 10 ACCESS AND REMOVAL HATCH FOR FLAP GEAR BOX, DIVE BRAKE
GEARBOX, AILERON POWER CONTROL AND EQUIPMENT ON REAR
SPAR
- 11 ACCESS TO AILERON FEEL UNIT TRIM ACTUATOR
- 12 ACCESS TO BOMB DOOR CONTROL NORMAL AND JETTISON OPEN RELAYS
- 13 ACCESS PANEL TO BOMB DOOR CENTRE MOTOR REVERSING RELAY
- 14 ACCESS PANEL TO BOMB DOOR NORMAL AND JETTISON CLOSE RELAYS
- 15 AIR DEFLECTOR CONTROL GEAR AND MOTORS

N

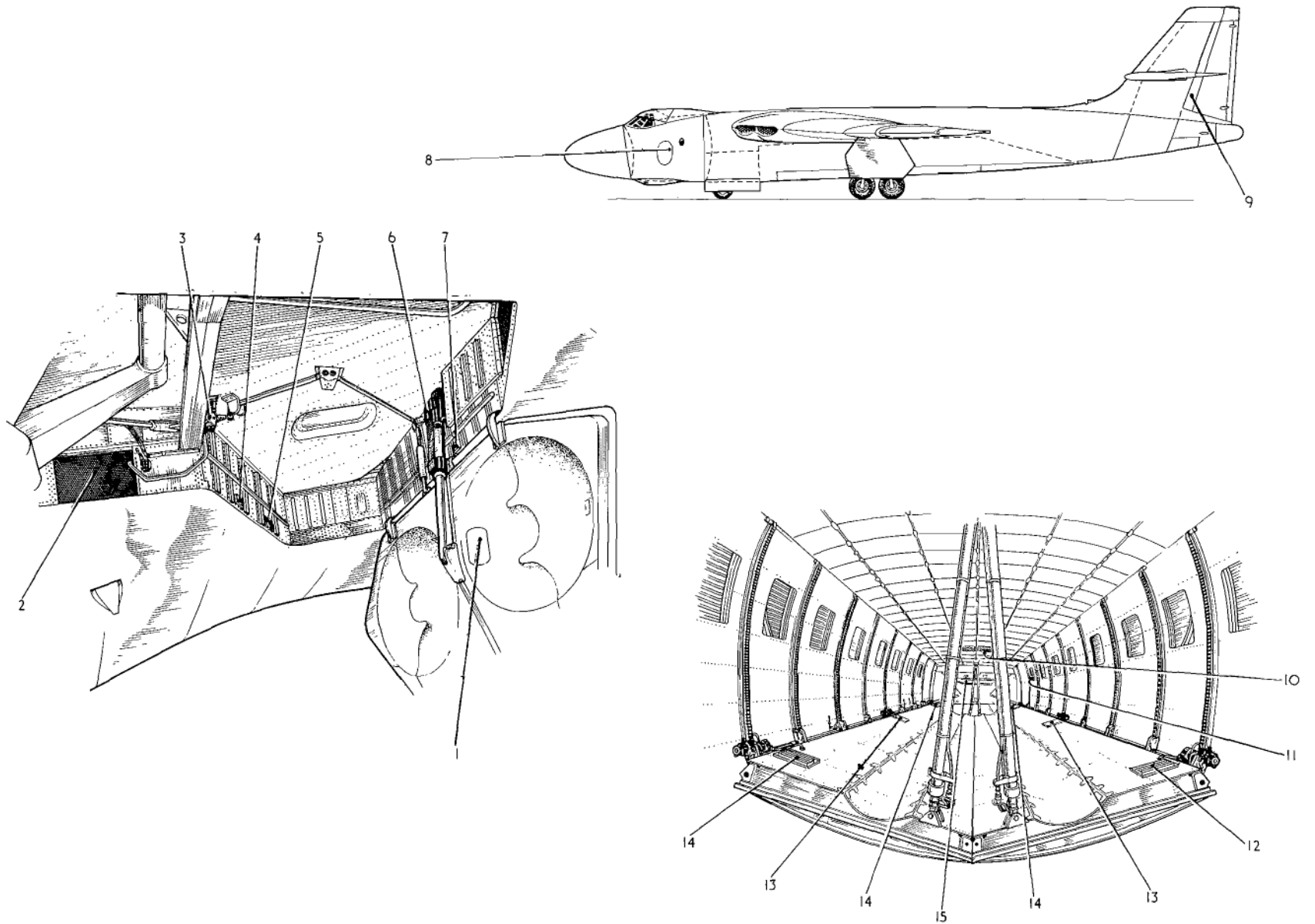


Fig.4 Access panels (2)
RESTRICTED

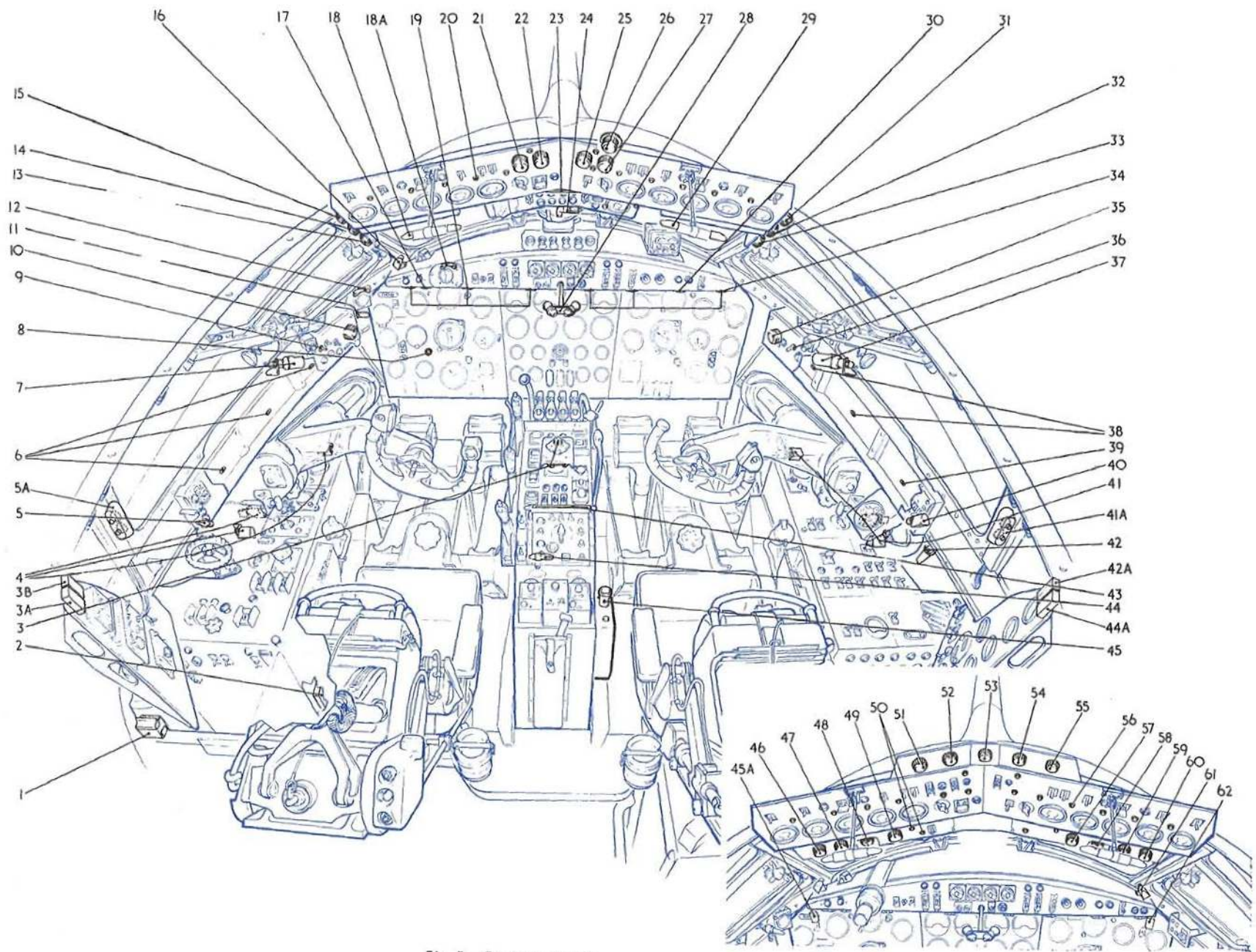


Fig.5 Cockpit lighting.
RESTRICTED

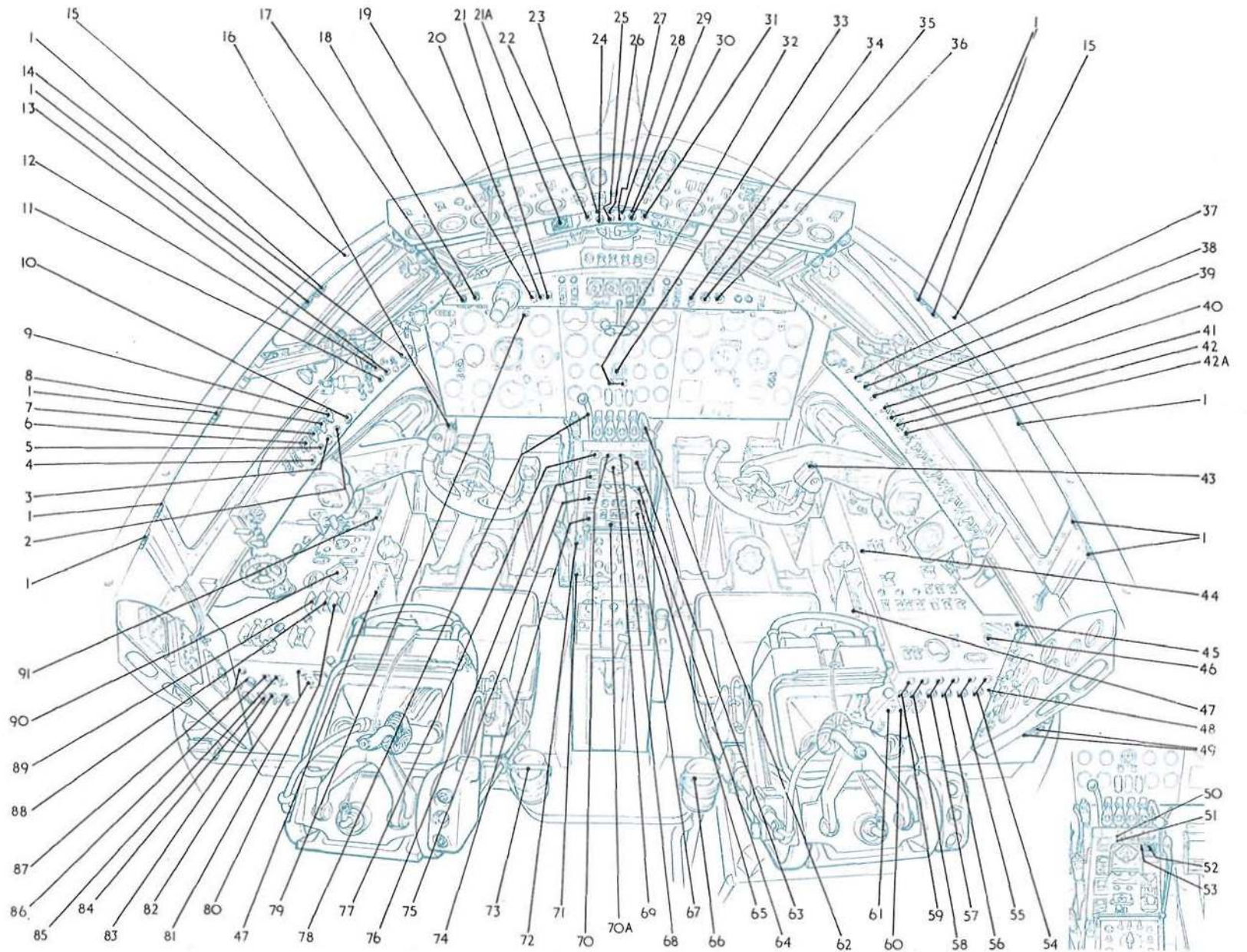
Key to Fig. 5 (Cockpit lighting)

- | | | | |
|-------|---|--------------------------------|--|
| 1 | EMERGENCY LAMPS BATTERY | | |
| 2 | RESISTANCE FOR SIDE U/V LAMPS | | |
| 3 | CONTROL PEDESTAL LAMPS | | |
| 3A | No. 3 RESISTANCE FOR HIGH INTENSITY COCKPIT LAMP (Mod. 1965) | | |
| 3B | No. 4 RESISTANCE FOR HIGH INTENSITY COCKPIT LAMP (Mod. 1965) | | |
| 4 | PORT CONSOLE LAMPS | | |
| 5 | PORT QUARTER PANEL LAMP | | |
| 5A | HIGH INTENSITY COCKPIT LAMPS NOS. 3 AND 4 (Mod. 1965) | | |
| 6 | PORT COAMING PANEL LAMP | | |
| 7 | INSTRUMENT PANEL PORT U/V LAMP | | |
| 8 | BOMB DIRECTION INDICATOR LAMP (post Mod. 2467) | | |
| 9 | INSTRUMENT PANEL PORT EMERGENCY LAMPS SWITCH | | |
| 10 | PORT COAMING PANEL LAMPS DIMMER SWITCH | | |
| 11 | MACHMETER EMERGENCY LAMP | | |
| 12 | ACCELEROMETER LAMPS | | |
| 13 | PORT CONSOLE LAMPS DIMMER SWITCH | | |
| 14 | INSTRUMENT PANEL PORT LAMPS DIMMER SWITCH | } pre-Mod. 2744 | |
| 15 | INSTRUMENT PANEL FLOOD LAMPS DIMMER SWITCH | | |
| 16 | ACCELEROMETER U/V LAMPS (pre-Mod. 2744) | | |
| 17 | INSTRUMENT PANEL PORT EMERGENCY LAMP (Lamp. No. 2) | | |
| 18 | PORT FUEL PANEL TWIN LAMPS | | |
| ◀ 18A | T.A.C.A.N. INDICATOR BRIDGE LIGHT (Mod. 3165 or 3166) ▶ | | |
| 19 | INSTRUMENT PANEL PORT LAMPS (Lamp Nos. 1, 3 and 4, left to right) | | |
| 20 | FUEL PANEL BURIED LAMPS (15 OFF) (pre-Mod. 2296) | | |
| 21 | INSTRUMENT PANEL SIDE U/V LAMPS DIMMER SWITCH | } pre-Mod.
2330 or
2331 | |
| 22 | INSTRUMENT PANEL CENTRE U/V LAMPS DIMMER SWITCH | | |
| 23 | FUEL PANEL TUBULAR LAMP | | |
| 24 | COMPASS LAMP (pre-Mod. 2791) | | |
| 25 | COMPASS LAMP DIMMER SWITCH | | |
| 26 | FUEL LAMP TWIN LAMPS DIMMER SWITCH | } pre-Mod.
2330 or 2331 | |
| 27 | FUEL PANEL BURIED LAMPS DIMMER SWITCH | | |
| 28 | INSTRUMENT PANEL CENTRE U/V LAMPS | | |
| 29 | STARBOARD FUEL PANEL TWIN LAMP | | |
| 30 | INSTRUMENT PANEL STARBOARD EMERGENCY LAMP (Lamp No. 7) | | |
| 31 | CONTROL PEDESTAL LAMPS DIMMER SWITCH | } pre-Mod. 2744 | |
| 32 | INSTRUMENT PANEL STARBOARD LAMP DIMMER SWITCH | | |
| 33 | STARBOARD CONSOLE LAMPS DIMMER SWITCH | | |
| 34 | INSTRUMENT PANEL STARBOARD LAMPS (Lamp Nos. 5, 6 and 8, left to right) | | |
| 35 | STARBOARD COAMING PANEL LAMPS DIMMER SWITCH | | |
| 36 | INSTRUMENT PANEL STARBOARD EMERGENCY LAMPS SWITCH | | |
| 37 | INSTRUMENT PANEL STARBOARD U/V LAMP | | |
| 38 | STARBOARD COAMING PANEL LAMPS | | |
| 39 | STARBOARD COAMING PANEL LAMP ('K' TYPE AIRCRAFT ONLY) | | |
| 40 | STARBOARD QUARTER PANEL LAMPS | | |
| 41 | STARBOARD CONSOLE LAMPS | | |
| 41A | HIGH INTENSITY COCKPIT LAMPS NOS. 1 AND 2 (Mod. 1965) | | |
| 42 | STOWAGE FOR CENTRE U/V LAMPS WHEN NOT IN USE | | |
| 42A | No. 1 RESISTANCE FOR HIGH INTENSITY COCKPIT LAMP (Mod. 1965) | | |
| 43 | CONTROL PEDESTAL TUBULAR LAMPS | | |
| 44 | AUTOPILOT CONTROL PANEL LAMP | | |
| 44A | No. 2 RESISTANCE FOR HIGH INTENSITY COCKPIT LAMP (Mod. 1965) | | |
| 45 | RETRACTABLE WANDER LAMP | | |
| 45A | ACCELEROMETER U/V LAMP (post Mod. 2744) | | |
| 46 | PORT CONSOLE LAMP DIMMER SWITCH (post Mod. 2744) | | |
| 47 | INSTRUMENT PANEL PORT LAMPS DIMMER SWITCH (post Mod. 2744) | | |
| 48 | COMPASS LAMP BUILT INTO COMPASS (post Mod. 2791) | | |
| 49 | INSTRUMENT PANEL FLOOD LAMPS DIMMER SWITCH (post Mod. 2744) | | |
| 50 | ADDITIONAL BURIED LAMPS (2 OFF) (post Mod. 2296) | | |
| 51 | INSTRUMENT PANEL SIDE U/V LAMPS DIMMER SWITCH | } post-Mod.
2330
or 2331 | |
| 52 | INSTRUMENT PANEL CENTRE U/V LAMPS DIMMER SWITCH | | |
| 53 | COMPASS LAMP DIMMER SWITCH | | |
| 54 | FUEL PANEL BURIED LAMPS DIMMER SWITCH | | |
| 55 | FUEL PANEL TWIN LAMPS DIMMER SWITCH | | |
| 56 | FUEL PANEL BURIED LAMPS (18 OFF) (post Mod. 2296) | | |
| 57 | CONTROL PEDESTAL LAMPS DIMMER SWITCH (post Mod. 2744) | | |
| 58 | COMPASS LAMP BUILT INTO COMPASS (post Mod. 2791) | | |
| 59 | INSTRUMENT PANEL STARBOARD LAMP DIMMER SWITCH (post Mod. 2744) | | |
| 60 | STARBOARD CONSOLE LAMPS DIMMER SWITCH (post Mod. 2744) | | |
| 61 | U/V LAMP FOR R.A.T.O.G. PRESSURE INDICATORS (Mod. 2330 or 2331, pre-Mod. 2744) | | |
| 62 | U/V LAMP FOR R.A.T.O.G. PRESSURE INDICATORS (Mod. 2330 or 2331, post Mod. 2744) | | |

Key to Fig. 6 (Equipment in cockpit)

- | | |
|--|--|
| 1 HOOD DETONATION EXPLOSIVE BOLT TERMINAL BLOCKS | 48 TAILPLANE INCIDENCE FINE CONTACTOR TRIPPED LAMP AND RESET PUSH-SWITCH (pre-Mod. 2123) |
| 2 RUDDER-ELEVATOR POWER UNIT NO. 2 FAILURE LAMP | 49 RATION HEATER SWITCHES AND INDICATOR LAMPS |
| 3 RUDDER-ELEVATOR POWER UNIT NO. 1 FAILURE LAMP | 50 DEFLECTOR OPEN/CLOSE INDICATOR (post Mod. 607) |
| 4 AILERON POWER UNIT NO. 1 FAILURE LAMP | 51 BOMB DOOR OPEN/CLOSE INDICATOR |
| 5 AILERON POWER UNIT NO. 2 FAILURE LAMP | 52 BOMB DOOR CONTROL JETTISON SWITCH (post Mod. 2484) |
| 6 AILERON POWER UNIT NO. 1 TRIP PUSH SWITCH | 53 BOMB DOOR CONTROL JETTISON SWITCH NO. 2 (post Mod. 2484) |
| 7 AILERON POWER UNIT NO. 2 TRIP PUSH SWITCH | 54 NOSEWHEEL MAIN CONTACTOR TRIPPED LAMP AND RESET PUSH-SWITCH |
| 8 RUDDER-ELEVATOR POWER UNIT NO. 1 TRIP PUSH SWITCH | 55 STARBOARD WHEEL MAIN CONTACTOR TRIPPED LAMP AND RESET PUSH-SWITCH |
| 9 RUDDER-ELEVATOR POWER UNIT NO. 2 TRIP PUSH SWITCH | 56 PORT WHEEL MAIN CONTACTOR TRIPPED LAMP AND RESET PUSH-SWITCH |
| 10 ENTRANCE DOOR INDICATOR | 57 TAILPLANE INCIDENCE COARSE CONTACTOR TRIPPED LAMP AND RESET PUSH-SWITCH (pre-Mod. 2123) |
| 11 HYDRAULIC SERVICE A, PUMP MOTOR INDICATOR | 58 FLAP MAIN CONTACTOR TRIPPED LAMP AND RESET PUSH-SWITCH |
| 12 INSTRUMENT PANEL EMERGENCY LAMPS SWITCH | 59 AIR BRAKES CONTACTOR TRIPPED LAMP AND RESET PUSH-SWITCH |
| 13 HYDRAULIC SERVICE B, PUMP MOTOR INDICATOR | 60 STARBOARD WHEEL EXTREME EMERGENCY DOWN EXPLOSIVE BOLTS CIRCUIT BREAKER |
| 14 PORT COAMING PANEL LAMPS DIMMER SWITCH | 61 PORT WHEEL EXTREME EMERGENCY DOWN EXPLOSIVE BOLTS CIRCUIT BREAKER |
| 15 HOLES FOR HOOD EXPLOSIVE FIXING BOLTS | 62 FLAP CONTROL LEVER |
| 16 PORT HANDWHEEL TAILPLANE INCIDENCE SWITCH | 63 BOMB DOOR CONTROL JETTISON SWITCH (pre-Mod. 2484) |
| 17 ELEVATOR TRIM INDICATOR 'DOWN' LAMP | 64 UNDERCARRIAGE UP PUSH-SWITCH |
| 18 ELEVATOR TRIM INDICATOR 'UP' LAMP | 65 UNDERCARRIAGE DOWN PUSH-SWITCH |
| 19 { PORT LANDING LAMP SWITCH (pre-Mod. 392) | 66 2ND PILOT'S RATION HEATER |
| 20 { PORT LANDING LAMP FILAMENT SWITCH (post Mod. 392) | 67 UNDERCARRIAGE EMERGENCY DOWN PUSH-SWITCH |
| 21 { STARBOARD LANDING LAMP SWITCH (pre-Mod. 392) | 68 DEFELECTOR OPEN/CLOSED INDICATOR (pre-Mod. 607) |
| 22 { STARBOARD LANDING LAMP FILAMENT SWITCH (post Mod. 392) | 69 TRIMMING SWITCH, FEEL UNITS |
| 23 PORT NACELLE EMERGENCY CLOSE SWITCH | 70 BOMB DOORS OPEN/CLOSED INDICATOR |
| 21A ABANDON AIRCRAFT SWITCH (Mod. 2828) | 70A TAILPLANE INCIDENCE 1ST/2ND PILOT SWITCH (post Mod. 2989) |
| 23 PORT NACELLE OPEN INDICATOR | 71 TAILPLANE INCIDENCE COARSE CONTACTOR TRIP SWITCH (pre-Mod. 2123) |
| 24 PORT NACELLE CLOSED INDICATOR | 72 TAILPLANE INCIDENCE FINE CONTACTOR TRIP SWITCH (pre-Mod. 2123) |
| 25 FUSELAGE FLASH CRATE OPEN INDICATOR (P.R. only) | 73 1ST PILOT'S RATION HEATER |
| 26 AIR SPOILER INDICATOR, PORT (post Mod. 1942 or 2049) | 74 TAILPLANE INCIDENCE COARSE/FINE SWITCH |
| 27 FUSELAGE FLASH CRATE CLOSED INDICATOR (P.R. only) | 75 FLAP CONTROL EMERGENCY SWITCH |
| 28 AIR SPOILER INDICATOR, STARBOARD (post Mod. 1942 or 2049) | 76 TAILPLANE INCIDENCE 1ST PILOT/2ND PILOT SWITCH |
| 29 STARBOARD NACELLE OPEN INDICATOR | 77 BOMB DOOR CONTROL MASTER SWITCH |
| 30 STARBOARD NACELLE CLOSED INDICATOR | 78 AIR BRAKE CONTROL LEVER |
| 31 STARBOARD NACELLE EMERGENCY CLOSE SWITCH | 79 POWER CONTROL FAILURE MASTER INDICATOR (post Mod. 1617 or 2006) |
| 32 MAIN UNDERCARRIAGE PORT AND STARBOARD 1ST LOCK INDICATOR LAMP | 80 AILERON TRIM TAB MASTER SWITCH |
| 33 UNDERCARRIAGE POSITION INDICATOR | 81 SERVICING LAMPS SWITCH AND INDICATOR LAMP |
| 34 FLIGHT INSTRUMENT MASTER SWITCH | 82 RUDDER FEEL UNIT HEATER SWITCH |
| 35 FLAP MAIN MOTOR TRIP SWITCH | 83 ELEVATOR FEEL UNIT HEATER SWITCH |
| 36 FLAP EMERGENCY MOTOR TRIP SWITCH | 84 AILERON FEEL UNIT HEATER SWITCH |
| 37 PORT MAIN UNDERCARRIAGE DOOR INDICATOR LAMP | 85 CABIN LAMPS SWITCH |
| 38 STARBOARD MAIN UNDERCARRIAGE DOOR INDICATOR LAMP | 86 POWER CONTROLS HEATERS SWITCH |
| 39 EXTERNAL LAMPS MASTER SWITCH | 87 FLAP EMERGENCY CONTACTOR TRIPPED LAMP AND RESET PUSH-SWITCH |
| 40 IDENTIFICATION LAMP MORSE/STEADY SWITCH | 88 ELEVATOR TRIM TAB MASTER SWITCH (pre-Mod. 1958, rudder post Mod.) |
| 41 NAVIGATION LAMP/ DIM/BRIGHT SWITCH | 89 RUDDER TRIM TAB MASTER SWITCH (pre-Mod. 1958, elevator post Mod.) |
| 42 NAVIGATION LAMPS FLASH/STEADY SWITCH (Mod. 2593) | 90 TRIMMING SWITCH TRIM TABS |
| 42A TAIL NAVIGATION LAMP ON/OFF SWITCH (Mod. 2638) | 91 IDENTIFICATION LAMP MORSE SWITCH, PORT ▶ |
| 43 STARBOARD HANDWHEEL TAILPLANE INCIDENCE SWITCH | |
| 44 IDENTIFICATION LAMP MORSE SWITCH STARBOARD | |
| 45 UNDERCARRIAGE—THROTTLE HORN TEST PUSH SWITCH | |
| 46 UNDERCARRIAGE EXTREME EMERGENCY DOWN SWITCH | |
| 47 HOOD JETTISON AND CONTROLS PARKING LEVER | |

RESTRICTED



D.3511. 370434. 11/63. S.W.Ltd.

Fig. 6 Equipment in cockpit
RESTRICTED.

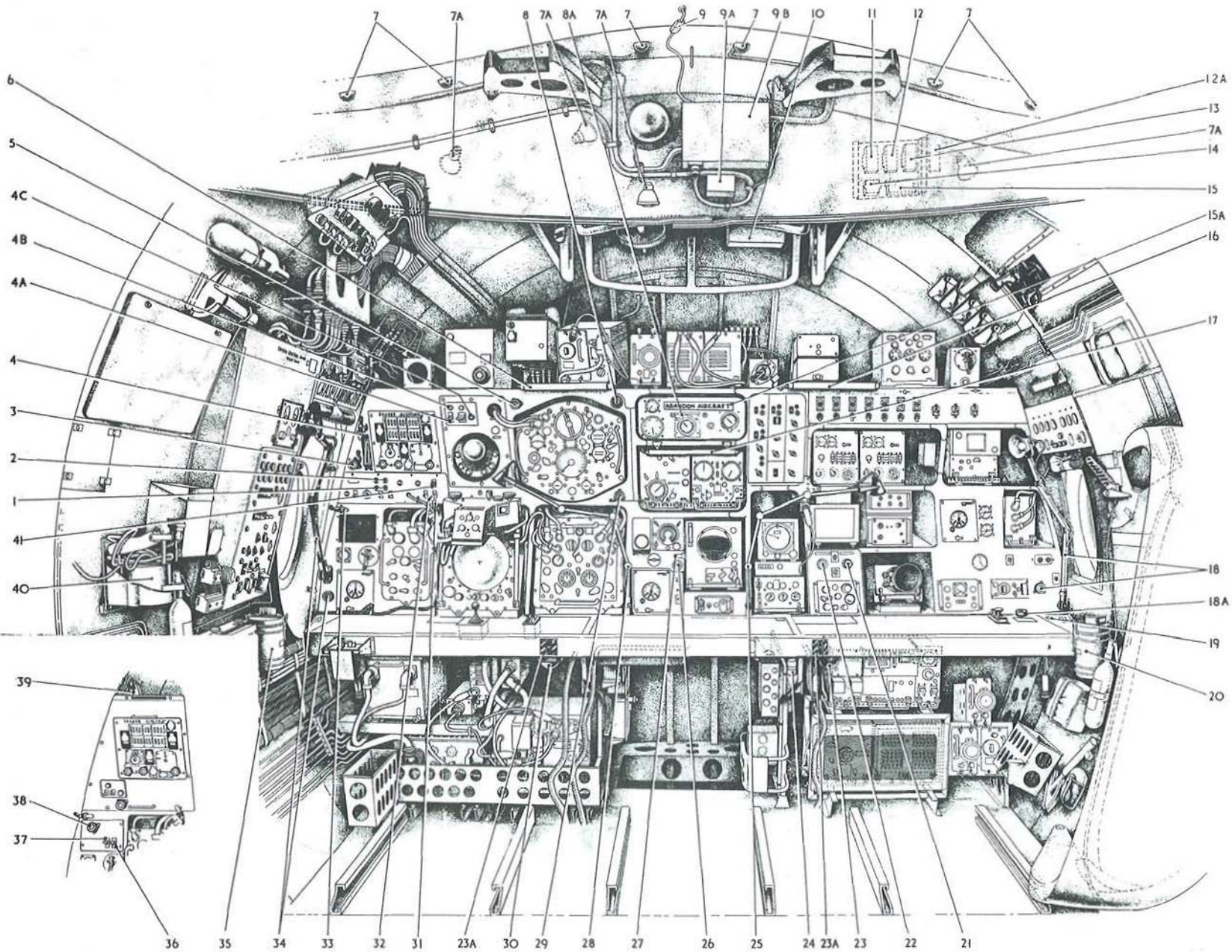


Fig. 7 Equipment at crew stations.

RESTRICTED

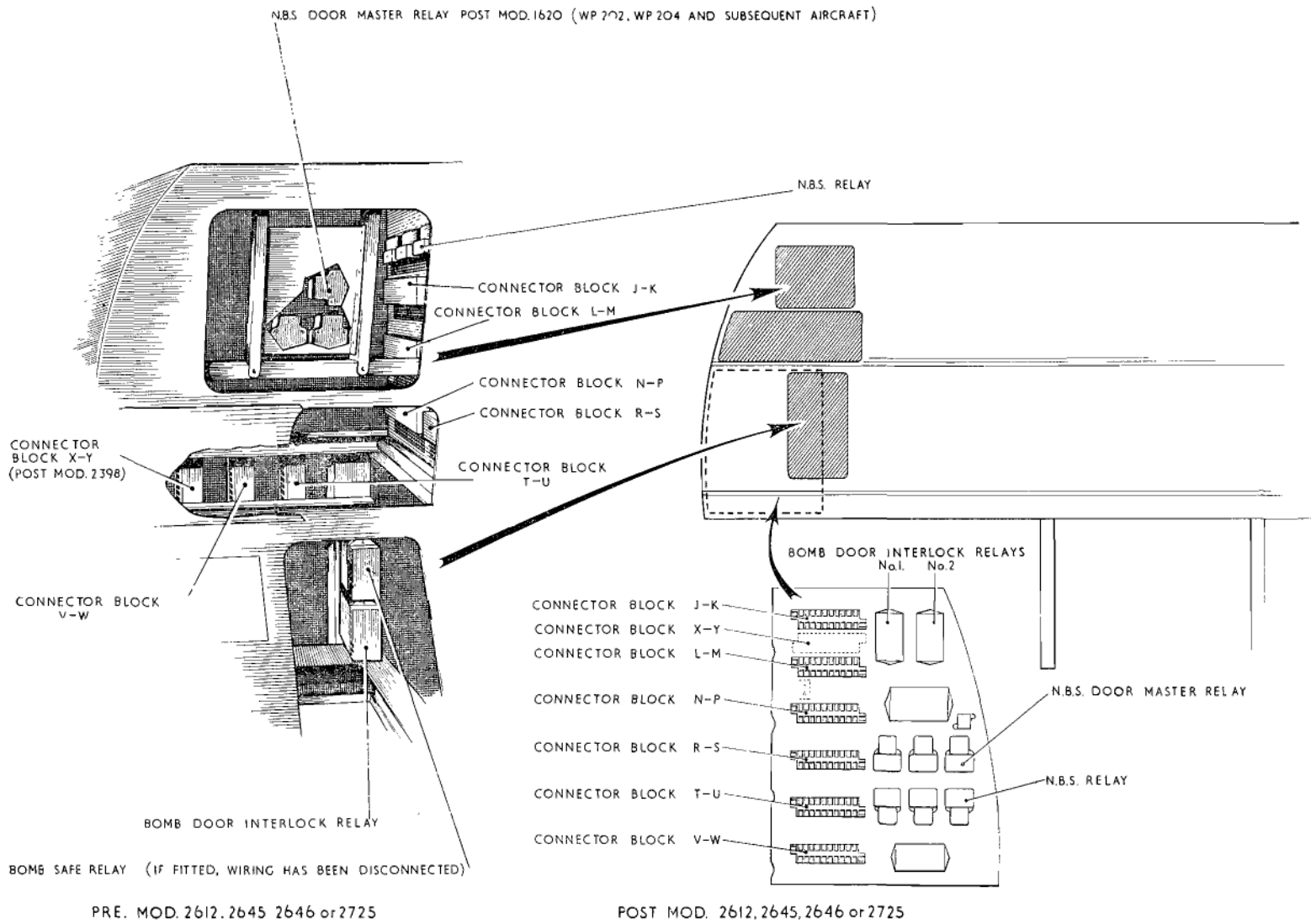


Fig. 8. Details of equipment in radio crate

RESTRICTED

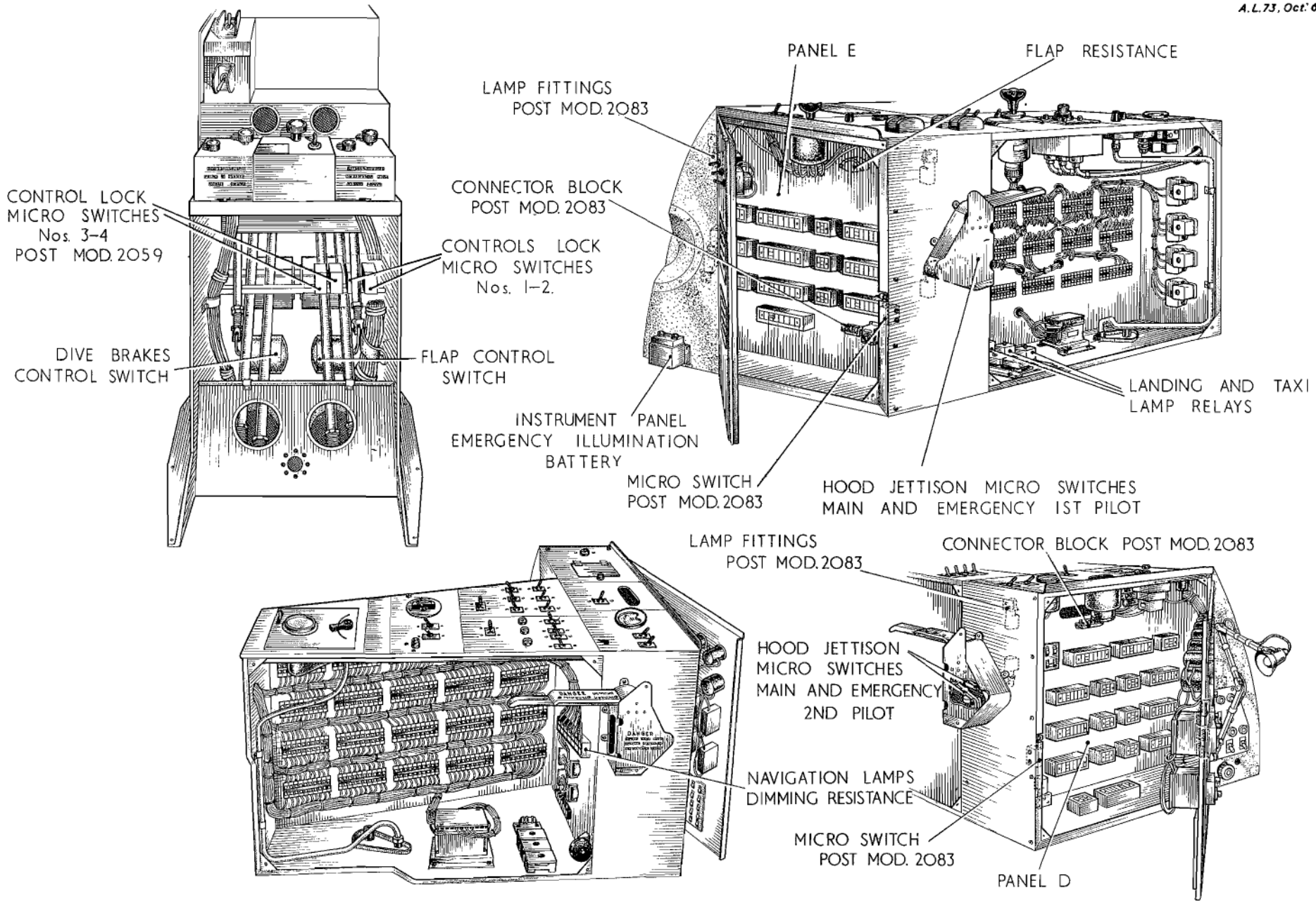


Fig. 9 Equipment in consoles and control pedestal

RESTRICTED

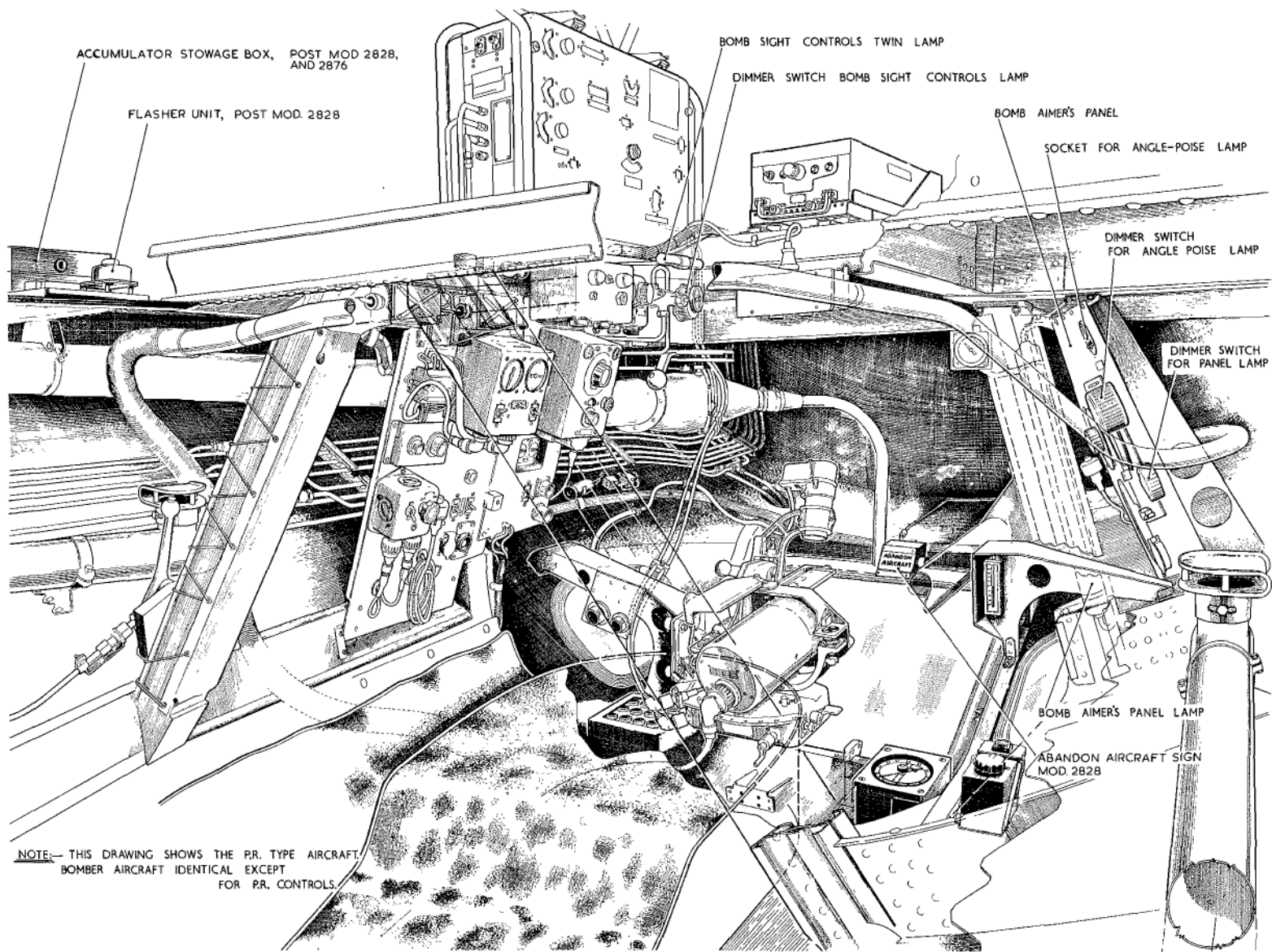


Fig. 10 Equipment at bomb aimer's position.

RESTRICTED

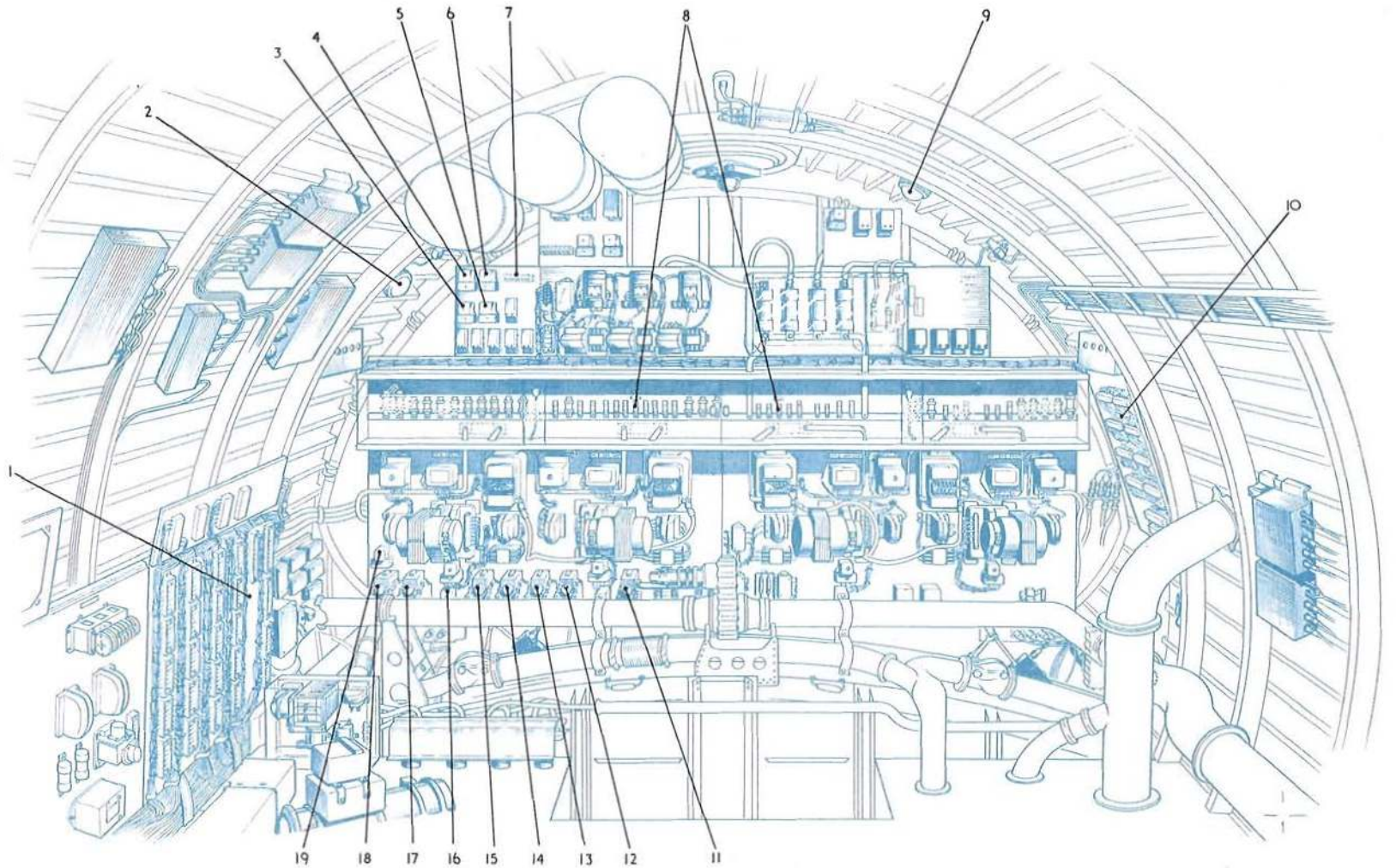


Fig. II Equipment on panel J
RESTRICTED

(A.L. 28, JAN '58)

Key to Fig. 11 (Equipment on panel J)

- 1** STARBOARD WING ROOT PANEL K
- 2** SERVICING LAMP
- 3** AILERON NO. 1
- 4** RUDDER/ELEVATOR NO. 1
- 5** AILERON NO. 2
- 6** RUDDER/ELEVATOR NO. 2
- 7** 5-WAY CONNECTOR BLOCK
- 8** UNDERWING NACELLE DOOR MOTOR A FUSES (SHOWN AS WHEN NACELLES ARE FITTED)
- 9** SERVICING LAMP
- 10** PORT WING ROOT PANEL P
- 11** NOSE UNDERCARRIAGE MAIN CONTACTOR (post Mod. 786)
- 12** RUDDER/ELEVATOR POWER UNIT NO. 2 CONTACTOR
- 13** RUDDER/ELEVATOR POWER UNIT NO. 1 CONTACTOR
- 14** AILERON POWER UNIT NO. 2 CONTACTOR
- 15** AILERON POWER UNIT NO. 1 CONTACTOR
- 16** { AILERON POWER UNIT TRIP RELAY (pre-Mod. 2089)
AILERON POWER UNIT TRIP RELAY NO. 1 (post Mod. 2089)
- 17** TAILPLANE INCIDENCE FINE CONTACTOR
- 18** TAILPLANE INCIDENCE COARSE CONTACTOR
- 19** AILERON POWER UNIT TRIP RELAY NO. 2 (post Mod. 2089 only)

} Power control failure master indicator relay (post Mod. 1617 or 2006)

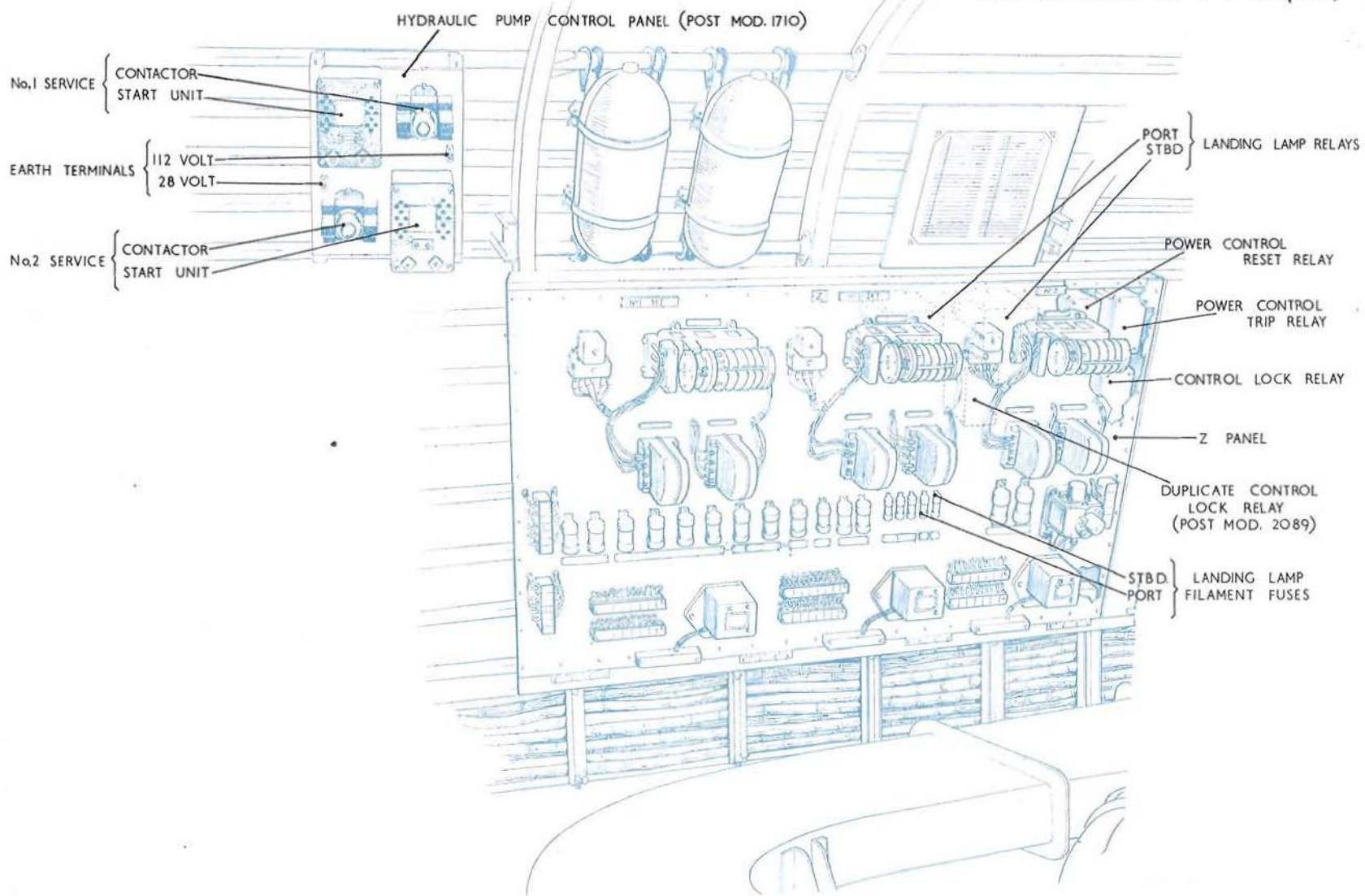


Fig. 12 Equipment on panel Z.
RESTRICTED

(A.L. 28, JAN '58.)

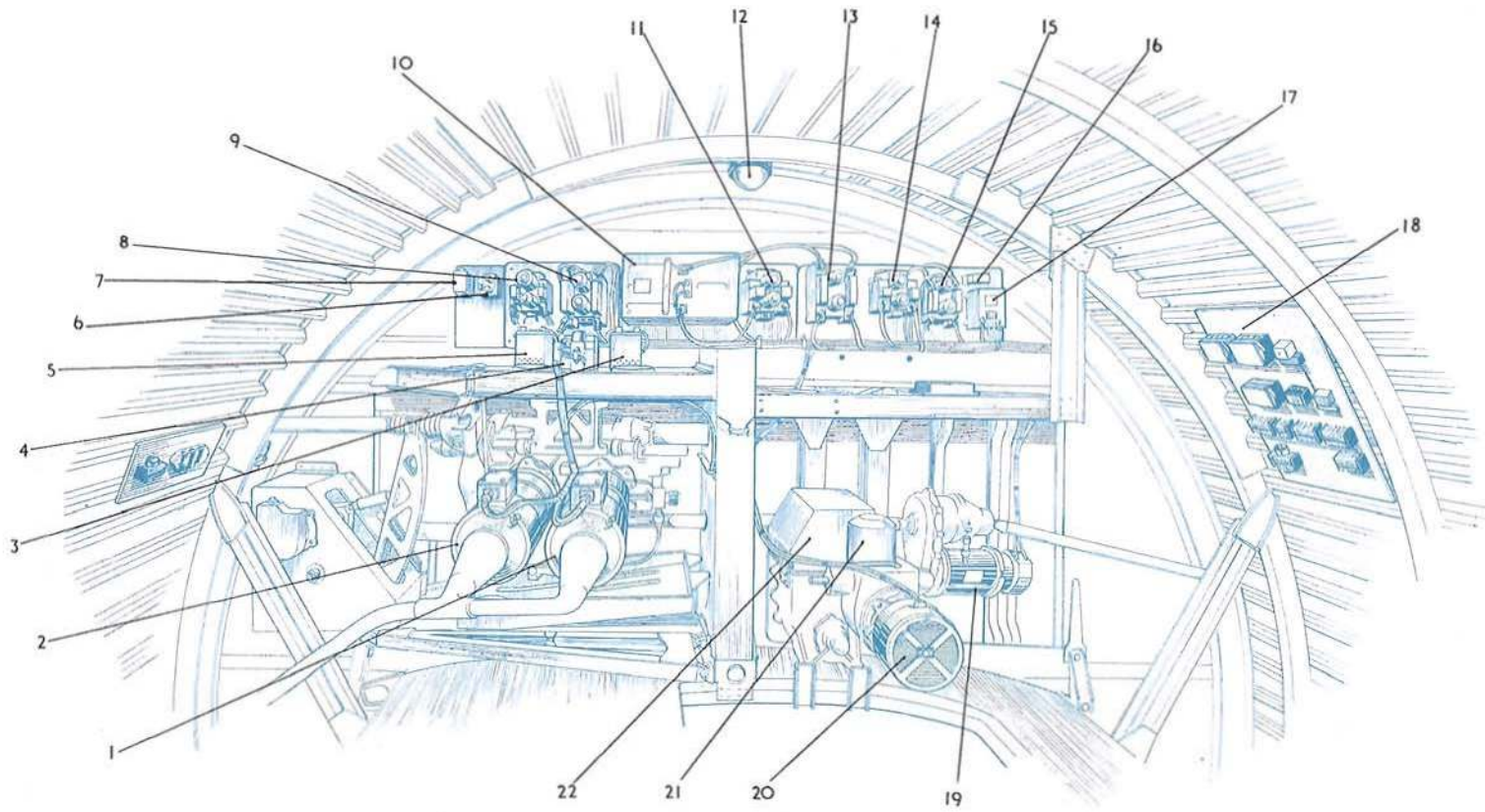


Fig.13. Equipment near rear spar
RESTRICTED

Key to Fig. 13 (Equipment near rear spar)

- 1 AILERON POWER UNIT MOTOR NO. 1
- 2 AILERON POWER UNIT MOTOR NO. 2
- 3 AILERON POWER UNIT MOTOR NO. 2 STARTER UNIT
- 4 AILERON POWER UNIT HEATER CONTACTOR (pre-Mod. 1626 only)
- 5 AILERON POWER UNIT MOTOR NO. 1 STARTER UNIT
- 6 FLAP MOTOR SHUNT FIELD RELAY (post Mod. 577)
- 7 FLAP REVERSAL INTERLOCK RELAY (post Mod. 577)
- 8 FLAP EMERGENCY MOTOR CONTACTOR
- 9 FLAP EMERGENCY MOTOR REVERSING RELAY
- 10 FLAP MAIN MOTOR STARTER UNIT
- 11 FLAP MAIN MOTOR CONTACTOR
- 12 SERVICING LAMP
- 13 FLAP MAIN MOTOR REVERSING RELAY
- 14 AIR BRAKE MOTOR CONTACTOR
- 15 AIR BRAKE MOTOR REVERSING RELAY
- 16 AIR BRAKE PROTECTION RELAY
- 17 AIR BRAKE MOTOR STARTER UNIT
- 18 PANEL V
- 19 AIR BRAKE MOTOR
- 20 FLAP MAIN MOTOR (EMERGENCY MOTOR IS BEHIND THE GEARBOX)
- 21 AIR BRAKE MOTOR BRAKE SOLENOID
- 22 FLAP MOTOR MICRO SWITCHES (UNDER GEARBOX COVER)

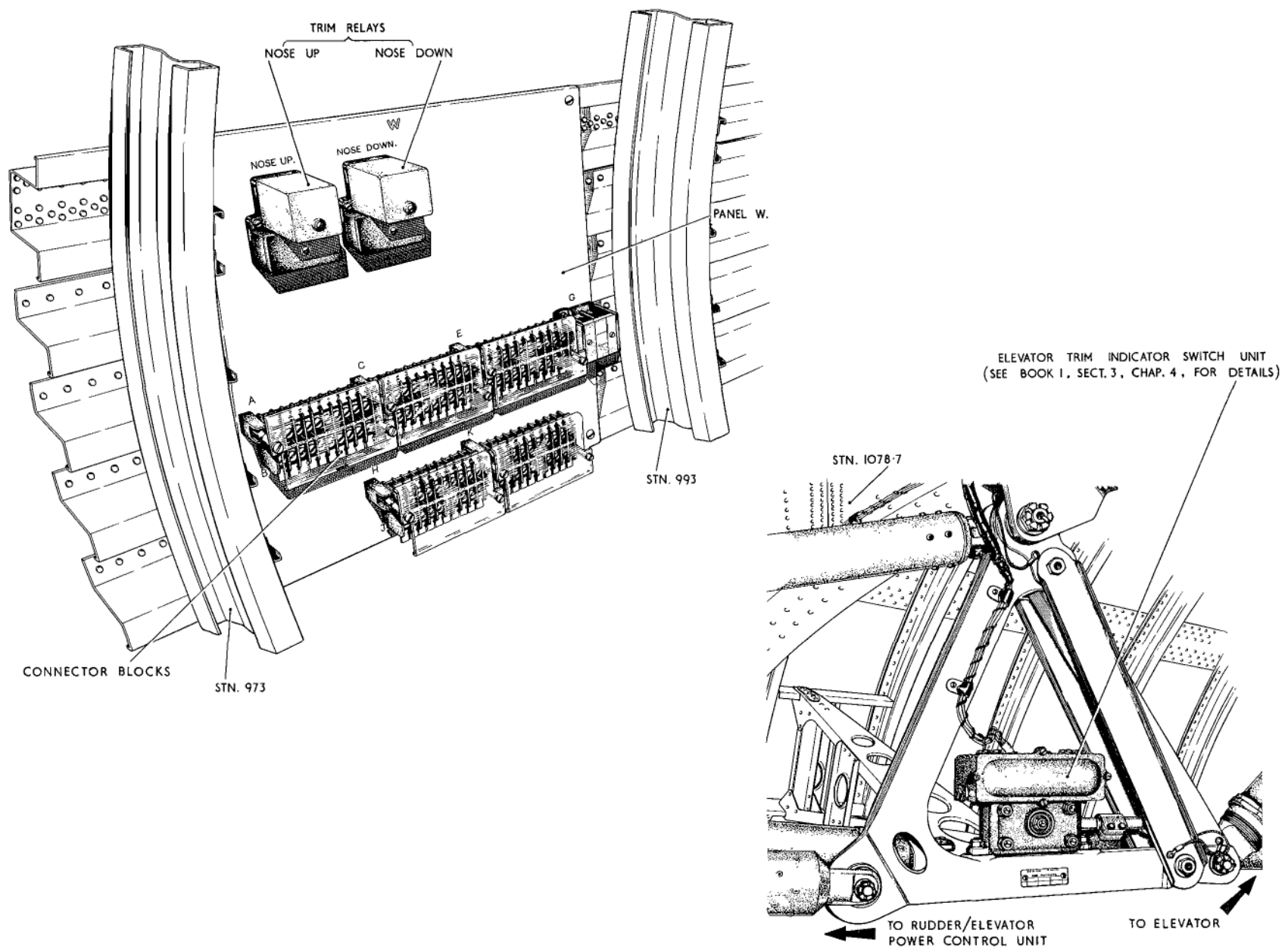


Fig. 14. Elevator out of trim equipment
RESTRICTED

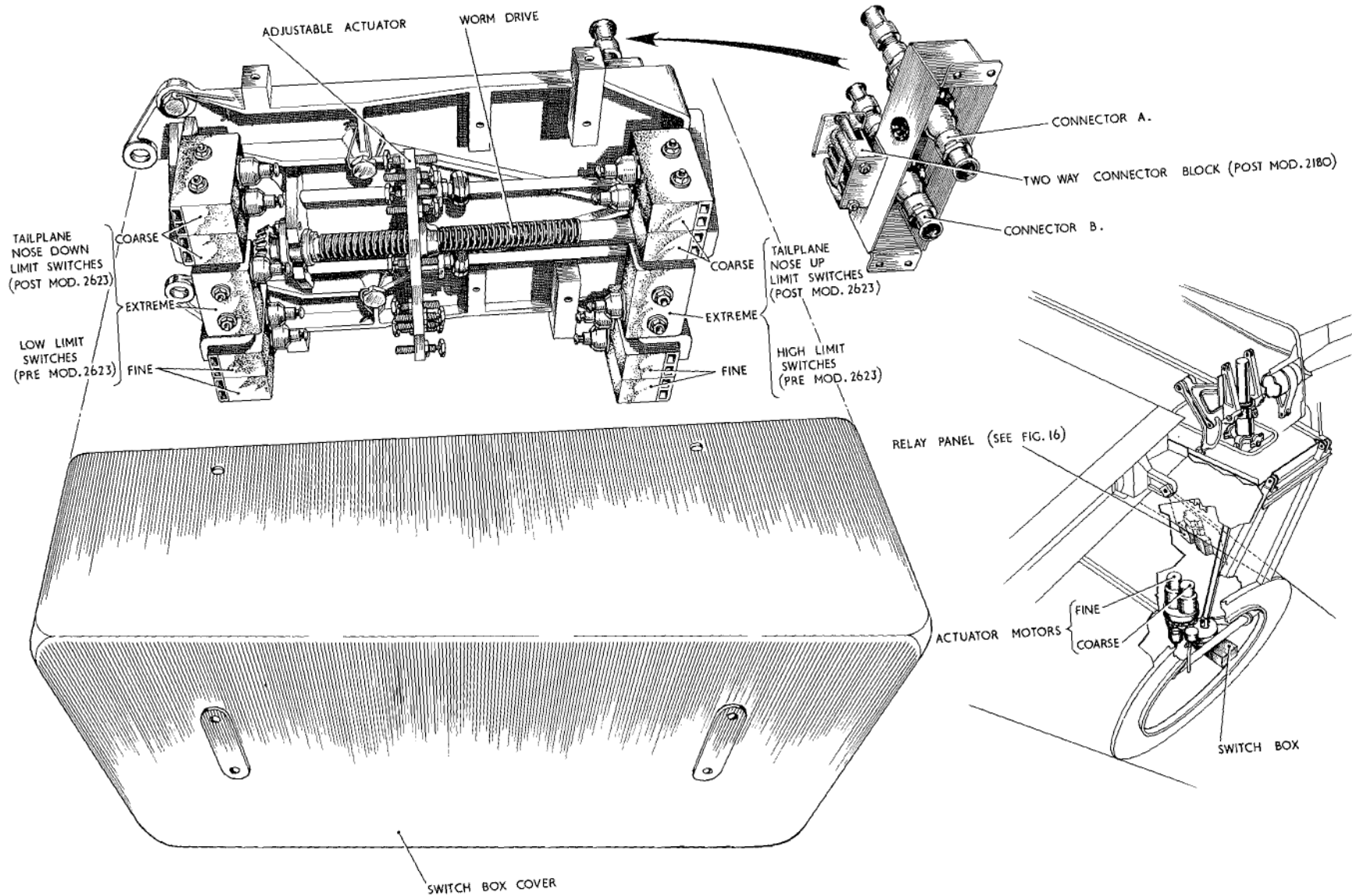


Fig. 15. Tailplane incidence control equipment.

A. L. 47. Apr. 60.

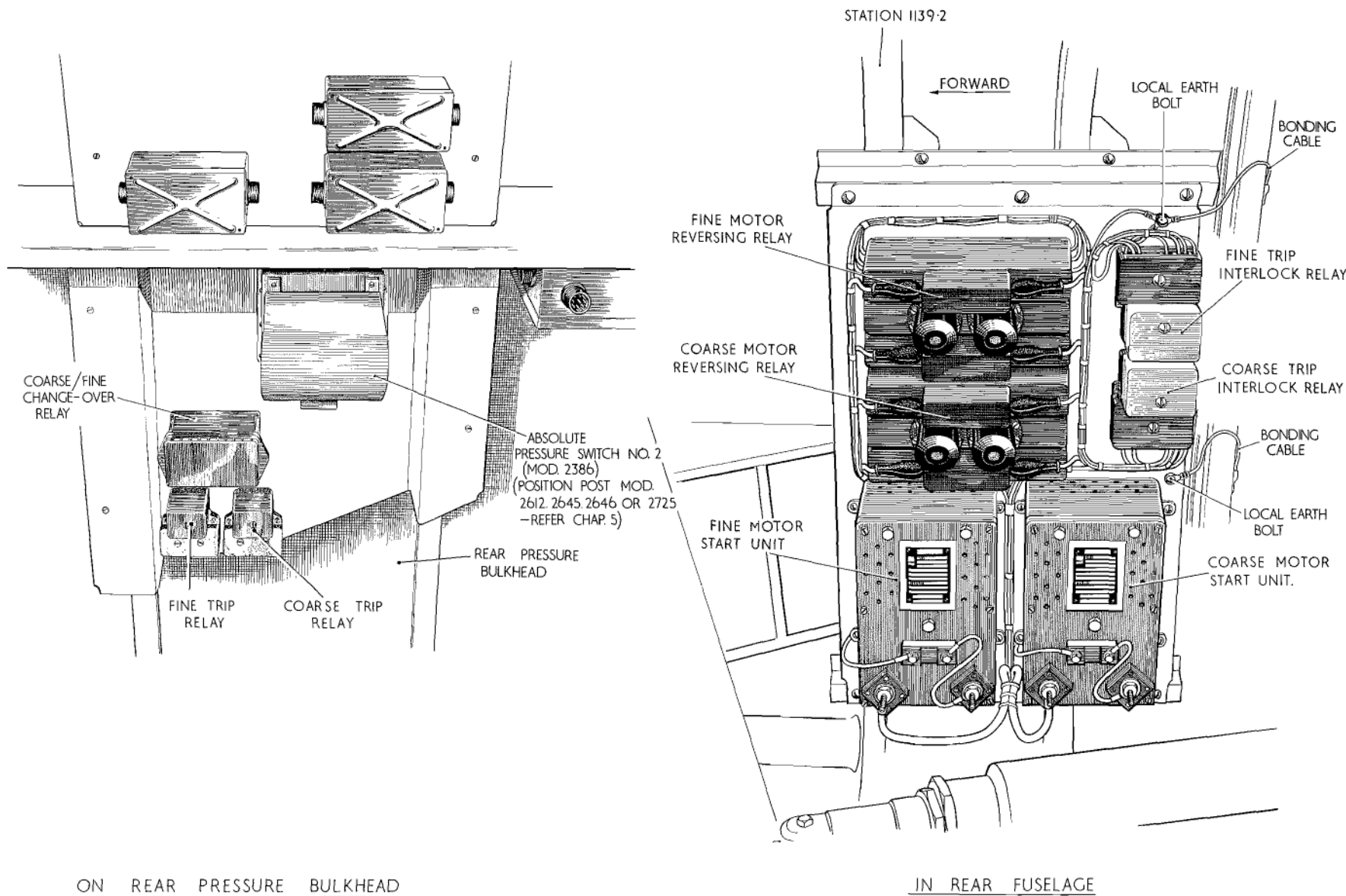


Fig.16 Tailplane incidence control panels

RESTRICTED

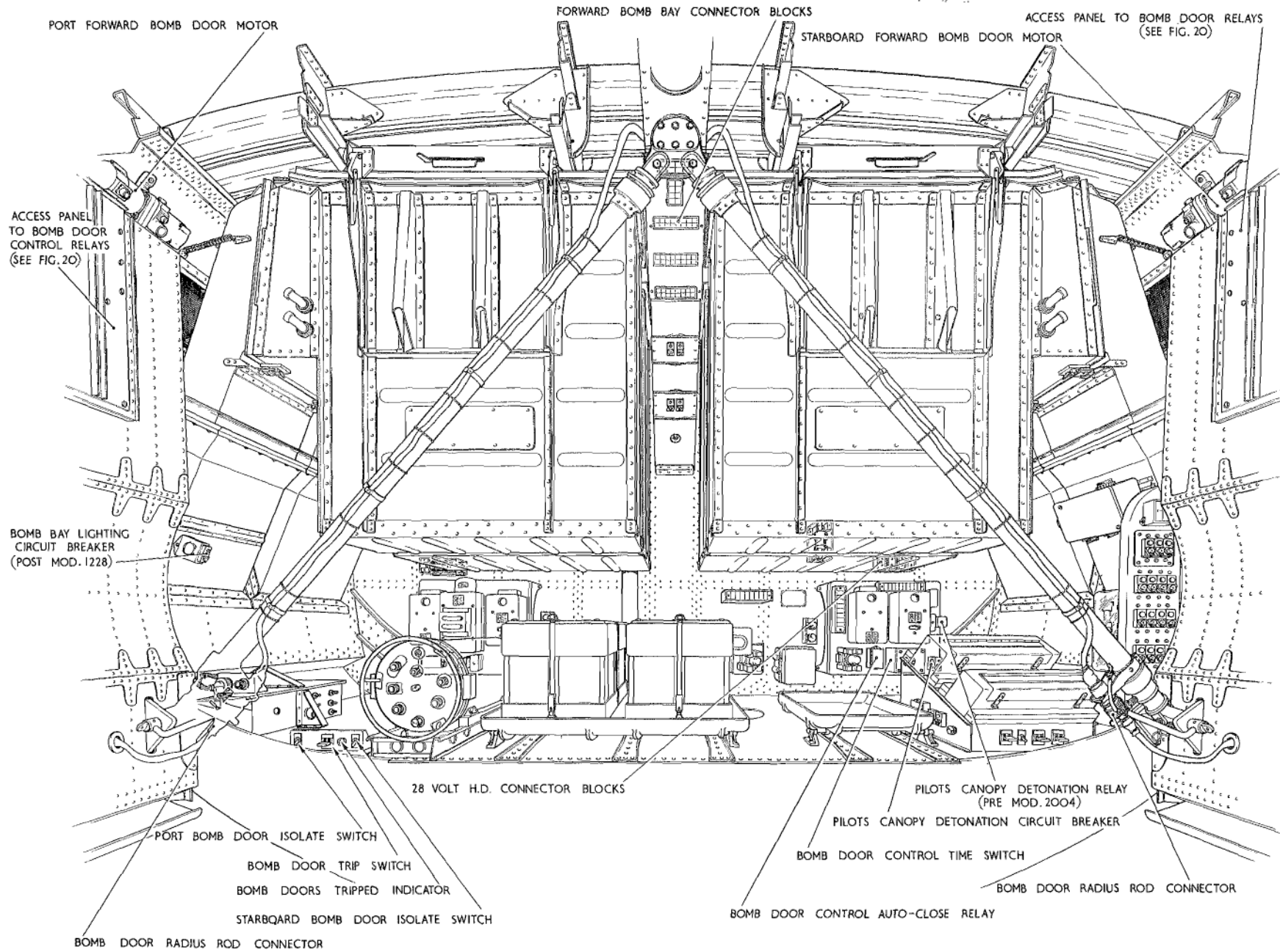


Fig. 17 Equipment in battery bay.

RESTRICTED

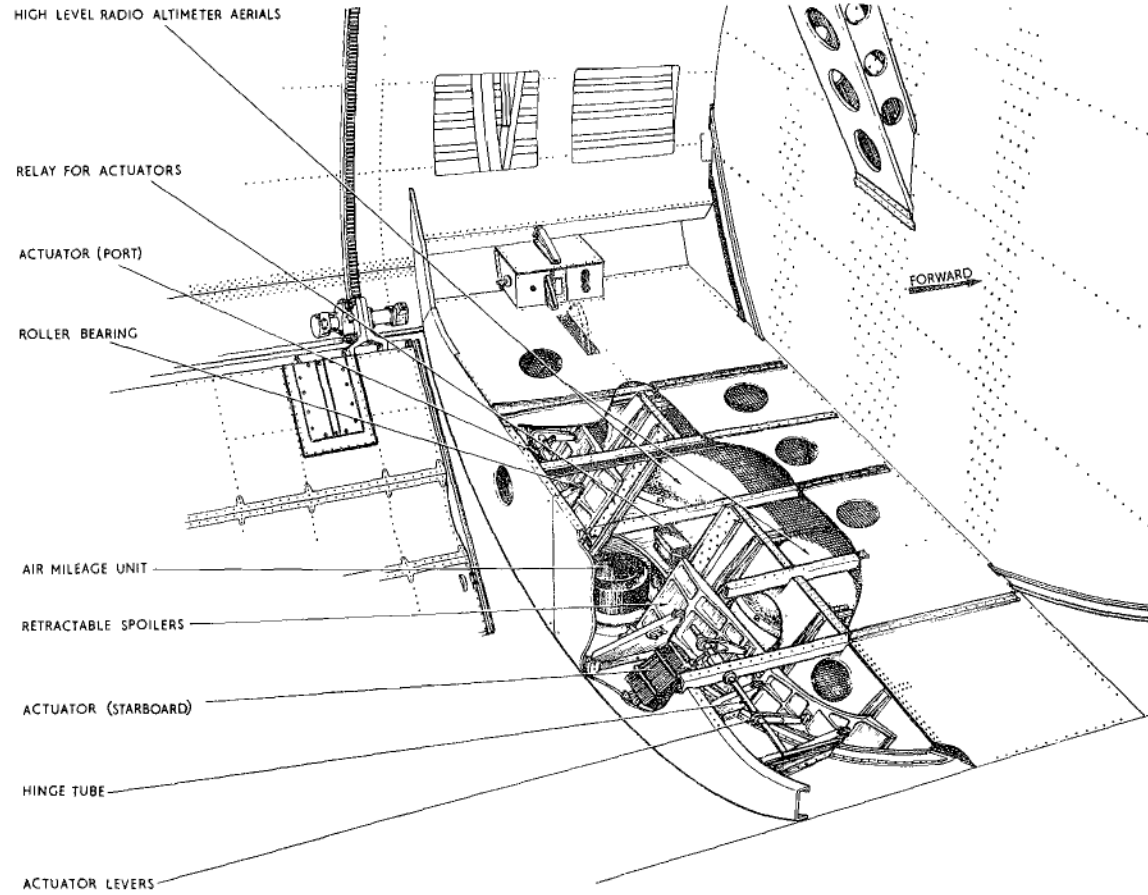


Fig.18 Air spoiler compartment

RESTRICTED

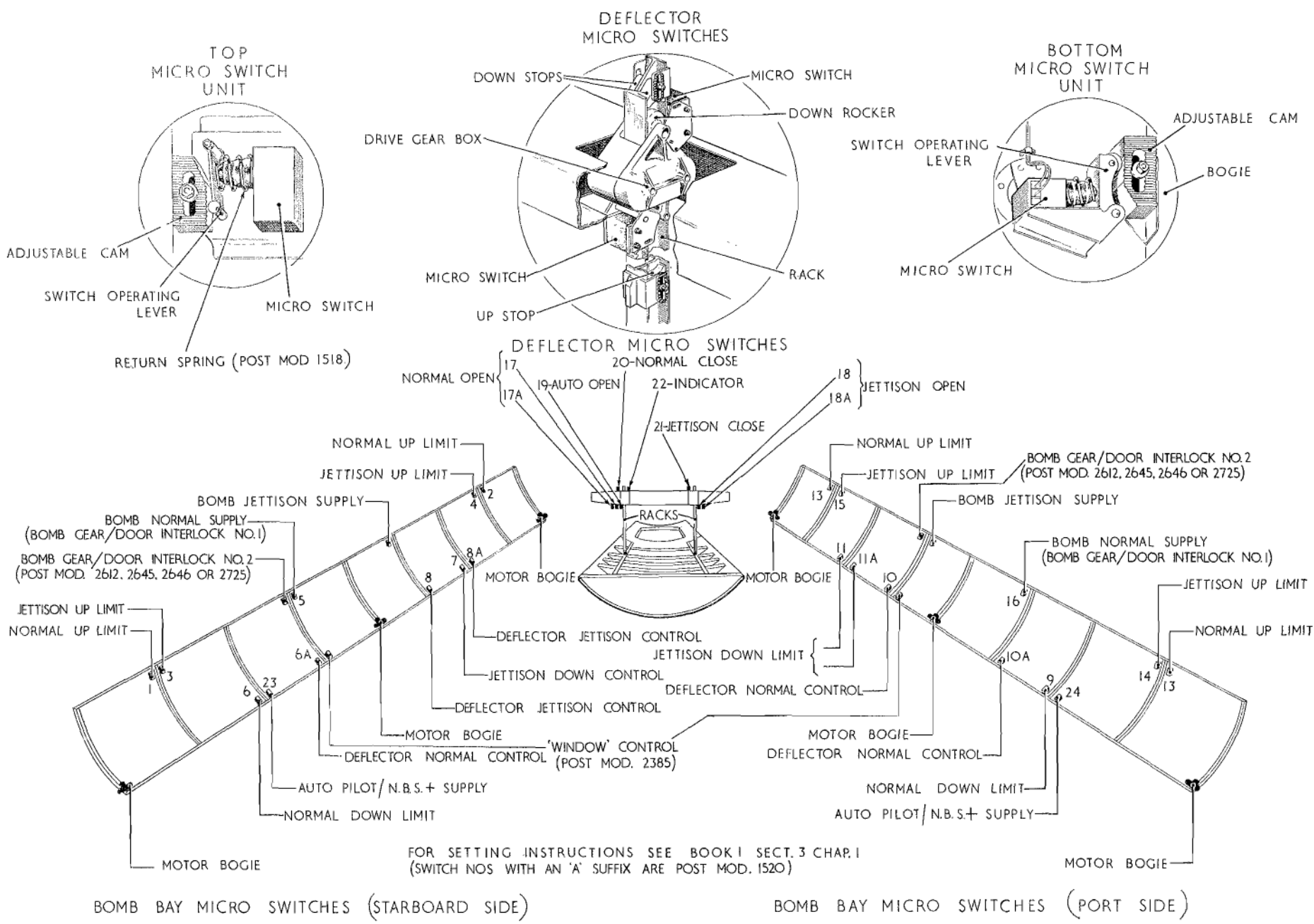


Fig.19 Bomb bay micro switches.
RESTRICTED

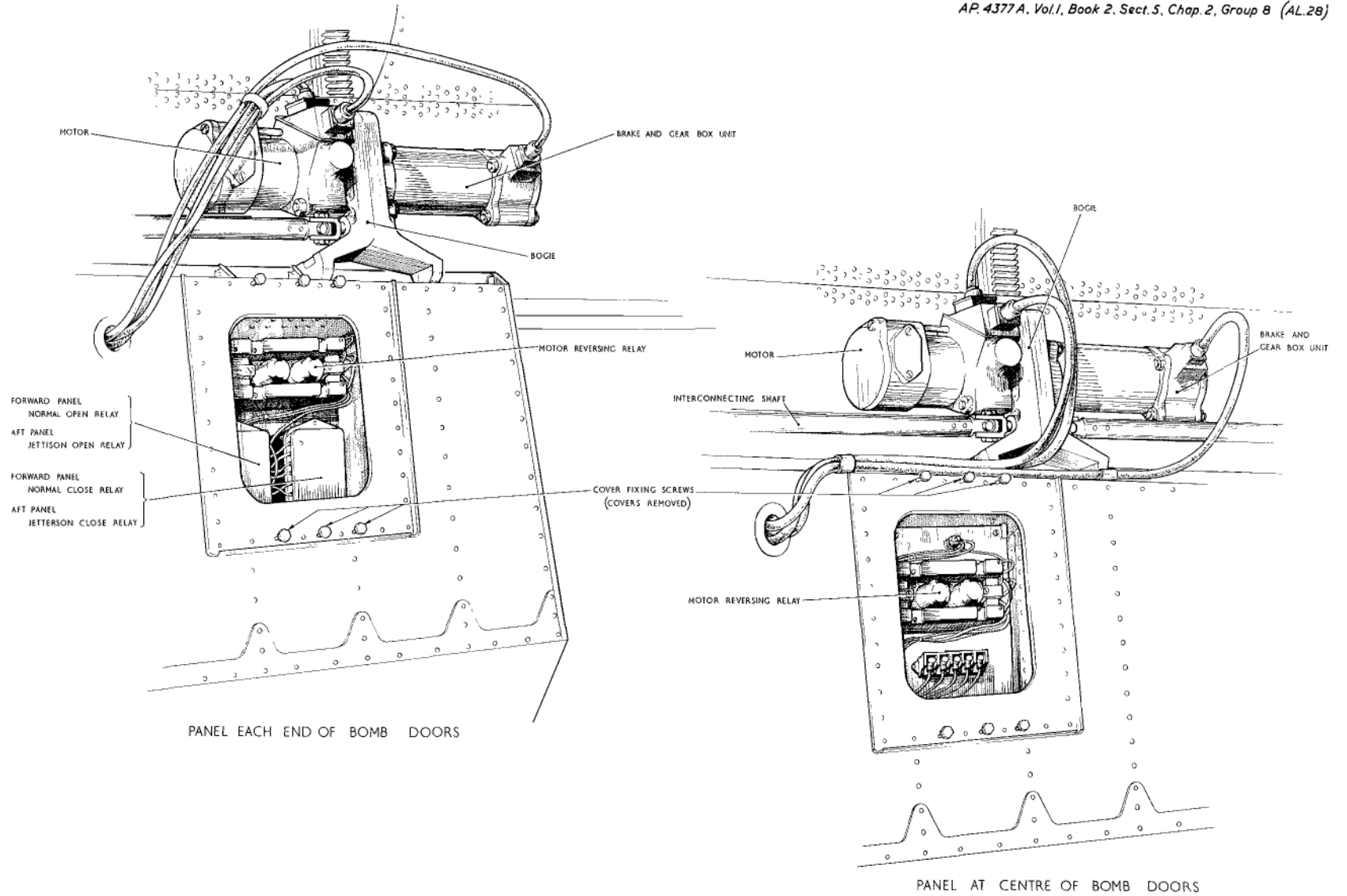


Fig. 20. Bomb door control panels (B.Mk.I)

RESTRICTED

(A.L. 28, JAN '58.)

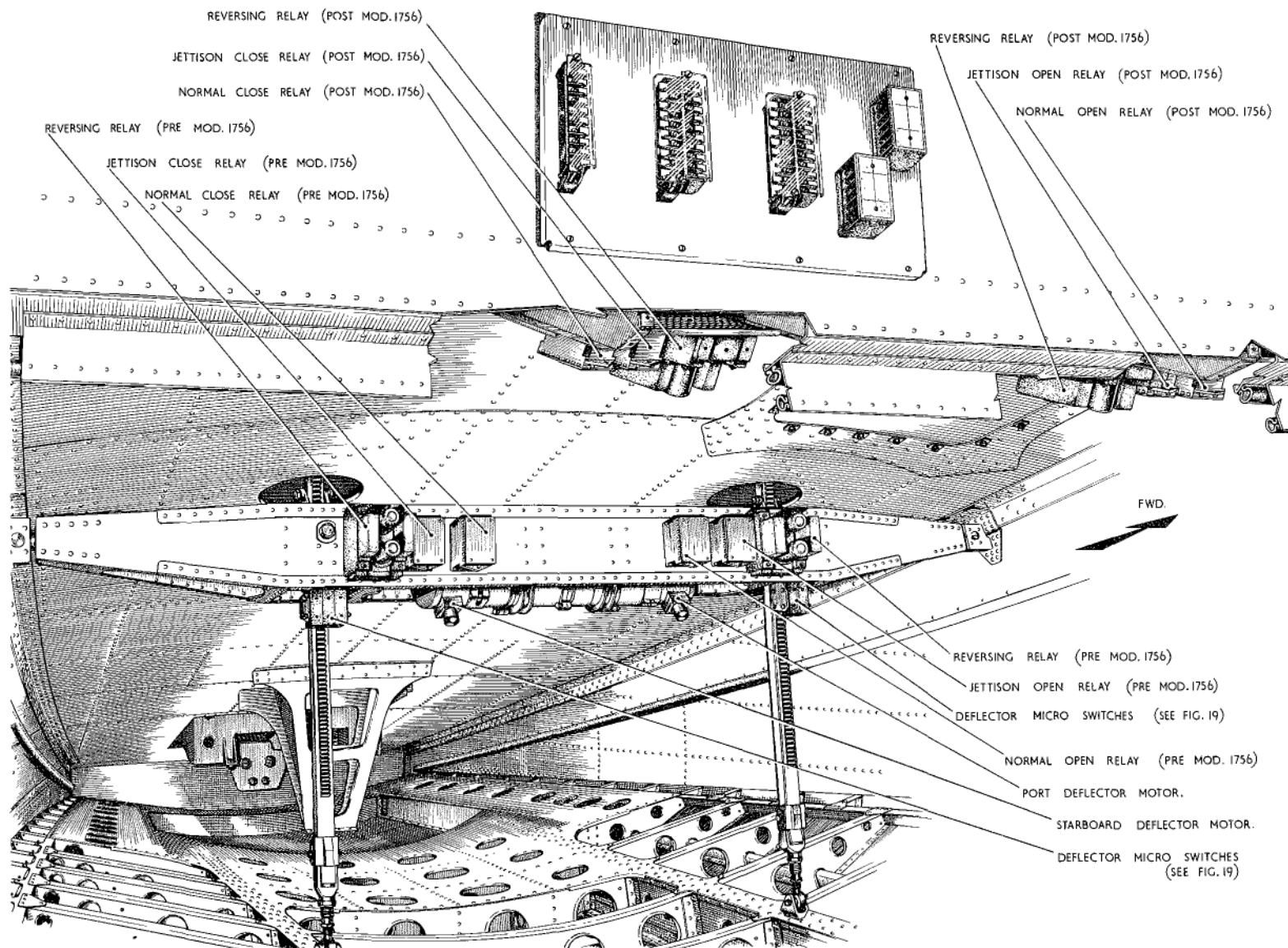


Fig. 21 Deflector control equipment.

RESTRICTED

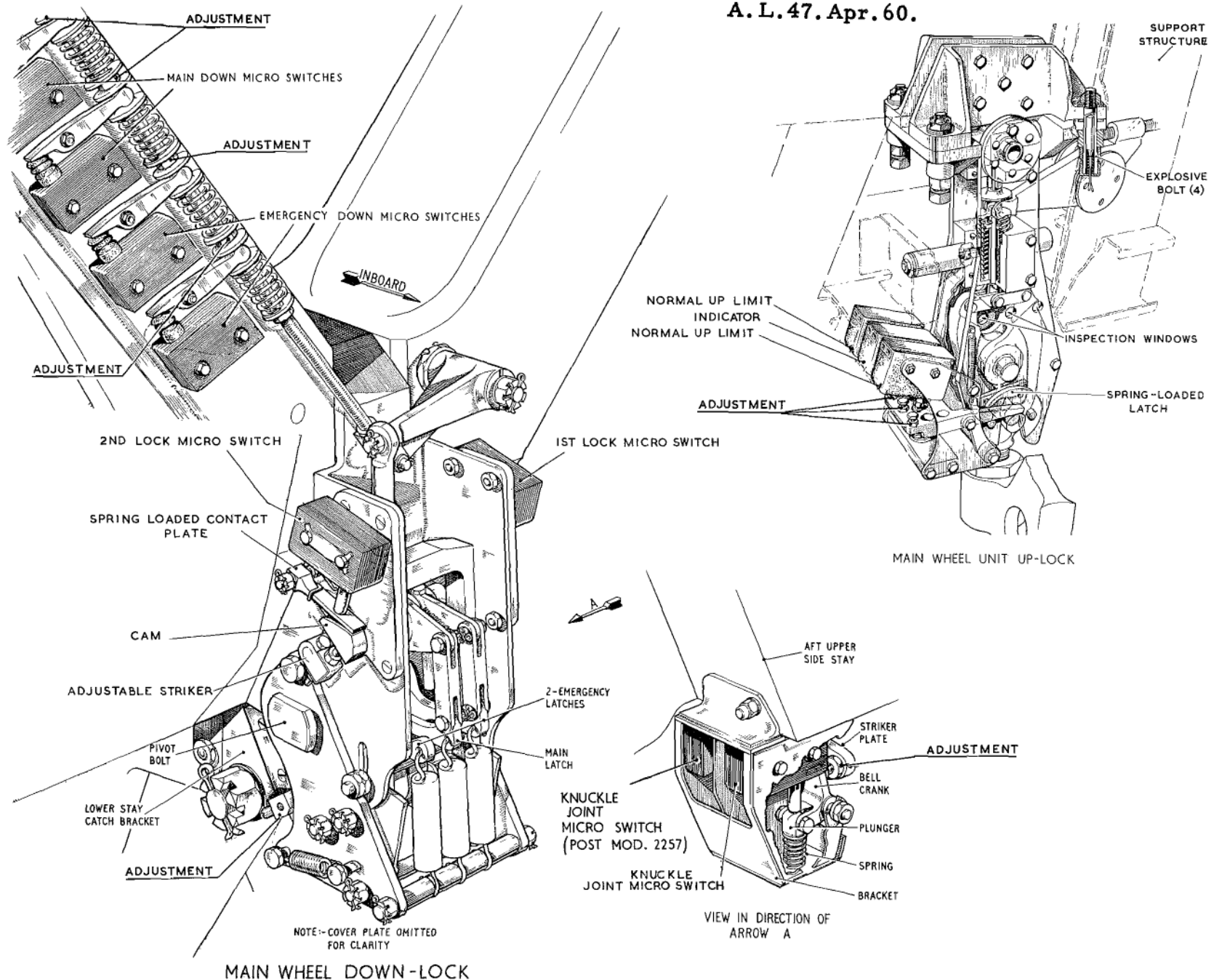


FIG. 22 Main wheel micro switches
RESTRICTED

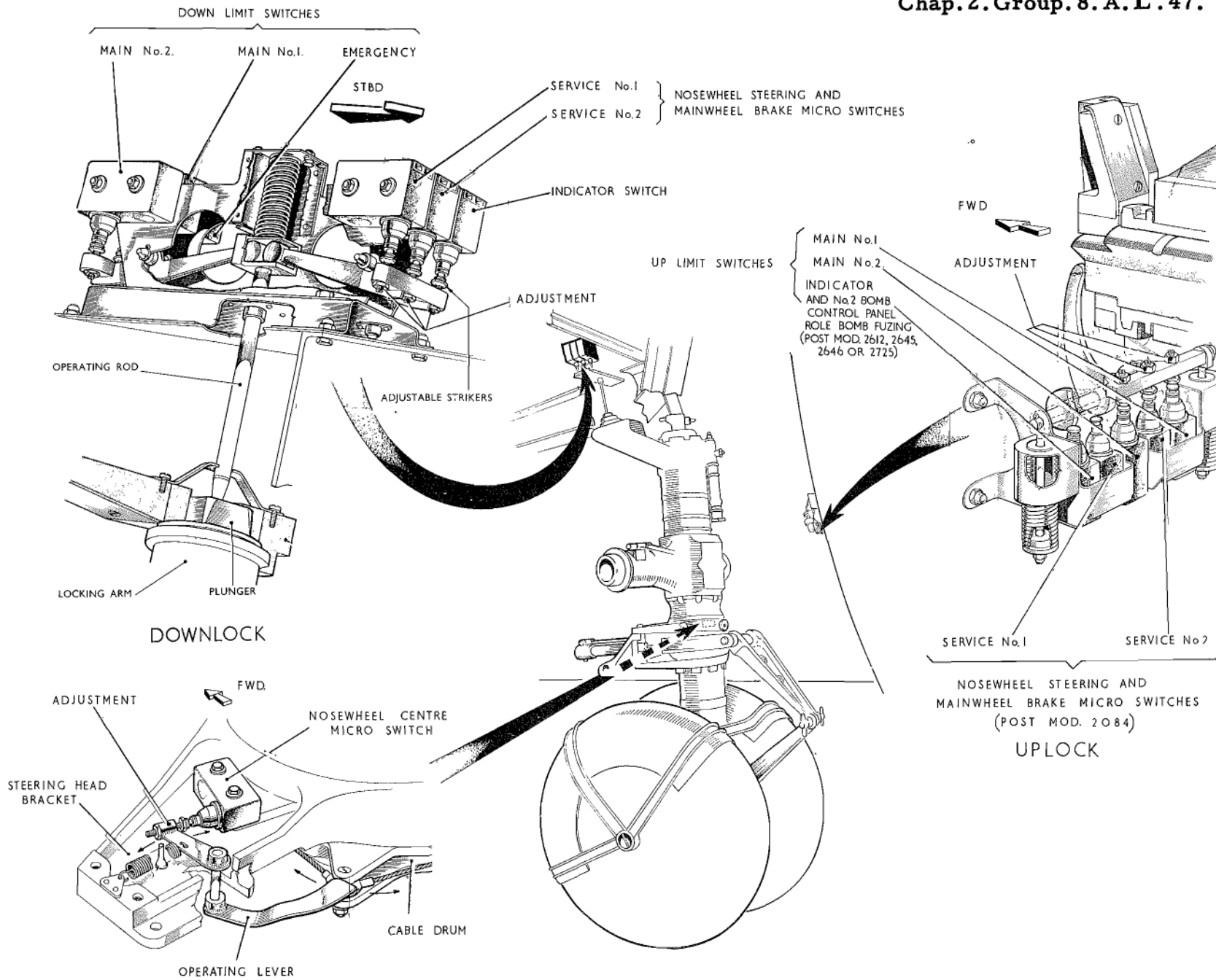


Fig. 23 Nosewheel undercarriage micro switches.
 RESTRICTED

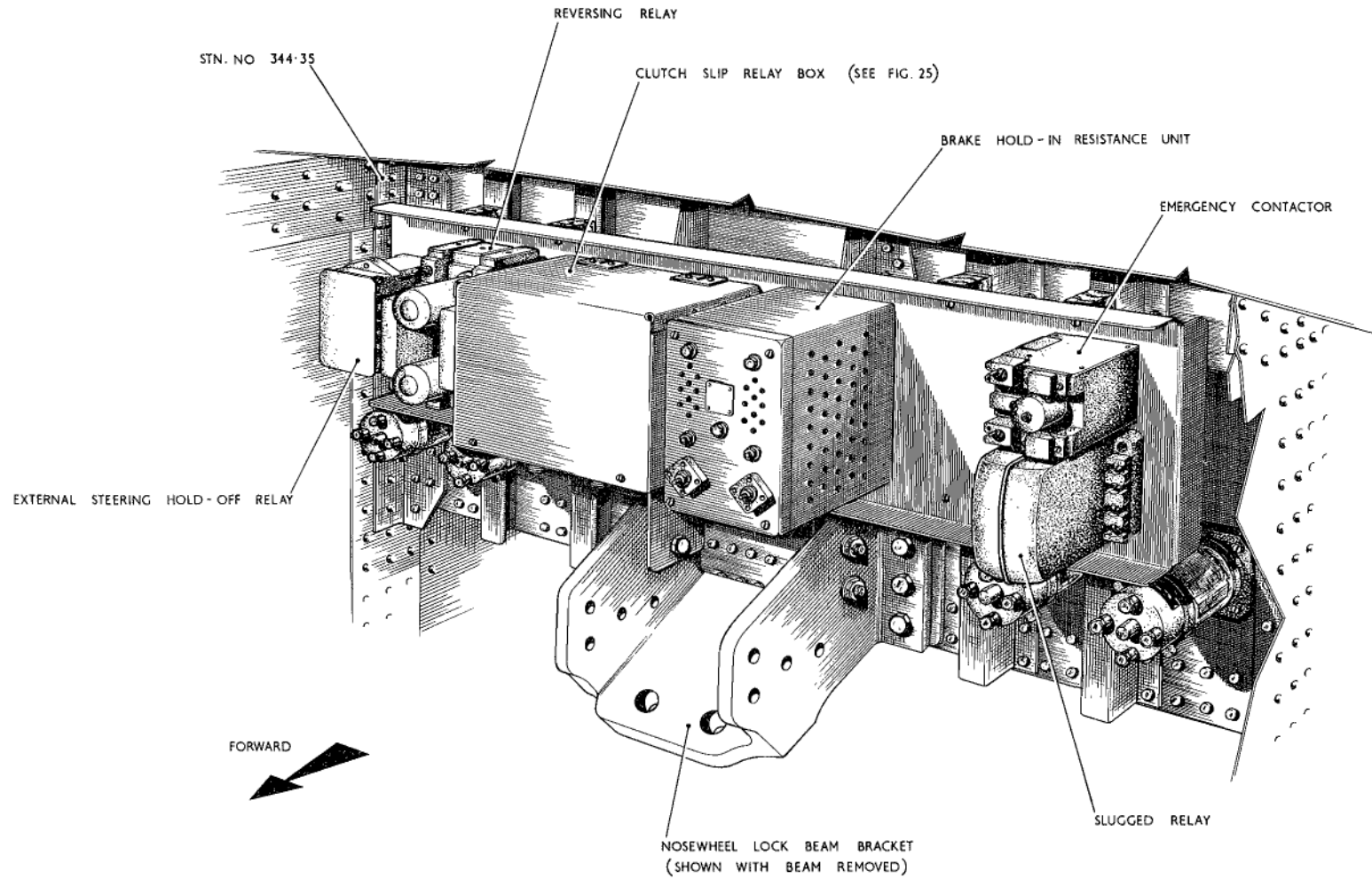


Fig. 24 Nose undercarriage relay panel.

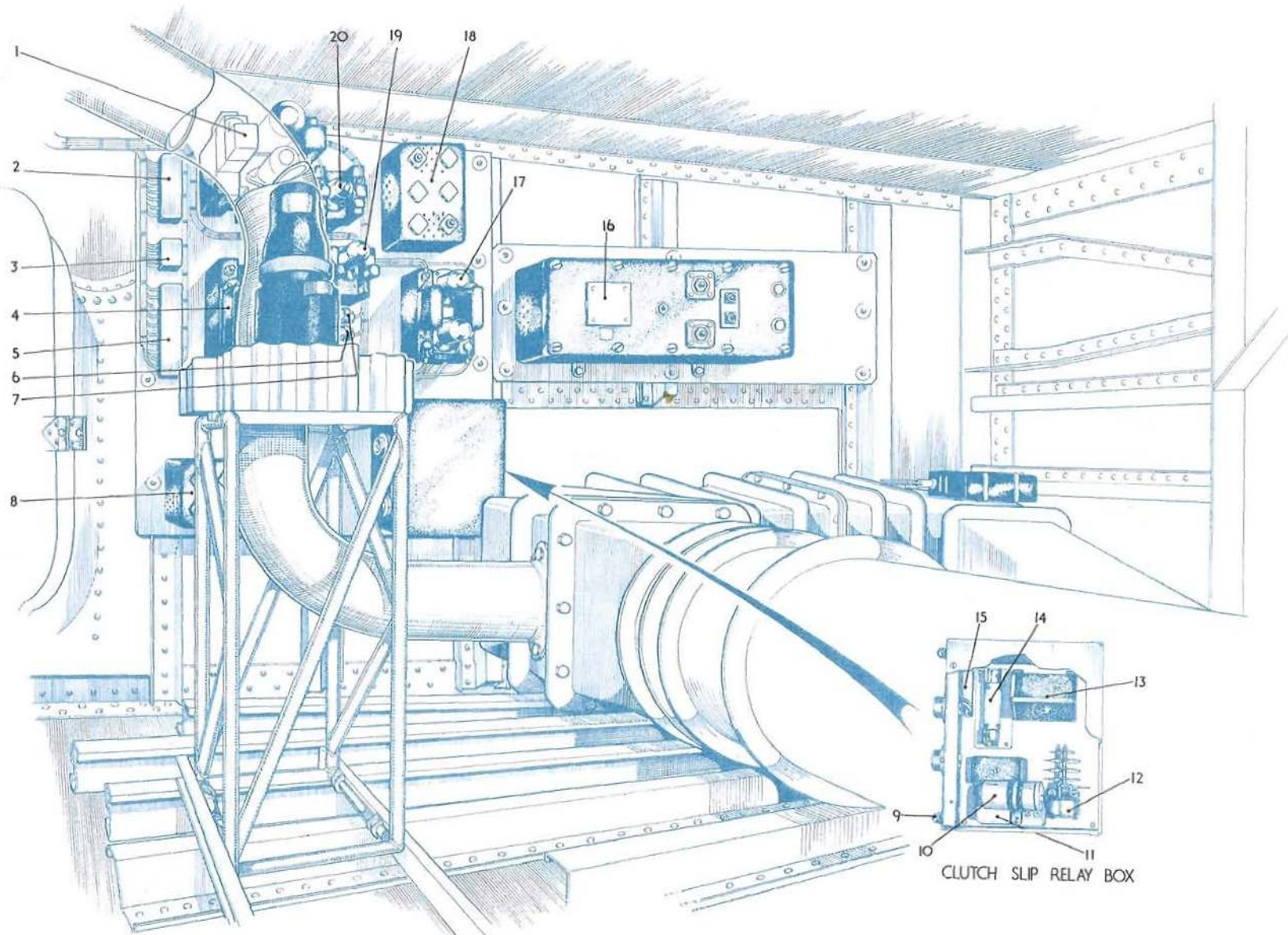


Fig. 25 Main undercarriage relay panel
RESTRICTED

Key to Fig. 25 (Main undercarriage relay panel)

- 1 CONTACTOR FOR UNDERCARRIAGE AND DOOR NORMAL MOTORS
- 2 20-WAY CONNECTOR BLOCK
- 3 5-WAY CONNECTOR BLOCK
- 4 UNDERCARRIAGE REVERSING RELAY--NORMAL
- 5 20-WAY CONNECTOR BLOCK
- 6 DOOR SUPPLY FUSE, EMERGENCY, 40 AMP.
- 7 DOOR SUPPLY FUSE, NORMAL, 60 AMP.
- 8 UNDERCARRIAGE EMERGENCY MOTOR BRAKE HOLD-IN RESISTANCE
- 9 CLUTCH SLIP RELAY BOX EARTH BOLT
- 10 CAPACITOR (0.5mf) (post Mod. 2017)
- 11 CLUTCH SLIP RESETTING RELAY
- 12 CLUTCH SLIP ROTARY RELAY
- 13 CLUTCH SLIP RELAY
- 14 CLUTCH SLIP RELAY VOLTAGE DROPPING RESISTANCE (440 ohms)
- 15 SERIES RESISTANCE (0-30 ohm, set to 22 ohms) (post Mod. 2017)
- 16 UNDERCARRIAGE NORMAL START RESISTANCE AND BRAKE HOLD-IN RESISTANCE UNIT
- 17 DOOR REVERSING RELAY, NORMAL
- 18 DOOR NORMAL BRAKE HOLD-IN RESISTANCE
- 19 UNDERCARRIAGE EMERGENCY RELAY
- 20 DOOR EMERGENCY RELAY

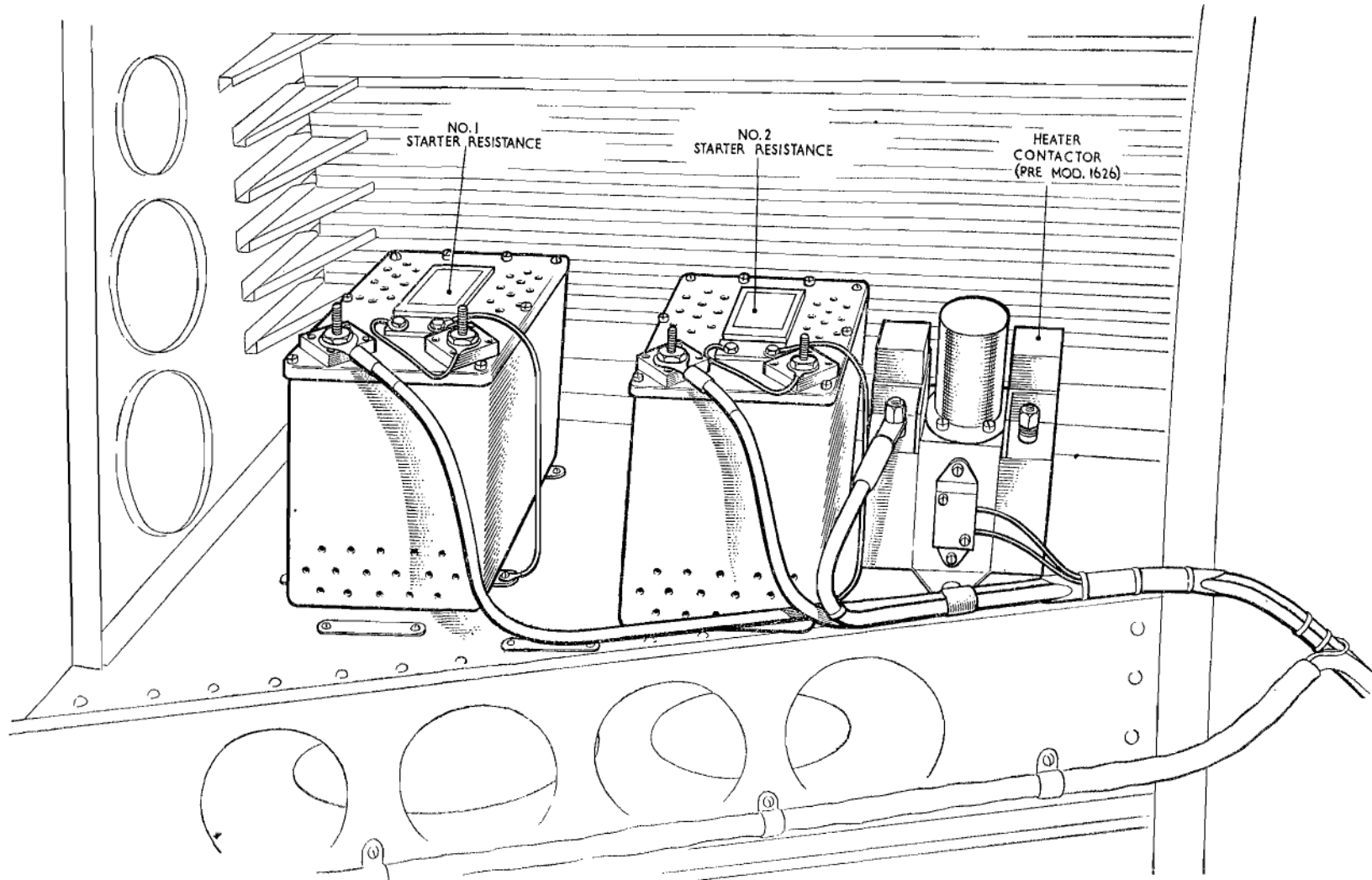


Fig. 26. Rudder/elevator power control unit panel



This file was downloaded
from the RTFM Library.

Link: www.scottbouch.com/rtfm

Please see site for usage terms,
and more aircraft documents.