

Group 6

LOCATION DIAGRAMS

LIST OF ILLUSTRATIONS

	Fig.		Fig.		Fig.
<i>Location of equipment</i>	1	<i>Equipment near panel J</i>	10	<i>R.A.T.O.G. installation</i>	22
<i>Location of equipment in bomb bay</i> ...	2	<i>Equipment at bomb aimer's position</i> ...	11	◀ <i>Equipment at crew stations (post Mod. 2612, 2645, 2646 or 2725) (Mod. 2385)</i>	23▶
<i>Equipment in wing stalk</i>	3	<i>Access panels</i>	12	<i>Details of equipment in radio crate (post Mod. 2612, 2645, 2646 or 2725)</i> ...	24
<i>Equipment in cockpit (pre-Mod. 2330 or 2331)</i>	4	<i>Bomb loads</i>	13	<i>No. 1 control panel (Mod. 2609)</i> ...	25
<i>Equipment in cockpit (post Mod. 2330 or 2331)</i>	5	<i>21-1,000 lb bomb installation</i>	14	◀ <i>No. 2B control panel (Mod. 3173)</i> ...	26
◀ <i>Equipment at crew stations (pre-Mod. 2612, 2645, 2646 or 2725) (post Mod. 2385)</i>	6▶	<i>10-2,000 lb. mine installation</i>	15	<i>No. 3A control panel (Mod. 3174)</i> ...	27▶
<i>Details of equipment in radio crate (pre-Mod. 2612, 2645, 2646 or 2725)</i> ...	7	<i>1-10,000 lb. H.C. bomb installation</i> ...	16	<i>Equipment near rear spar (post Mod. 2612, 2645, 2646 or 2725)</i>	28
<i>Equipment near rear spar (pre-Mod. 2612, 2645, 2646 or 2725)</i>	8	<i>2-5,000 lb. bomb installation</i>	17	<i>Heavy store release connections at bomb station 3...</i>	29
<i>Equipment in battery compartment</i> ...	9	<i>Bomb hoist in position</i>	18		
		<i>Bomb hoist in operation</i>	19		
		<i>Stores in aircraft</i>	20		
		<i>10,000 lb. M.C. alternative store equipment</i>	21		

RESTRICTED

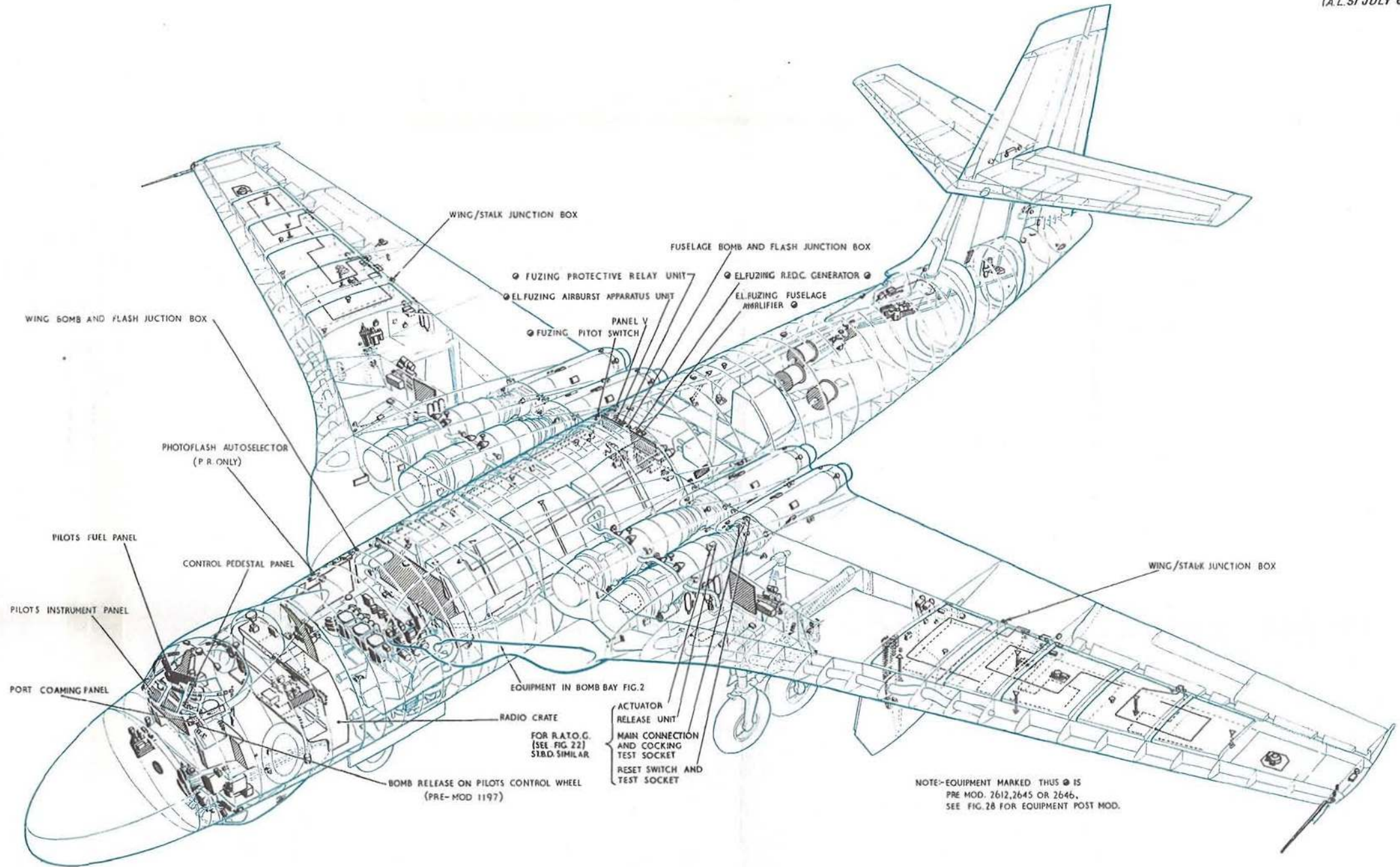


Fig. 1. Location of equipment
RESTRICTED

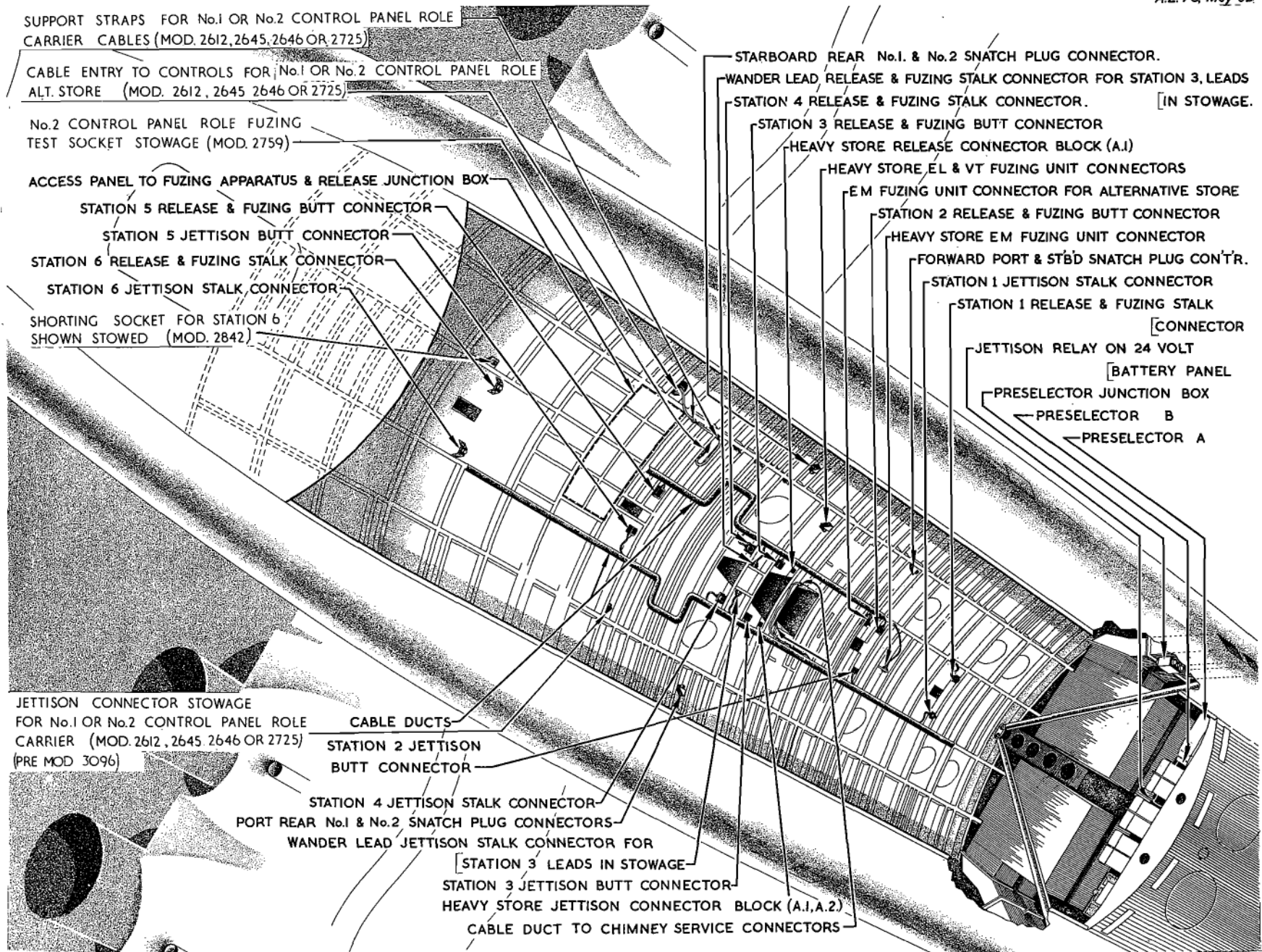


Fig. 2. Location of equipment in bomb bay
RESTRICTED

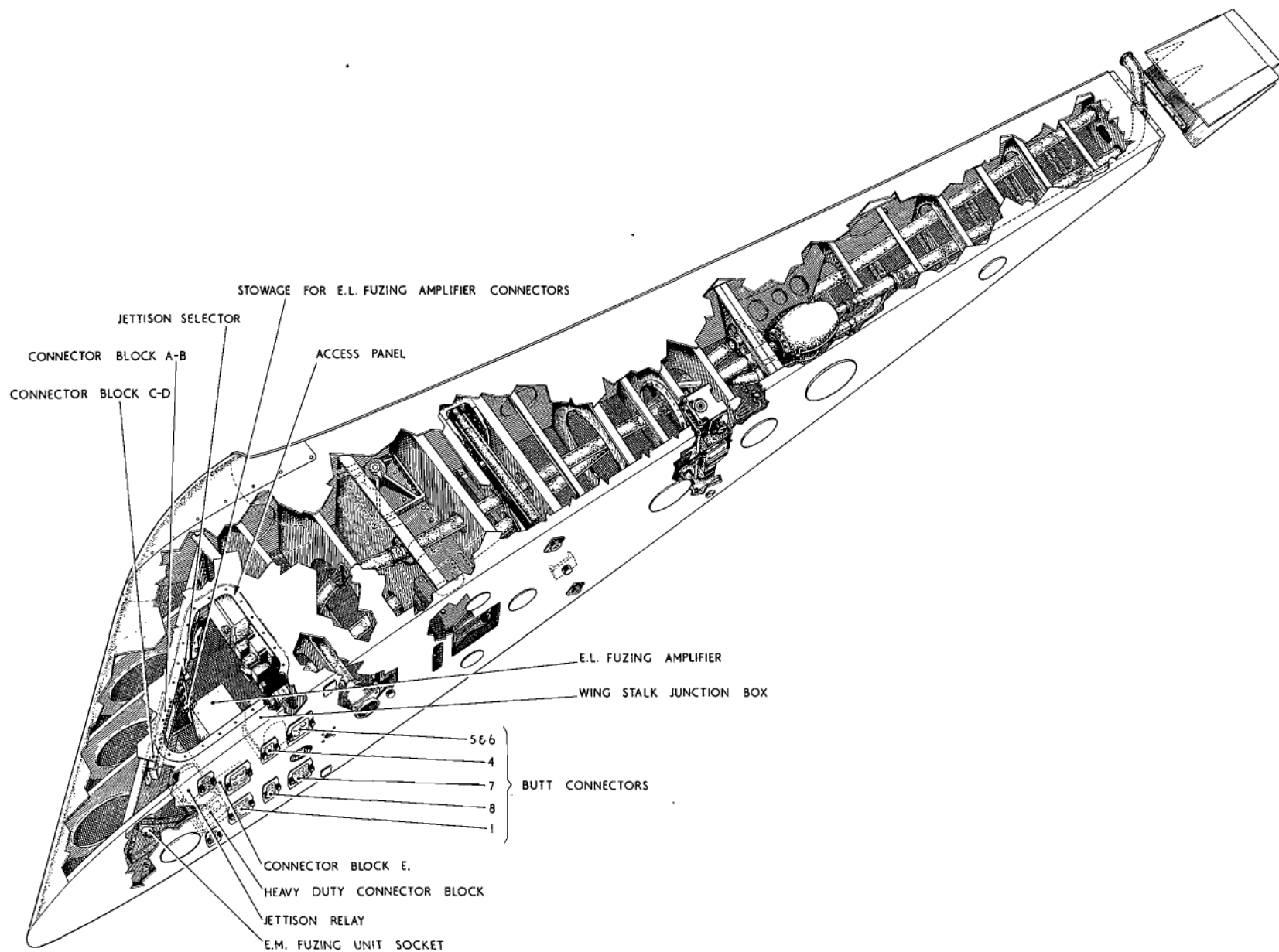


Fig.3. Equipment in wing stalk.

RESTRICTED

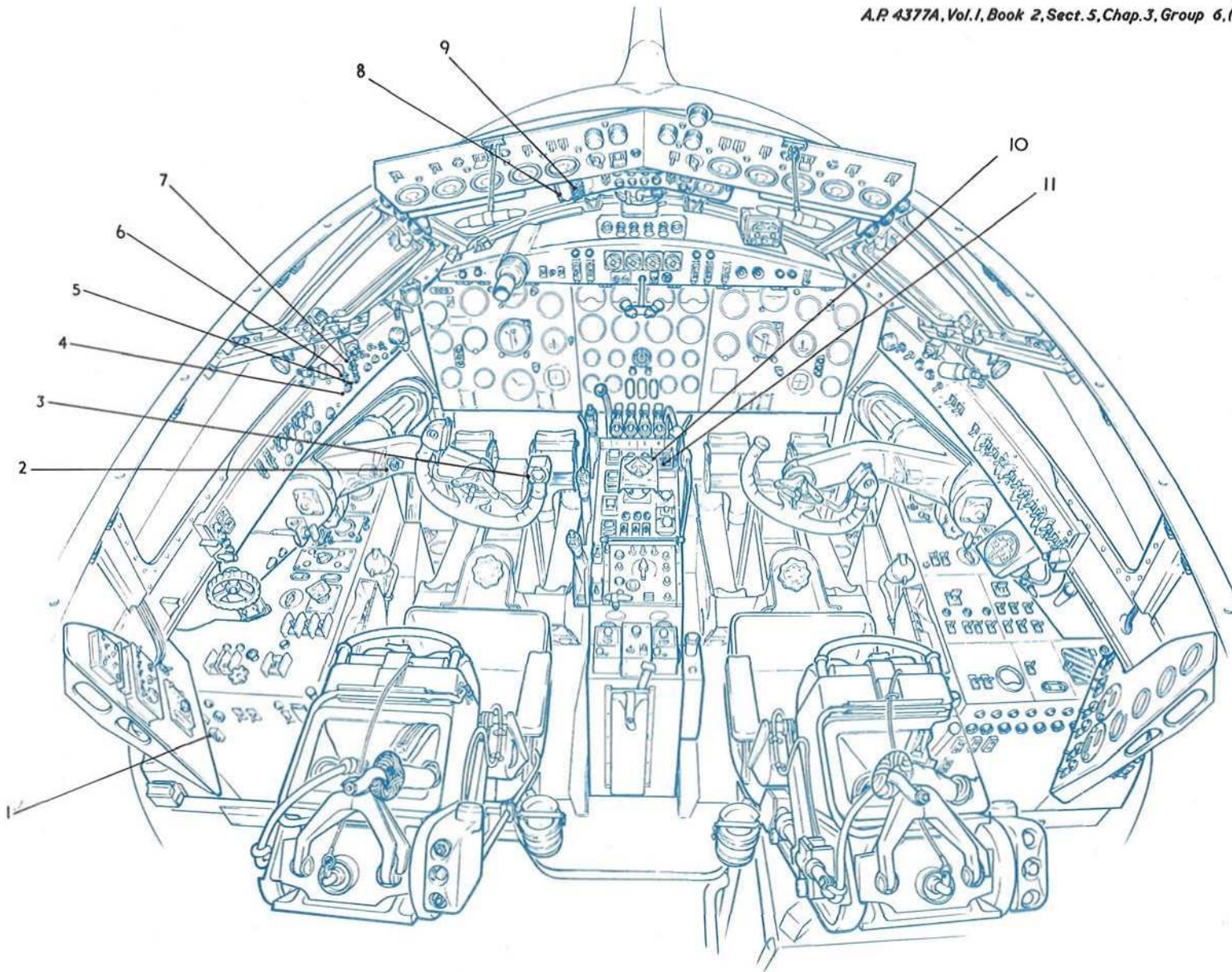


Fig. 4 Equipment in cockpit (pre mod. 2331)

(A.L. 26 57.)

Key to Fig. 4 (Equipment in cockpit—pre-Mod. 2330 or 2331)

- 1 R.A.T.O.G. SUPPLY CIRCUIT BREAKER
 - 2 BOMB RELEASE PUSH-SWITCH (pre-Mod. 1197 only)
 - 3 R.A.T.O.G. FIRING PUSH SWITCH
 - 4 R.A.T.O.G. INDICATOR LAMP, PORT
 - 5 R.A.T.O.G. INDICATOR LAMP, STARBOARD
 - 6 R.A.T.O.G. MASTER SWITCH
 - 7 R.A.T.O.G. JETTISON SWITCH
 - 8 WING CLEARING EMERGENCY SWITCH
 - 9 WING CLEARING EXTREME EMERGENCY SWITCH
 - 10 { BOMB JETTISON SWITCH (pre-Mod. 2484)
BOMB JETTISON SWITCH NO. 2 (post Mod. 2484)
 - 11 BOMB JETTISON SWITCH NO. 1 (post Mod. 2484 only)
- } These two switches are combined post Mod. 1185 but are removed completely by Mod. 2296
- } These two are mechanically linked

Key to Fig. 5 (Equipment in cockpit—post Mod. 2330 or 2331)

- 1 R.A.T.O.G. MASTER SWITCH
- 2 R.A.T.O.G. RELEASE SWITCH
- 3 R.A.T.O.G. EMERGENCY RELEASE SWITCH
- 4 R.A.T.O.G. INDICATOR LAMP, PORT
- 5 R.A.T.O.G. FIRING SWITCH
- 6 R.A.T.O.G. INDICATOR LAMP, STARBOARD
- 7 EMERGENCY WING CLEARING SWITCH (pre-Mod. 2296 only)
- 8 { BOMB JETTISON SWITCH (pre-Mod. 2484)
- { BOMB JETTISON SWITCH NO. 2 (post Mod. 2484) } These two are mechanically linked
- ◀ 8A R.A.T.O.G. THRUST INDICATORS (pre-Mod. 3004) ▶
- 9 BOMB JETTISON SWITCH NO. 1 (post Mod. 2844 only)

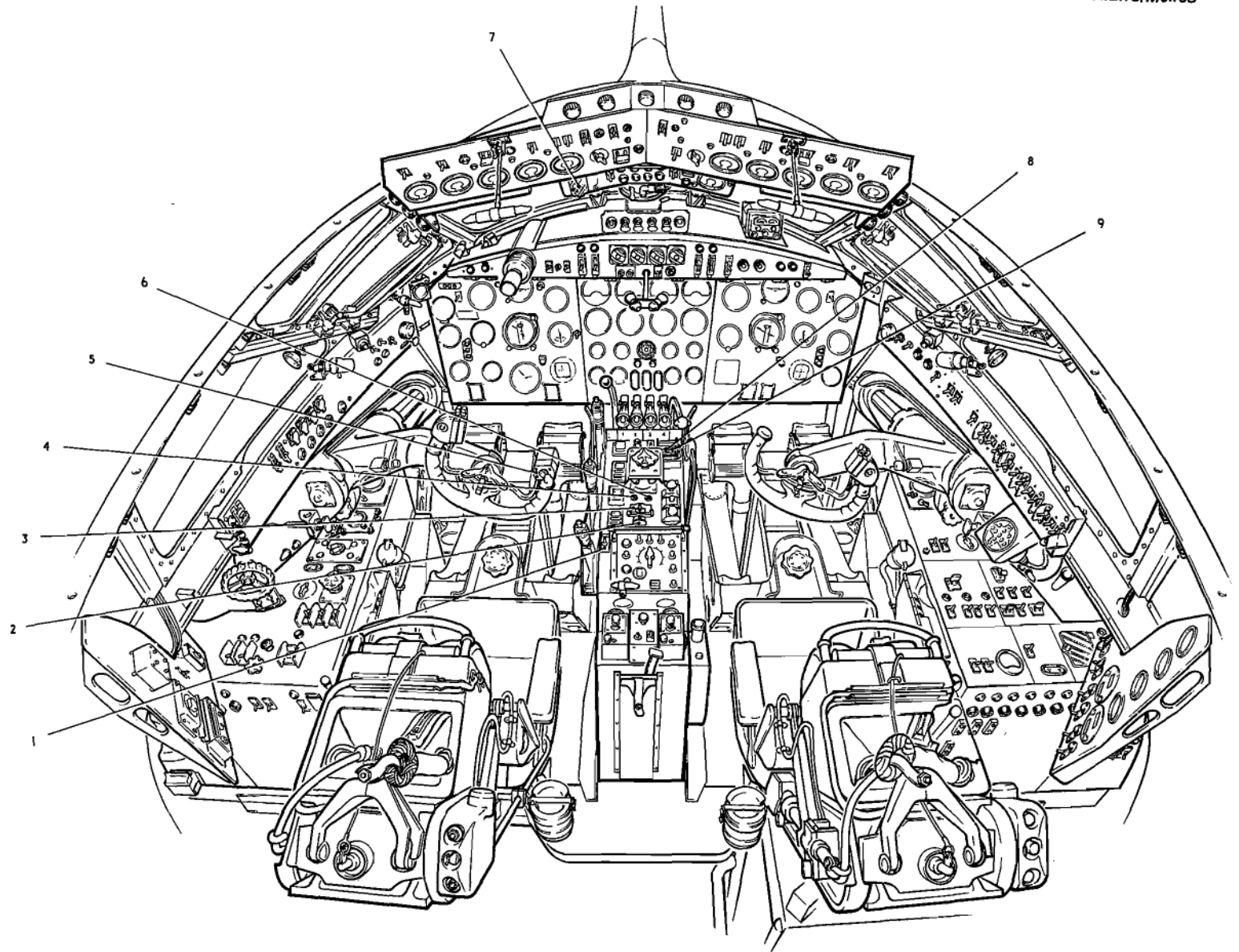


Fig. 5. Equipment in cockpit (post mod. 2331)

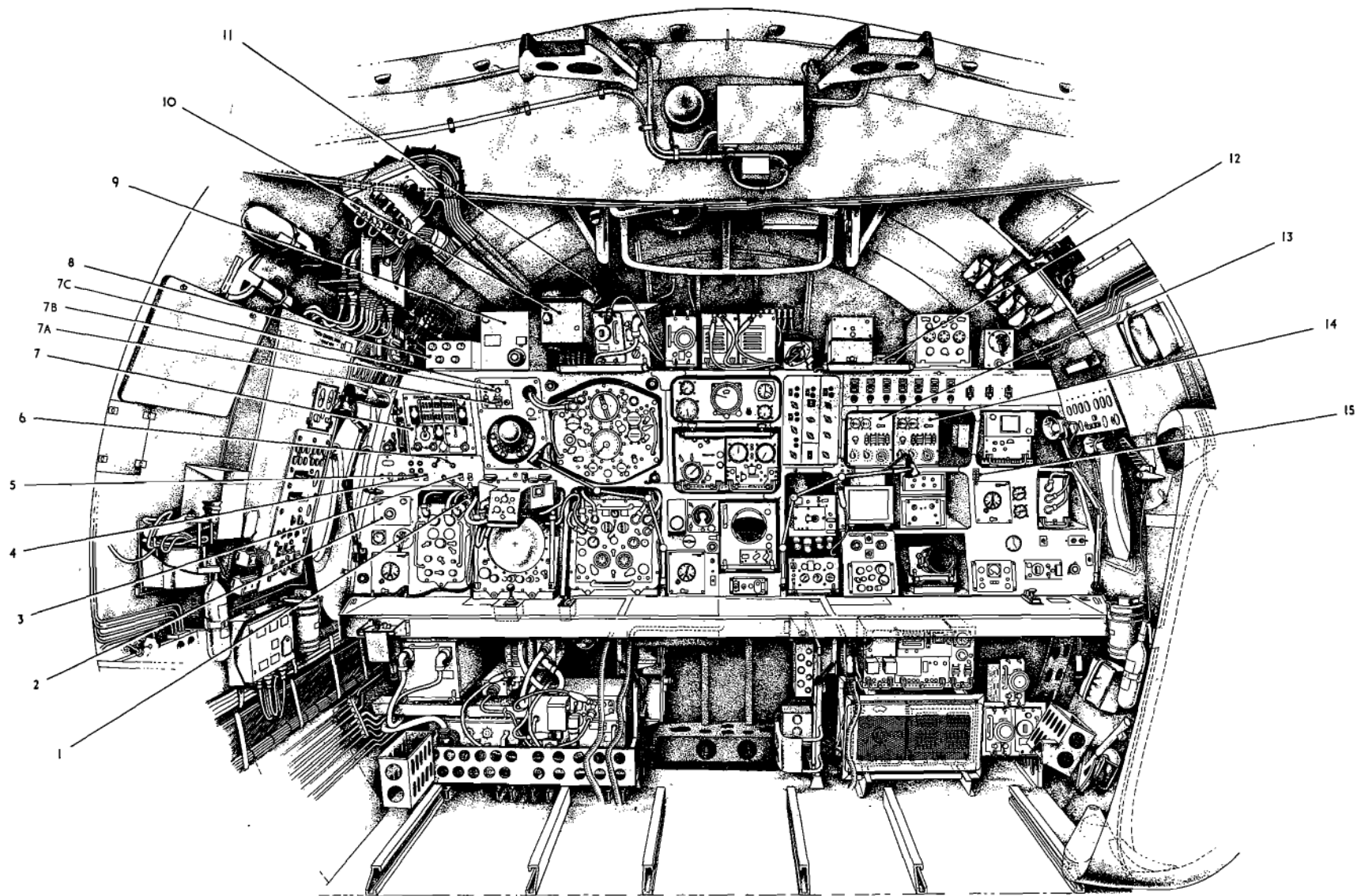


Fig. 6 Equipment at crew stations (pre. Mod. 2612, 2645, 2646 or 2725)(post. Mod. 2385)

RESTRICTED

**KEY TO FIG. 6. EQUIPMENT AT CREW STATIONS (Pre. Mod. 2612, 2645, 2646 or 2725)
(post Mod. 2385)**

- 1 BOMB RELEASE SWITCH
- 2 E.L. FUZE TIMING SELECTOR UNIT
- 3 FUSELAGE/FUSELAGE AND WINGS SWITCH (labelled SINGLE/PAIRS pre. Mod. 2039)
- 4 V.T. FUZING ON/OFF SWITCH
- 5 E.M. FUZING NOSE/NOSE AND TAIL SWITCH
- 6 WING NACELLE BOMBS GONE INDICATORS (not operational)
- 7 12/24 WAY BOMB AIMER'S PANEL
- 7A BOMB RELEASE NORMAL-ISOLATE SWITCH
- 7B BOMB RELEASE INDICATOR
- 7C N.B.C./BOMB GEAR ISOLATION PANEL
- 8 E.L. FUZING AIRBURST CONTROL UNIT (delay setting)
- 9 12/24 WAY CONTROL UNIT
- 10 TYPE 9, MK. 2 BOMB DISTRIBUTOR
- 11 PULSE DELAY UNIT (behind Type 9 distributor)
- ◀12 'WINDOW' CONTROL RELAYS (post Mod. 2385)▶
- 13 'WINDOW' CONTROL UNIT FOR STARBOARD STRIPPER UNITS
- 14 'WINDOW' CONTROL UNIT FOR PORT STRIPPER UNITS
- ◀15 'WINDOW' CONTROL NORM/EMERG SWITCH (post Mod. 2385)▶

} Post Mod. 2456

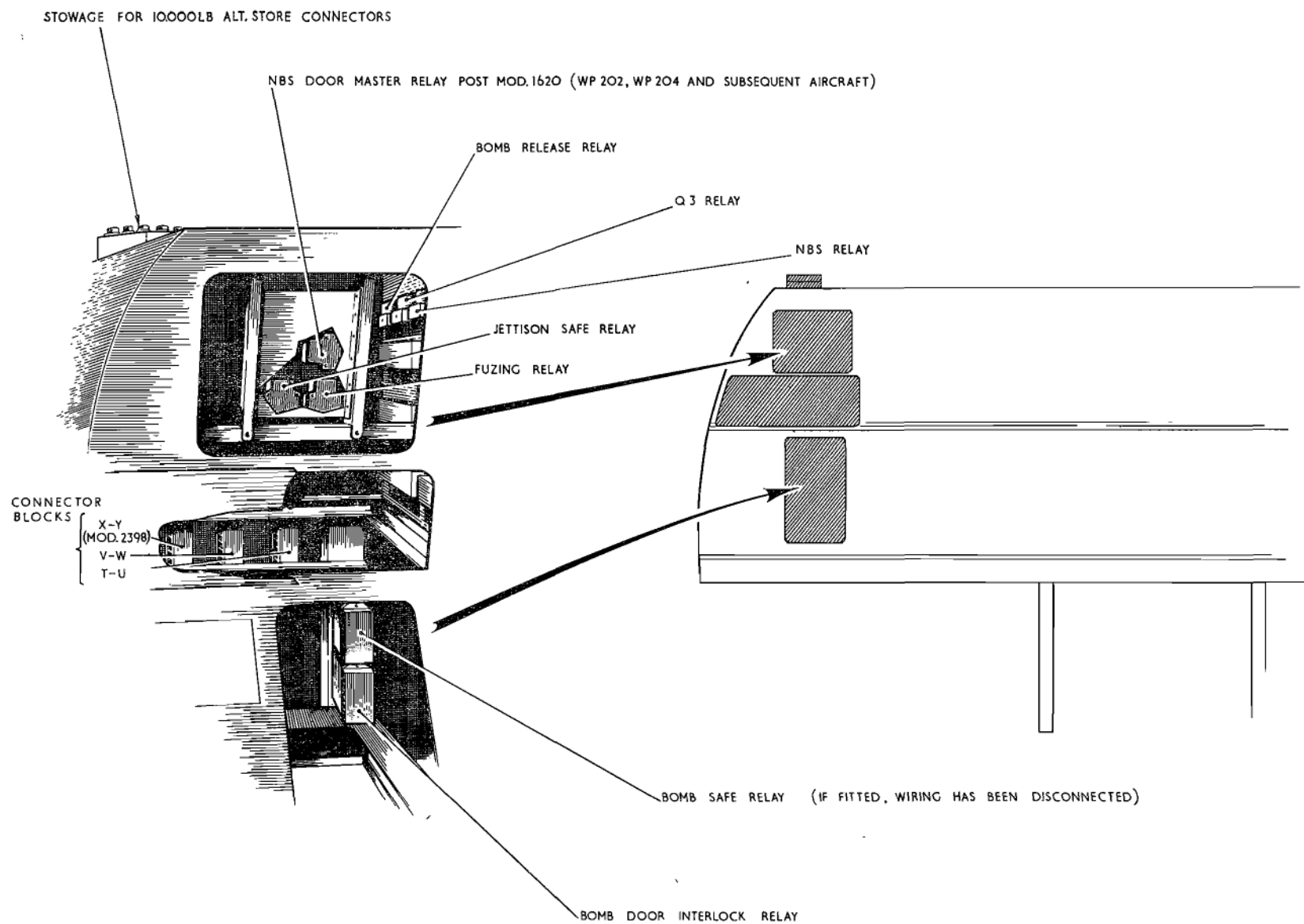


Fig. 7. Details of equipment in radio crate (pre-mod. 2612, 2645, 2646 or 2725)

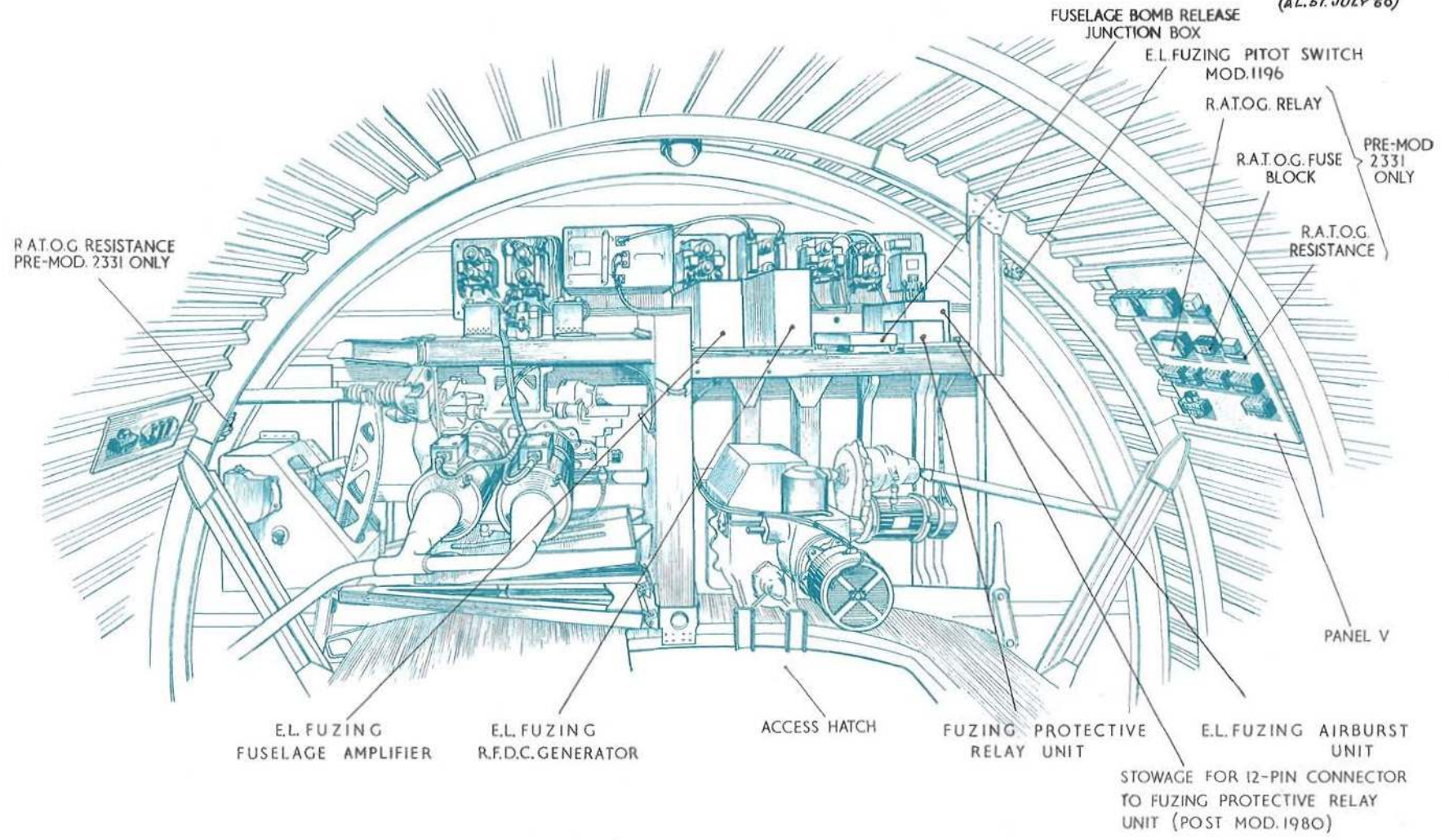


Fig. 8 Equipment near rear spar (pre Mod. 2612, 2645, 2646 or 2725)
RESTRICTED

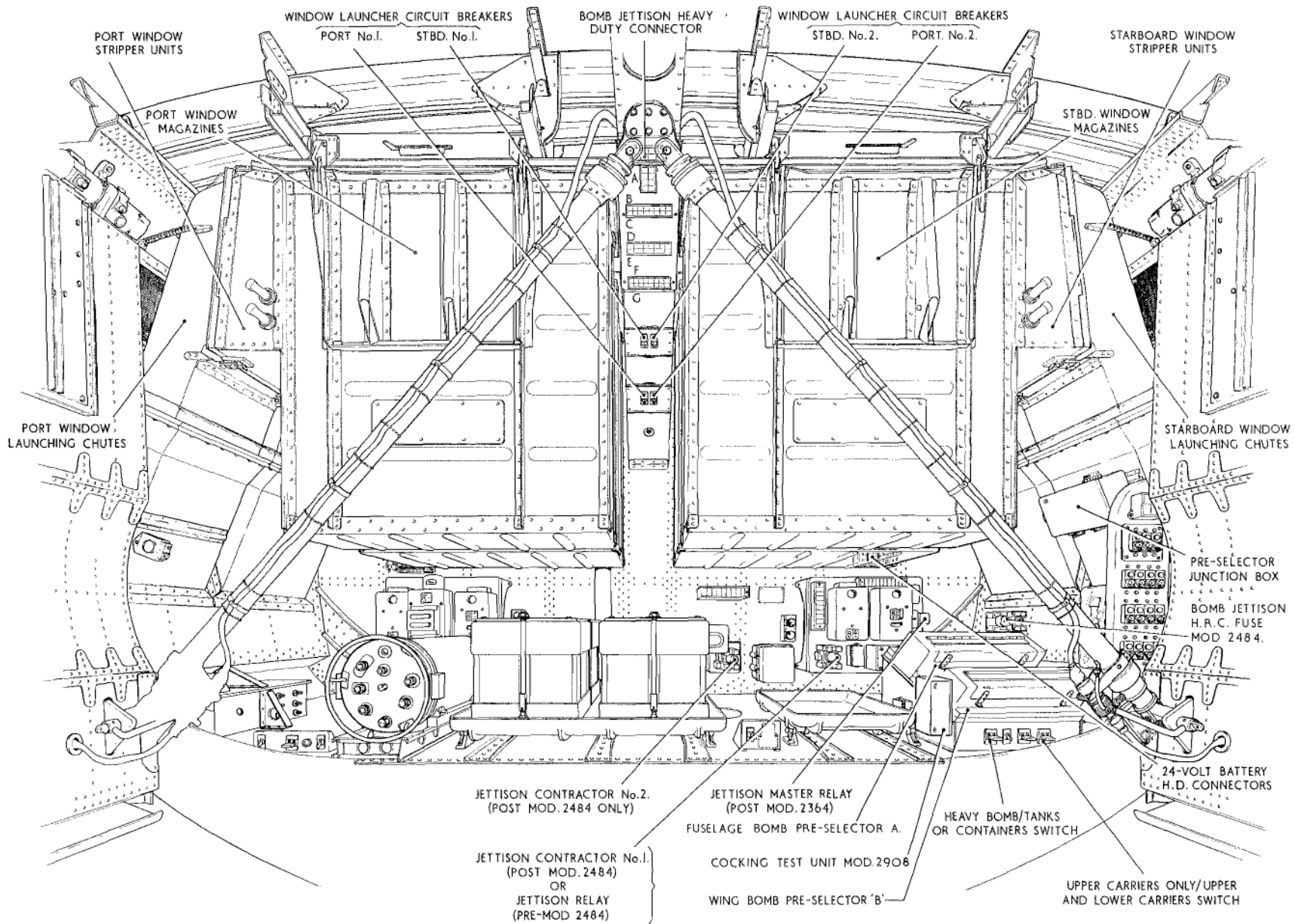


Fig.9. Equipment in battery compartment
RESTRICTED

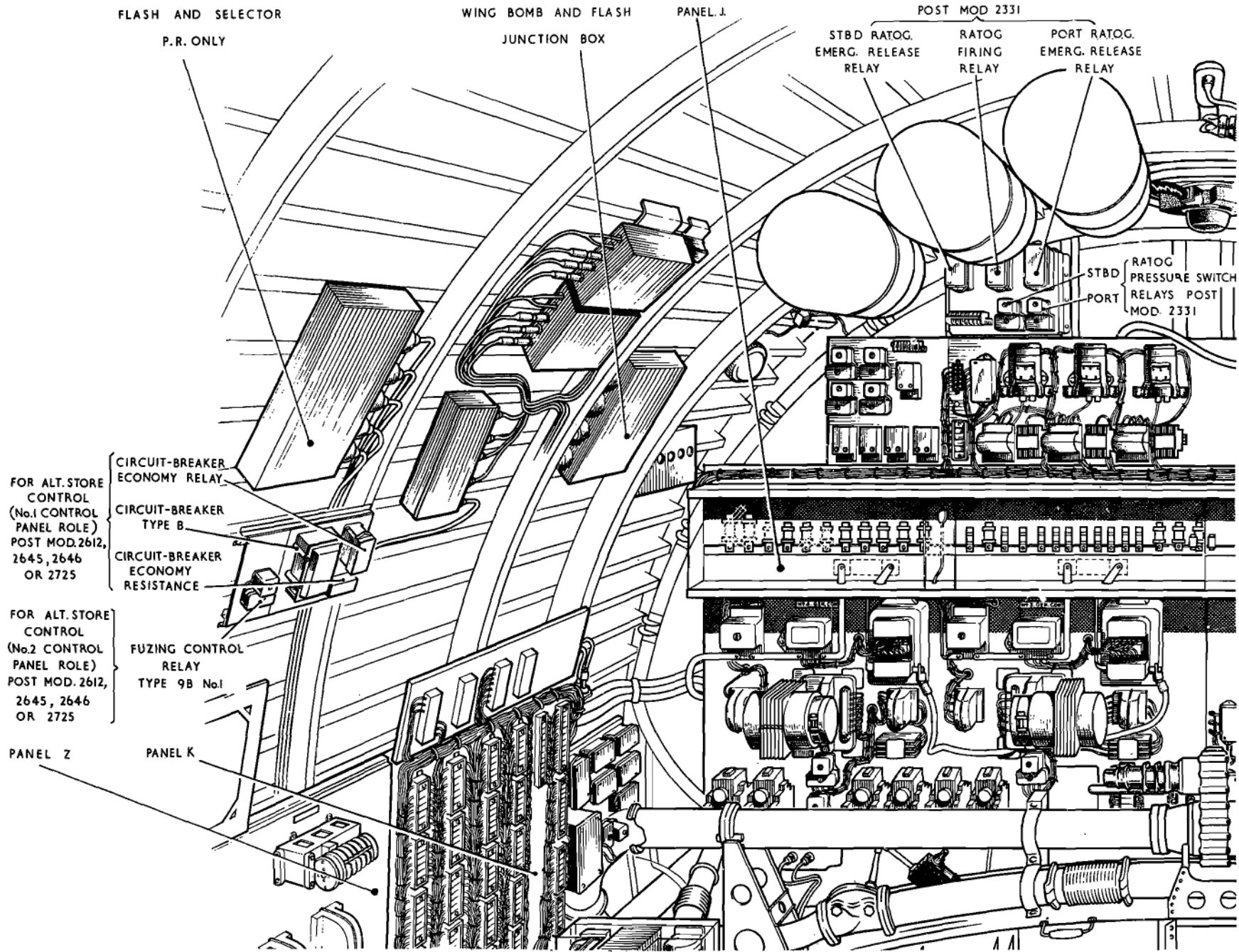


Fig. 10. Equipment near panel J.

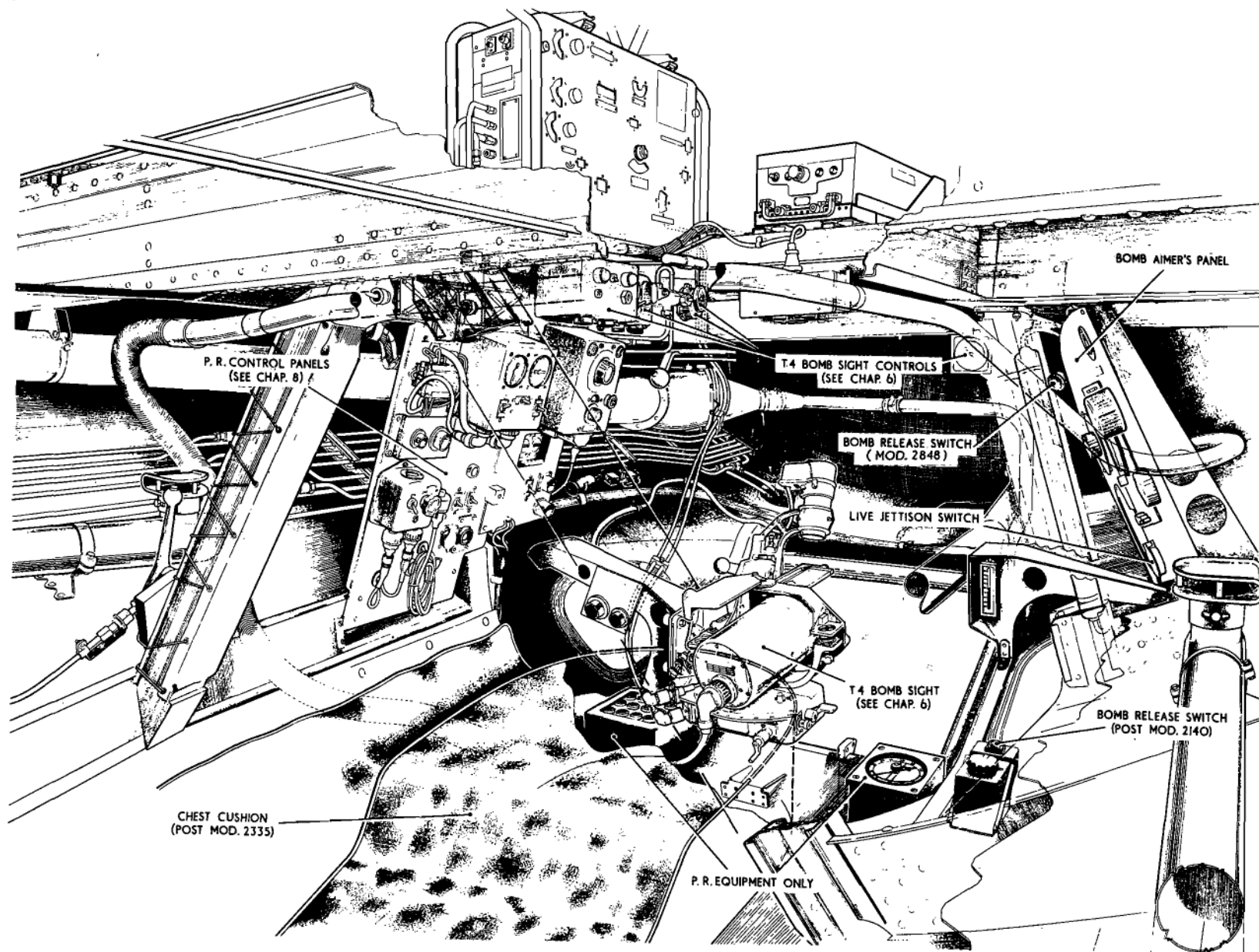


Fig.II. Equipment at bomb aimer's position
RESTRICTED

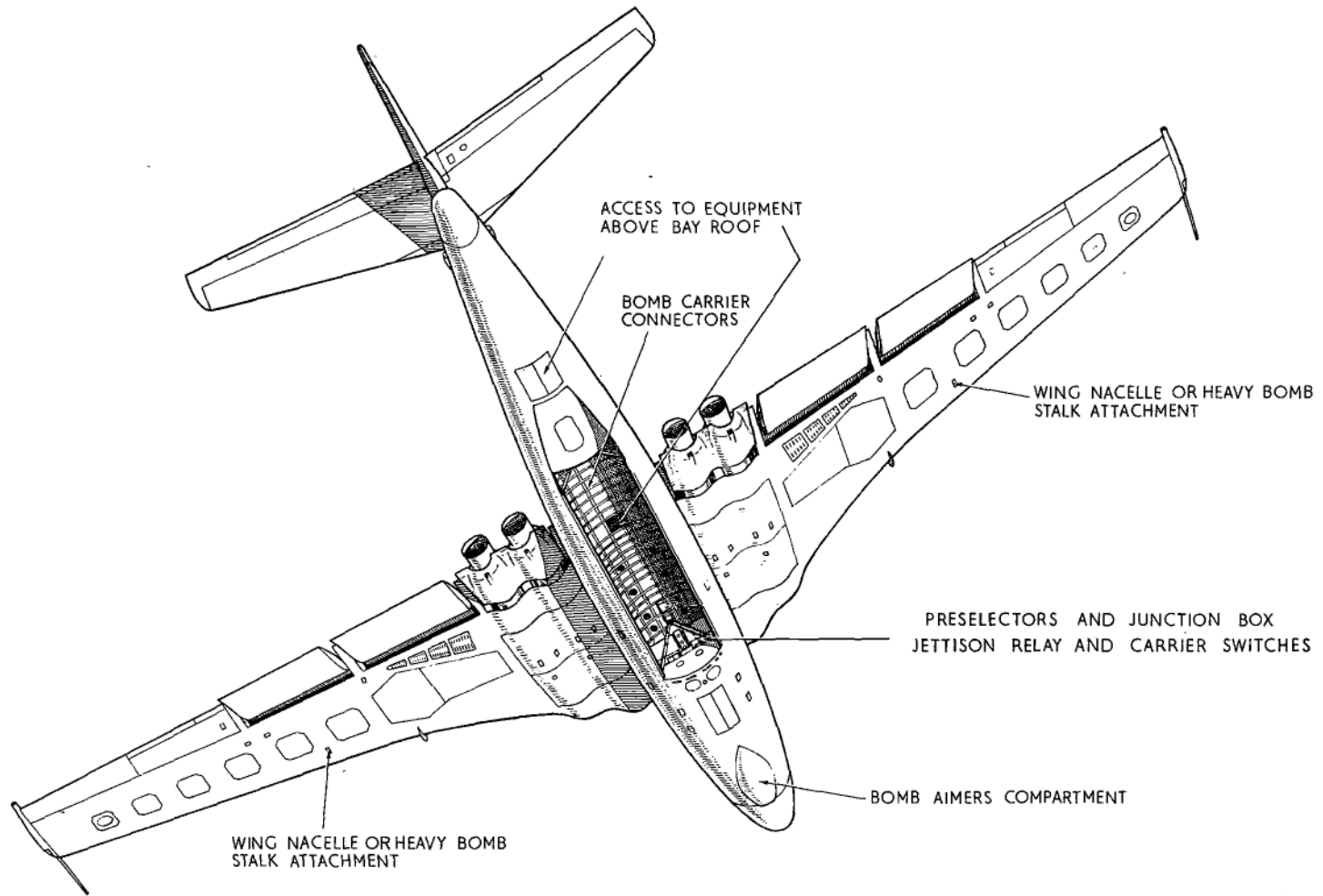


Fig. 12 Access panels
RESTRICTED

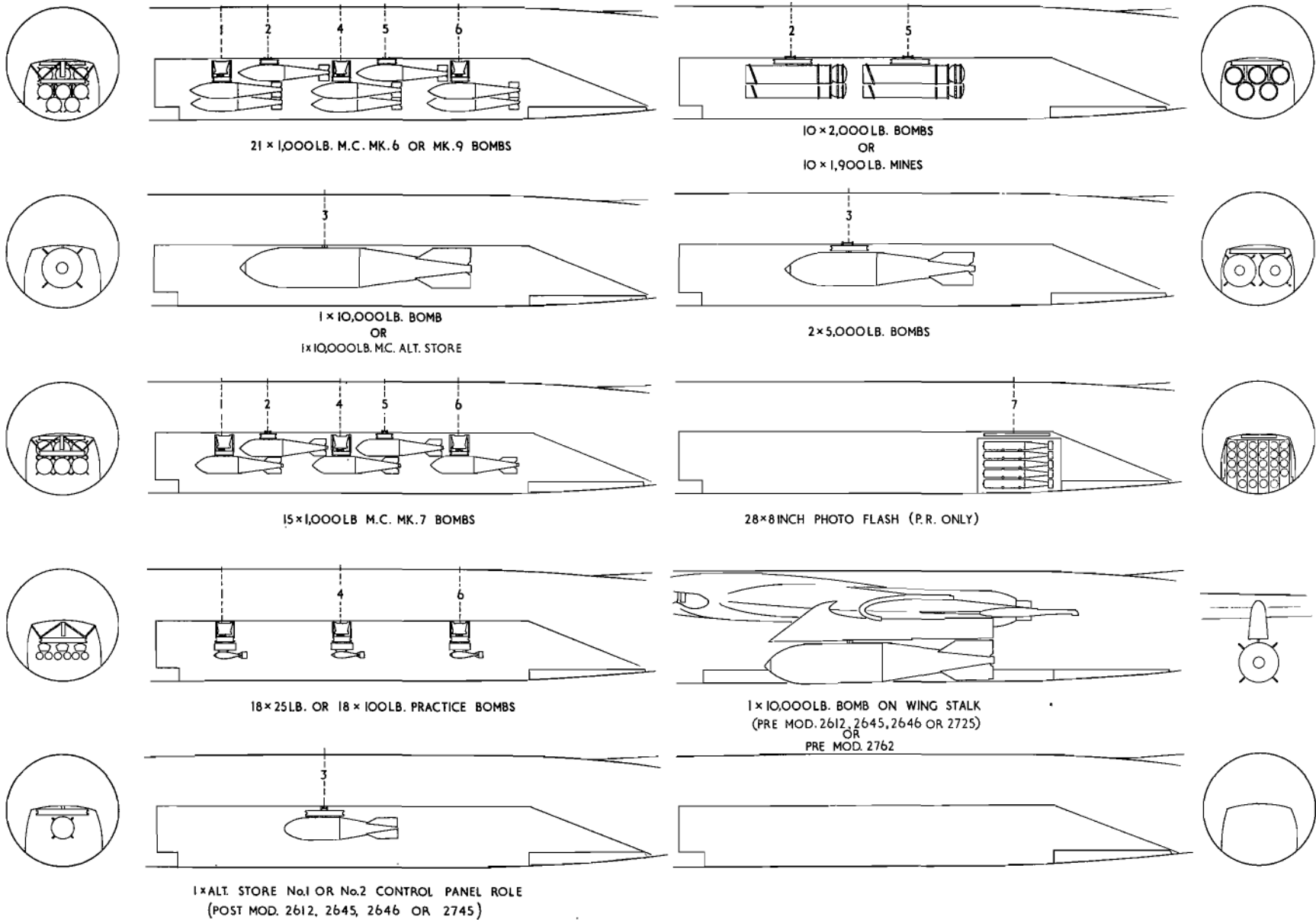
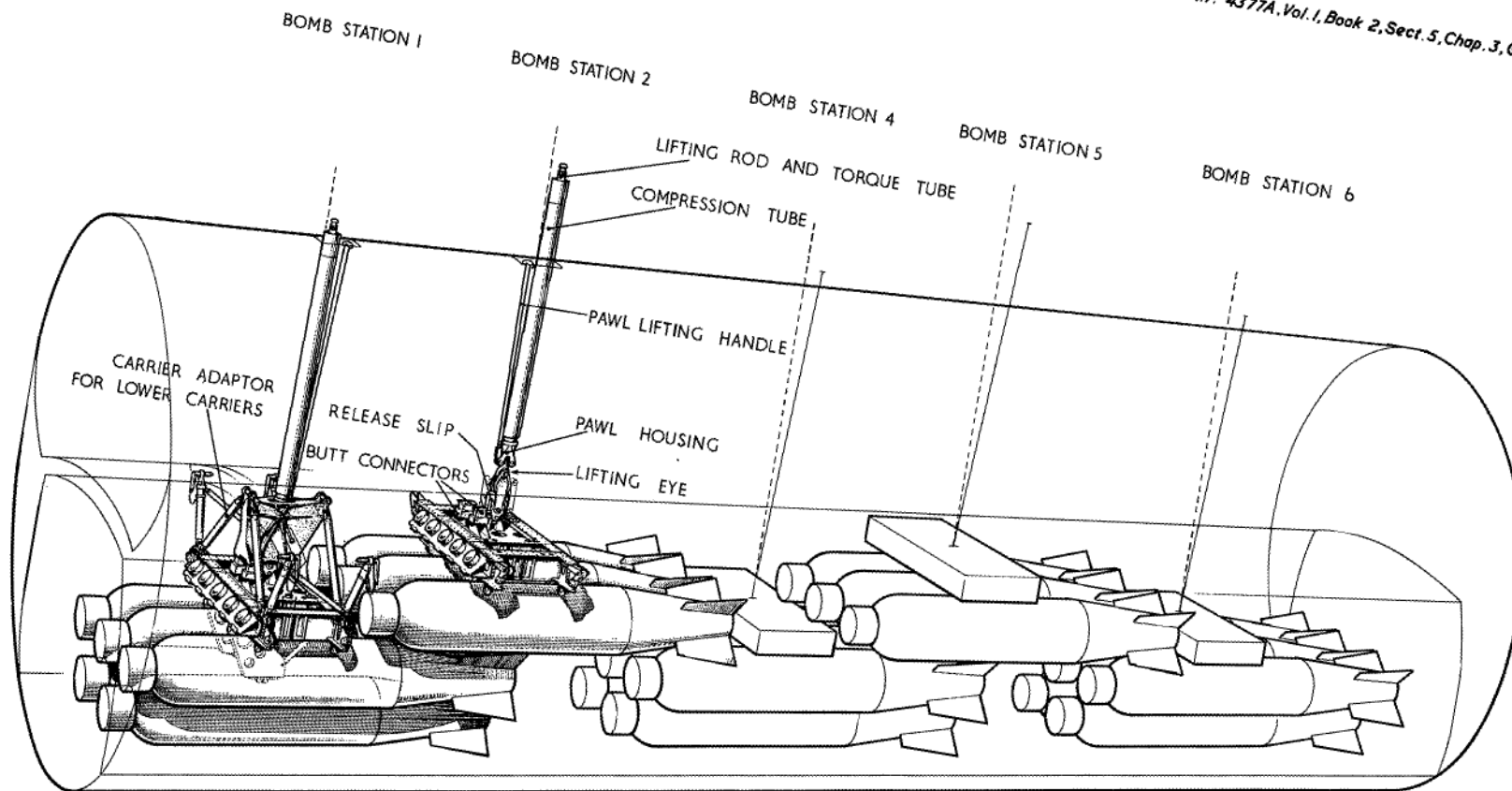


Fig. 13 Bomb Loads
RESTRICTED



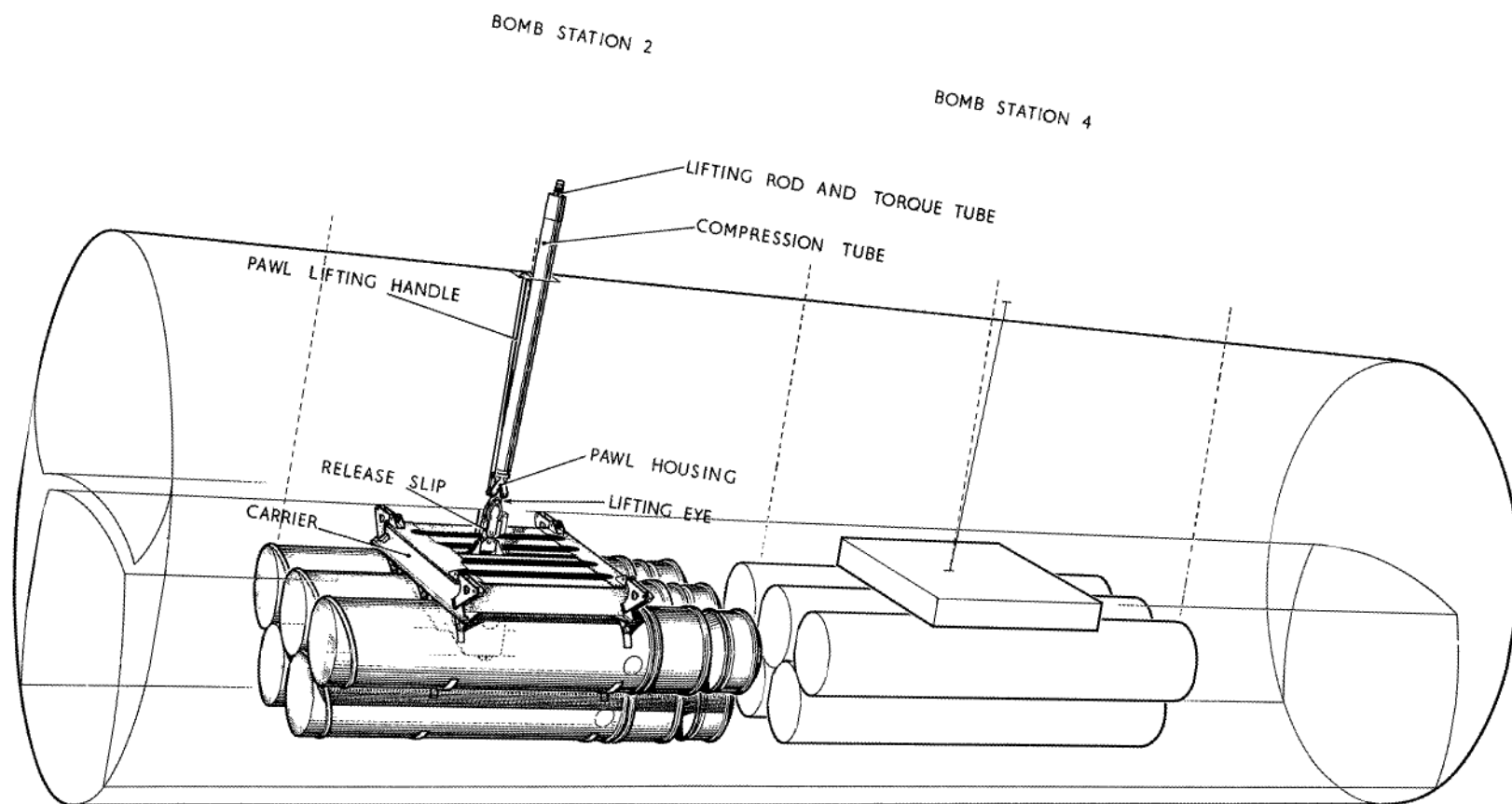


Fig 15 10-2000lb mine installation
RESTRICTED

BOMB STATION 3

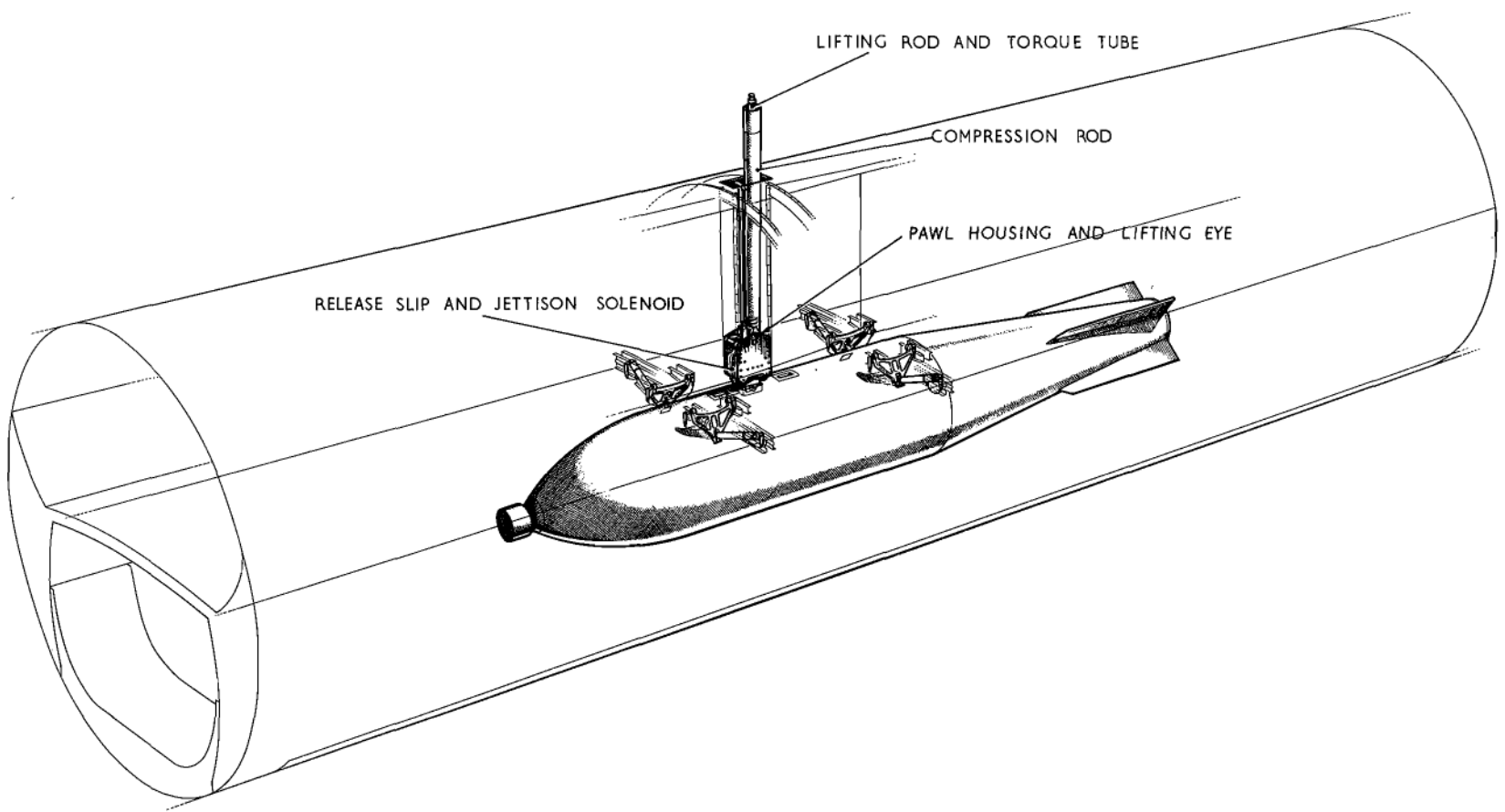


Fig. 16. 1-10,000lb H.C. bomb installation.
RESTRICTED

(A.L. 26, 57.)

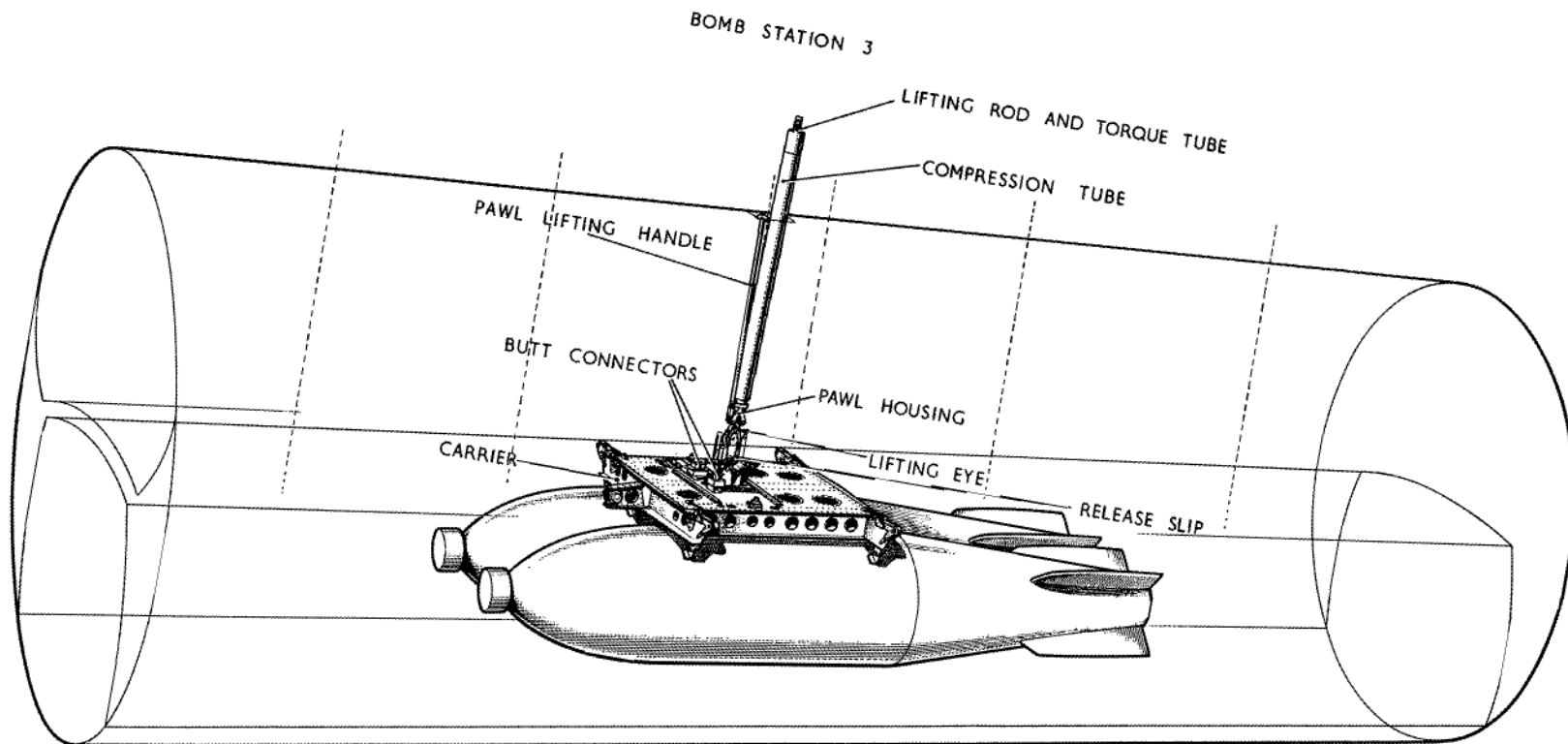


Fig.17 2-5000lb bomb installation
RESTRICTED

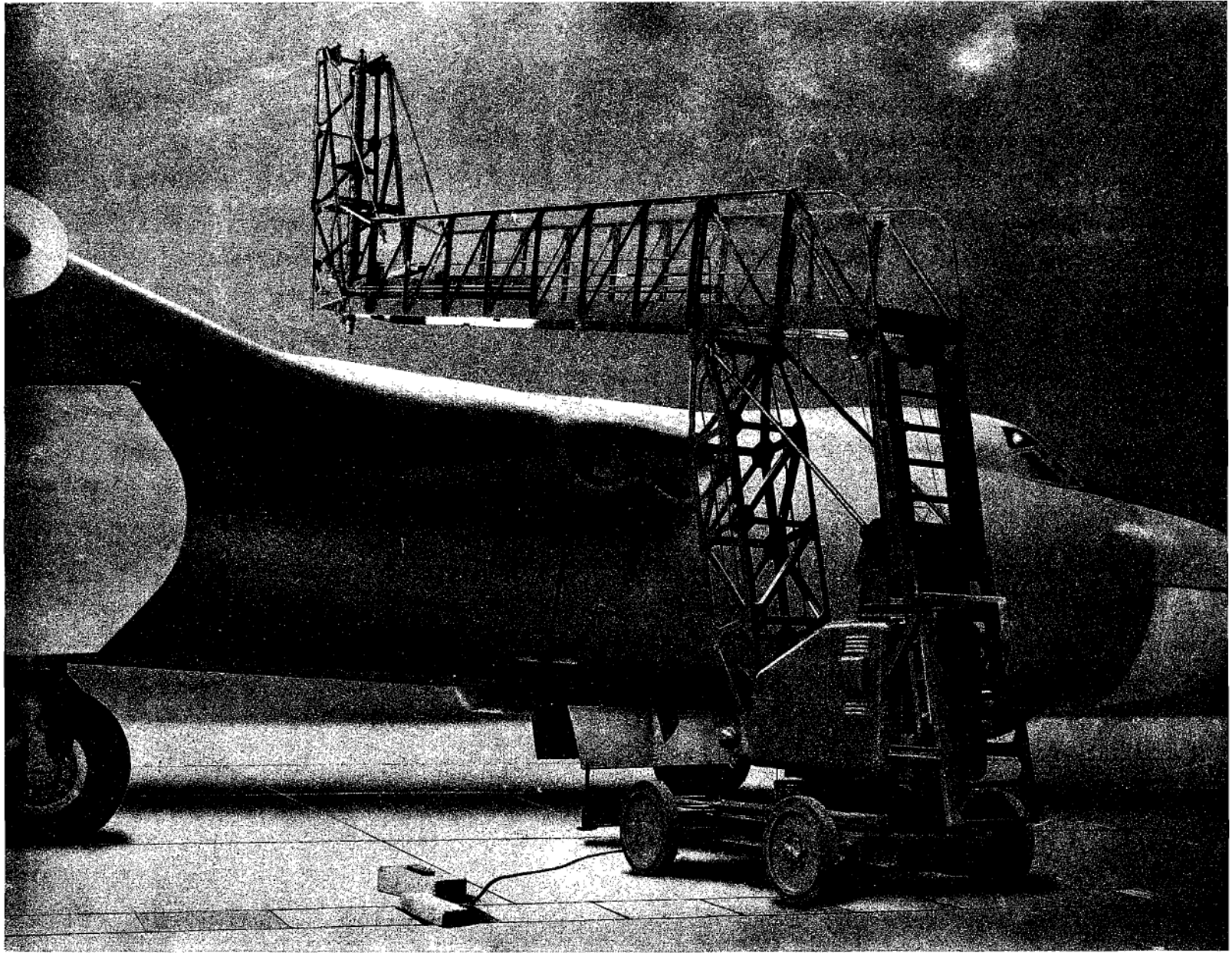


Fig. 18 Bomb hoist in position.
RESTRICTED

(A.L.26 57)

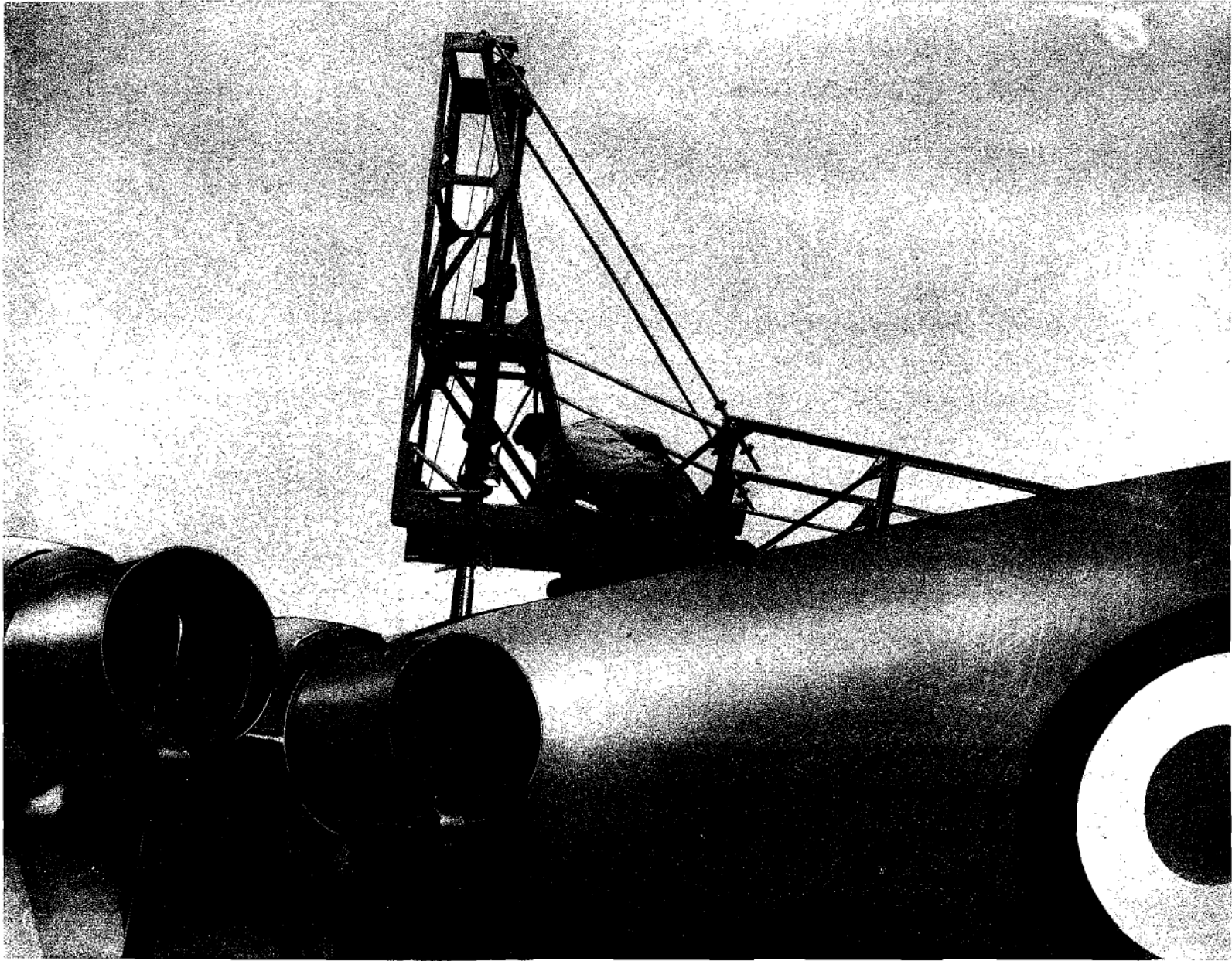


Fig. 19. Bomb hoist in operation.
RESTRICTED

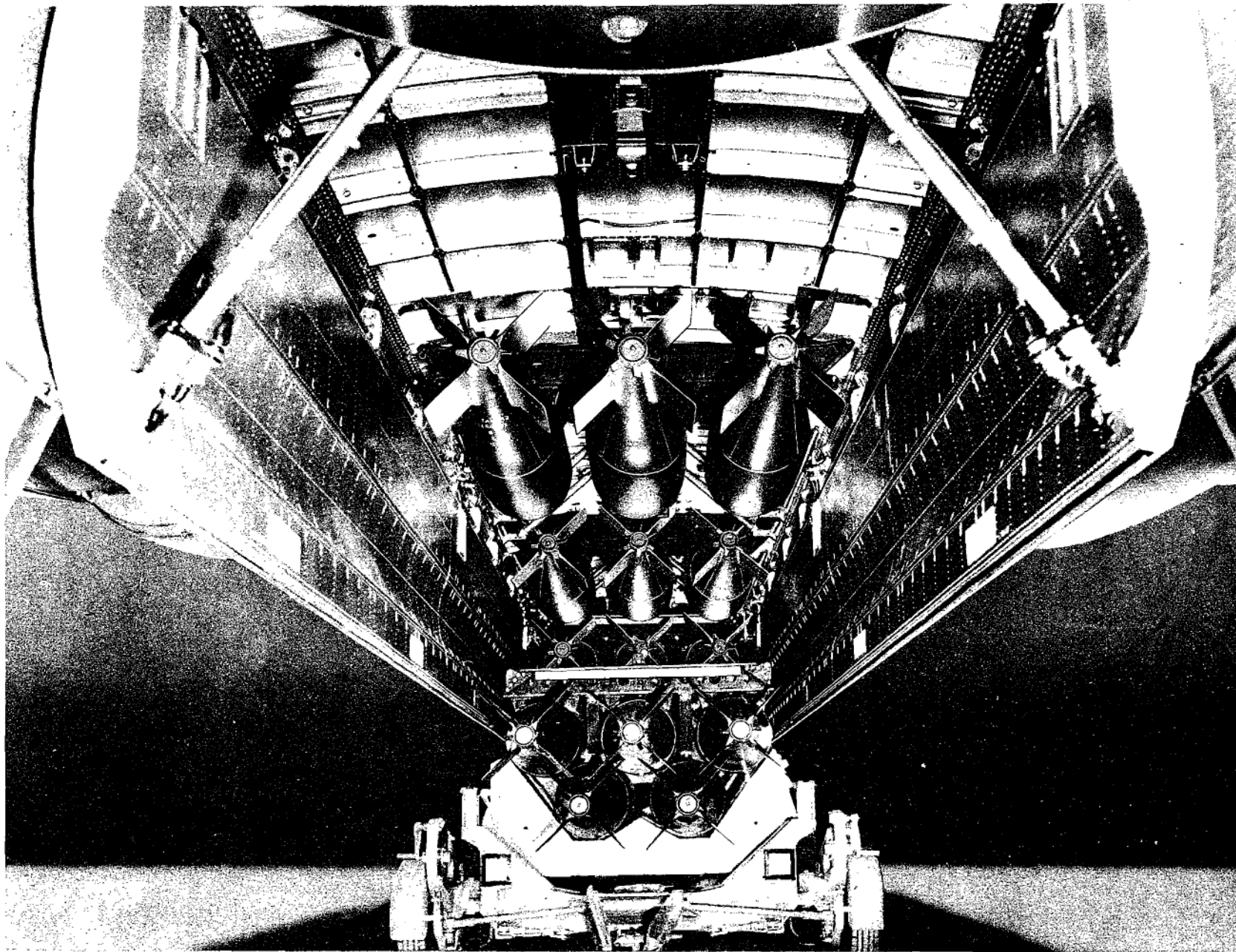
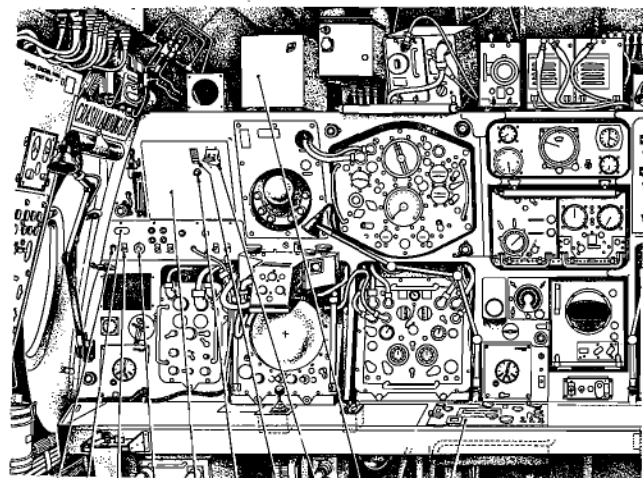


Fig.20 Stores in aircraft.
RESTRICTED



NOTE:- THIS INSET SHOWS THE EQUIPMENT
PRE MOD.2612, 2645, 2646 OR 2725.
FOR CONTROLS POST THESE MODS.
SEE FIGURES 23 AND 27.

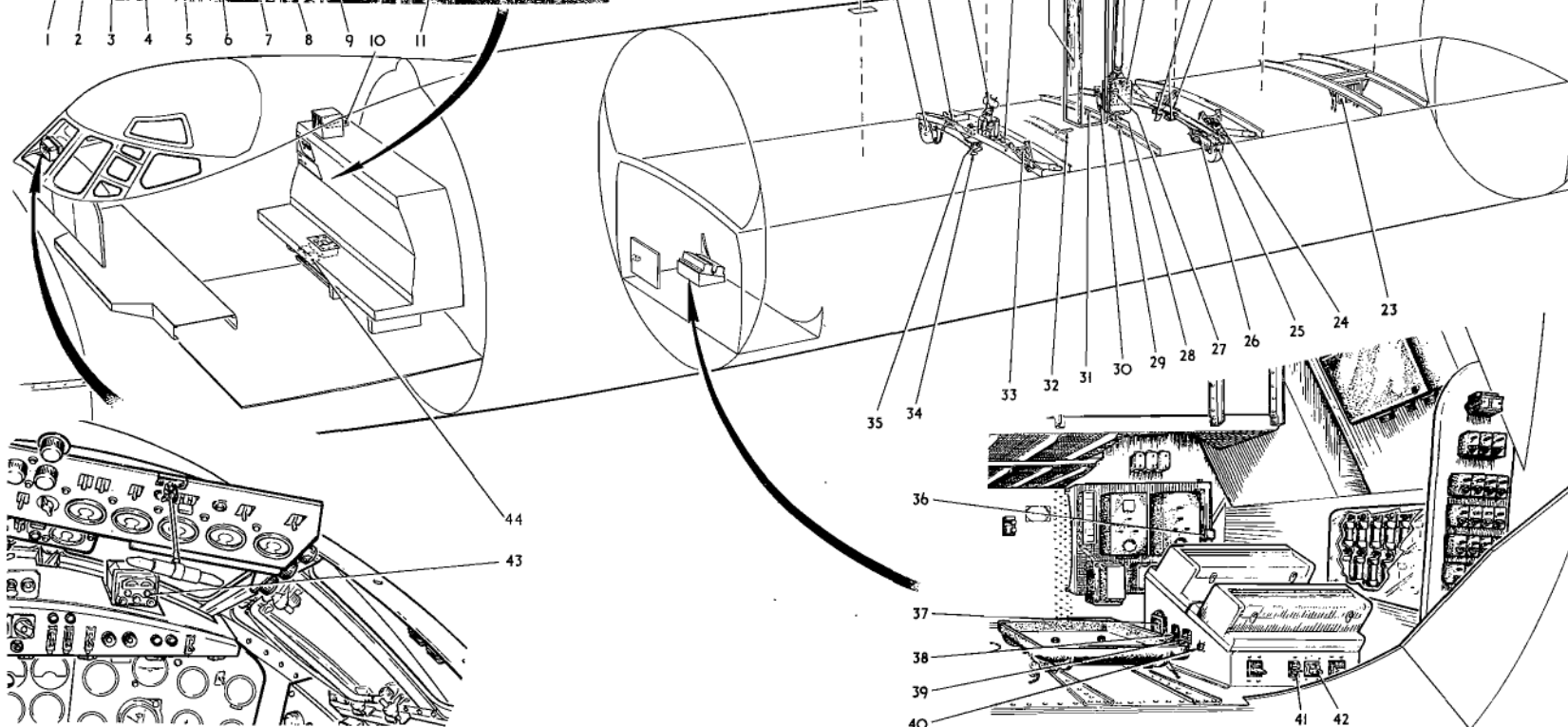


Fig.21 10000 lb. M.C. alternative store equipment
RESTRICTED

KEY TO FIG. 21. (10,000 lb. M.C. ALTERNATIVE STORE EQUIPMENT)

- | | | |
|---|--------------------------|---|
| <p>1 CHIMNEY DOWN INDICATOR
 2 CHIMNEY POSITION INDICATOR
 3 CHIMNEY CONTROL SWITCH
 4 CHIMNEY EMERGENCY CONTROL SWITCH
 5 B.S.U. (replaces normal bomb aimer's panel) (fig. 6 or 27)
 6 BOMB RELEASED INDICATOR TEST PUSH-SWITCH
 7 BOMB RELEASED INDICATOR
 8 MASTER SWITCH
 9 FUZE CONTROL UNIT (replaces normal 12/24 bomb control unit) (fig. 6 or 23)
 10 STOWAGE PANEL FOR BOMB AND FUZE CONTROL UNIT CONNECTORS
 11 TIME-OF-FALL CALCULATOR
 12 FORWARD STARBOARD SNATCH PLUG CABLE RETRACTION UNIT
 13 FORWARD SNATCH PLUG CABLE RETRACTION UNIT CONNECTORS
 14 TWIN E.M. FUZING UNIT
 15 TWIN E.M. FUZING UNIT CONNECTOR
 16 CHIMNEY (cannot be fitted post Mod. 2612, 2645, or 2646)
 17 CHIMNEY CONNECTOR NO. 2 STOWAGE } Secured to underside of chimney access hatch (pre-Mod. 2612, 2645, 2646 or 2725 only)
 18 CHIMNEY CONNECTOR NO. 1 STOWAGE }
 19 LIFTING ROD, TORQUE TUBE AND COMPRESSION ROD
 20 PAWL HOUSING AND LIFTING EYE
 21 REAR SNATCH PLUGS
 22 REAR SNATCH PLUG LATCH PLATE
 23 LANYARD PACK
 24 REAR CRUTCHES
 25 REAR PORT CABLE RETRACTION UNIT</p> | <p>} Not operational</p> | <p>26 REAR PORT CABLE RETRACTION UNIT CONNECTORS
 27 JETTISON SOLENOID
 28 NO. 3, MK. 3, E.M. RELEASE UNIT
 29 JETTISON SOLENOID CONNECTOR BLOCK A1, A2
 30 STARBOARD REAR SNATCH PLUG CABLE RETRACTION UNIT AND CONNECTOR

 31 NORMAL RELEASE SUPPLY CONNECTOR BLOCK A1, A2 } Connection made A1 for normal 10,000 lb. store. Connection made A2 for alternative store, (Post Mod. 2310)
 32 15-WAY CONNECTOR BLOCK FOR CHIMNEY SERVICE (pre-Mod. 2612, 2645, 2646 or 2725)
 33 FORWARD CRUTCHES
 34 FORWARD CRUTCH PADS
 35 FORWARD SNATCH PLUG
 36 JETTISON MASTER RELAY (post Mod. 2364)
 37 CHIMNEY GROUND TEST RELAY
 38 CHIMNEY SUPPLY CIRCUIT BREAKER
 39 CHIMNEY SUPPLY CIRCUIT BREAKER } Not operational and removed by Mod. 2612, 2645 or 2646
 40 CHIMNEY TEST SOCKET
 41 CHIMNEY TEST INCHING SWITCH
 42 CHIMNEY SERVICING SWITCH
 ◀43 REMOTE CONTROL UNIT, MK. 1 FOR TIME-OF-FALL CALCULATOR (pre-Mod. 2397)
 44 REMOTE CONTROL UNIT, MK. 2A FOR TIME-OF-FALL CALCULATOR (post Mod. 2397)▶</p> |
|---|--------------------------|---|

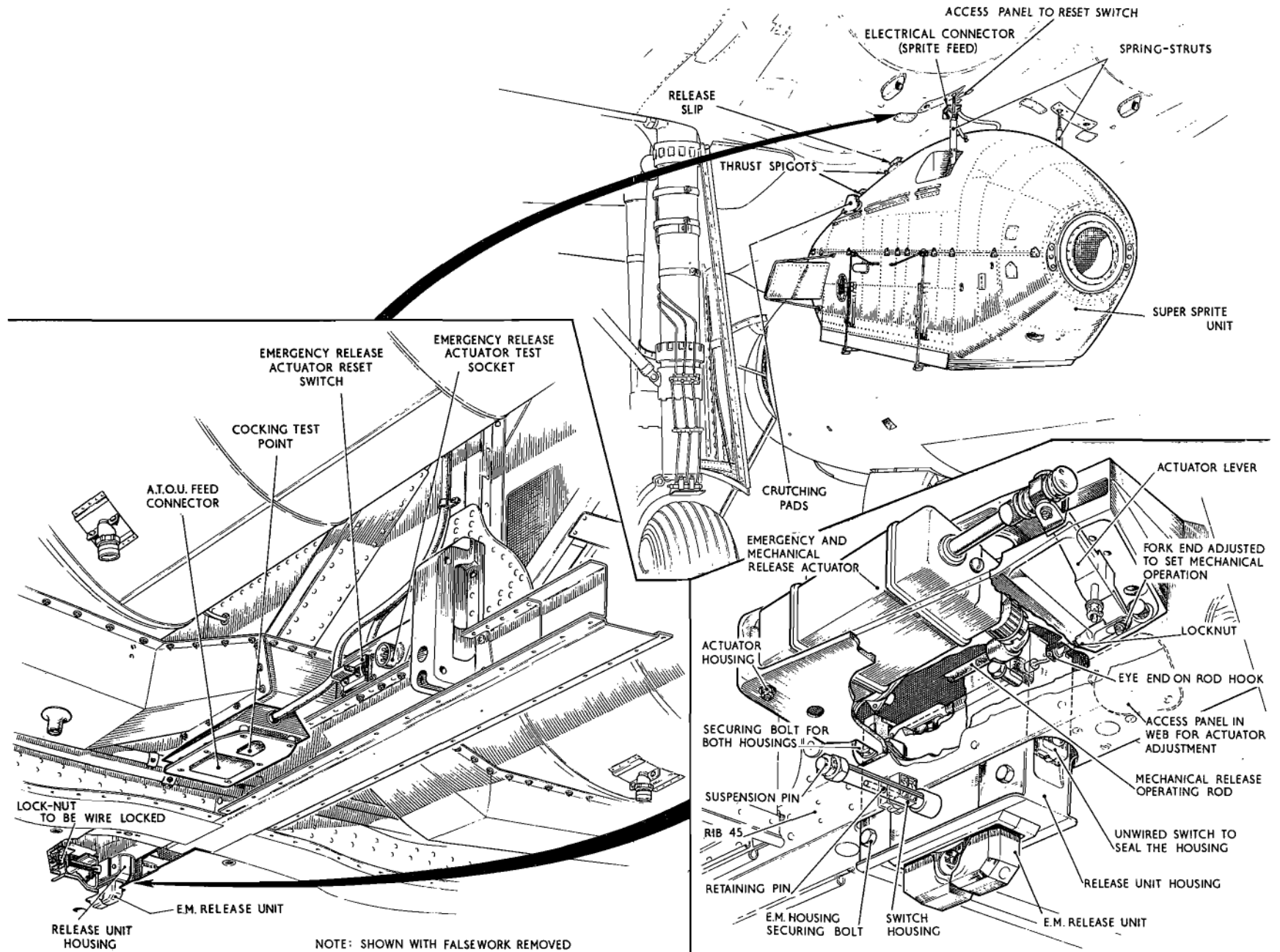


Fig.22. R.A.T.O.G. installation
RESTRICTED

D.3511. 370434. 11/63. S.W.Ltd.

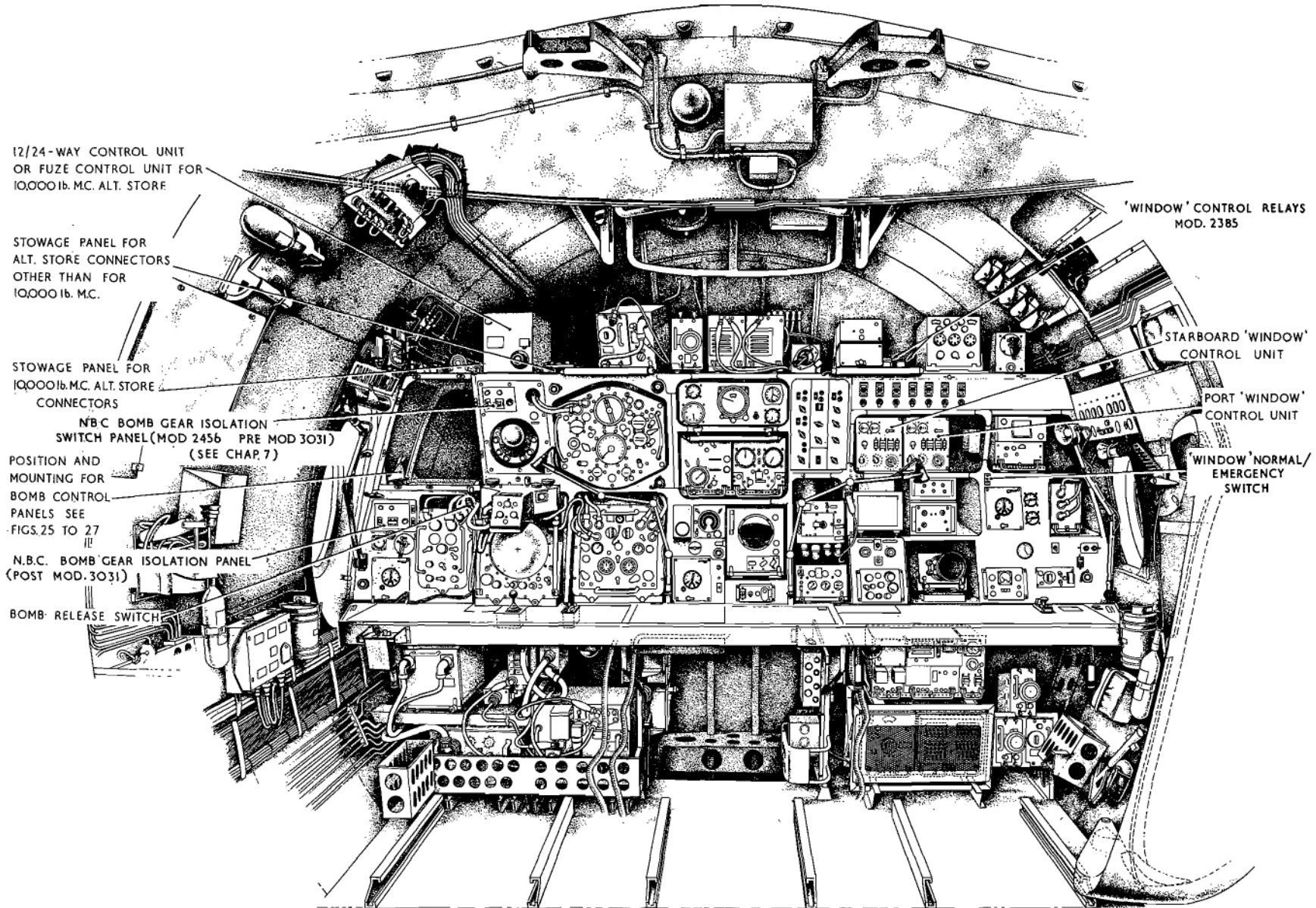


Fig. 23 Equipment at crew stations (post Mod. 2612, 2645, 2646 or 2725) (Mod. 2385)

RESTRICTED

STOWAGE PANEL FOR CONNECTORS TO CONTROL PANEL No.1 OR No.2

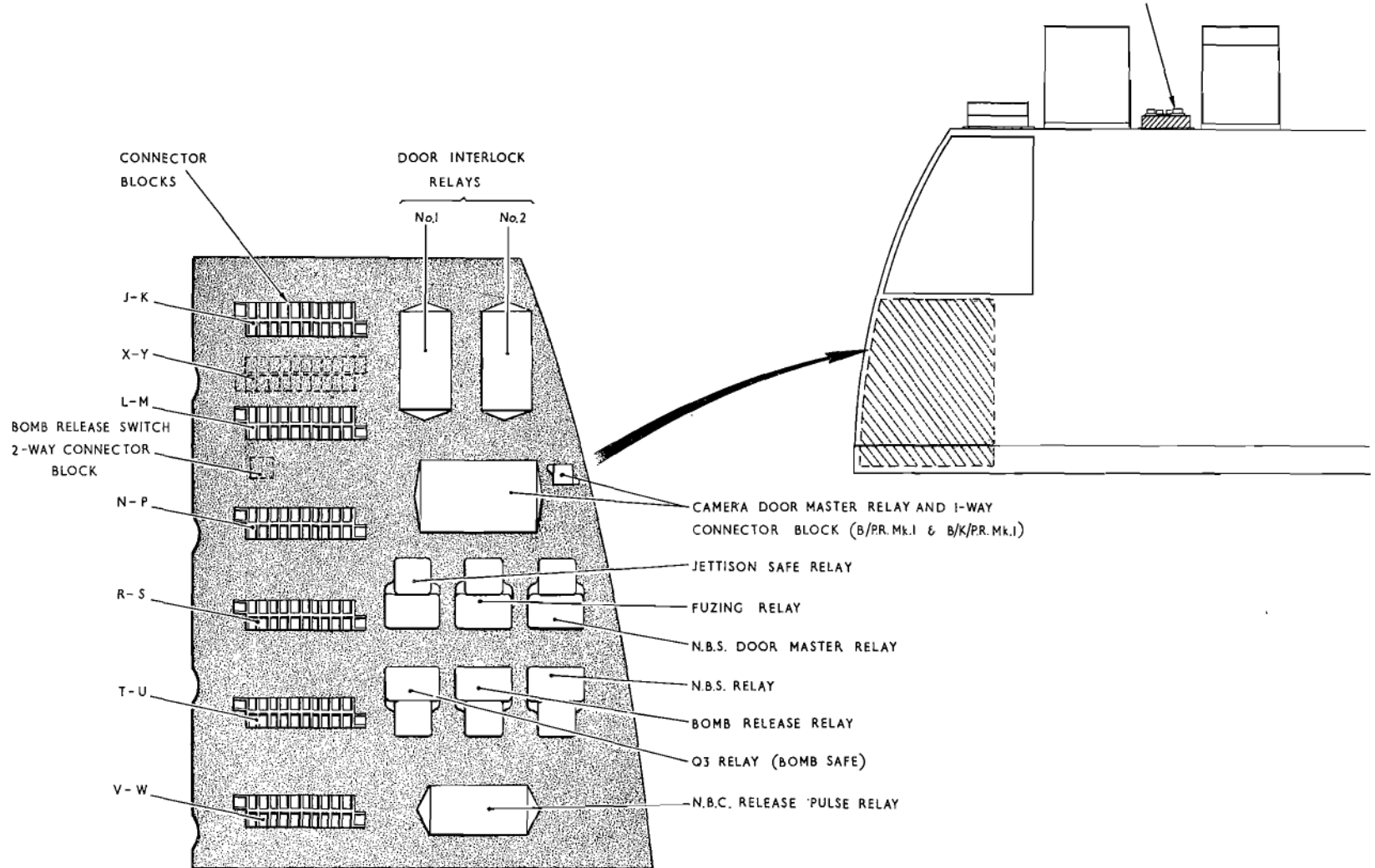


Fig.24 Details of equipment in radio crate (post Mods.2612, 2645, 2646 or 2725)

RESTRICTED

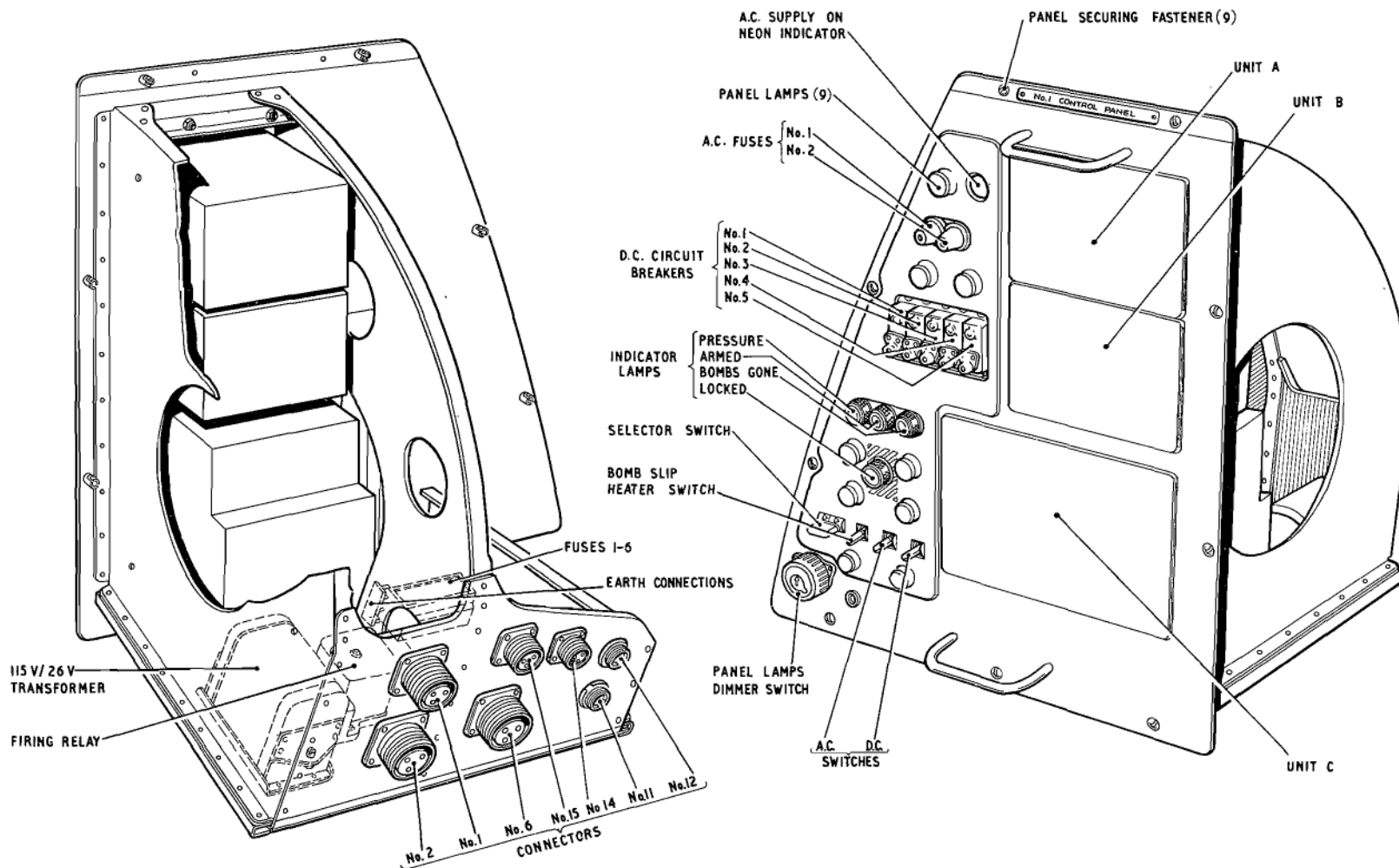


Fig. 25. No. 1 control panel (mod. 2609)

RESTRICTED

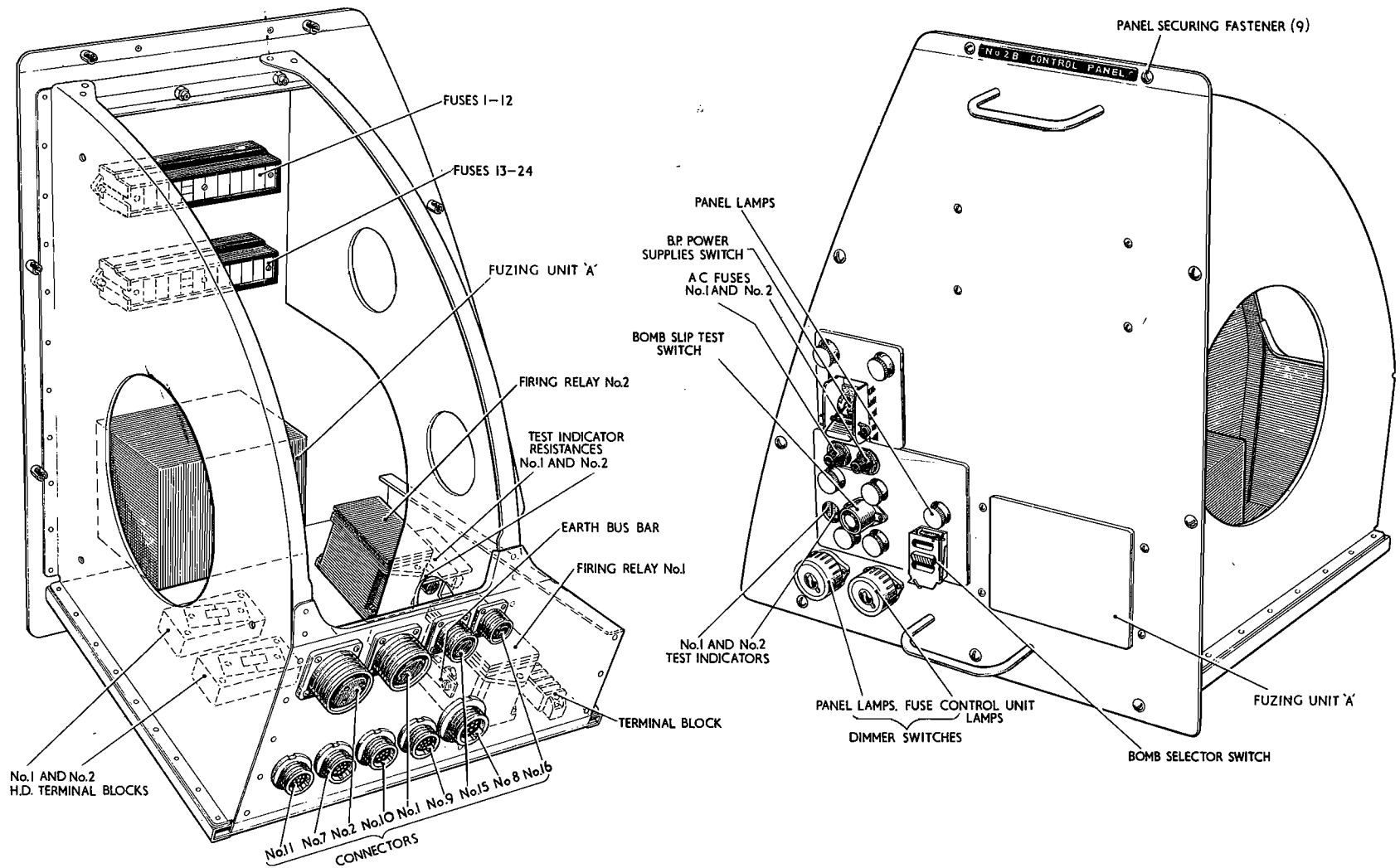


Fig. 26 No.2B Control panel (mod. 3173)

RESTRICTED

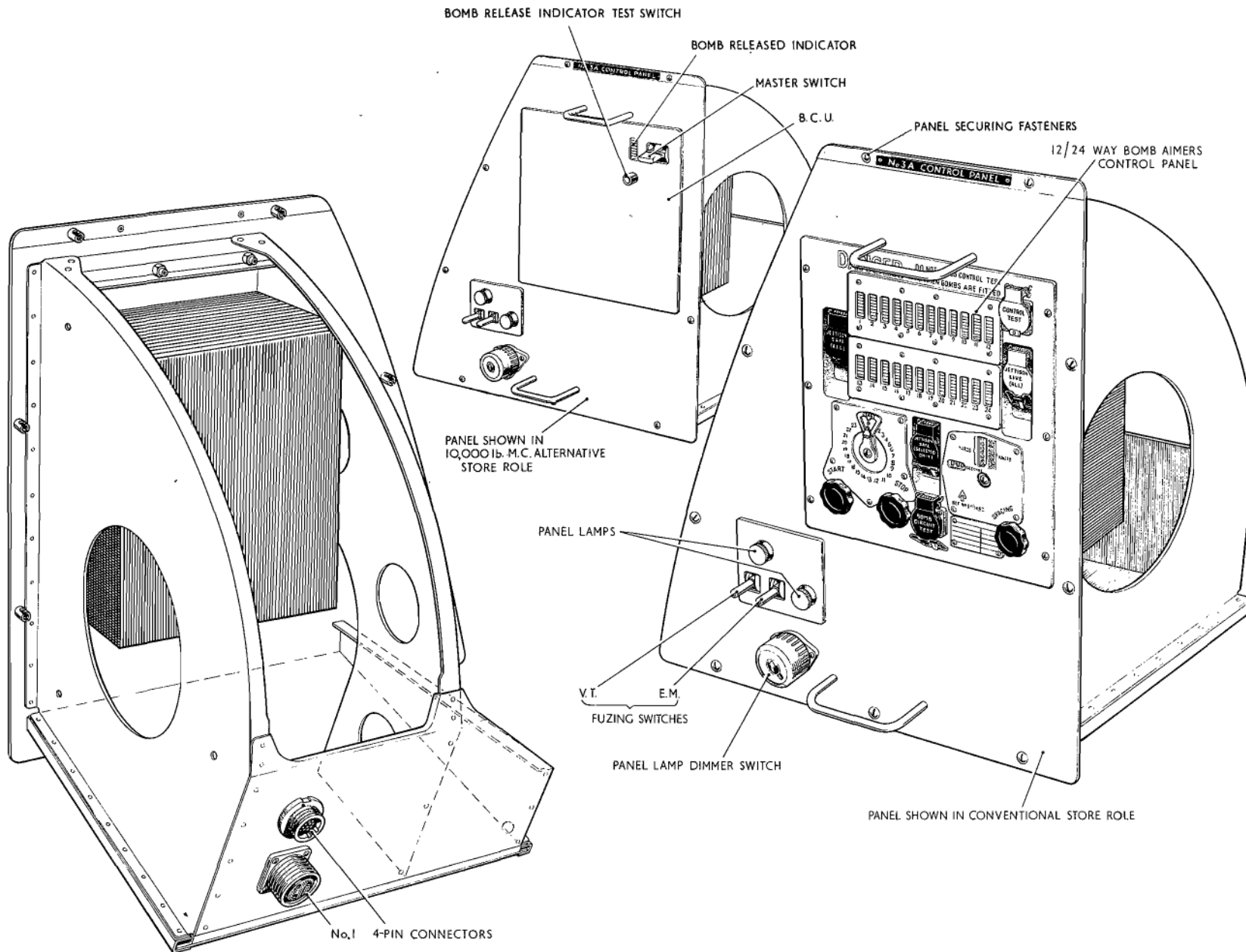


Fig. 27 No. 3A Control panel (mod. 3174)
RESTRICTED

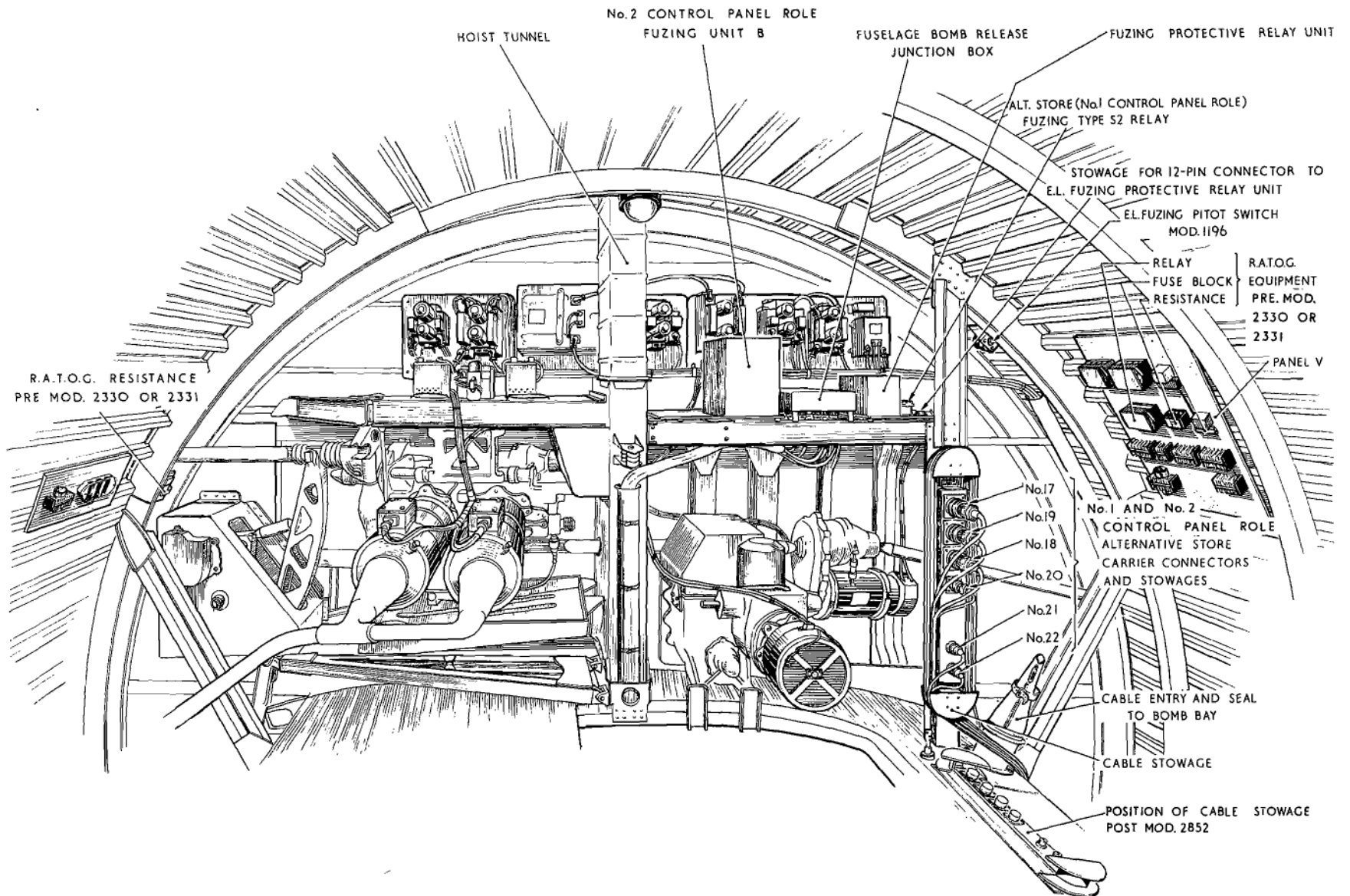
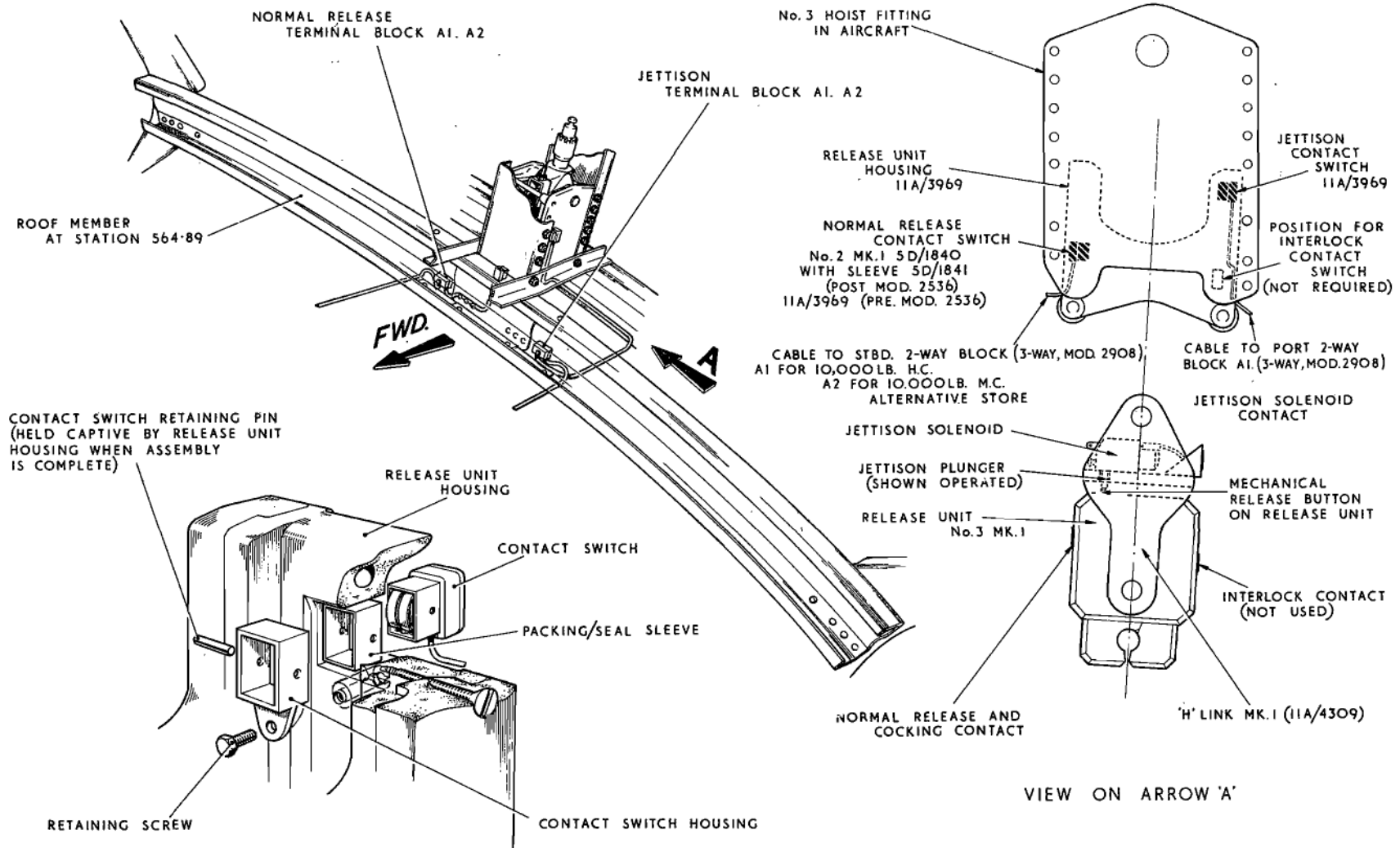


Fig. 28 Equipment near rear spar (post Mod. 2612, 2645, 2646 or 2725)

RESTRICTED



TYPICAL ASSEMBLY OF CONTACT SWITCH ON HOUSING

Fig. 29 Heavy store release connections at bomb station No. 3
RESTRICTED

This file was downloaded
from the RTFM Library.

Link: www.scottbouch.com/rtfm

Please see site for usage terms,
and more aircraft documents.

