

**Group 4 LOCATION DIAGRAMS**

**LIST OF ILLUSTRATIONS**

	<i>Fig.</i>		<i>Fig.</i>		<i>Fig.</i>
<i>Location of equipment</i> ....	1	<i>A.R.I.5874 aerial installation (pre-Mod.</i>		<i>A.R.I.18064 (post Mod. 2750) and A.R.I.</i>	
<i>Equipment at crew stations</i> ....	2	<i>2690)</i> ....	5	<i>18124 (Mod. 2437) aerals</i> ....	6A▶
<i>Equipment in cockpit</i> ....	3	◀ <i>A.R.I.18064 aerial installation (pre-Mod.</i>		<i>A.R.I.18011, I.L.S. aerals</i> ....	7
<i>Equipment above nosewheel bay</i> ....	4	<i>2750)</i> ....	6	<i>A.R.I.5874 aerial installation (post-Mod.</i>	
				<i>2690)</i> ....	8

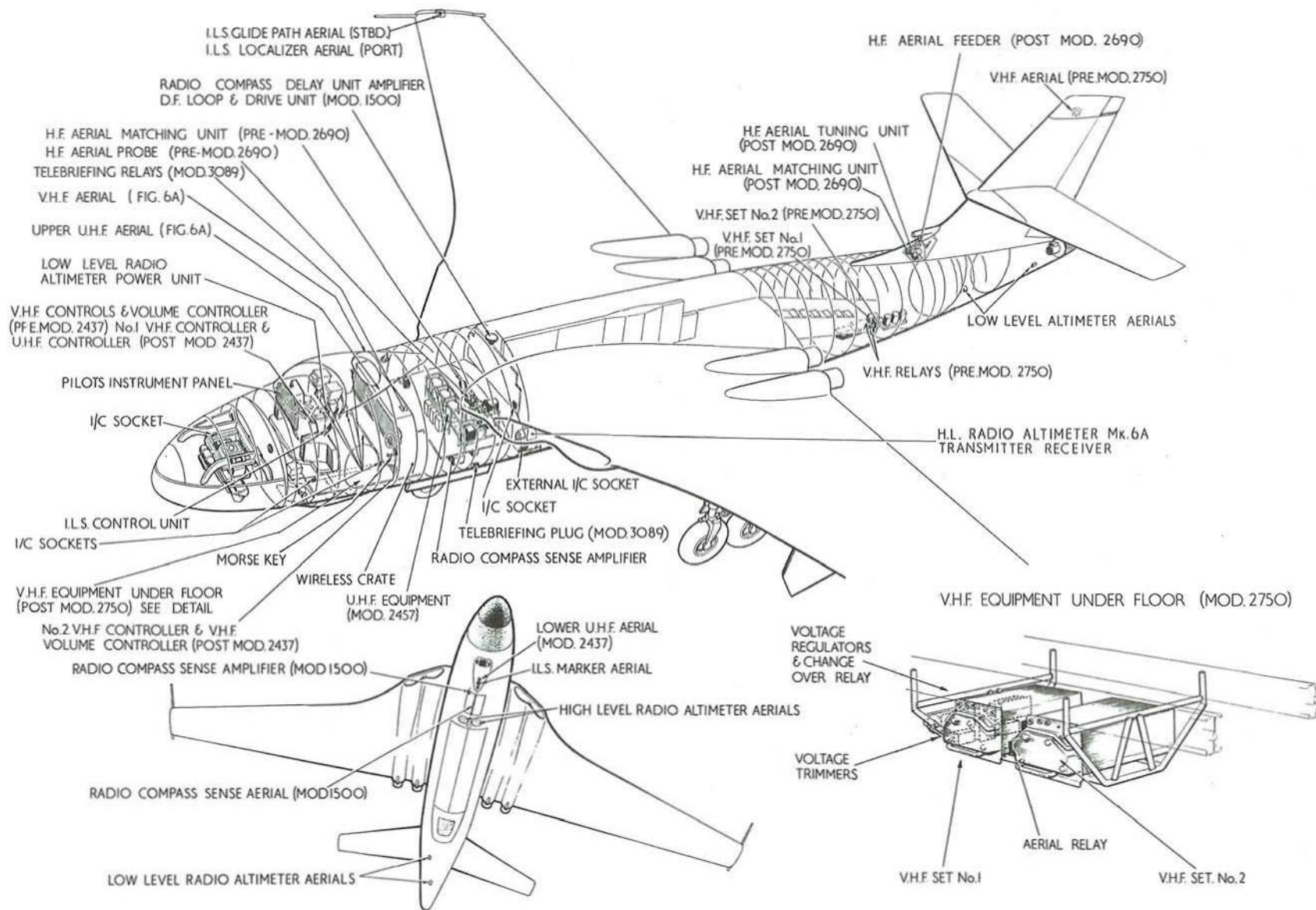


Fig.1 Location of equipment.

RESTRICTED

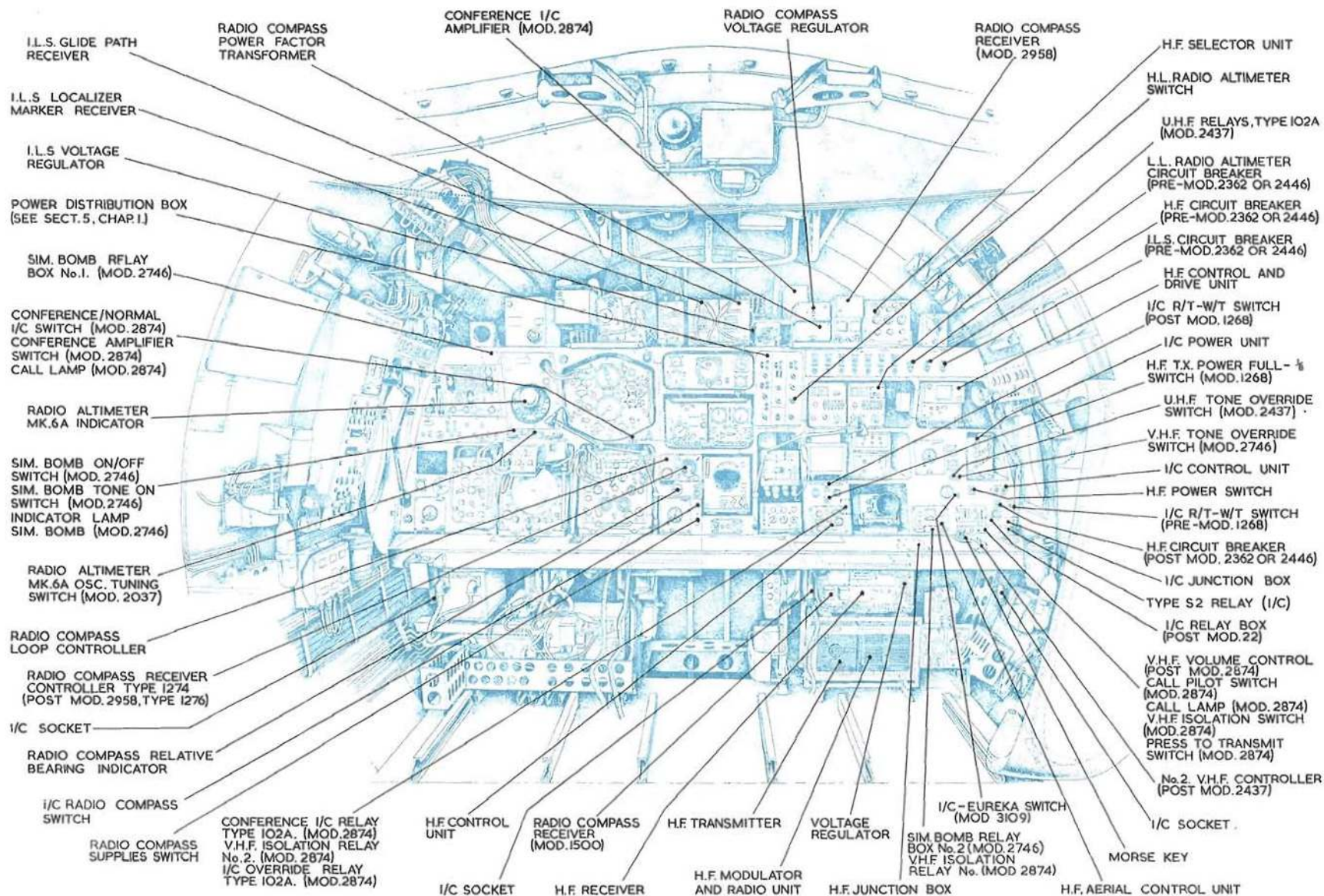


Fig.2. Equipment at crew stations

RESTRICTED

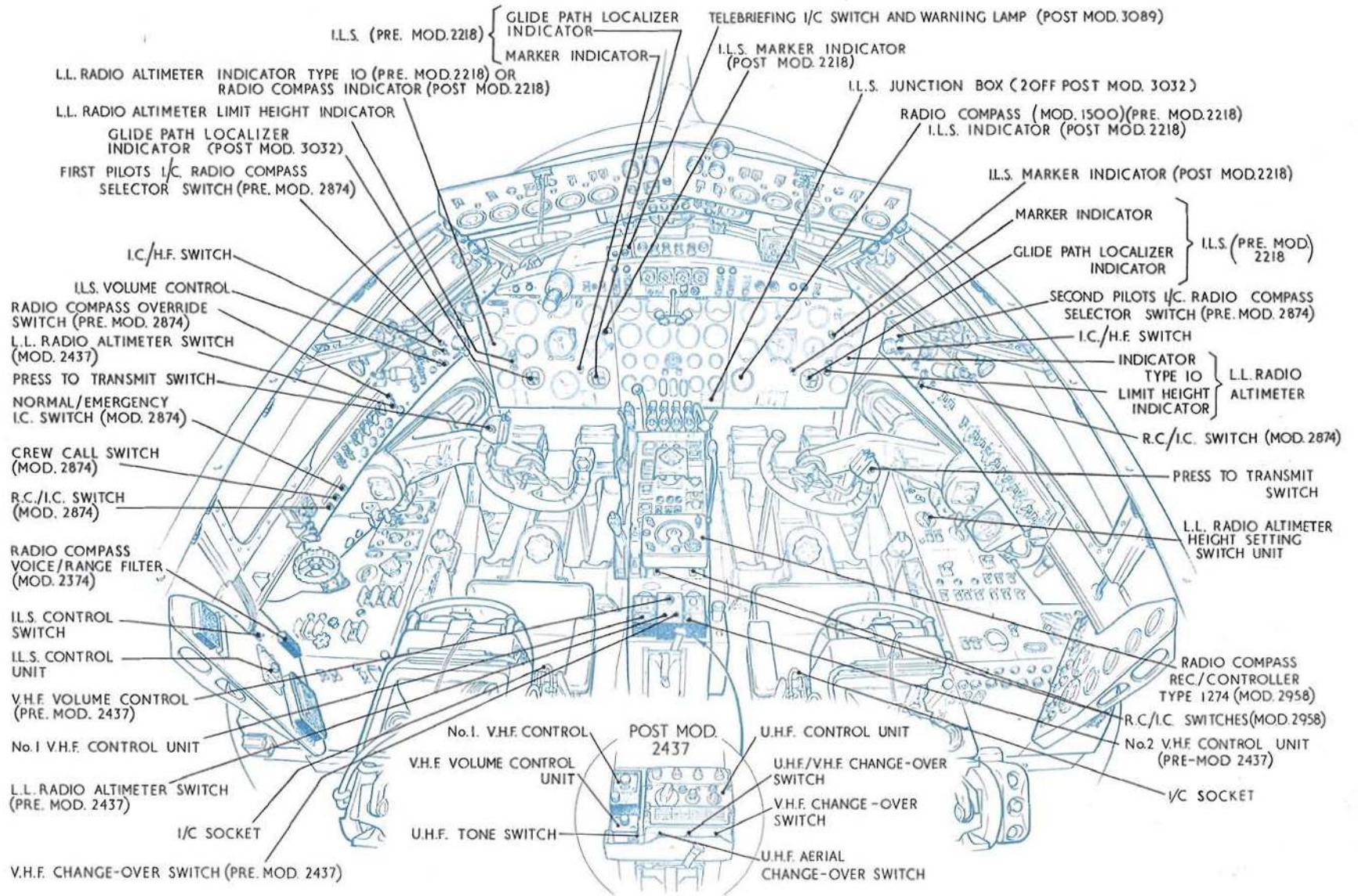


Fig.3. Equipment in cockpit RESTRICTED

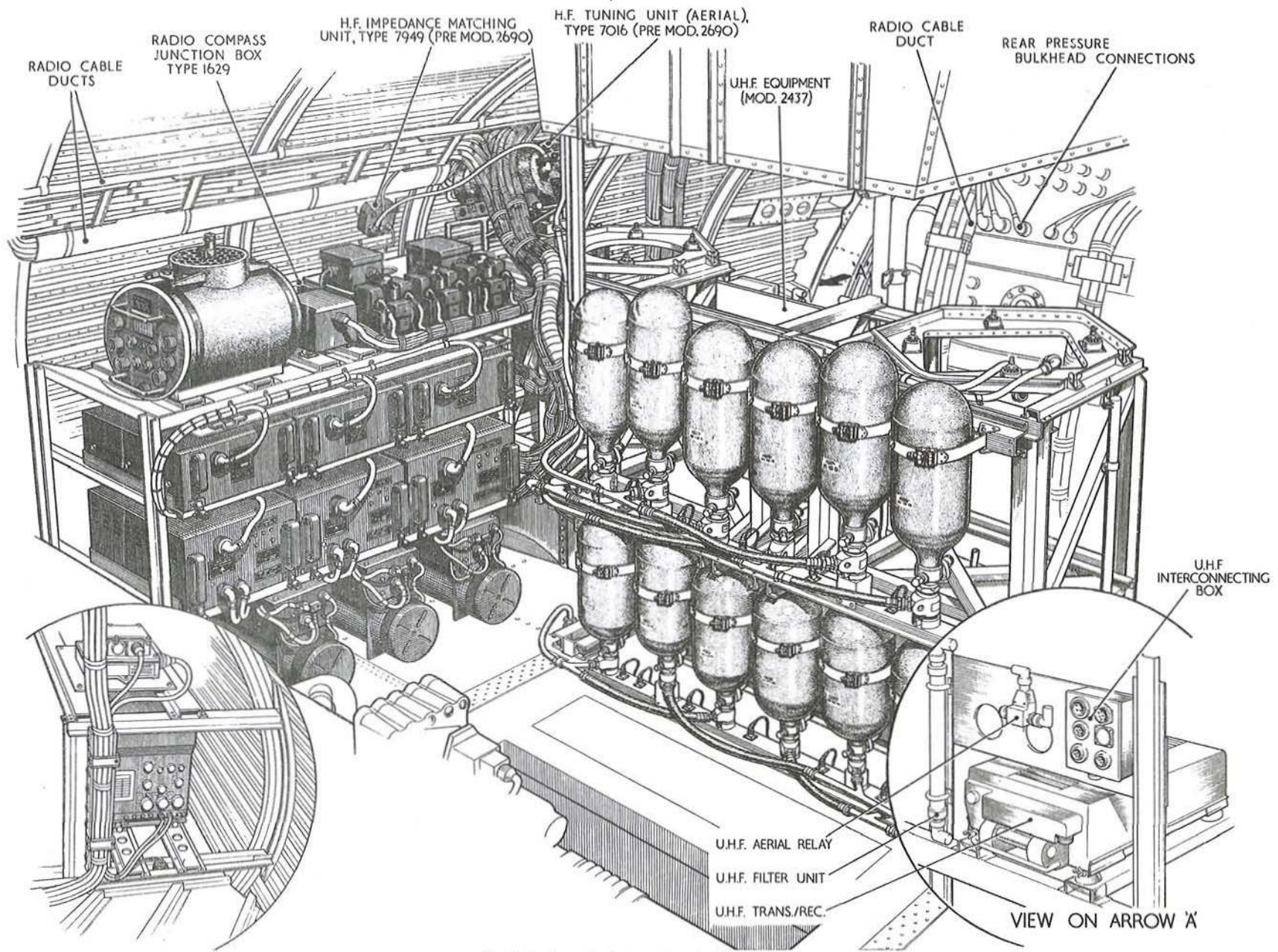


Fig.4. Equipment above nosewheel bay  
RESTRICTED

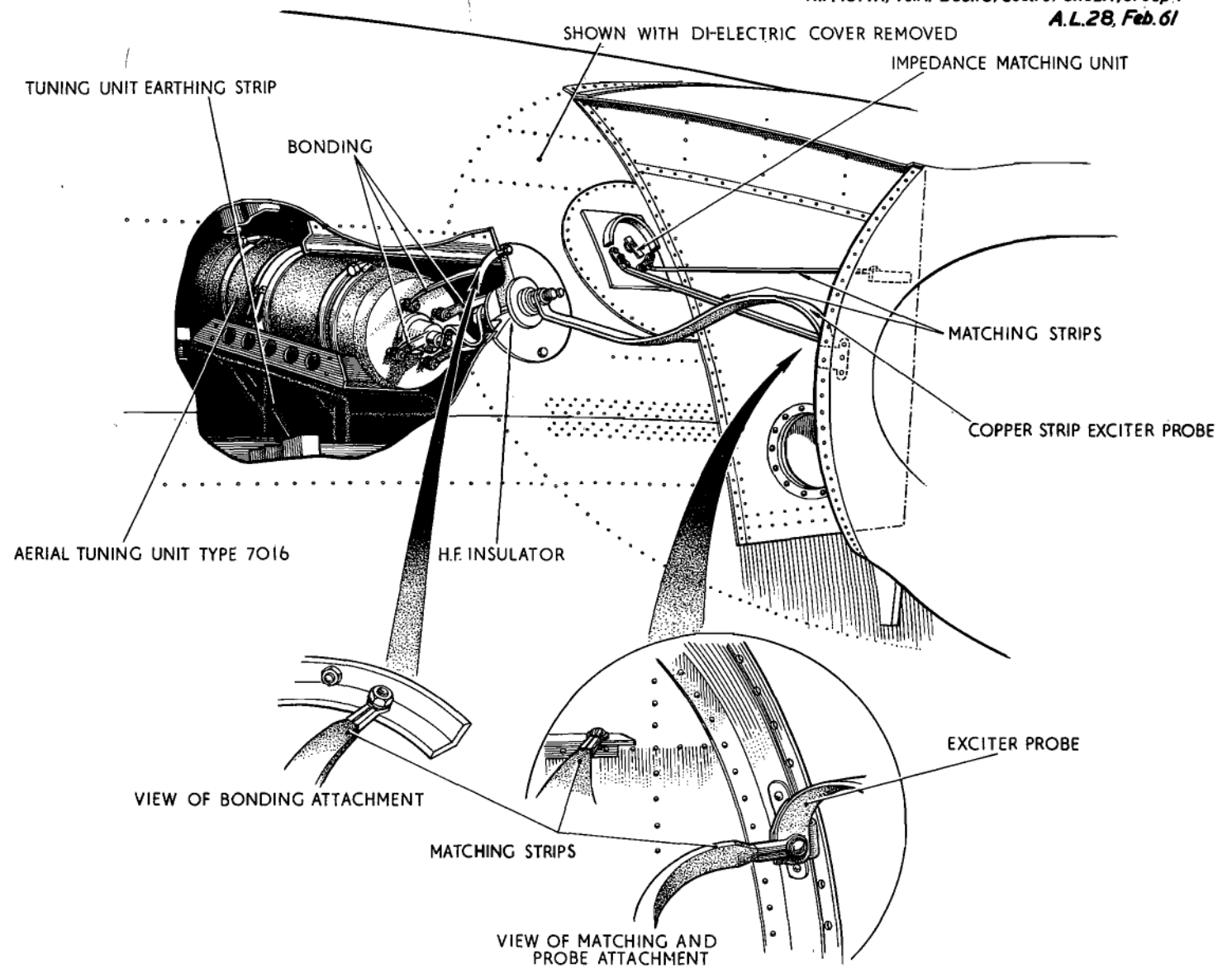


Fig.5 A.R.I. 5874 Aerial installation ( Pre mod 2690)

RESTRICTED

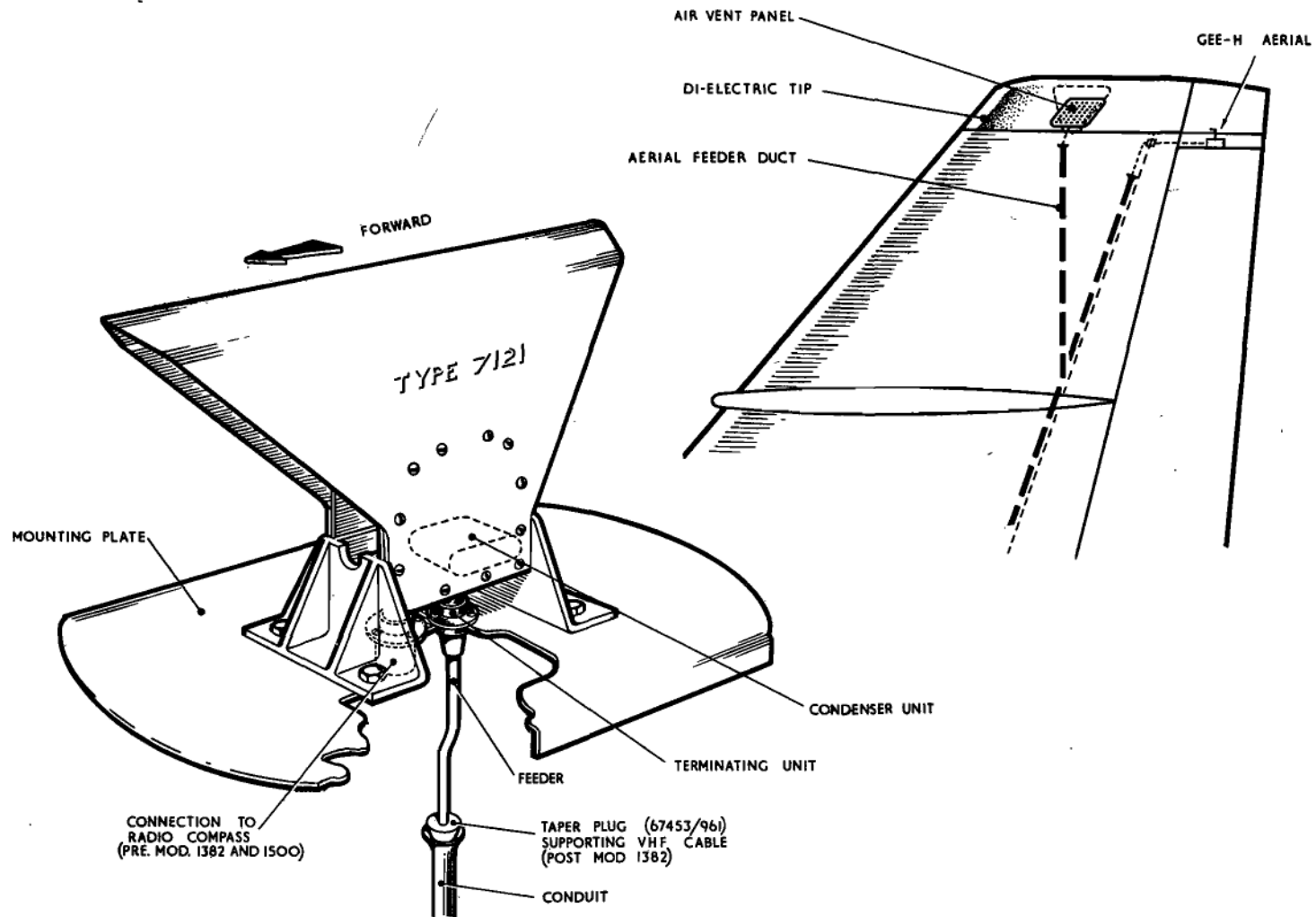


Fig.6. ARI.18064 Aerial installation (pre Mod 2750)

RESTRICTED

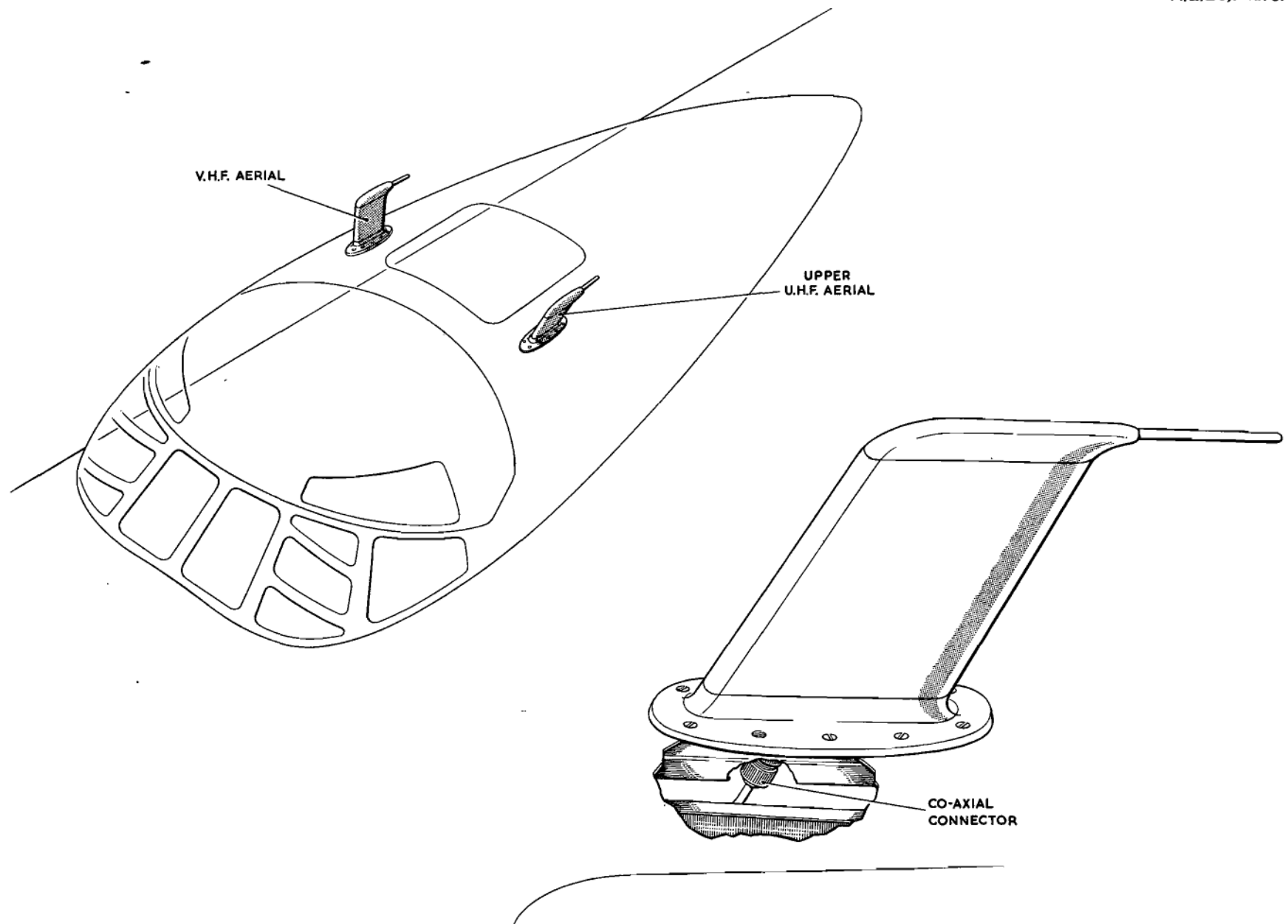


Fig. 6A ARJ. 18064 (mod.2750) and ARJ. 18124 (mod.2437) aerials

RESTRICTED

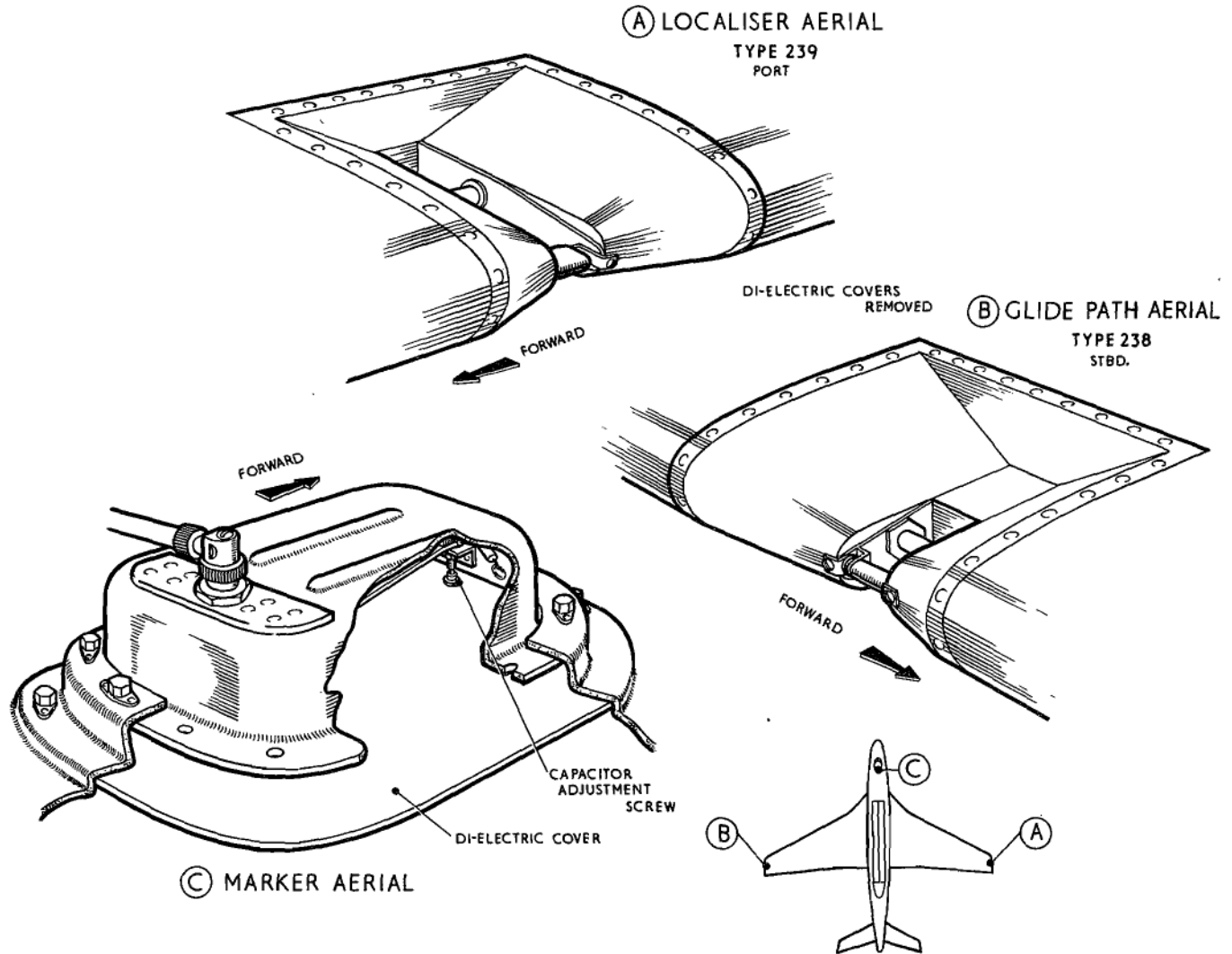


Fig.7 ARI. I80II.I.L.S. Aerials  
RESTRICTED

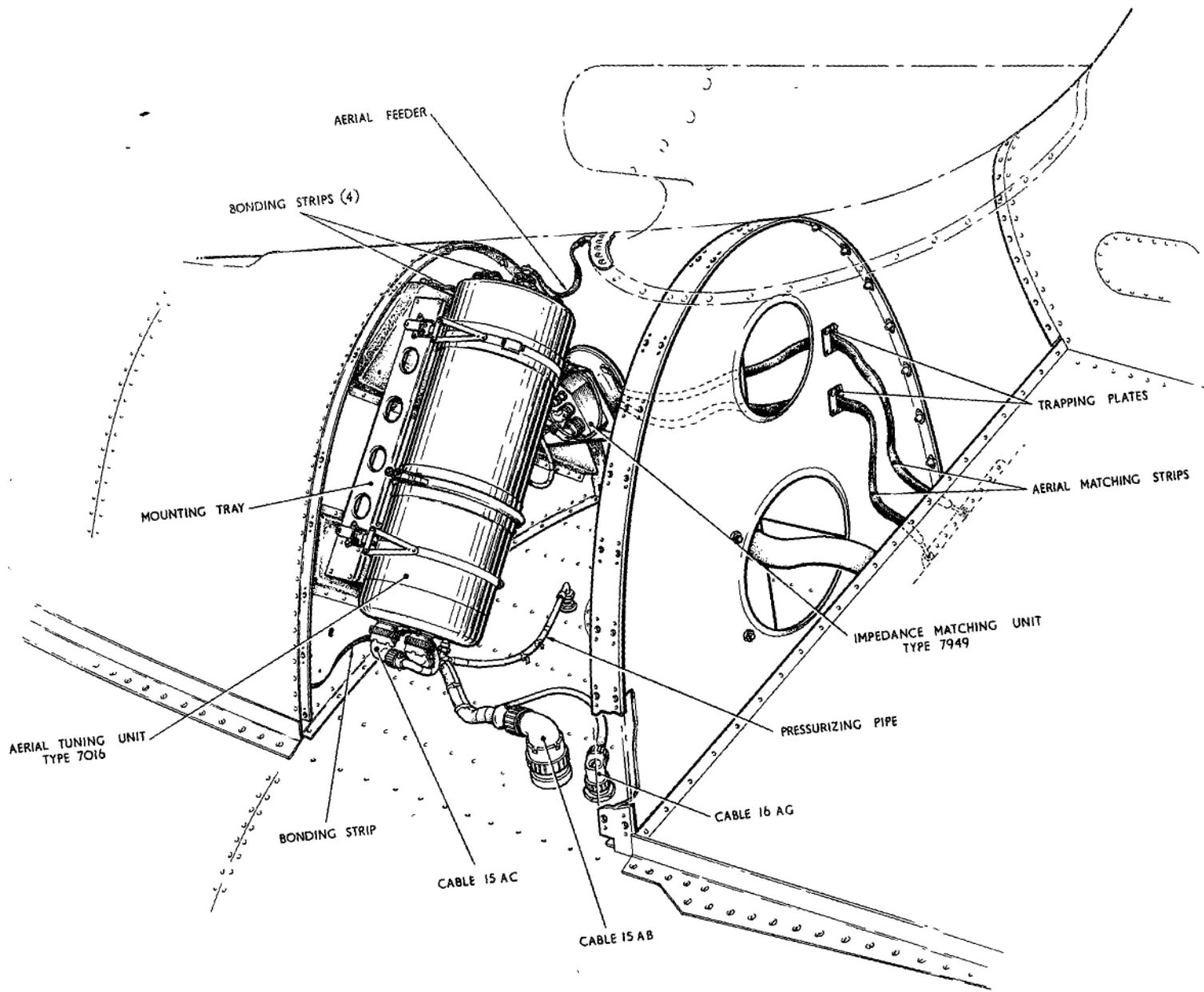


Fig. 8 ARI.5874 Aerial installation (post Mod.2690)  
 RESTRICTED

This file was downloaded  
from the RTFM Library.

Link: [www.scottbouch.com/rtfm](http://www.scottbouch.com/rtfm)

Please see site for usage terms,  
and more aircraft documents.

