

Group 3 LOCATION DIAGRAMS

LIST OF ILLUSTRATIONS

	Fig.		Fig.
<i>Location of equipment</i>	1	<i>A.R.I.5851 or A.R.I.5871 equipment</i> ...	5
<i>Equipment in cockpit</i>	2	<i>A.R.I.5800 scanner removal</i>	6
<i>Equipment at crew stations</i>	3	◀ <i>Equipment at crew stations (Mod. 3165</i>	
<i>Equipment on radar crate</i>	4	<i>and 3166)</i>	7 ▶

RESTRICTED

KEY TO FIG. 1 (location of equipment)

- | | | | |
|----|---|----|--|
| 1 | TAIL WARNING JUNCTION BOX TYPE 4709 | 27 | EUREKA Mk. 10 TRANSMITTER/RECEIVER (MOD. 2741) |
| 2 | I.F.F. AERIAL | 28 | EUREKA Mk. 10 FILTER UNIT (MOD. 2741) |
| 3 | TYPE 153 INVERTER AND CONTROL PANELS FOR A.R.I.5851 OR A.R.I.5871 | 29 | EUREKA Mk. 10 AERIAL CHANGE-OVER RELAY (MOD. 2741) |
| 4 | COLLINS D.F. SYSTEM CONTROL AMPLIFIER (MOD. 3166) | 30 | A.R.I.5851 OR 5871 TRANSMITTER/RECEIVER |
| 5 | RADAR CRATE | 31 | A.R.I.5851 OR 5871 TRACKING UNIT |
| 6 | I.F.F. CODER UNIT (MOD. 2403) | 32 | A.R.I.5851 OR 5871 AERIAL SYSTEM |
| 7 | I.F.F. AERIAL (PRE MOD. 1793) | 33 | T.A.C.A.N. AERIAL (MOD. 3165) |
| 8 | TAIL WARNING JUNCTION BOX TYPE 398 | 34 | I.F.F. AERIAL |
| 9 | TAIL WARNING JUNCTION BOX TYPE 4709 | 35 | I.F.F. AERIAL SWITCH UNIT |
| 10 | TAIL WARNING WAVE-FORM GENERATOR | 36 | I.F.F. RECEIVER/TRANSMITTER |
| 11 | COLLINS D.F. SYSTEM LOOP AERIAL (MOD. 3166) | 37 | I.F.F. ALTITUDE SWITCH AND RELAY |
| 12 | T.A.C.A.N. AERIAL (MOD. 3166) | 38 | I.F.F. AERIAL CHANGE-OVER SWITCH (GROUND TEST) |
| 13 | T.A.C.A.N. TRANSMITTER/RECEIVER (MOD. 3166) | 39 | U.H.F./D.F. JUNCTION BOX (MOD. 3166) |
| 14 | T.A.C.A.N. PHASE CORRECTION UNIT (MOD. 3166) | 40 | COLLINS D.F. SYSTEM BEARING INDICATOR (MOD. 3166) |
| 15 | T.A.C.A.N. COUPLING UNIT (MOD. 3166) | 41 | VISOR STOWAGE FOR TAIL WARNING INDICATOR |
| 16 | T.A.C.A.N. JUNCTION BOX (MOD. 3166) | 42 | T.A.C.A.N. CONTROL UNIT (MOD. 3165 OR 3166) |
| 17 | T.A.C.A.N. COUPLING UNIT (MOD. 3165) | 43 | T.A.C.A.N. INDICATOR (MOD. 3165 OR 3166) |
| 18 | T.A.C.A.N. PHASE CORRECTION UNIT (MOD. 3165) | 44 | TAIL WARNING CONTROL UNITS |
| 19 | T.A.C.A.N. TRANSMITTER/RECEIVER (MOD. 3165) | 45 | PLUGS AND SOCKETS ON FORWARD BULKHEAD |
| 20 | EUREKA Mk. 10 UPPER AERIAL (MOD. 2741) | 46 | H.2.S. RADAR SCANNING UNIT (SEE SECT. 5, CHAP. 7) |
| 21 | GEE-H. AERIAL (PRE MOD. 3165 or 3166) | 47 | TAIL WARNING INDICATOR (PRE MOD. 3181) |
| 22 | TAIL WARNING TRANSMITTER/RECEIVER UNIT | 48 | T.A.C.A.N. INDICATOR (MOD. 3165 OR 3166) |
| 23 | TAIL WARNING SCANNER | 49 | EQUIPMENT ON RADIO CRATE (FIG. 3) |
| 24 | EUREKA Mk. 10 LOWER AERIAL (MOD. 2741) | | |
| 25 | EUREKA Mk. 10 CODER TRANSPONDER (MOD. 2741) | | |
| 26 | EUREKA Mk. 10 in FLIGHT MONITOR (MOD. 2741) | | |

RESTRICTED

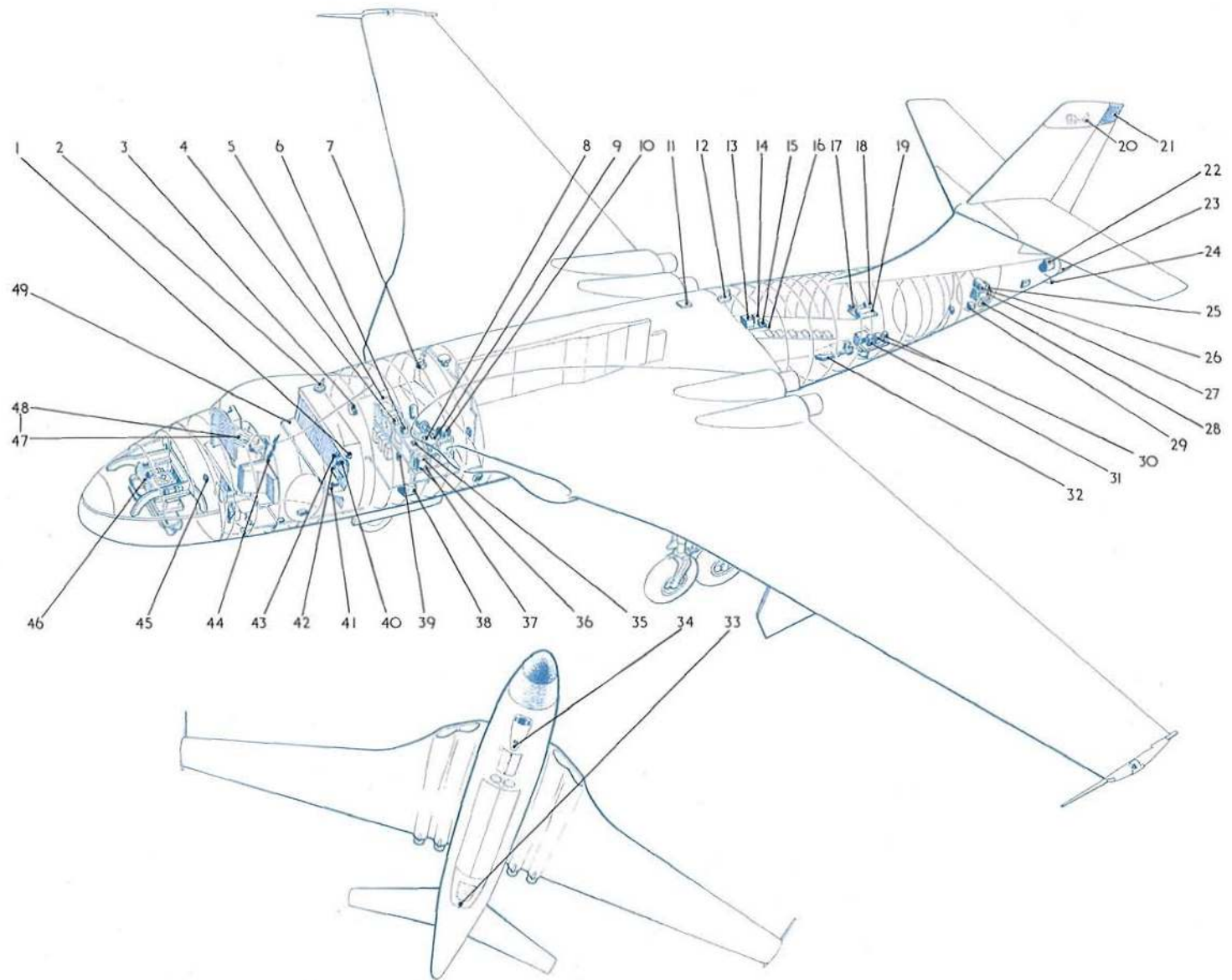


Fig.1 Location of equipment

RESTRICTED

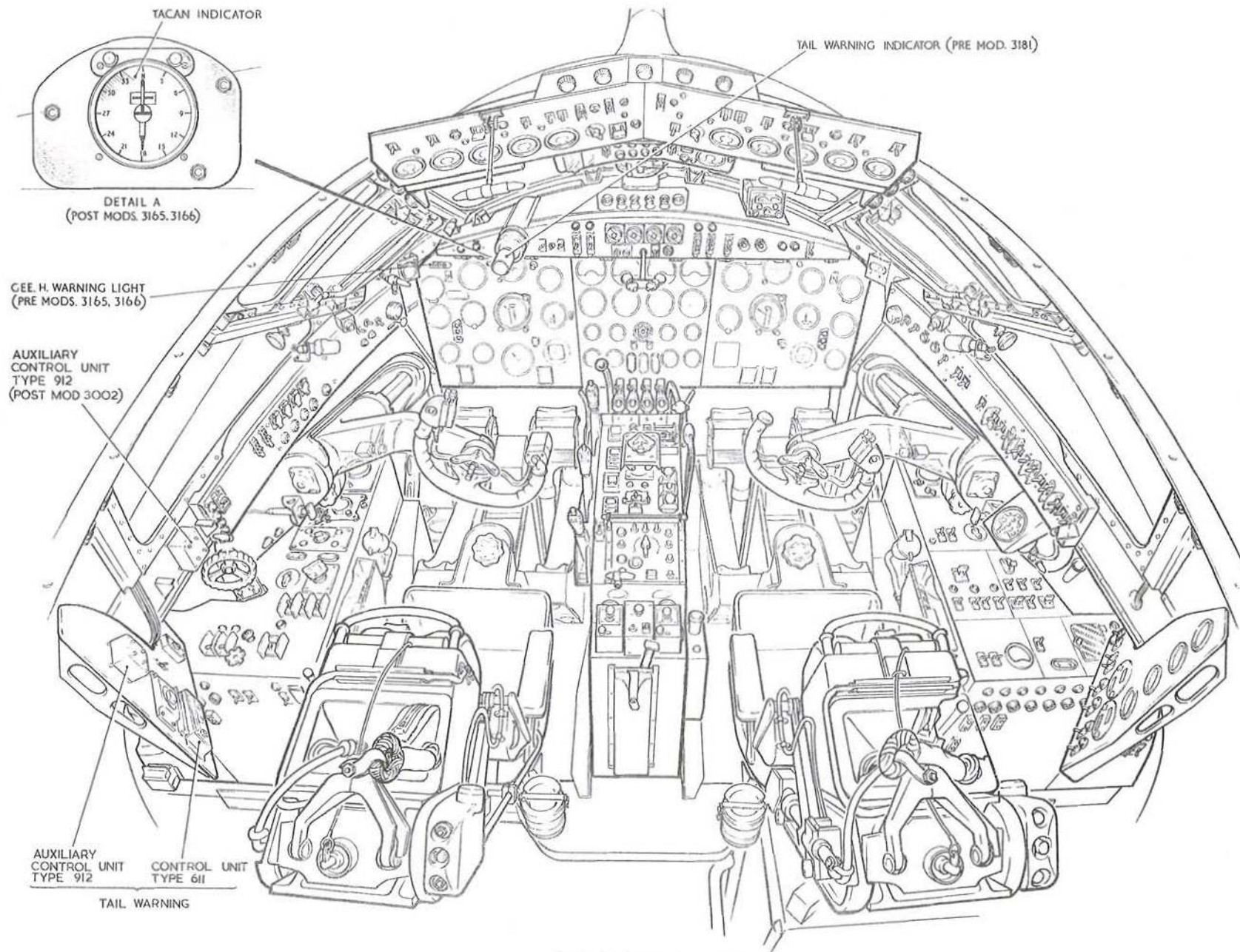


Fig. 2 Equipment in cockpit
RESTRICTED

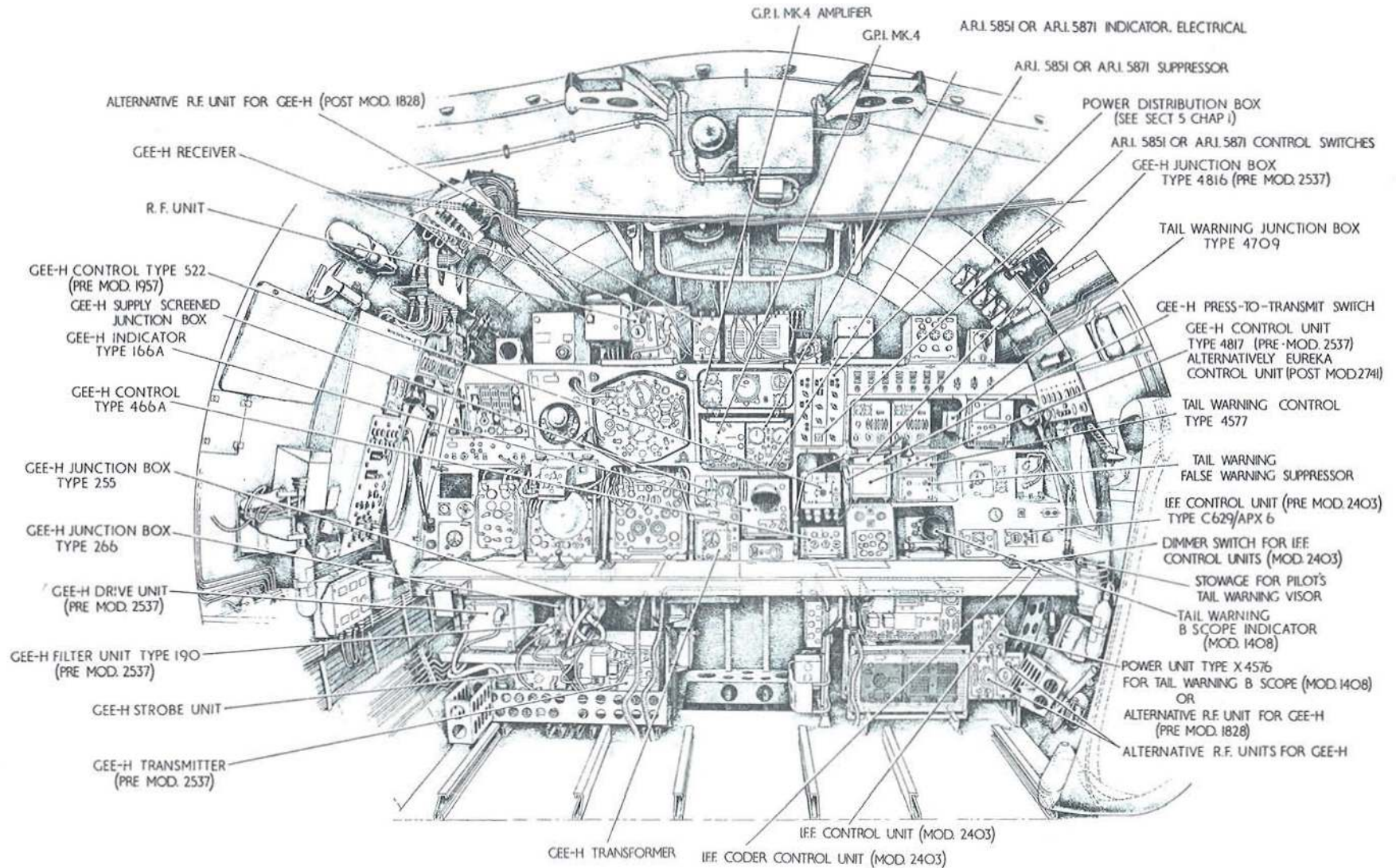


Fig. 3 Equipment at crew stations (pre Mod. 3165 or 3166)

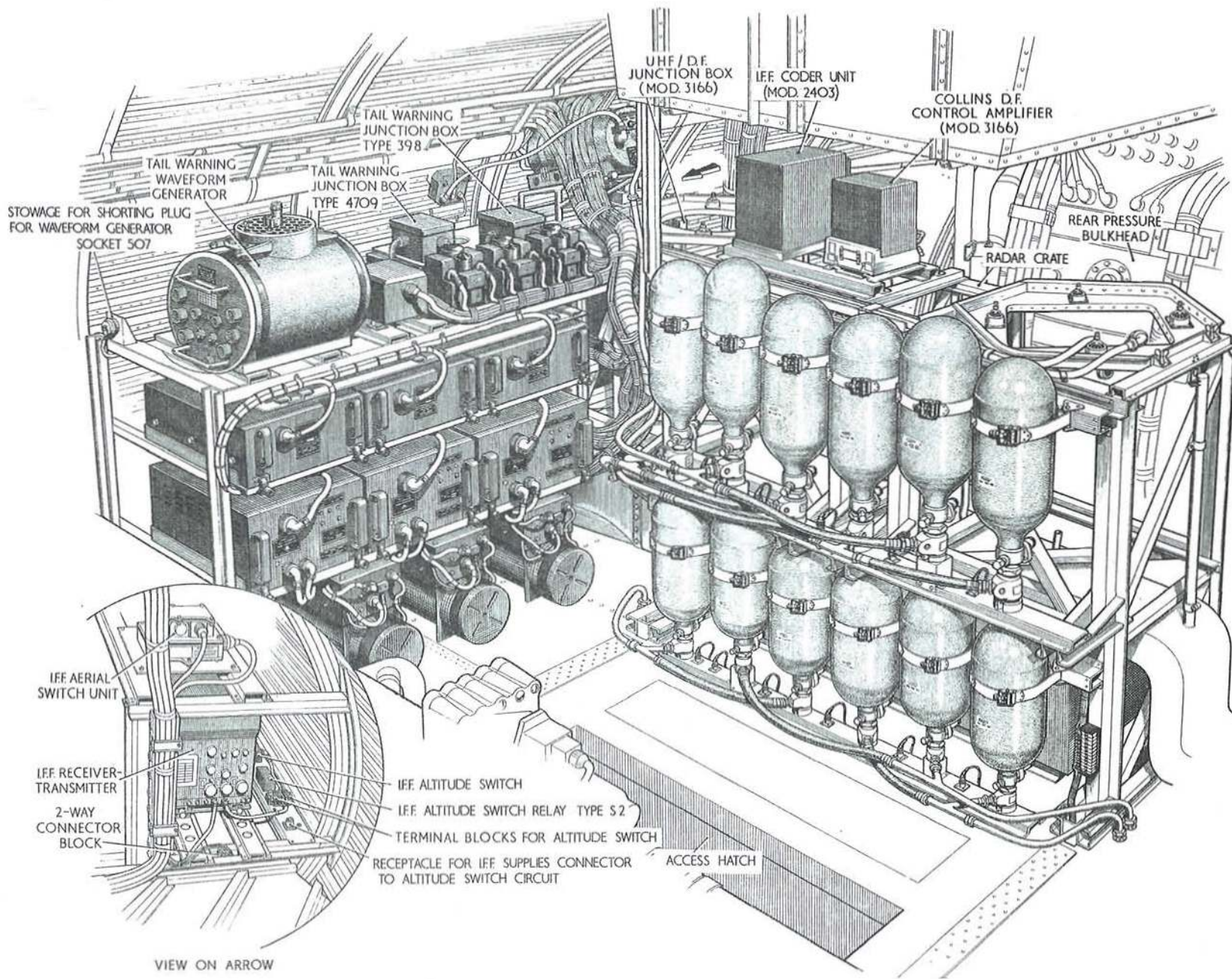


Fig 4. Equipment on radar crate

RESTRICTED

Key to fig. 5 (A.R.I.5851 or A.R.I.5871 equipment)

- | | | | |
|----------|---|-----------|---|
| 1 | AERIAL ALIGNMENT DATUM PAD SECURING SCREWS (3 to each pedestal) | 10 | BOMB BAY DEFLECTOR SHOWN WITH DIELECTRIC SCREEN REMOVED |
| 2 | AERIAL ALIGNMENT DATUM HOLE FOR ATTACHING ALIGNMENT JIG | 11 | WAVEGUIDE LOWER PROTECTION GUARD |
| 3 | REAR DATUM PAD | 12 | WAVEGUIDE UPPER PROTECTION GUARD |
| 4 | REAR DATUM PEDESTAL | 13 | WAVEGUIDE |
| 5 | AERIAL SYSTEM | 14 | TEST CONNECTIONS |
| 6 | AERIAL SYSTEM DOWEL STUDS (2 star-board, 1 port) | 15 | TRANSMITTER-RECEIVER UNIT |
| 7 | FORWARD DATUM PAD | 16 | TRACKING UNIT |
| 8 | FORWARD DATUM PEDESTAL | 17 | COOLING FAN |
| 9 | MOUNTING AND ANCHOR NUTS FOR DIELECTRIC SCREEN | 18 | MOUNTING TRAYS |
| | | 19 | SECURING PIN |
| | | 20 | WAVEGUIDE PROTECTION GUARDS SUPPORT STRUTS |

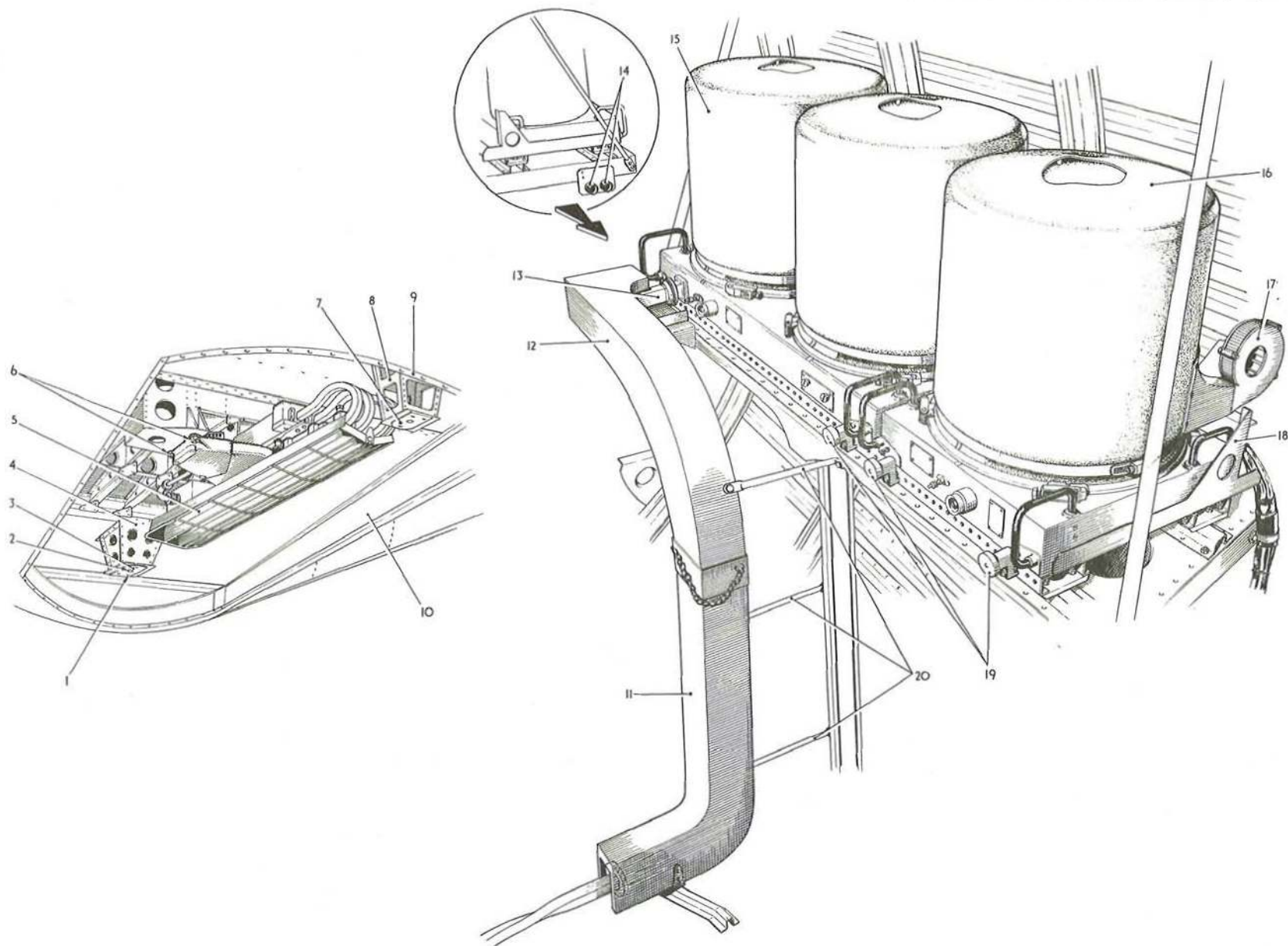


Fig.5 A.R.I. 5851 or A.R.I. 5871 equipment

RESTRICTED

(A.L. 11, Nov. 59)

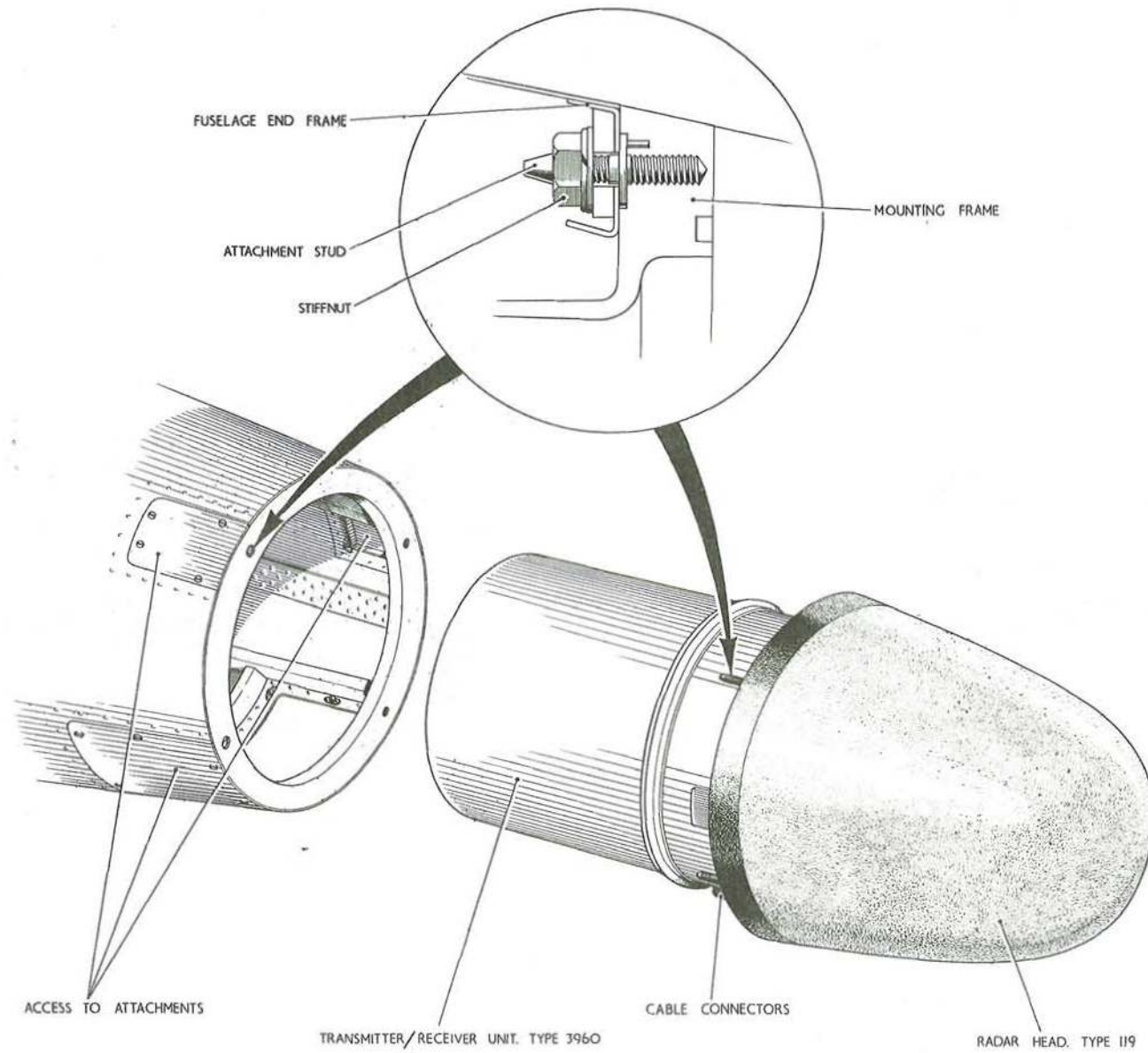


Fig. 6 A.R.I. 5800 scanner unit
RESTRICTED

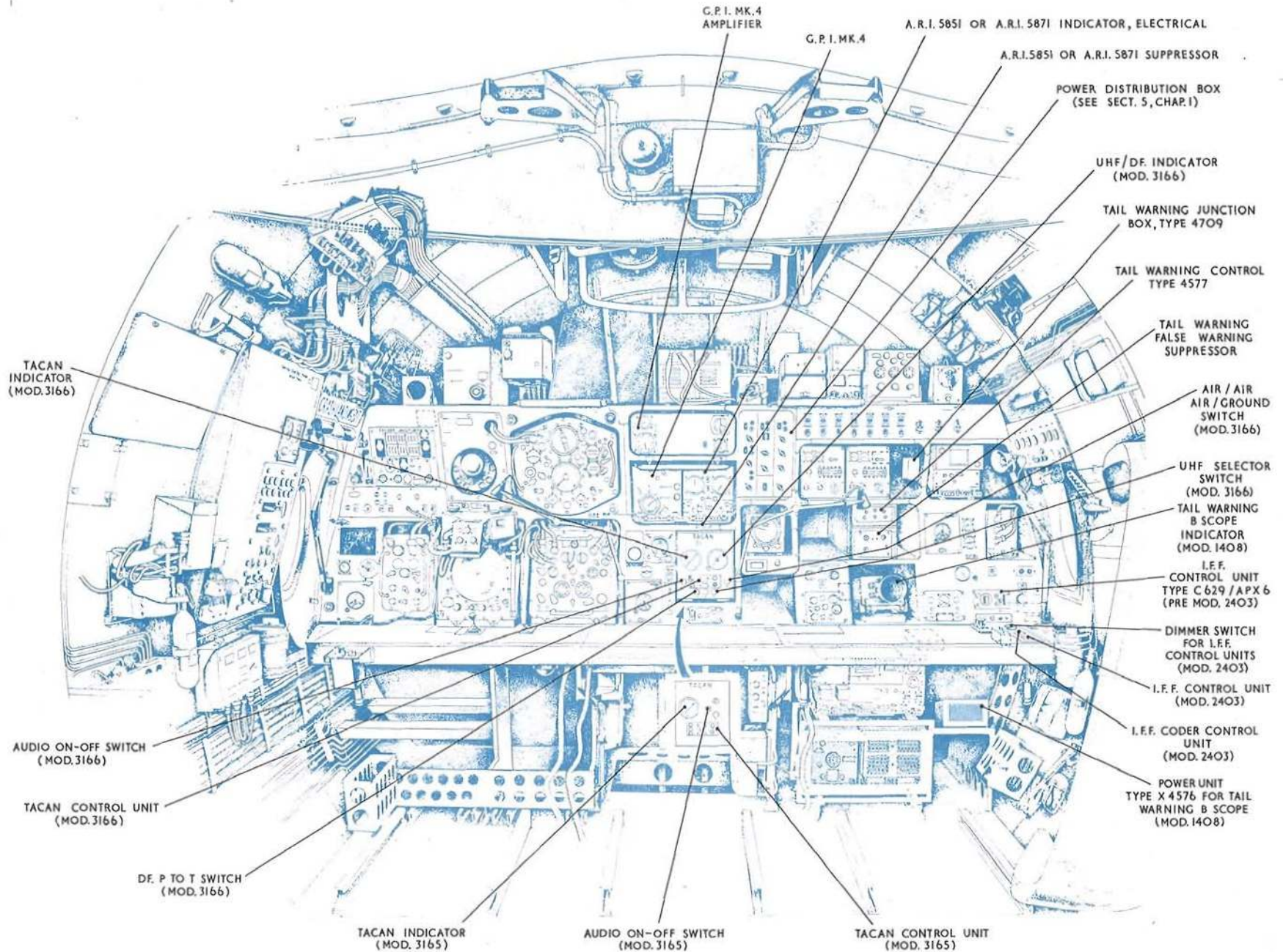
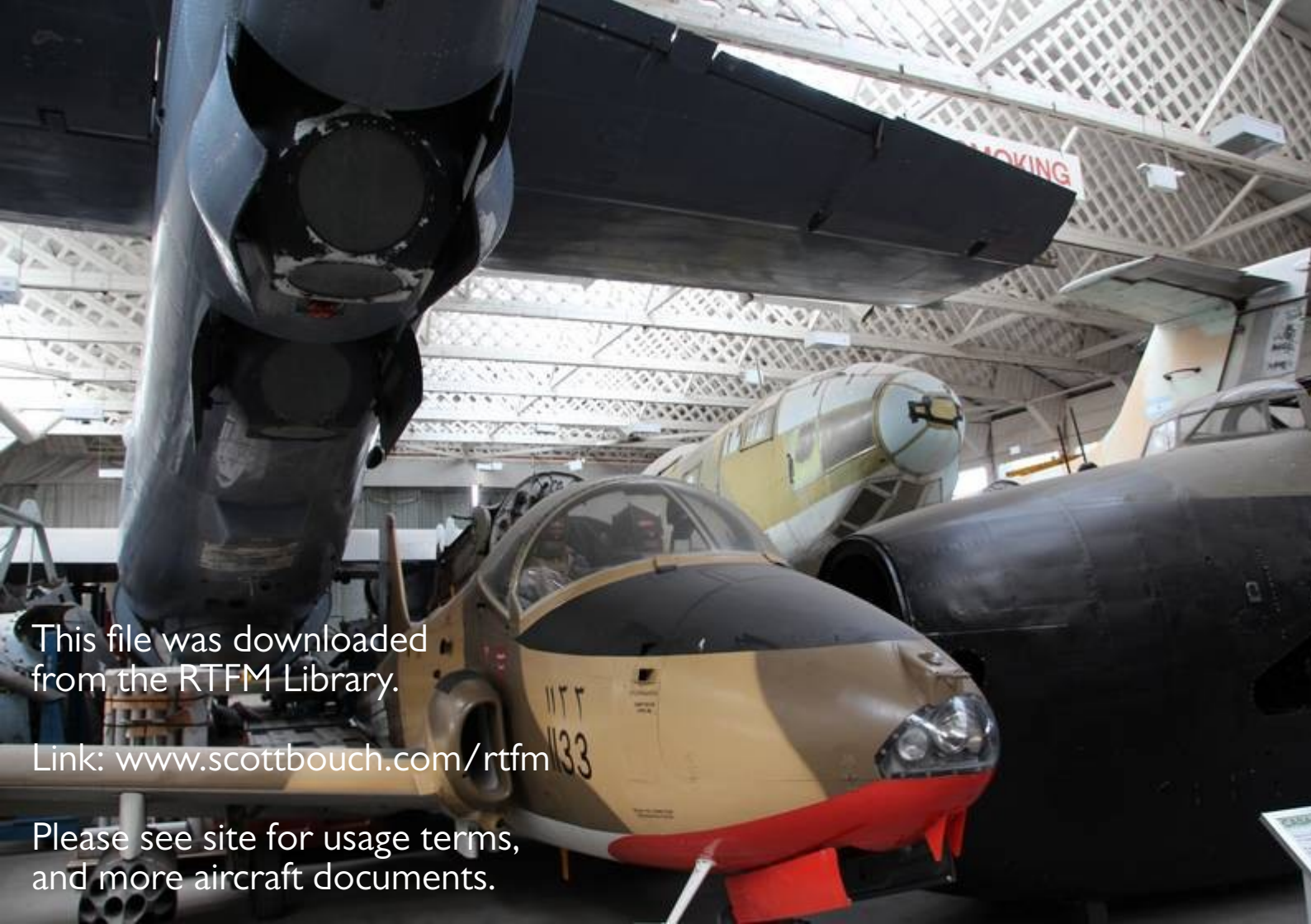


Fig. 7. Equipment at crew stations (Mod. 3165, 3166)

RESTRICTED



This file was downloaded
from the RTFM Library.

Link: www.scottbouch.com/rtfm

Please see site for usage terms,
and more aircraft documents.