

RESTRICTED
(FOR OFFICIAL USE ONLY)

AIR PUBLICATION 4505C

VOL 3, PART 1

MARCH, 1963

1st EDITION

VULCAN B.MK.IA AIRCRAFT

SCHEDULE OF
SPARE PARTS

AIR MINISTRY

RESTRICTED

AIR MINISTRY

AMENDMENT LIST No. 1
TO
AIR PUBLICATION No. 4505C.
VOLUME 3, PART 1,
SCHEDULE OF SPARE PARTS
1st Edition Published March 1963
(Complete in 82 Sheets)
Date of Issue: January 1964

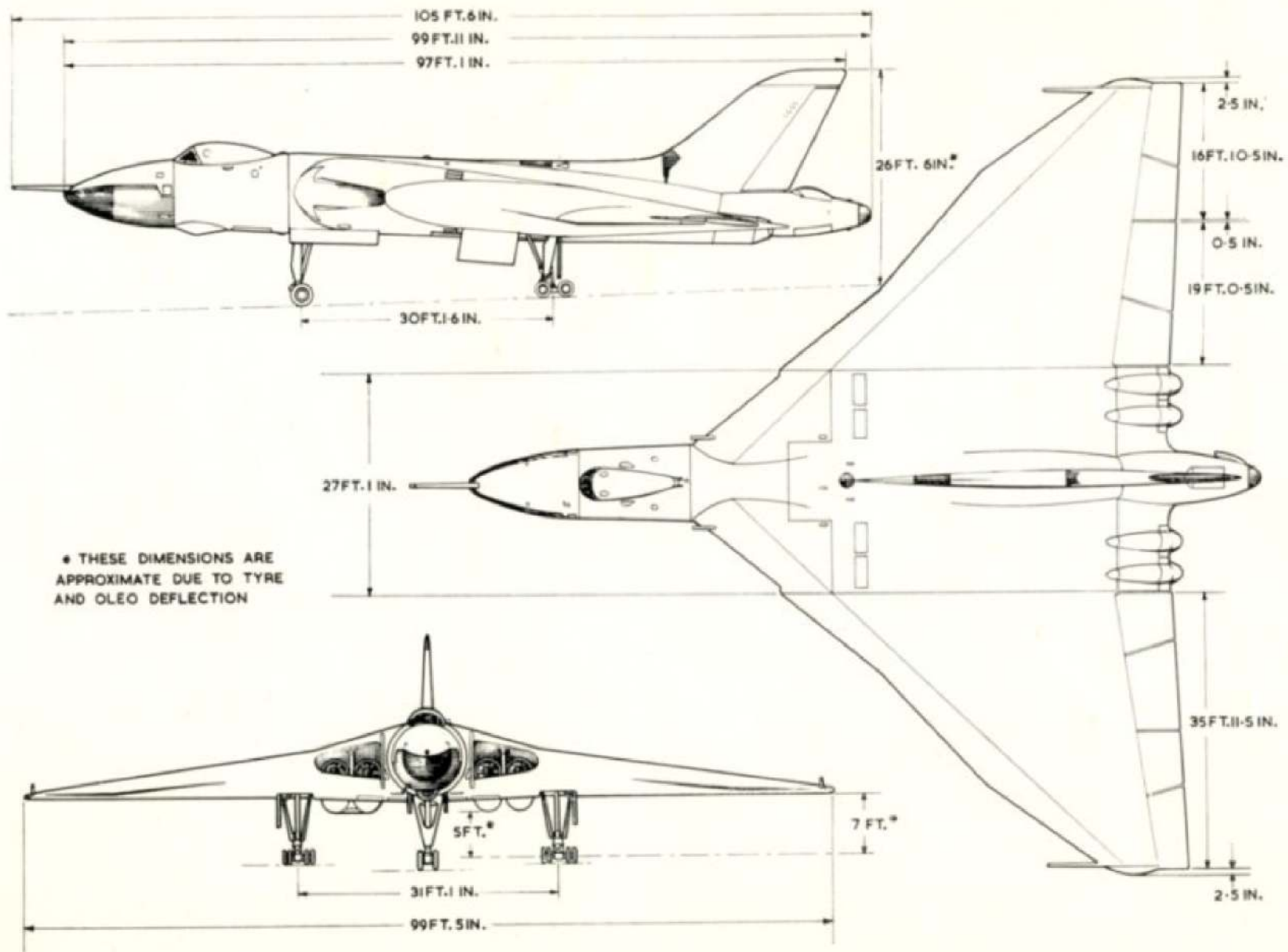
VULCAN MK. IA.

CANCEL PAGES NUMBERED :—~~AA. 11, AA. 12, AA. 13, AA. 14, AA. 19, AA. 20, AA. 23, AA. 24, AA. 25, AA. 26, AA. 29 to AA. 34, AA. 37, AA. 38, AA. 39, AA. 40, AA. 43 to AA. 62, AC. 1, AC. 2, EG. 5, EG. 6, EG. 7, EG. 8, EG. 11, EG. 12, EG. 13, EG. 14, EG. 19, EG. 20, EG. 21, EG. 22, Plate E. 9, Plate E. 10, FE. 1, FE. 2, FE. 5, FE. 6, FE. 9, FE. 10, FE. 13, FE. 14, GF. 27, GF. 28, JA. 3, JA. 4, JA. 7 to JA. 26, JA. 31, JA. 32, JA. 35, JA. 36, JA. 39, JA. 40, JA. 47 to JA. 50, MC. 5, MC. 6, QV. 1 to QV. 6, Plate Q. 59, SA. 1, SA. 2, W. 9 to W. 14, W. 17, W. 18, W. 61, W. 62, W. 65 to W. 80, W. 83, W. 84, W. 87, W. 88, W. 123 to W. 128, W. 131, W. 132, W. 137, W. 138, W. 141, W. 142, W. 147, W. 148, W. 151, W. 152, W. 153, W. 154, X. 3, X. 4, X. 5, X. 6.~~

INSERT THE FOLLOWING NEW PAGES ISSUED HERewith IN PAGE NUMBER ORDER :—~~AA. 11, AA. 12, AA. 13, AA. 14, AA. 19, AA. 20, AA. 23, AA. 24, AA. 25, AA. 26, AA. 29 to AA. 34, AA. 37, AA. 38, AA. 39, AA. 40, AA. 43 to AA. 62, AC. 1, AC. 2, EG. 5, EG. 6, EG. 7, EG. 8, EG. 11, EG. 12, EG. 13, EG. 14, EG. 19, EG. 20, EG. 21, EG. 22, Plate E. 9, Plate E. 10, FE. 1, FE. 2, FE. 5, FE. 6, FE. 9, FE. 10, FE. 13, FE. 14, GF. 27, GF. 28, JA. 3, JA. 4, JA. 7 to JA. 26, JA. 31, JA. 32, JA. 35, JA. 36, JA. 39, JA. 40, JA. 47 to JA. 50, MC. 5, MC. 6, QV. 1 to QV. 4, Plate Q. 59, SA. 1, SA. 2, W. 9 to W. 14, W. 17, W. 18, W. 61, W. 62, W. 65 to W. 80, W. 83, W. 84, W. 87, W. 88, W. 123 to W. 128, W. 131, W. 132, W. 137, W. 138, W. 141, W. 142, W. 147, W. 148, W. 151, W. 152, W. 153, W. 154, X. 3, X. 4, X. 5, X. 6.~~

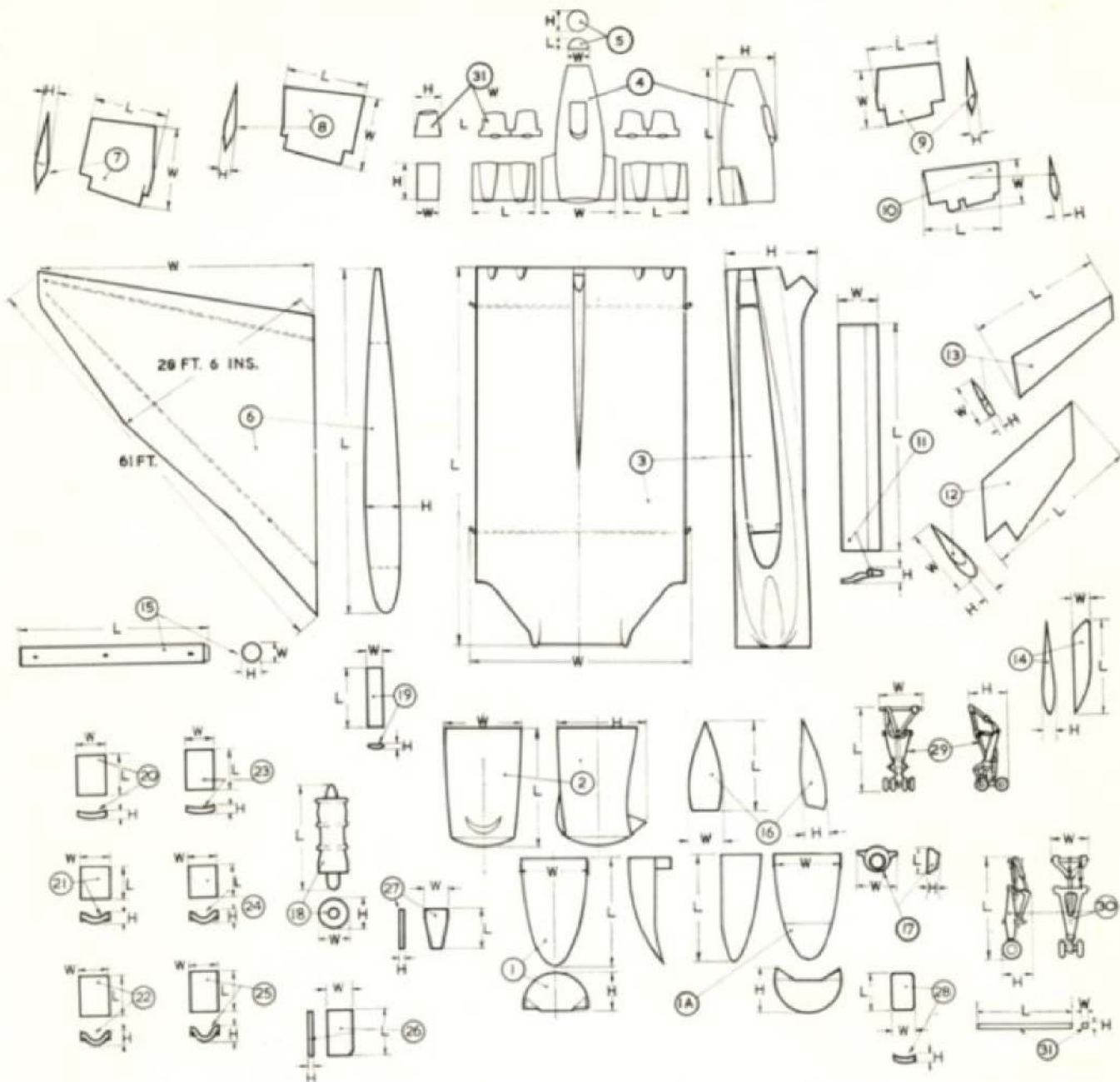
*Revised
15/11/64
JLH*

RESTRICTED



* THESE DIMENSIONS ARE APPROXIMATE DUE TO TYRE AND OLEO DEFLECTION

VULCAN B. MK. 1A. GENERAL ARRANGEMENT
RESTRICTED

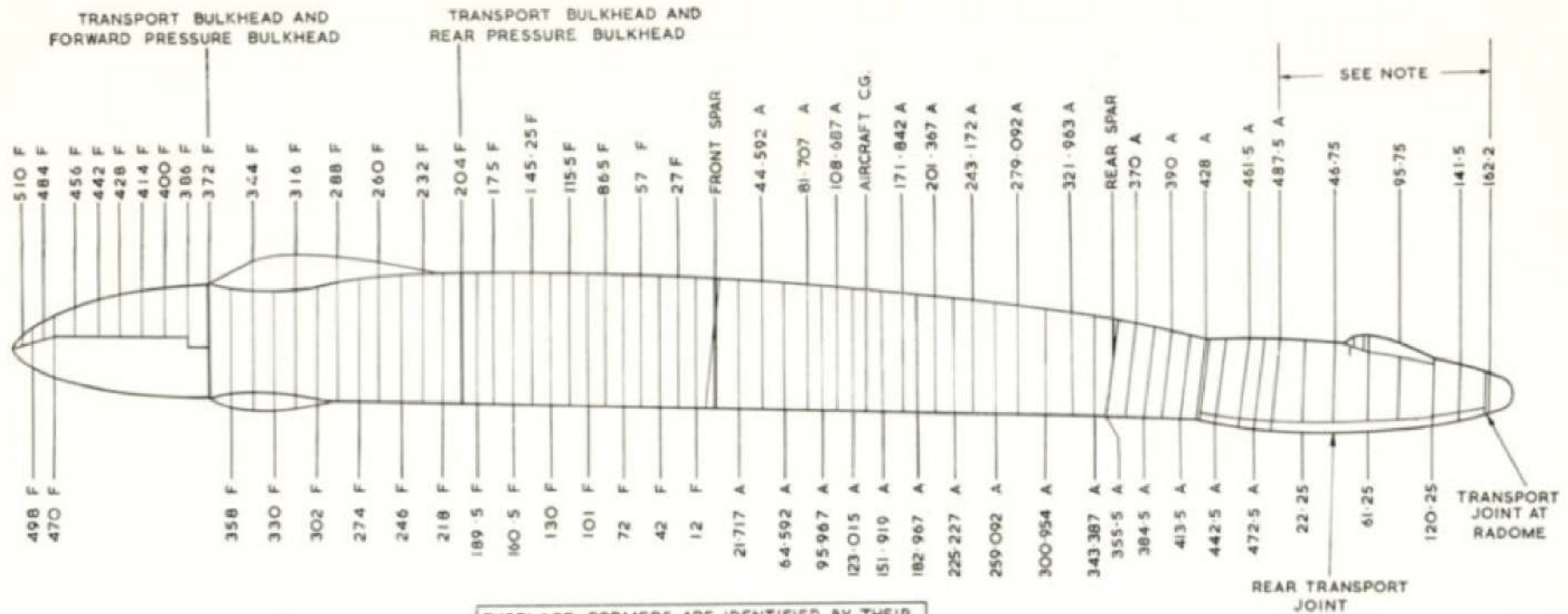


VULCAN B. MK. IA PACKING DIMENSIONS

DIMENSIONS IN FT. L - LENGTH W - WIDTH H - HEIGHT

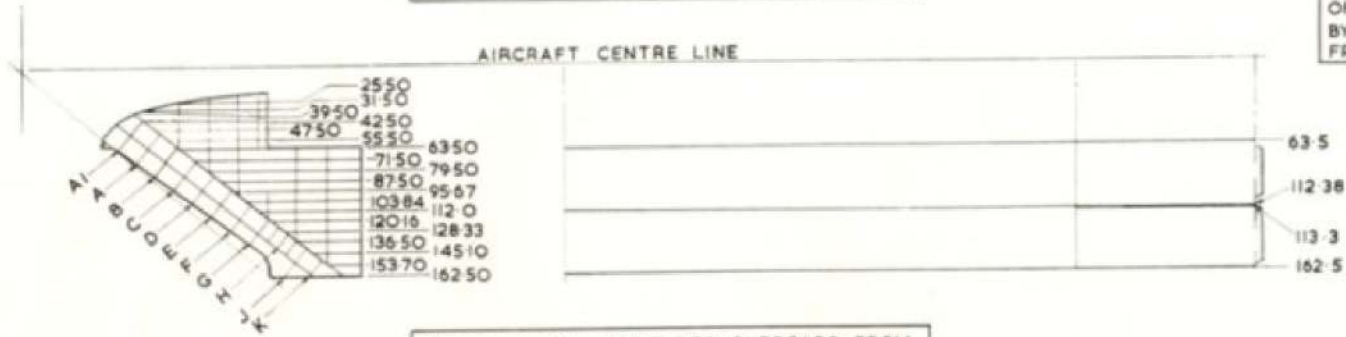
ITEM	COMPONENT	L	W	H	ITEM	COMPONENT	L	W	H
1	NOSE (upper portion - metal)	13.5	8.75	4.25	17	JET PIPE CAP	3.0	5.0	1.4
1A	NOSE (lower portion - composite)	13.5	8.75	5.5	18	ENGINE (OLYMPUS 101) including oil and starter	13.5	4.0	4.5
2	FRONT FUSELAGE	16.75	9.2	10.25	19	NOSE-WHEEL DOOR	9.5	1.75	0.33
3	CENTRE FUSELAGE	52.85	28.85	12.0	20	ENGINE DOOR, FORWARD, inboard	5.5	4.0	0.33
4	REAR FUSELAGE	10.5	10.6	6.33	21	ENGINE DOOR, CENTRE, inboard	5.0	4.0	1.0
5	TAIL FAIRING	5.0	3.0	3.0	22	ENGINE DOOR, AFT, inboard	6.25	4.0	1.0
6	WING	50.0	35.0	5.0	23	ENGINE DOOR, FORWARD, outboard	5.6	4.0	0.66
7	ELEVATOR - inboard	9.5	10.75	1.66	24	ENGINE DOOR, CENTRE, outboard	5.0	4.0	1.0
8	ELEVATOR - outboard	10.5	10.0	1.5	25	ENGINE DOOR, AFT, outboard	6.25	4.0	1.1
9	AILERON - inboard	7.66	7.2	1.1	26	MAIN-WHEEL DOOR	6.5	4.75	0.5
10	AILERON - outboard	10.0	5.25	1.0	27	MAIN-WHEEL FAIRING	5.33	3.66	0.33
11	BOMB DOOR (each)	29.25	5.2	0.66	28	MAIN ENTRANCE DOOR	5.0	2.75	1.0
12	FIN	21.0	10.0	2.0	29	MAIN-WHEEL UNIT (each)	12.66	5.0	6.0
13	RUDDER	18.5	7.0	1.2	30	NOSE-WHEEL UNIT	13.25	3.5	3.15
14	FIN CAP	11.5	2.25	1.0	31	REAR FUSELAGE FAIRING	8.25	5.0	3.33
15	JET PIPE (each)	21.0	2.5	2.5					
16	CANOPY	10.5	4.66	1.4					

RESTRICTED



FUSELAGE FORMERS ARE IDENTIFIED BY THEIR DISTANCES IN INCHES FORE AND AFT FROM THE DATUM FACE OF THE FRONT SPAR.

NOTE: REAR FUSELAGE FORMERS AFT OF FORMER 487.5 ARE IDENTIFIED BY THEIR DISTANCE IN INCHES FROM DATUM FACE OF FORMER 487.5



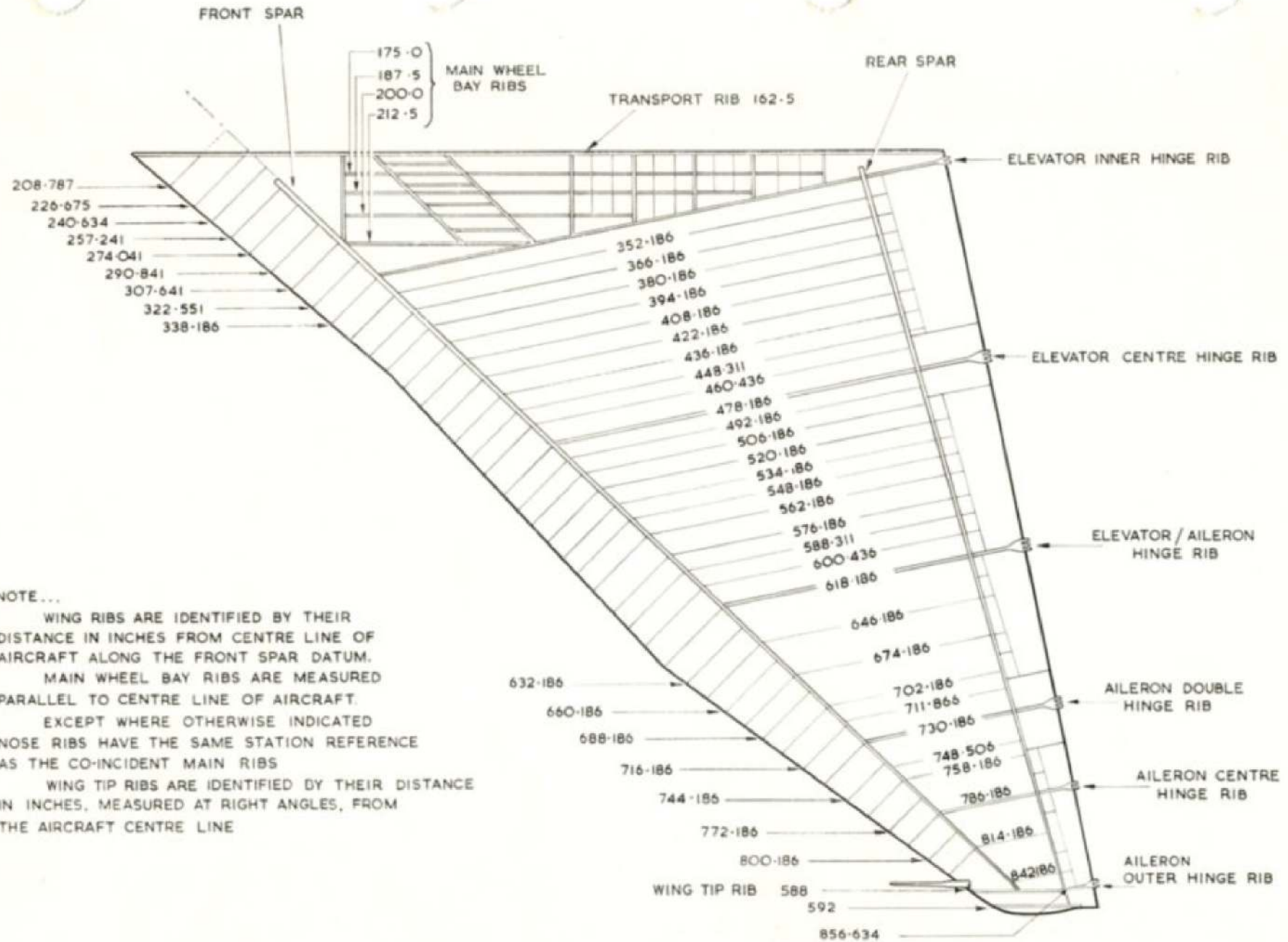
MAIN RIBS ARE IDENTIFIED OUTBOARD FROM THE CENTRE LINE OF AIRCRAFT. NOSE RIBS ARE IDENTIFIED FROM THE CENTRE LINE OF AIRCRAFT ALONG THE FRONT SPAR.

VULCAN B. MK. IA. FUSELAGE

RESTRICTED

RESTRICTED

RESTRICTED



NOTE...

WING RIBS ARE IDENTIFIED BY THEIR DISTANCE IN INCHES FROM CENTRE LINE OF AIRCRAFT ALONG THE FRONT SPAR DATUM.

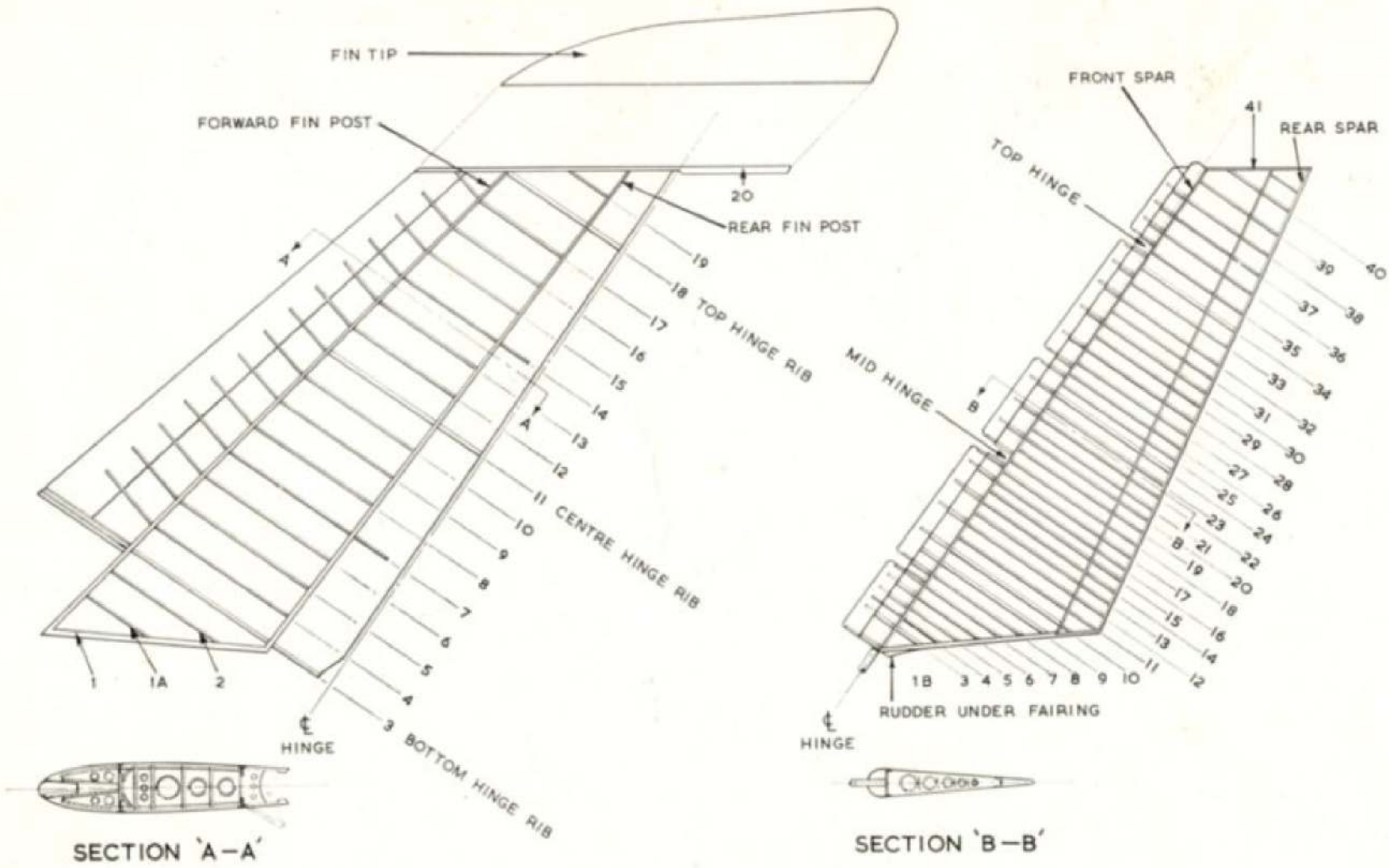
MAIN WHEEL BAY RIBS ARE MEASURED PARALLEL TO CENTRE LINE OF AIRCRAFT.

EXCEPT WHERE OTHERWISE INDICATED NOSE RIBS HAVE THE SAME STATION REFERENCE AS THE CO-INCIDENT MAIN RIBS

WING TIP RIBS ARE IDENTIFIED BY THEIR DISTANCE IN INCHES, MEASURED AT RIGHT ANGLES, FROM THE AIRCRAFT CENTRE LINE

VULCAN B. MK.IA. MAINPLANE

RESTRICTED



RESTRICTED

VULCAN B/K MK.IA FIN AND RUDDER

MEMORANDUM OF INSTRUCTIONS

1. **CONTENTS** This Schedule contains a list of the Airframe Spare Parts embodied in A.P. 4505C. Vol. 3, Part 1 which have been allocated Vocabulary Section 26DC.
2. **DEMANDS**

Units are to prepare their demands for spare parts strictly in accordance, with A.P. 830, Vol. 1. Demands for the parts required to make an airframe serviceable are invariably to quote the Serial Number of the Aircraft. Units are to demand parts for this airframe under Vocabulary Section 26DC except where the schedule states otherwise. Where the schedule states that a part is held under another Vocabulary Section the demand should quote that section after reference to the appropriate publication.

Unreferenced airframe items are not normally provisioned as spares. Demands for these items are to be submitted only when required to replace parts which have become unserviceable in use, to meet anticipated requirements where previous consumption has been recorded. Such demands are to quote Makers Part No.

Parts qualified by the symbol "LM" are to be manufactured by consumer units. If it is found that manufacture is beyond the capacity of the unit and that the requirement cannot be economically met by fitting an assembly bearing a reference number then the Unit should demand the part required under its part number and endorse demand "Unable to manufacture Locally".

When a Unit requires an unreferenced item which is beyond the Unit's capacity to manufacture or when a referenced part cannot be obtained consideration should be given to fitting the assembly of which this item is a part, if that assembly bears a reference number.

Certain items are annotated "MR". These are normally provisioned for issue only to Units and Contractors authorised to undertake the major repair of VULCAN B.MK. 1A airframes.
3. **MODIFICATIONS (CLASSES 1 OR 2)** When an item is introduced by a modification the modification number is shown after the description of the item. Redundant items are deleted from the text.
4. **MODIFICATIONS (CLASSES 3 AND 4) AND AMENDMENTS** When an item is introduced by this authority the No. is shown after the description. Parts rendered redundant are not to be deleted from the publication, but the description of these items must include the additional words "(PRE-MOD.)". New items added must include, in the description the words "(MOD.)".
5. **OBSOLESCENT STOCK** An asterisk (*) shown in the Part No. column of an item indicates that no further purchase of the item will be made but that stocks will be issued until they are exhausted.
6. **NUMBERS OFF** The figure in the Number Off column indicates :—
 - (a) The quantity required per airframe when the description is NOT indented.
 - (b) The quantity required per assembly or sub assembly when the description IS indented.

MEMORANDUM OF INSTRUCTIONS

7. COMPILATION OF TEXT

The multi-indentation system has been used in which the main assemblies, sub-assemblies, groups and detail items indicate their relationship by the indentation of the descriptive titles. The indentation is in accordance with the following outline :—

- (a) The Main Assembly starts at the left hand margin and is printed in capital letters.
- (b) First division :—
Sub-assemblies, groups or detail parts of the Main Assembly are indented one space.
- (c) Second division :—
Groups or detail parts which are components of a Sub-assembly or group are each indented a further space.
- (d) Third and subsequent divisions :—
In sequence.

8. MAIN ASSEMBLY DRAWINGS

Where for description or identification purposes only a Main Assembly drawing is shown, that drawing number is shown in brackets at the end of the description.

9. PIPE LINES, ELECTRICAL AND FLEXIBLE CABLES

Local manufacture of these items is intended wherever possible. Charts showing the various materials and parts required are included as appendixes at the end of the schedule.

10. AMENDMENT LISTS

Amendments are to be correctly inserted and entered in the Amendment Certificate which is to be found in front of the schedule. Manuscript amendments are to be made in ink.

Amendment Lists are numbered consecutively and will be issued at regular intervals. This schedule is to be checked with the statement of Amendment Lists issued, which is published periodically by A.M.O.s.

11. ASSOCIATED PUBLICATIONS

The following associated Schedules of Spare Parts for Airframe Accessory Equipment are to be used in conjunction with this schedule :—

Dunlop Parts A.P. 4515C, Vol. 3, Part 1, Sect. 2, Chap. 5

Dowty Parts A.P. 4515B, Vol. 3, Part 1, Sect. 2, Chap. 18

Boulton Paul Parts ... A.P. 4515Q, Vol. 3, Part 1, Chap. 2

MEMORANDUM OF INSTRUCTIONS

12. CLASSIFICATION
OF EQUIPMENT

The letters denoting the Class of Store are defined as follows :—

CLASS "A"—Class "A" items are those items of equipment which remain on charge and cannot be replaced except on return to store. Repairable items which are beyond the capacity or authority of the unit to repair are to be returned to the appropriate Maintenance Unit categorised R/D.

CLASS "B"—Class "B" items are those items of equipment which remain on charge and cannot be replaced except on return to store. Items which are beyond the capacity of the unit to repair, or which for technical reasons are not capable of being repaired whatever the defect are to be disposed of locally by units.

CLASS "C"—Class "C" items are items of equipment other than Class "A" or "B" which are consumable in use, or are incapable of being economically repaired and are not of a nature which would necessitate detailed accounting as Class "A" or "B" equipment.

PERIODICAL INSPECTION OF SPARE PARTS
STORAGE CATEGORIES

For details of different storage categories see A.P. 1086, Book 1, Second Edition, Memorandum of Instructions, Part 3.

A.P. 4505C, Vol. 3, Part 1

Aircraft :

Aircraft : VULCAN B.MK. 1A
Section : 26DC

NOTE :—Items which are shown in this Publication with an A.P. 1086 reference number are not included below. Details of categories and periodicity are stated in the relevant sub-section of A.P. 108.

General Heading	Category	Periodicity of Inspection in *Temperate Climates	
		Packaged	Unpackaged

* For method of calculating periodicity of inspection in tropical climates see A.P. 1086, Book 1, Second Edition Memorandum of Instructions, Part 3.

MODIFICATION AND AMENDMENT SHEET

Mod. No.	A.L. No.	Mod. No.	A.L. No.	Mod. No.	A.L. No.	Mod. No.	A.L. No.	Mod. No.	A.L. No.	Mod. No.	A.L. No.
1	†	54	†	107	†	160	†	213	†	266	N.A.
2	†	55	†	108	†	161	C	214	†	267	N.A.
3	C	56	†	109	C	162	†	215	C	268	†
4	C	57	†	110	†	163	C	216	†	269	C
5	C	58	†	111	C	164	†	217	†	270	C
6	C	59	†	112	†	165	†	218	†	271	N.A.
7	C	60	†	113	†	166	†	219	†	272	†
8	C	61	†	114	†	167	†	220	†	273	†
9	C	62	†	115	†	168	†	221	†	274	†
10	†	63	†	116	†	169	†	222	†	275	†
11	†	64	†	117	†	170	†	223	†	276	N.A.
12	†	65	†	118	C	171	†	224	†	277	C
13	C	66	†	119	C	172	C	225	†	278	†
14	C	67	C	120	†	173	†	226	†	279	†
15	C	68	†	121	†	174	†	227	†	280	N.A.
16	C	69	†	122	C	175	†	228	N.A.	281	†
17	†	70	†	123	†	176	†	229	N.A.	282	†
18	C	71	C	124	†	177	†	230	N.A.	283	†
19	†	72	†	125	†	178	†	231	N.A.	284	†
20	†	73	†	126	†	179	C	232	†	285	†
21	†	74	C	127	†	180	†	233	†	286	†
22	†	75	†	128	†	181	†	234	N.A.	287	†
23	†	76	†	129	†	182	†	235	†	288	†
24	†	77	C	130	†	183	N.A.	236	†	289	†
25	†	78	†	131	†	184	†	237	†	290	C
26	†	79	†	132	†	185	†	238	†	291	†
27	C	80	N.A.	133	†	186	†	239	†	292	N.A.
28	†	81	†	134	†	187	†	240	C	293	†
29	†	82	†	135	†	188	†	241	†	294	†
30	†	83	†	136	†	189	†	242	†	295	†
31	†	84	†	137	†	190	C	243	†	296	†
32	†	85	†	138	†	191	†	244	†	297	C
33	†	86	†	139	C	192	N.A.	245	†	298	†
34	†	87	†	140	†	193	†	246	N.A.	299	†
35	†	88	N.A.	141	†	194	†	247	†	300	†
36	†	89	†	142	†	195	†	248	C	301	C
37	†	90	†	143	N.A.	196	†	249	C	302	†
38	†	91	†	144	†	197	N.A.	250	†	303	†
39	†	92	†	145	†	198	N.A.	251	†	304	†
40	†	93	†	146	†	199	N.A.	252	†	305	C
41	†	94	†	147	†	200	N.A.	253	C	306	C
42	N.A.	95	†	148	†	201	†	254	†	307	†
43	†	96	†	149	†	202	†	255	†	308	†
44	†	97	†	150	†	203	†	256	†	309	†
45	†	98	C	151	†	204	†	257	†	310	†
46	†	99	†	152	†	205	†	258	†	311	†
47	†	100	†	153	†	206	†	259	†	312	†
48	†	101	†	154	†	207	†	260	†	313	†
49	†	102	†	155	†	208	†	261	†	314	†
50	†	103	N.A.	156	†	209	†	262	†	315	†
51	†	104	†	157	†	210	†	263	†	316	†
52	†	105	†	158	†	211	†	264	N.A.	317	†
53	†	106	†	159	†	212	C	265	†	318	†

† Incorporated in initial issue of Schedule.
 NA Modification/Amendment not applicable to this Schedule.
 C Modification/Amendment cancelled.

MODIFICATION AND AMENDMENT SHEET

Mod. No.	A.L. No.	Mod. No.	A.L. No.	Mod. No.	A.L. No.	Mod. No.	A.L. No.	Mod. No.	A.L. No.	Mod. No.	A.L. No.
319	†	373	†	427	†	481	†	535	†	589	N.A.
320	†	374	†	428	†	482	†	536	†	590	†
321	†	375	†	429	†	483	†	537	†	591	†
322	†	376	†	430	†	484	†	538	†	592	†
323	†	377	†	431	†	485	†	539	†	593	†
324	†	378	†	432	†	486	†	540	†	594	†
325	C	379	†	433	C	487	†	541	†	595	N.A.
326	†	380	†	434	†	488	N.A.	542	†	596	†
327	†	381	†	435	†	489	†	543	C	597	C
328	†	382	†	436	†	490	†	544	†	598	C
329	†	383	†	437	N.A.	491	†	545	N.A.	599	†
330	†	384	†	438	†	492	†	546	N.A.	600	†
331	†	385	†	439	†	493	†	547	†	601	†
332	†	386	†	440	†	494	†	548	†	602	†
333	†	387	†	441	†	495	†	549	†	603	†
334	†	388	†	442	†	496	†	550	†	604	†
335	†	389	†	443	C	497	†	551	†	605	†
336	†	390	†	444	†	498	C	552	†	606	†
337	†	391	†	445	†	499	†	553	†	607	†
338	N.A.	392	†	446	N.A.	500	†	554	N.A.	608	N.A.
339	†	393	†	447	†	501	N.A.	555	†	609	†
340	†	394	†	448	†	502	†	556	†	610	N.A.
341	†	395	†	449	†	503	†	557	†	611	†
342	†	396	†	450	C	504	†	558	N.A.	612	†
343	†	397	†	451	†	505	†	559	†	613	†
344	†	398	†	452	†	506	N.A.	560	N.A.	614	†
345	†	399	†	453	N.A.	507	†	561	N.A.	615	†
346	†	400	†	454	†	508	†	562	†	616	†
347	†	401	†	455	†	509	N.A.	563	N.A.	617	N.A.
348	†	402	†	456	†	510	†	564	†	618	†
349	†	403	†	457	†	511	N.A.	565	†	619	N.A.
350	†	404	†	458	†	512	†	566	†	620	†
351	C	405	†	459	†	513	N.A.	567	C	621	†
352	†	406	C	460	†	514	N.A.	568	N.A.	622	†
353	†	407	†	461	†	515	†	569	†	623	†
354	†	408	†	462	C	516	†	570	†	624	N.A.
355	†	409	†	463	†	517	N.A.	571	†	625	†
356	†	410	†	464	†	518	N.A.	572	†	626	†
357	†	411	†	465	†	519	†	573	N.A.	627	†
358	†	412	†	466	†	520	C	574	†	628	N.A.
359	†	413	†	467	†	521	N.A.	575	C	629	†
360	N.A.	414	†	468	N.A.	522	†	576	†	630	†
361	†	415	†	469	†	523	†	577	†	631	N.A.
362	†	416	†	470	†	524	†	578	N.A.	632	†
363	†	417	†	471	†	525	N.A.	579	N.A.	633	†
364	†	418	†	472	†	526	N.A.	580	C	634	†
365	†	419	†	473	†	527	N.A.	581	†	635	†
366	†	420	†	474	†	528	N.A.	582	†	636	N.A.
367	†	421	†	475	†	529	†	583	†	637	†
368	†	422	†	476	†	530	N.A.	584	N.A.	638	†
369	†	423	†	477	†	531	†	585	†	639	N.A.
370	†	424	†	478	†	532	†	586	N.A.	640	N.A.
371	†	425	†	479	†	533	N.A.	587	†	641	†
372	†	426	†	480	†	534	†	588	†		

† Incorporated in initial issue of Schedule.
 NA Modification/Amendment not applicable to this Schedule.
 C Modification/Amendment cancelled.

TERANG BERTAMBAH DUA HIMPUNAN
MODIFICATION AND AMENDMENT SHEET

Mod. No.	A.L. No.	Mod. No.	A.L. No.	Mod. No.	A.L. No.	Mod. No.	A.L. No.	Mod. No.	A.L. No.	Mod. No.	A.L. No.
642	†	696	†	757	N.A.	823	†	880	†	953	†
643	†	697	†	758	†	824	†	881	N.A.	954	N.A.
644	N.A.	698	N.A.	759	C	825	N.A.	882	†	955	N.A.
645	N.A.	699		760	N.A.	826		883	N.A.	956	N.A.
646	†	700		761	N.A.	827	†	to		957	
647	†	701	†	762	†	828	†	898	N.A.	958	†
648	C	702	N.A.	763	N.A.	829	†	899	†	959	†
649	N.A.	703	†	764	†	830	N.A.	900	†	960	N.A.
650	N.A.	704	†	765	N.A.	831	†	901	N.A.	961	†
651	†	705	†	to		832	C	902	N.A.	962	N.A.
652	†	706	C	776	N.A.	833	N.A.	903	†	963	N.A.
653	†	707	N.A.	777	†	834	N.A.	904	†	964	†
654	C	708	†	778	N.A.	835	†	905	N.A.	965	†
655	†	709	N.A.	779	†	836	N.A.	906	N.A.	966	N.A.
656	N.A.	710	†	780	†	837	†	907		967	N.A.
657	†	711	N.A.	781	C	838	N.A.	908	N.A.	968	†
658	N.A.	712	N.A.	782	C	to		909		969	N.A.
659	†	713	†	783	C	841	N.A.	910		970	N.A.
660	N.A.	714	†	784	C	842	†	911	†	971	N.A.
661	†	715	N.A.	785	C	843	N.A.	912	†	972	N.A.
662	†	716	†	786	C	844	†	913	†	973	†
663	†	717	N.A.	787	C	845	†	914		974	N.A.
664	†	718	†	788	N.A.	846	N.A.	915	N.A.	975	N.A.
665	N.A.	719	†	789	C	to		to		976	N.A.
666	†	720	N.A.	790	C	849	N.A.	925	N.A.	977	†
667	N.A.	721	N.A.	791	C	850	†	926	†	978	†
668	N.A.	722	†	792	C	851	N.A.	927	†	979	†
669	†	723	C	793		to		928	†	980	N.A.
670	†	724	†	794	C	856	N.A.	929		981	N.A.
671	†	725	†	795	C	857		930		982	†
672	†	726	†	796	C	858	†	931	N.A.	983	N.A.
673	N.A.	727	C	797	C	859	N.A.	932	C	984	N.A.
674	†	728	N.A.	798	N.A.	860	†	933	C	985	N.A.
675	†	to		799	C	861	N.A.	934	N.A.	986	†
676	†	738	N.A.	800	†	862	N.A.	935	N.A.	987	
677	†	739	†	801	†	863	N.A.	936	†	988	†
678	†	740	†	802	N.A.	864	†	937	N.A.	989	
679	N.A.	741	N.A.	803	†	865	†	938	N.A.	990	N.A.
680	C	742	†	804	N.A.	866		939	N.A.	991	†
681	†	743	N.A.	to		867	†	940	†	992	†
682	†	744	N.A.	811	N.A.	868	†	941	N.A.	993	N.A.
683	N.A.	745	†	812	†	869	†	942	N.A.	994	N.A.
684	†	746	C	813	†	870	N.A.	943	N.A.	995	
685	C	747	N.A.	814	†	871		944	†	996	N.A.
686	N.A.	748	N.A.	815	†	872	N.A.	945	†	997	N.A.
to		749	C	816	†	873	N.A.	946	N.A.	998	†
691	N.A.	750	C	817	†	874	†	947	†	999	N.A.
692	†	751	†	818	†	875	N.A.	948	N.A.	1000	N.A.
693	N.A.	752	†	819	N.A.	876		949	†	1001	†
694	N.A.	753	N.A.	820	†	877	†	950	N.A.	1002	N.A.
695	†	754	†	821	N.A.	878	†	951	†	1003	N.A.
		755	†	822	†	879	N.A.	952	N.A.		
		756	N.A.								

† Incorporated in initial issue of Schedule.
 N/A Modification/Amendment not applicable to this Schedule.
 C Modification/Amendment cancelled.

MODIFICATION AND AMENDMENT SHEET

Mod. No.	A.L. No.	Mod. No.	A.L. No.	Mod. No.	A.L. No.	Mod. No.	A.L. No.	Mod. No.	A.L. No.	Mod. No.	A.L. No.
1004	†	1057	N.A.	1133	N.A.	1192		1259	N.A.	1317	N.A.
1005	†	1058	N.A.	1134	†	1193	N.A.	1260	†	to	
1006	†	1059	†	1135	N.A.	1194	N.A.	1261	N.A.	1321	N.A.
1007	†	1060	†	1136		1195	N.A.	1262	†	1322	
1008	N.A.	1061	†	1137		1196		1263	N.A.	1323	
1009	N.A.	1062	†	1138	†	1197	N.A.	1264	†	1324	N.A.
1010	N.A.	1063		1139	N.A.	to		1265	N.A.	1325	N.A.
1011		1064	N.A.	to		1200	N.A.	1266		1326	N.A.
1012	†	1065	†	1142	N.A.	1201	†	1267		1327	
1013	†	1066		1143	†	1202	N.A.	1268	N.A.	1328	
1014		1067		1144	†	1203	N.A.	1269	N.A.	1329	
1015	†	1068	N.A.	1145	†	1204	N.A.	1270	†	1330	
1016	†	to		1146	†	1205	N.A.	1271	N.A.	1331	
1017	N.A.	1089	N.A.	1147	†	1206	†	to		1332	
1018	N.A.	1090		1148	N.A.	1207	N.A.	1277	N.A.	1333	
1019		1091	†	1149	N.A.	1208	†	1278	†	1334	†
1020	†	1092	†	1150	N.A.	1209		1279	N.A.	1335	N.A.
1021	N.A.	1093	†	1151	†	1210	N.A.	1280		1336	N.A.
1022	N.A.	1094		1152	†	1211	†	1281	N.A.	1337	N.A.
1023	†	1095	†	1153	†	1212	N.A.	1282	N.A.	1338	
1024	†	1096	†	1154	N.A.	to		1283	†	1339	N.A.
1025	†	1097	N.A.	1155		1227	N.A.	1284	N.A.	to	
1026	†	1098	N.A.	1156	†	1228		1285	†	1342	N.A.
1027		1099	†	1157	†	1229		1286	N.A.	1343	
1028	†	1100	N.A.	1158	†	1230	†	1287	N.A.	1344	†
1029	†	1101	N.A.	1159	N.A.	1231	N.A.	1288		1345	N.A.
1030	†	1102	†	1160	N.A.	1232	N.A.	1289	N.A.	1346	N.A.
1031	N.A.	1103	N.A.	1161	†	1233	N.A.	to		1347	N.A.
1032	N.A.	1104	†	1162	N.A.	1234		1292	N.A.	1348	†
1033	N.A.	1105	†	1163	N.A.	1235		1293		1349	†
1034	†	1106	N.A.	1164	†	1236	†	1294	N.A.	1350	N.A.
1035		to		1165	†	1237	N.A.	1295	†	1351	N.A.
1036	†	1110	N.A.	1166	†	1238	N.A.	1296	N.A.	1352	
1037	N.A.	1111	†	1167	N.A.	1239	N.A.	1297	N.A.	1353	N.A.
1038	N.A.	1112		1168		1240		1298		1354	N.A.
1039	N.A.	1113		1169	N.A.	1241	N.A.	1299		1355	
1040	†	1114	N.A.	1170		1242	†	1300		1356	N.A.
1041	N.A.	1115	N.A.	1171	N.A.	1243	†	1301	N.A.	1357	N.A.
1042	†	1116	N.A.	to		1244	N.A.	to		1358	N.A.
1043	N.A.	1117	†	1178	N.A.	1245	N.A.	1304	N.A.	1359	†
1044	†	1118	†	1179		1246		1305		1360	
1045	N.A.	1119	N.A.	1180	N.A.	1247	N.A.	1306	N.A.	1361	
1046	†	1120	†	1181	N.A.	1248		1307		1362	
1047	†	1121	N.A.	1182		1249		1308		1363	N.A.
1048	†	1122	†	1183	†	1250		1309	N.A.	1364	
1049	N.A.	1123	†	1184	†	1251	N.A.	1310	†	1365	
1050		1124	N.A.	1185	N.A.	1252		1311	N.A.	1366	†
1051	N.A.	1125		1186	†	1253	†	1312	†	1367	N.A.
1052		1126	†	1187	†	1254	N.A.	1313	†	to	
1053		1127	N.A.	1188	N.A.	1255		1314	†	1370	N.A.
1054	N.A.	to		1189	†	1256	N.A.	1315	N.A.	1371	†
1055	N.A.	1131	N.A.	1190	N.A.	1257	†	1316	†	1372	†
1056	†	1132	†	1191		1258	N.A.			1373	N.A.

† Incorporated in initial issue of Schedule.
 NA Modification/Amendment not applicable to this Schedule.
 C Modification/Amendment cancelled.

MODIFICATION AND AMENDMENT SHEET

Mod. No.	A.L. No.	Mod. No.	A.L. No.	Mod. No.	A.L. No.	Mod. No.	A.L. No.	Mod. No.	A.L. No.	Mod. No.	A.L. No.
1374	N.A.	1437	†	1491	N.A.	1553					
1375	N.A.	1438	†	1492	N.A.	1554	N.A.				
1376	N.A.	1439	N.A.	1493		1555	N.A.				
1377	†	1440	†	1494		1556					
1378	N.A.	1441		1495		1557	N.A.				
1379		1442	N.A.	1496		1558	N.A.				
1380	†	1443	N.A.	1497	N.A.	1559					
1381	†	1444	N.A.	1498		1560					
1382	N.A.	1445		1499	N.A.	1561	N.A.				
to		1446	N.A.	1500	N.A.	to					
1390	N.A.	to		1501	N.A.	1565	N.A.				
1391		1449	N.A.	1502		1566					
1392	N.A.	1450		1503	N.A.	1567					
1393	N.A.	1451	N.A.	to		1568					
1394	N.A.	1452	N.A.	1506	N.A.	1569					
1395		1453		1507		1570					
1396		1454		1508	N.A.	1571					
1397		1455	N.A.	to		1572	N.A.				
1398		1456	N.A.	1513	N.A.	1573					
1399	N.A.	1457		1514		1574					
1400		1458		1515		1575					
1401	†	1459		1516	N.A.	1576					
1402		1460		to		1577					
1403		1461		1523	N.A.	1578	N.A.				
1404	N.A.	1462	N.A.	1524		1579	N.A.				
1405	N.A.	1463	N.A.	1525	N.A.	1580					
1406	†	1464	N.A.	1526	N.A.	1581	N.A.				
1407	N.A.	1465		1527	N.A.	1582	N.A.				
1408	†	1466	N.A.	1528		1583					
1409	†	1467	N.A.	1529	N.A.	1584					
1410		1468		1530		1585	N.A.				
1411	N.A.	1469	N.A.	1531	N.A.	1586	N.A.				
1412	N.A.	1470		1532		1587	N.A.				
1413		1471	N.A.	1533	N.A.	1588					
1414		1472		1534	N.A.	1589	N.A.				
1415		1473	N.A.	1535		1590	N.A.				
1416	†	1474		1536		1591					
1417	N.A.	1475		1537		1592					
to		1476		1538		1593	N.A.				
1420	N.A.	1477	N.A.	1539		1594					
1421	†	1478	N.A.	1540	N.A.	1595					
1422	†	1479		1541		1596					
1423	N.A.	1480		1542		1597					
1424	N.A.	1481	N.A.	1543		1598	N.A.				
1425	N.A.	1482		1544	N.A.						
1426	†	1483	N.A.	1545	N.A.						
1427	†	1484	N.A.	1546							
1428		1485	N.A.	1547							
1429	†	1486		1548							
1430	†	1487		1549							
1431	N.A.	1488	N.A.	1550							
to		1489	N.A.	1551	N.A.						
1436	N.A.	1490		1552	N.A.						

† Incorporated in initial issue of Schedule.
 NA Modification/Amendment not applicable to this Schedule.
 C Modification/Amendment cancelled.

INDEX OF ASSEMBLIES

Assembly	Drawing No.	Page No.	Plate No.	Follows Page No.
AIRFRAME COMPONENTS	—	B1	B1	B6
ALIGHTING GEAR				
Undercarriage, main, with wheels port and starboard	—	CA1	C1	CA8
Undercarriage, nosewheel and mounting...	K.2725 & D.9460	CB1	C2	CB4
ARMAMENT				
Bomb gear	—	DA1	—	—
Pyrotechnics	—	DB1	—	—
CONTROLS				
Auto-pilot	—	EA1	E1	EA2
Engine in crew's nacelle	O.3651	EB1	E2-3	EB10
Engine forward of front spar	O.3651	EC1	E4	EC6
Engine, aft front spar in centre portion fuselage	O.3518	ED1	E5	ED10
Auto-stabiliser... ..	—	EE1	E6	EE12
Flying in crew's nacelle	R.3577	EF1	E7-8	EF12
Flying in centre portion fuselage	R.3577	EG1	E9-11	EG22
Flying in rear portion fuselage aft former 428A	R.3577	EH1	E12	EH4
Flying in mainplane port and starboard	R.3577	EJ1	E13-14	EJ14
Steering, nosewheel	R.3634	EK1	E15	EK6
ELECTRICAL INSTALLATION				
Bomb bay	V.6354	FA1	F1-3	FA37
Console and mounting, port in crew's nacelle	V.6569	FB1	F4	FC2
Console and mounting, starboard in crew's nacelle	V.6557 & V.7463	FC1	F4	FC2
Crew's nacelle	V.6352	FD1	F5-6	FD44
Engine bay	V.6357	FE1	F7	FE16
Centre portion, in compartment aft undercarriage bay, port and starboard	V.6359	FF1	F8	—
Centre portion fuselage, under air intakes, port and starboard	V.6360	FG1	F8	FG4

INDEX OF ASSEMBLIES

Assembly	Drawing No.	Page No.	Plate No.	Follows Page No.
ELECTRICAL INSTALLATION (Cont'd)				
Nose portion	V.6352	FH1	F12	—
Rear portion	V.6356 & V.8635	FJ1	—	—
Mainplane, port and starboard	V.6361	FK1	F10	FK12
Nosewheel bay	V.6353	FM1	F11-12	FM22
Power compartment	V.6355	FN1	F13-14	FN20
Undercarriage bay, port and starboard	V.6358	FP1	F15-16	FP18
EQUIPMENT				
Cable, brake parachute	Z7557	GA1	—	—
Compass installation	Z.7901	GB1	G2	GB2
Curtains and Visors	—	GC1	G3	GD2
Dinghy Installation	Z.7578	GD1	G3	GD2
Fireproofing and Soundproofing	—	GE1	G4	GE12
Instrument panels	—	GF1	G5-12	GF44
Periscope installation	Z.8684	GG1	G2	GB2
Seats and fittings	—	GH1	G13	GH4
Sextant Stowage and mounting tray	Z.7973 & Z.8384	GJ1	G2	GB2
Ladders	—	GK1	G2	GB2
Trimming and floor covering	Z.7989	GM1	G14-15	GM10
Rocket assisted take off (Fixed fittings)	O.3733	GN1	—	—
EQUIPMENT SPECIAL OPERATIONAL				
Mounting Ballast & Socket Plates when special airborne equipment is not fitted	Z.9980	HA1	—	—
Panel for alternative bombing	V.6868	HB1	—	—
Periscope, rear viewing interim version (fixed fittings) (1st 4 A/C)	—	HC1	—	—
Periscope, rear viewing interim version (removable fittings)	—	HD1	—	—
Periscope, rear viewing interim version (fixed fittings)	—	HE1	—	—
Removable fittings—flight Refuelling	P.3160	HF1	—	—
Rocket assisted take off	O.3748	HG1	—	—

INDEX OF ASSEMBLIES

Assembly	Drawing No.	Page No.	Plate No.	Follows Page No.
EQUIPMENT SPECIAL OPERATIONAL (Cont'd)				
Removable fittings, additional crew seat ...	N.1425	HJ1	—	—
Removable fittings, window launching ...	Z.8277	HH1	—	—
FUSELAGE				
Crew's nacelle	D.9580	JA1	J1-9	JA54
Centre portion	D.9581	JB1	J10-19	JB108
Bomb door, inner port and starboard ...	D.8901	JC1	J20	JC8
Bomb door, outer port and starboard ...	D.8900	JC3	J20	JC8
Doors main undercarriage port and starboard	F.8120	JD1	J21	JD8
Fairings main undercarriage	F.8773 F.8774	JE1	J22	JE6
Nose portion	D.9579	JF1	J23-24	JF12
Rear portion	D.9582	JG1	—	—
GROUND EQUIPMENT				
Aircraft tool kit	Z.7888	KA1	—	—
Flight tool kit... ..	Z.7887	KB1	—	—
Handling storage	—	KC1	—	—
Jacking	—	KD1	—	—
Rigging	—	KE1	—	—
Testing and servicing	—	KF1	—	—
Towing and steering	—	KG1	—	—
Trestling and Slings	—	KH1	—	—
Engine changing	—	KJ1	—	—
MAINPLANES				
Aileron, inner port and starboard	F.7849	MA1	M1	MA8
Aileron, outer port and starboard	F.7850	MA5	M1	MA8
Elevator, inner port and starboard	F.7851	MB1	M2	MB10
Elevator, outer port and starboard	F.7852	MB5	M2	MB10
Mainplane complete with wing tip port and starboard	F.8833	MC1	M3-16	MC46
Tip, mainplane, port and starboard... ..	F.9615	MD1	—	—

Assembly	Drawing No.	Page No.	Plate No.	Follows Page No.
POWER INSTALLATION				
Engine bulkheads	—	NA1	—	—
Engine installation	O.3530	NB1	—	—
Engine mounting and hoisting	—	NC1	N1-N2	NC6
RADIO AND RADAR INSTALLATION				
A.D.F. installation	T.4777	PA1	—	—
Conduits, Crates, Ducts, Fairleads and Troughs	—	PB1	—	—
Gee installation	T.3411	PC1	—	—
Green Satin installation	T.4760	PD1	—	—
H.F. installation	T.4053	PE1	—	—
H.2.S. installation	T.3408	PF1	—	—
I.F.F. installation	T.3403	PG1	—	—
I.L.S. installation	T.4342	PH1	—	—
Intercomm. installation	T.3874	PJ1	—	—
N.B.C. installation	T.3409	PK1	—	—
Radio altimeter Mk. 5 installation	T.3407	PM1	—	—
R.C.M. installation	T.4723	PN1	—	—
Rebecca installation	T.5122	PO1	—	—
Tail Warning installation	T.4713	PQ1	—	—
V.H.F. installation	T.4823	PR1	—	—
SERVICES				
Air conditioning	—	QA1	—	—
Air speed indicator	—	QB1	Q17-19	QB20
Clips fairlead and connections	—	QC1	—	—
Cooling power units and radar equipment	—	QD1	Q20-21	QD16
Emergency air... ..	—	QE1	Q22-23	QE8
Exhaust system. Power units	—	QF1	Q24	QF4
Fire extinguisher system	—	QG1	Q25-26	QG6
Fire extinguisher system (Methyl Bromide)	—	QH1	Q27-28	QH8
Fuel system, aft front spar	P.3026	QJ1	Q29	QJ6

INDEX OF ASSEMBLIES

Assembly	Drawing No.	Page No.	Plate No.	Follows Page No.
SERVICES (Cont'd).				
Fuel system No. 1 and 2 tank fuselage ...	P.3034	QK1	Q30-32	QK10
Fuel system, centre portion	—	QM1	Q33	QM2
Fuel system mainplane	P.3040	QN1	Q34-41	QN32
Hydraulics	—	QQ1	—	—
Fuel system, Flight Refuelling (Fixed Fittings)	—	QP1	Q42-49	QP50
Inhibitor system and anti-icing windscreen	D.10435	QR1	Q51	QR4
Nitrogen system and fuel tank Pressurization	—	QS1	Q52-54	QS44
Oxygen system	—	QT1	Q55	QT16
Pneumatics	—	QU1	Q56-58	QU18
Windscreen and bomb aimers window de-icing	—	QV1	Q59	QV6
Windscreen wiper installation	Q.1058	QW1	—	—
TAIL UNIT				
Fin	H.2230	RA1	R1-2	RA 6
Rudder	H.2229	RB1	R3-4	RB 8
TANKS				
De-icing	Q.1925	SA1	—	—
Fuel	—	SB1	—	—
SCHEDULES				
Cable chart (electrical)	—	T1	—	—
Cable chart (wire)	—	U1	—	—
Pipe chart	—	V1	—	—

RESTRICTED

AIR MINISTRY

AMENDMENT LIST No. 2
TO
AIR PUBLICATION No. 4505C.
VOLUME 3, PART 1
SCHEDULE OF SPARE PARTS
1st Edition Published March 1963
(Complete in 98 Sheets)
Date of Issue: April 1964

VULCAN MK. IA

CANCEL PAGES NUMBERED:—AA. 1, AA. 2, AA. 9 to AA. 14, AA. 21 to AA. 36, AA. 39 to AA. 62, AC. 1 to AC. 4, GA. 1 to GA. 4, JF. 1 to JF. 10, Plate J. 23, Plate J. 24, KJ. 1 to KJ. 4, QA. 1 to QA. 22, QW. 1, QW. 2, Plate Q. 59, W. 1, W. 2, W. 9 to W. 18, W. 59, W. 60, W. 67 to W. 70, W. 79 to W. 90, W. 95, W. 96, W. 123, W. 124, W. 129 to W. 154, X. 3 to X. 14.

INSERT THE FOLLOWING NEW PAGES ISSUED HERewith IN PAGE NUMBER ORDER:—AA. 1, AA. 2, AA. 9 to AA. 14, AA. 21 to AA. 36, AA. 39 to AA. 62, AC. 1 to AC. 4, GA. 1 to GA. 4, Plate G. 1, JF. 1 to JF. 10, Plate J. 23, Plate J. 24, Plate J. 24A, KJ. 1 to KJ. 4, QA. 1 to QA. 22, Plates Q. 1 to Q. 9 (to follow page QA. 52), QW. 1, QW. 2, Plate Q. 59, W. 1, W. 2, W. 9 to W. 18, W. 59, W. 60, W. 67 to W. 70, W. 79 to W. 90, W. 95, W. 96, W. 123, W. 124, W. 129 to W. 154, X. 3 to X. 14.

*Embedded
21/10/65
JHU*

RESTRICTED

This file was downloaded
from the RTFM Library.

Link: www.scottbouch.com/rtfm

Please see site for usage terms,
and more aircraft documents.

