

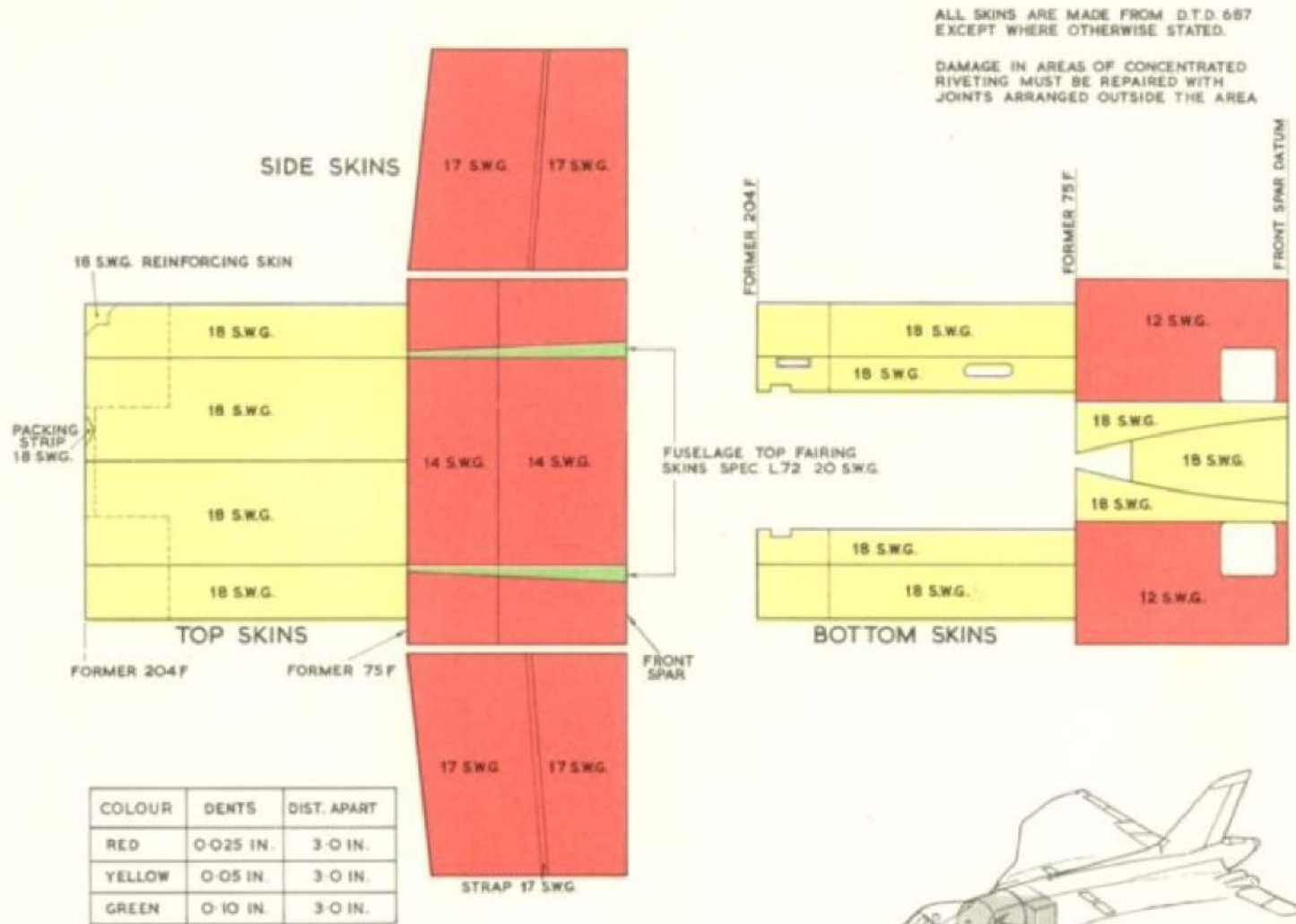
Chapter 3

MAIN PLANES

LIST OF CONTENTS

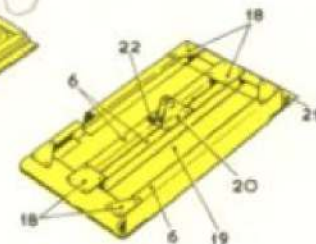
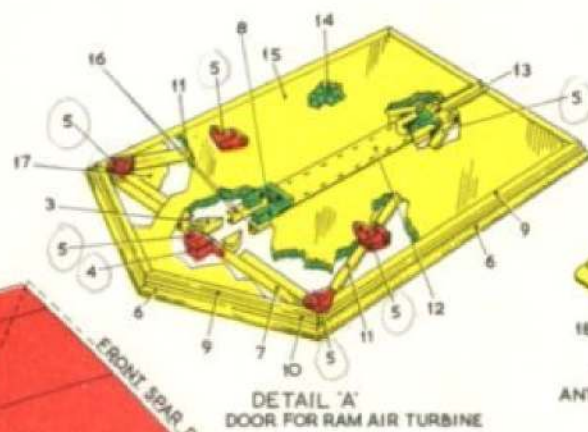
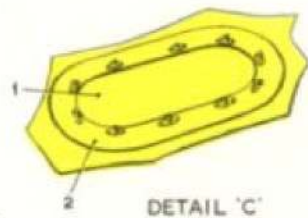
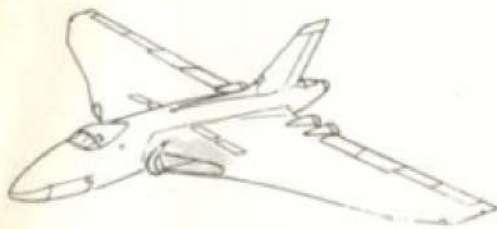
(To be issued later)

RESTRICTED

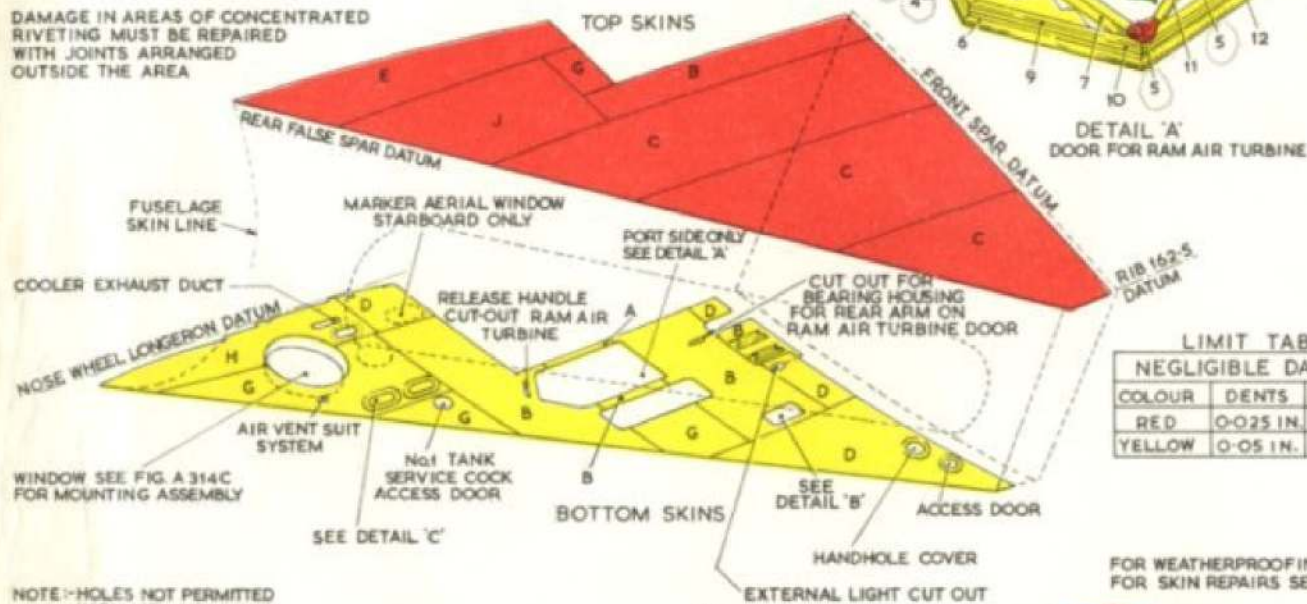


FOR SKIN REPAIRS SEE FIG. 103-104-116-117

FIG. A 305. No.1 & 2 Tank bays - skinning  
**RESTRICTED**



DAMAGE IN AREAS OF CONCENTRATED RIVETING MUST BE REPAIRED WITH JOINTS ARRANGED OUTSIDE THE AREA



DETAIL 'B' ANTI-ICING AIR EXTRACTION DOOR

NOTE - HOLES NOT PERMITTED IN TUNNEL SKINS AND BUTT STRAPS

SKIN REFERENCE

LETTER	SPEC.	S. W. G.
A	L.72	12
B	L.72	14
C	L.73	14
D	L.72	16
E	D.T.D.626	16
F	L.72	17
G	L.72	18
H	D.T.D.626	18
J	L.72	20

LIMIT TABLE

NEGLECTIBLE DAMAGE

COLOUR	DENTS	DIST APART
RED	0.025 IN.	3.0 IN.
YELLOW	0.05 IN.	3.0 IN.

FOR WEATHERPROOFING SEE TEXT IN CHAP. 1 AND 3  
FOR SKIN REPAIRS SEE FIG. 103, 104 AND 116

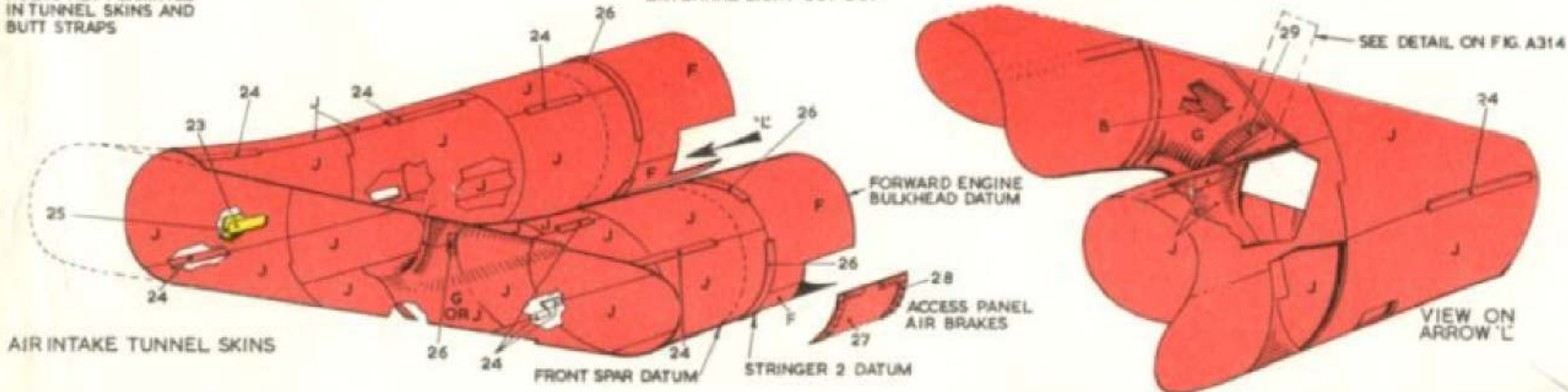


Fig. A314A. Air intake structure skinning (Post Mod.1682)

RESTRICTED

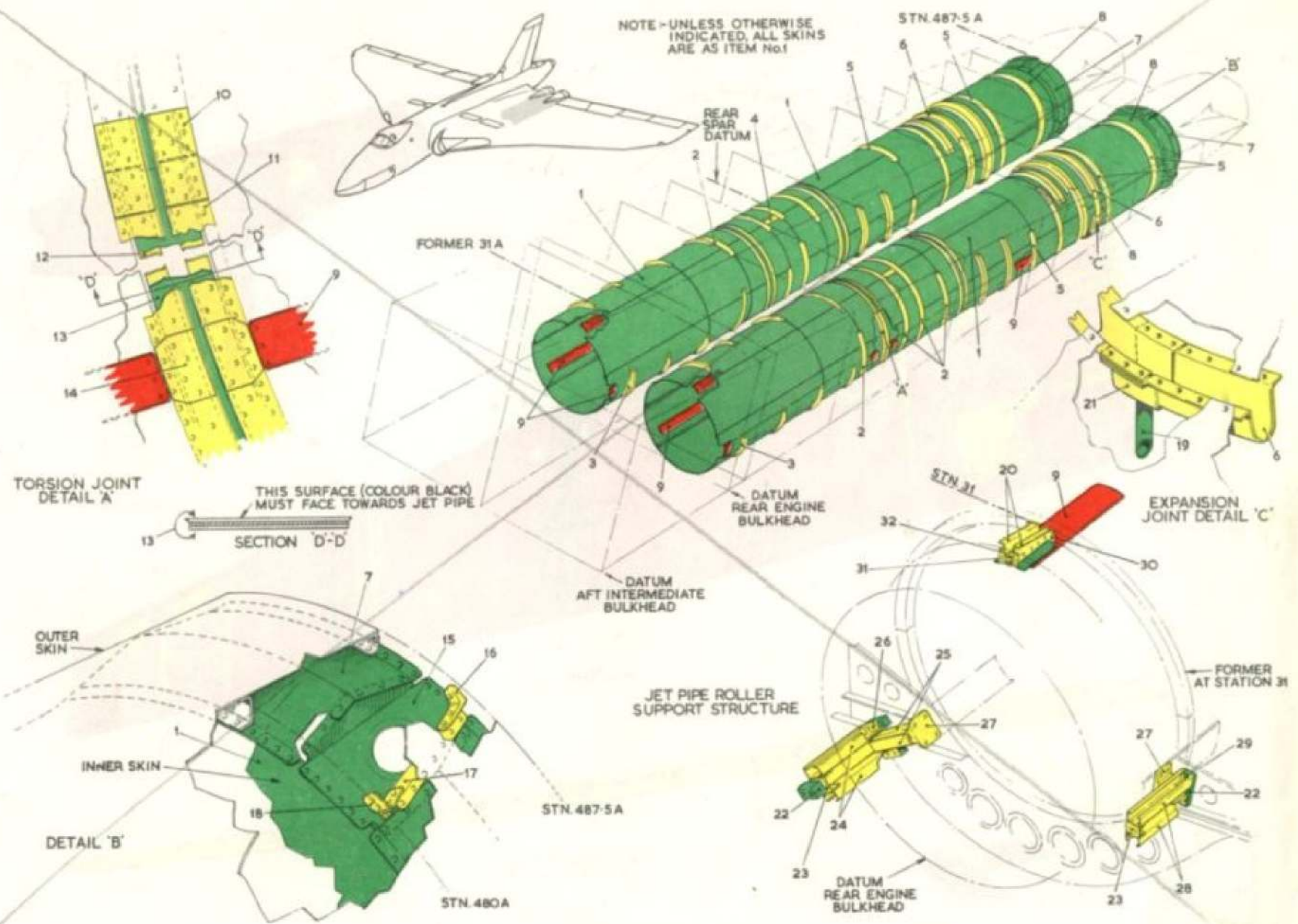


Fig. A 319. Jet pipe tunnels (Post Mod. 855 and 1392)

**RESTRICTED**

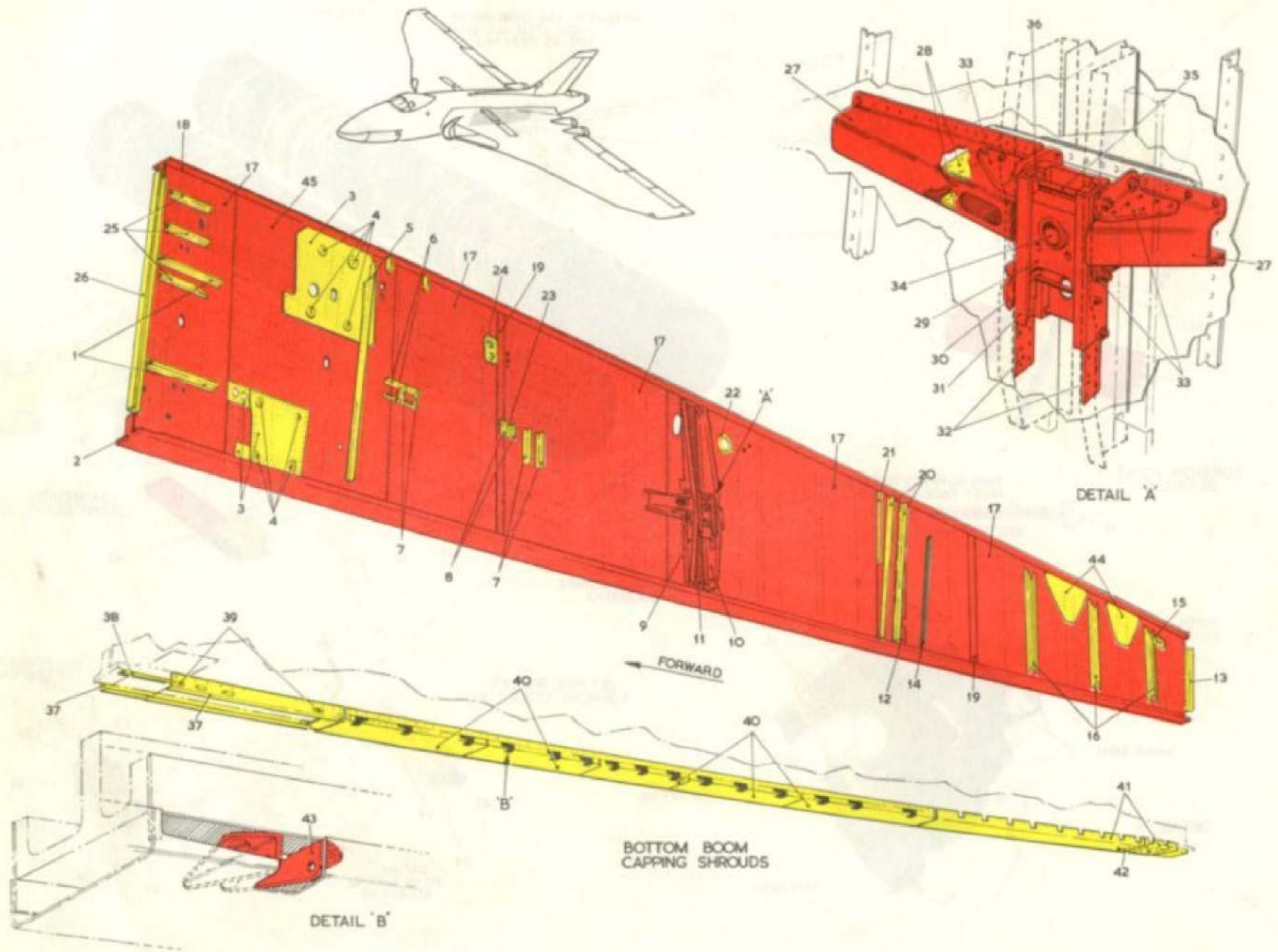
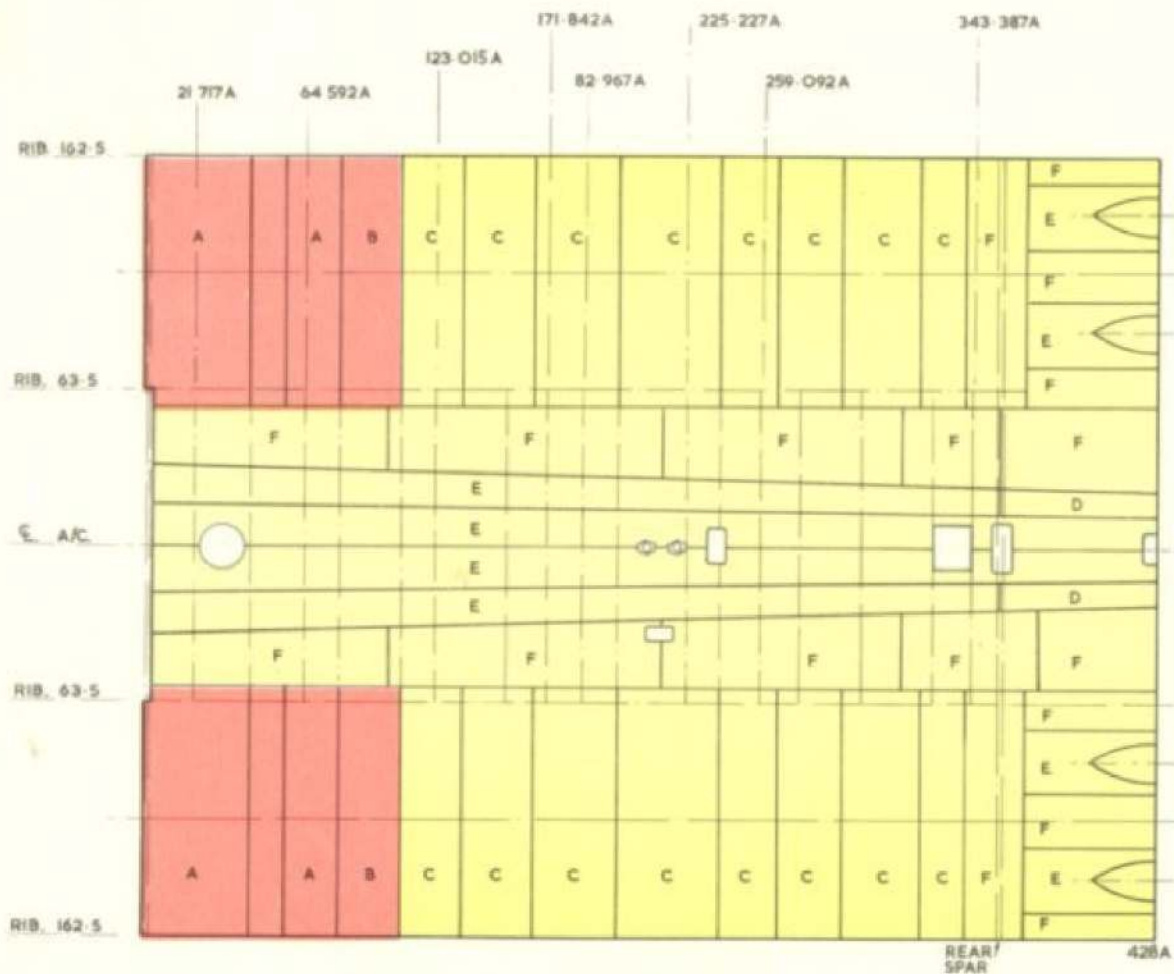


Fig. A320. Inboard engine rib - outboard face - port (Post Mod. 729 and 906)

**RESTRICTED**



SKIN REFERENCE

LETTER	S. W. G.	MAT. SPEC.
A	14	DTD. 687
B	17	DTD. 687
C	17	DTD. 626
D	18	DTD. 687
E	20	L. 72
F	20	DTD. 687

LIMIT TABLE

NEGLECTIBLE DAMAGE		
COLOUR	DENTS	DIST. APART
RED	0.05 IN.	3.0 IN.
YELLOW	0.10 IN.	2.5 IN.
GREEN	—	—

NOTE:— DAMAGE IN AREAS OF CONCENTRATED RIVETING IS TO BE REPAIRED WITH JOINTS ARRANGED OUTSIDE THE AREA.  
SEE TEXT IN CHAP 1 FOR WEATHERPROOFING FOR METHOD OF REPAIR SEE FIG. 103, 116, & 117

NOTE:— WHEN PANELS ITEM 'C' REQUIRE REPLACEMENT NEW PANELS ARE TO BE SPEC. L.72 18 SWG.

WHEN REPLACING A SKIN PANEL OR PANELS BETWEEN RIBS 63.5 AND 162.5 OR WHEN EMBODYING MOD. 895 AND 994 REFER TO PART I, CHAP. 3, PARA. 324 AND 325 FOR JACKING INSTRUCTIONS.

NOTE:— FOR BOTTOM SURFACE SKINNING BETWEEN REAR SPAR AND STATION 428A REFER TO FIG. 312

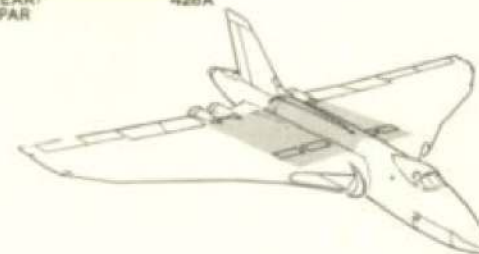
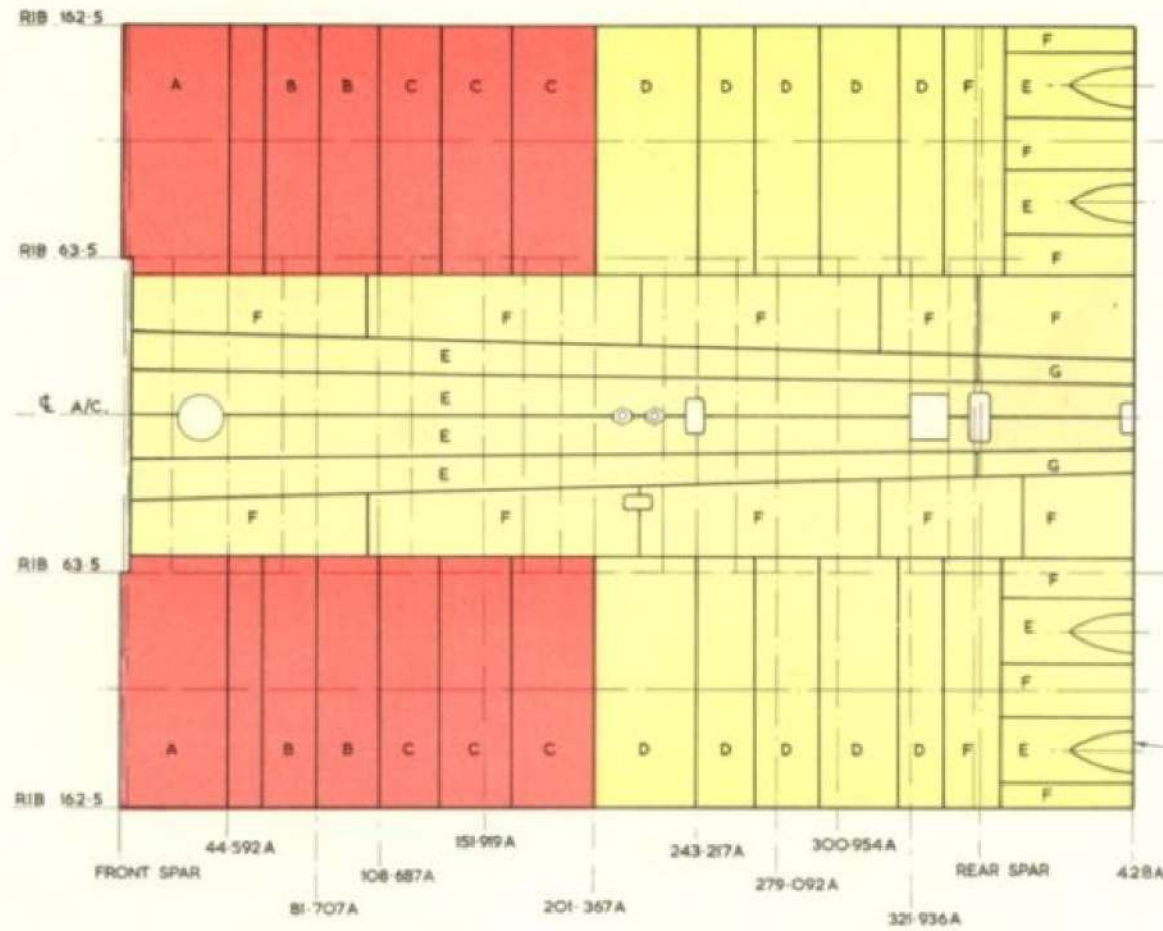
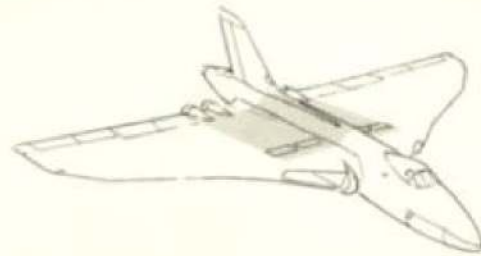


FIG. A 323. Centre section skinning—top surface (Pre Mod. 895 & 994)

RESTRICTED



**SKIN REFERENCE**

LETTER	S. W. G.	MAT. SPEC.
A	12	D.T.D. 687
B	12	L. 73
C	14	L. 73
D	18	L. 72
E	20	L. 72
F	20	D.T.D. 687
G	18	D.T.D. 687

**SKIN LIMITS**

NEGLECTIBLE DAMAGE		
COLOUR	DENTS	DIST. APART
RED	0.05 IN.	3.0 IN.
YELLOW	0.10 IN.	2.0 IN.
GREEN	—	—

NOTE:— DAMAGE IN AREAS OF CONCENTRATED RIVETING IS TO BE REPAIRED WITH JOINTS ARRANGED OUTSIDE THE AREA.  
 SEE TEXT IN CHAR 1 AND 3. FOR WEATHERPROOFING.  
 FOR METHOD OF REPAIR SEE FIG. 103, 116, & 117

FOR BOTTOM SURFACE SKINNING BETWEEN REAR SPAR AND STATION 428A REFER TO FIG. 312  
 WHEN REPLACING A SKIN PANEL OR PANELS BETWEEN RIBS 63.5 AND 162.5 REFER TO PART 1, CHAP. 3, PARA. 324 AND 325 FOR JACKING INSTRUCTIONS.

FIG. A 323. Centre section skinning-top surface (Mod. 895 & 994 embodied)

**RESTRICTED**

DAMAGE IN AREAS OF CONCENTRATED RIVETING  
MUST BE REPAIRED WITH JOINTS ARRANGED  
OUTSIDE THE AREA

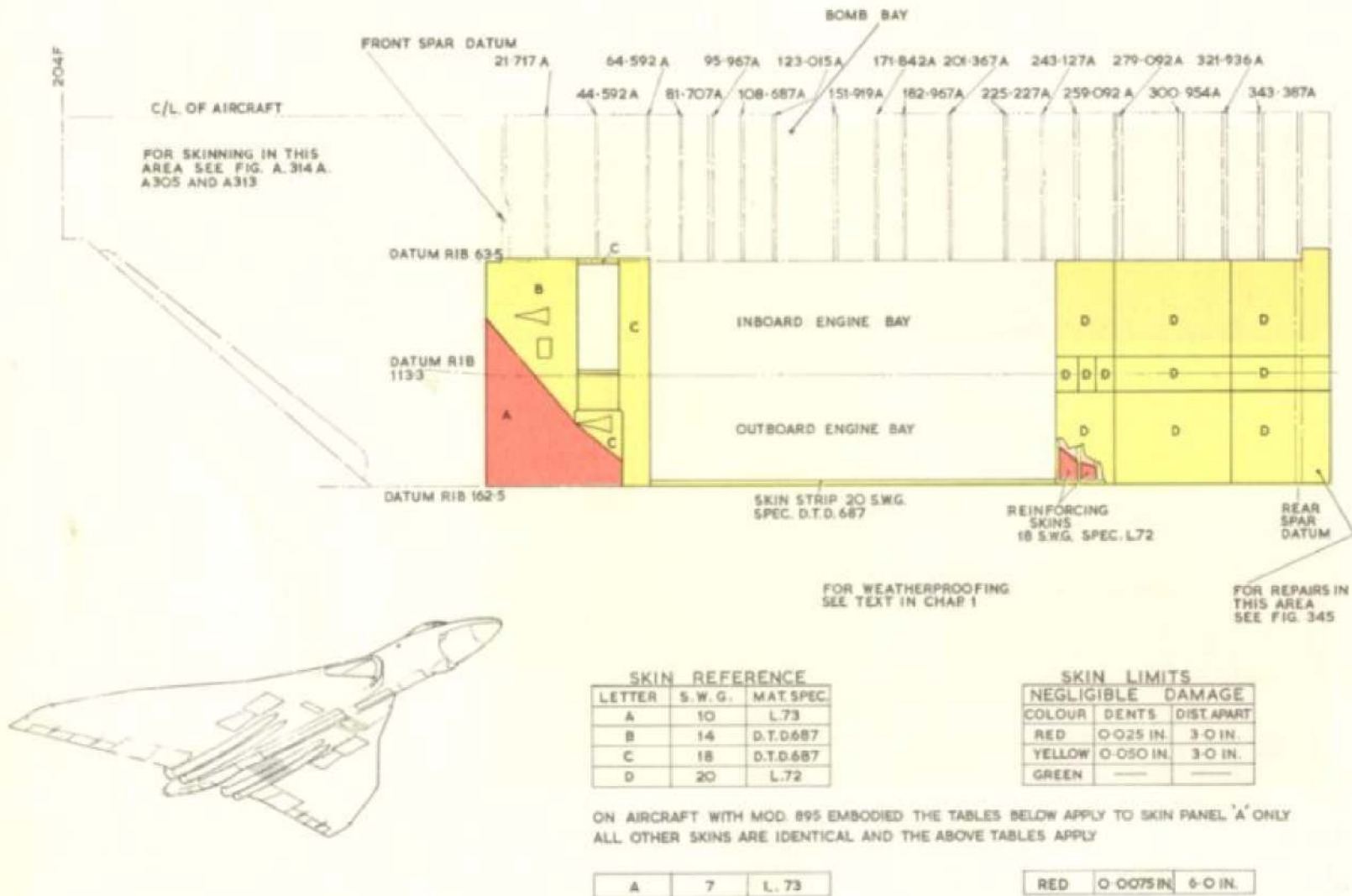
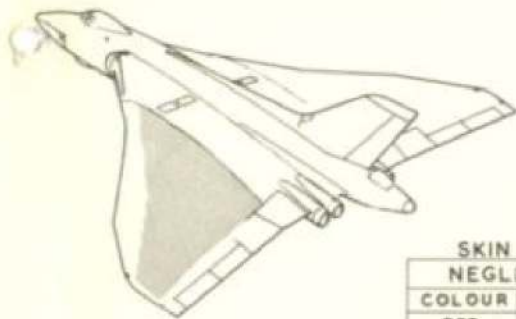


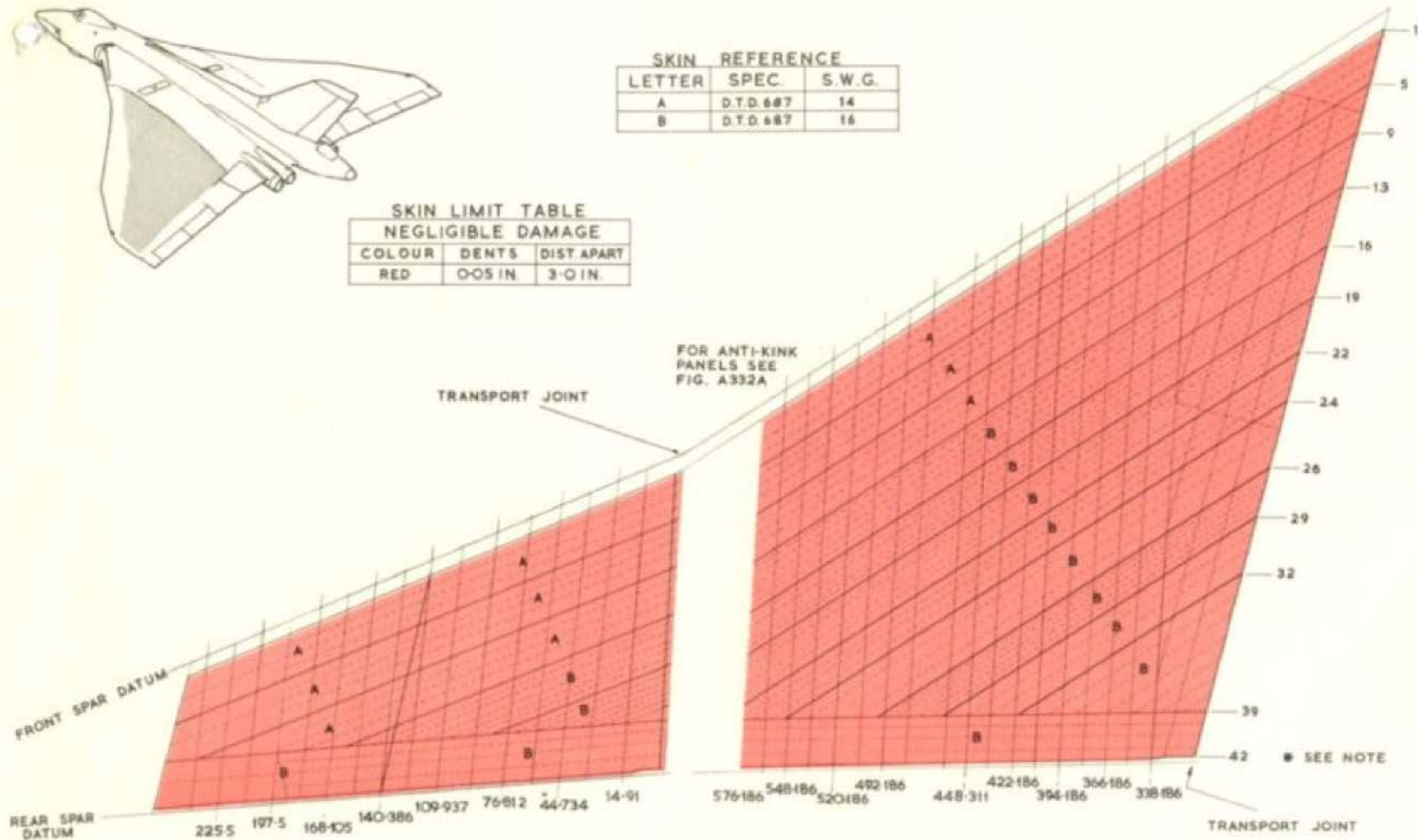
FIG. A 323A. Centre section skinning bottom surface

**RESTRICTED**



SKIN REFERENCE		
LETTER	SPEC.	S.W.G.
A	D.T.D. 687	14
B	D.T.D. 687	16

SKIN LIMIT TABLE NEGLECTIBLE DAMAGE		
COLOUR	DENTS	DIST APART
RED	0.05 IN.	3.0 IN.



STRINGER REFERENCE

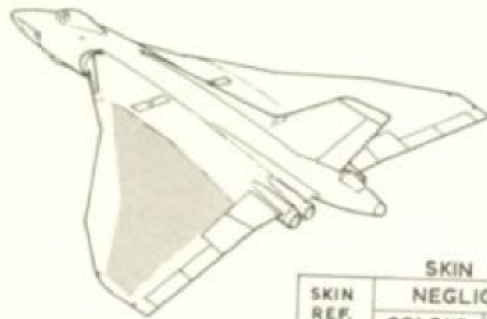
STRINGER No.	SECTION	REPAIR FIG.
1, 5, 9, 13, 16, 19, 22, 24, 26, 29, 32, 39.	301/553075	A373 AND A373A
REMAINDER	302/553075	A 372

\* NOTE :- STRINGERS ARE NUMBERED CONSECUTIVELY 1-42. INTERMEDIATE STRINGERS BETWEEN 13 AND 29 ARE IDENTIFIED BY THE SUFFIX 'a' TO THE PRECEDING STRINGER NUMBER.

FOR WEATHERPROOFING SEE TEXT IN CHAPS. 1 AND 3.  
FOR SKIN REPAIRS SEE FIG. 103 AND 104.

FIG. A 332. Top skins-outer wing (Pre.Mod. 894)

RESTRICTED



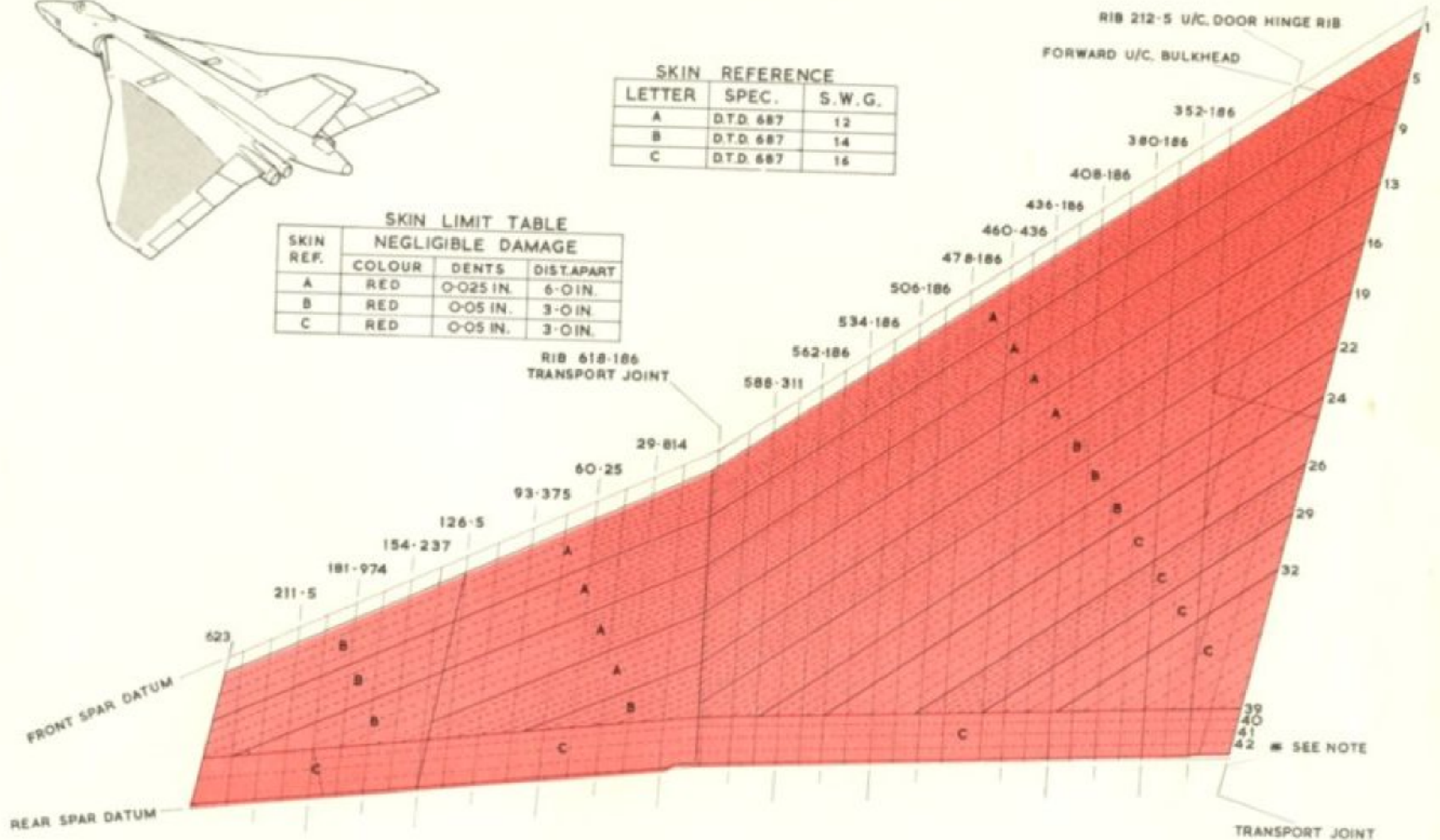
**SKIN REFERENCE**

LETTER	SPEC.	S.W.G.
A	D.T.D. 687	12
B	D.T.D. 687	14
C	D.T.D. 687	16

**SKIN LIMIT TABLE**

NEGLIGIBLE DAMAGE

SKIN REF.	COLOUR	DENTS	DIST. APART
A	RED	0.025 IN.	6.0 IN.
B	RED	0.05 IN.	3.0 IN.
C	RED	0.05 IN.	3.0 IN.



**STRINGER REFERENCE**

STRINGER No.	SECTION	REPAIR FIG.
1, 5, 9, 13, 16, 19, 22, 24	588/553075	A 371
26, 29, 32, 39	301/553075	A373 - A373A
REMAINDER	302/553075	A 372

NOTE :- STRINGERS ARE NUMBERED CONSECUTIVELY 1-42. INTERMEDIATE STRINGERS BETWEEN 1 AND 29 ARE IDENTIFIED BY THE SUFFIX 'a' TO THE PRECEDING STRINGER NUMBER.

FOR WEATHERPROOFING SEE TEXT IN CHAPS. 1 AND 3  
FOR SKIN REPAIRS SEE FIG. 103 AND 104

FIG. A 332 A.-Top skins outer wing (Mod. 894 embodied)

RESTRICTED

## KEY TO FIG.A334B

Item	Material		Description	Depth	Negligible Damage			Repair Fig.
	Spec.	S.W.G. or Section			Dents	Holes	Pitch Ratio	
					Dist. Apart	Dia.		
1	Alum.foil	SS.4275	Honeycomb	-	-	-	-	-
2	L.72	58/SS.7000	Forward edge member	0.025	4.0	-	-	-
3	L.72	28	Inner skin	0.025	6.0	-	-	-
4	L.72	24	Outer skin	0.025	6.0	-	-	-
5	L.72	18	Channel member	0.025	4.0	0.125	15:1	-
6	L.72	18	Channel member	0.025	4.0	0.125	15:1	-
7	L.72	18	End member	0.025	4.0	-	-	-
8	L.72	57/SS.7000	Trailing edge member	0.025	4.0	-	-	-
9	D. T. D. 622	489/SS.3075	Reinforcing member	0.025	4.0	-	-	-
10	L.72	18	Reinforcing strip	x 0.05	4.0	0.125	8:1	-
11	L.72	16	Reinforcing strip	0.025	4.0	0.125	15:1	-
12	L.72	28	Packing	x -	-	-	-	-

x More expedient to renew than repair.  
All dimensions are quoted in inches

RESTRICTED

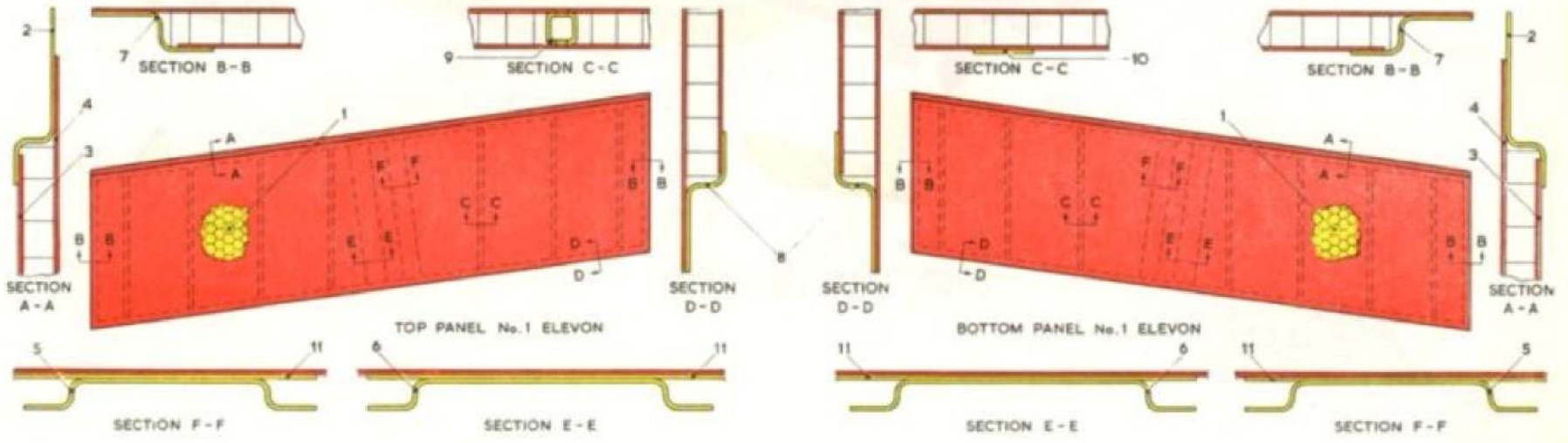
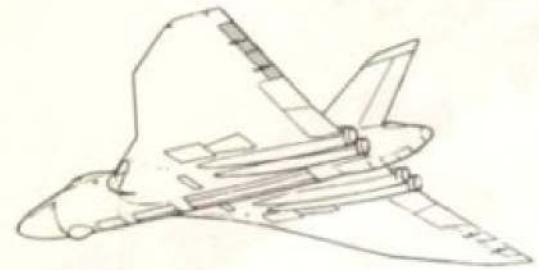
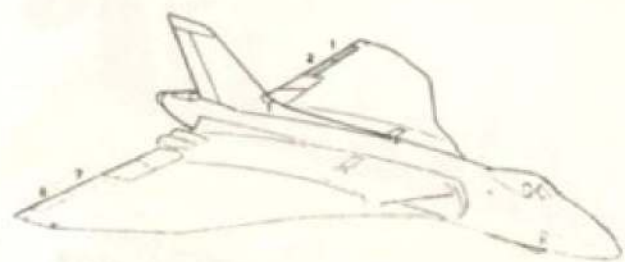
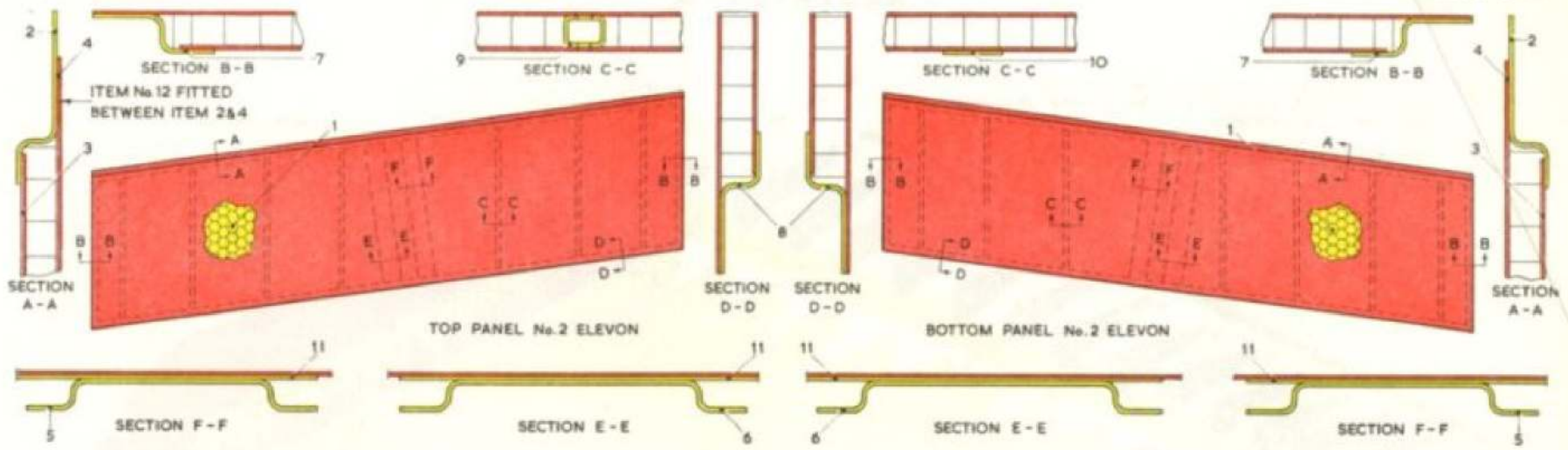


FIG. A 334 B. No. 1 & 2 elevon panels (7 and 8 opposite hand)

RESTRICTED

NOTE - PREFIX IDENTICAL LETTERS AT RIB STATIONS  
INDICATE THAT SIMILAR MATERIALS AND SECTIONS  
ARE USED ON ASSEMBLY  
No. 5 ELEVEN OPPOSITE HAND

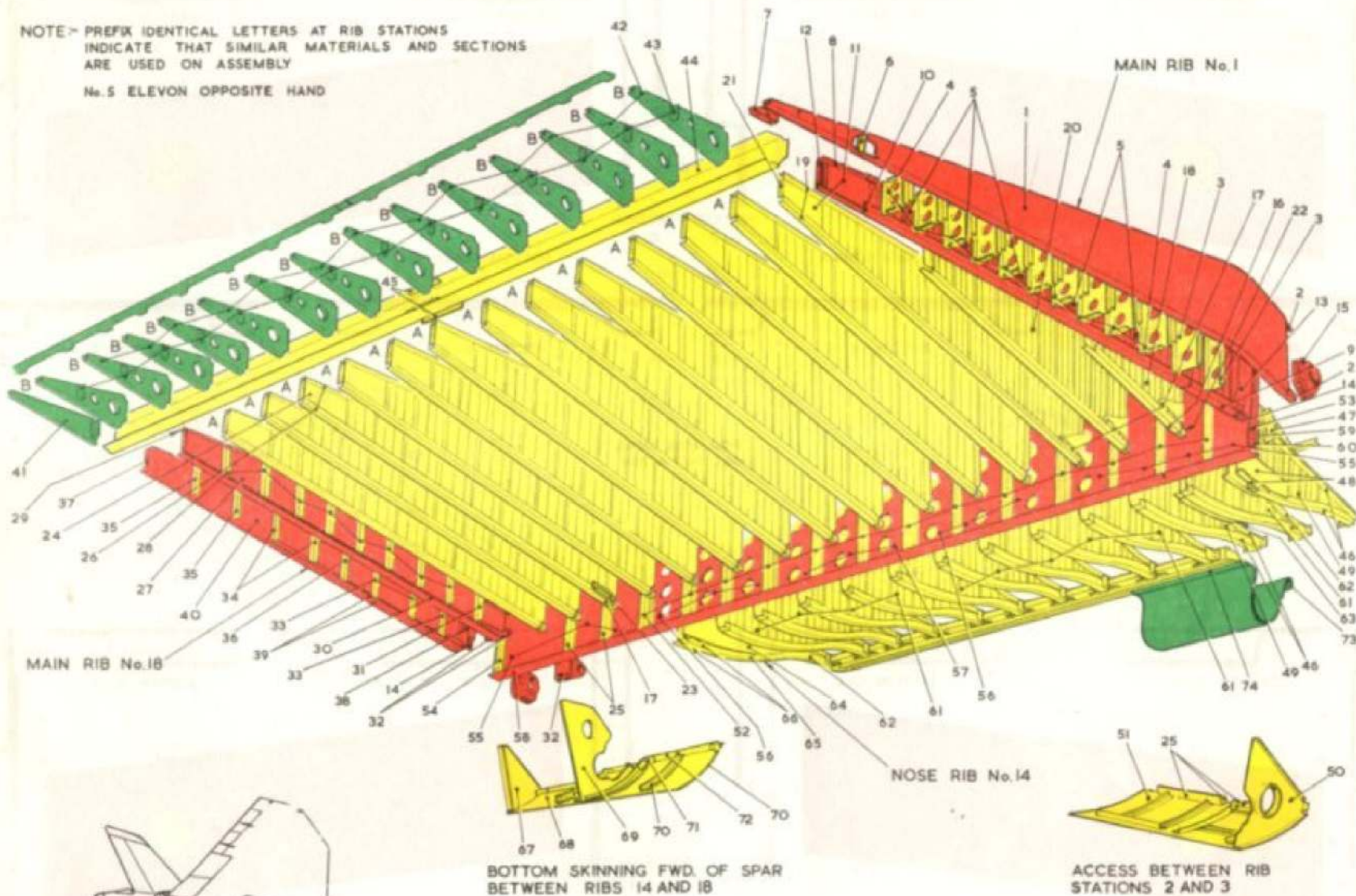
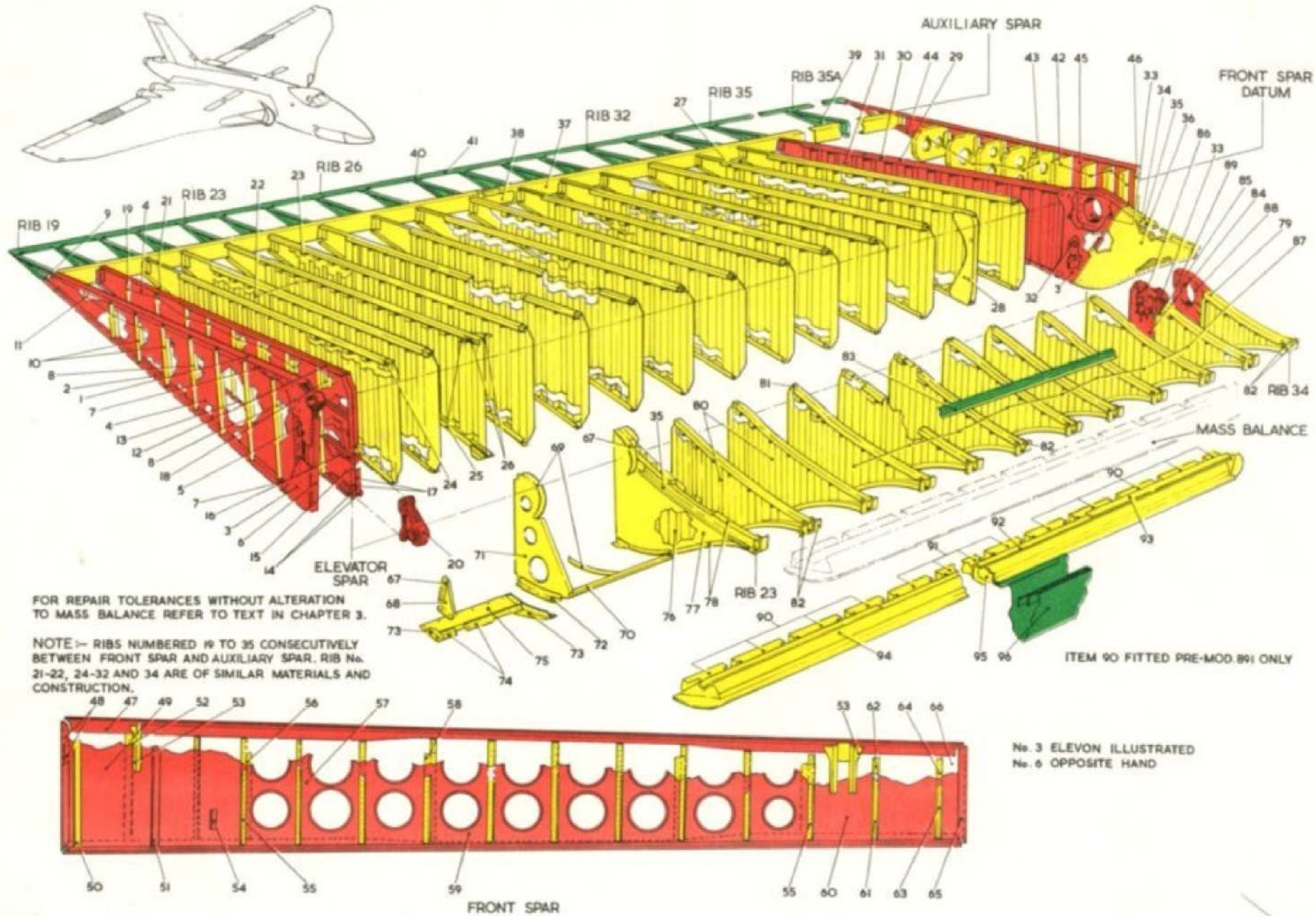


Fig. A335 Inboard elevator - No. 4 Elevon (Post mod. 89)

RESTRICTED

37  
Sketch  
8/2

**RESTRICTED**



FOR REPAIR TOLERANCES WITHOUT ALTERATION TO MASS BALANCE REFER TO TEXT IN CHAPTER 3.

NOTE - RIBS NUMBERED 19 TO 35 CONSECUTIVELY BETWEEN FRONT SPAR AND AUXILIARY SPAR. RIB No. 21-22, 24-32 AND 34 ARE OF SIMILAR MATERIALS AND CONSTRUCTION.

Fig. A335A Outboard elevator - No.3 elevon (No. 6 opposite hand)

**RESTRICTED**

*37*  
*9/2*  
*9/2*

FOR REPAIRS SEE FIG. 103 AND FIG. 104  
 DAMAGE IN AREAS OF CONCENTRATED  
 RIVETING MUST BE REPAIRED WITH  
 JOINTS ARRANGED OUTSIDE THE AREA

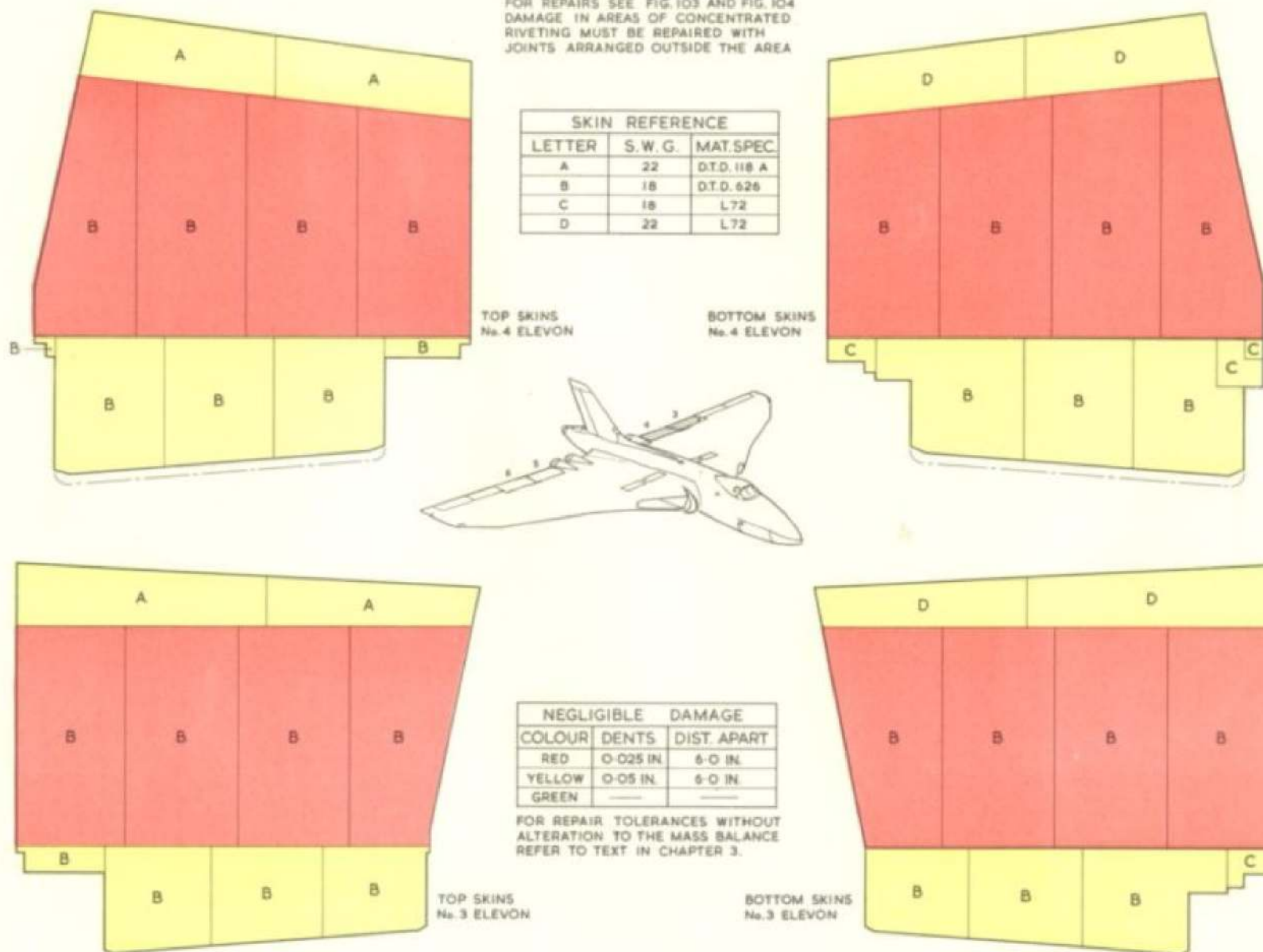


FIG. A 335B. No. 3 & 4 elevon skins (No. 5 & 6 opposite hand)

**RESTRICTED**



NOTE :-  
FOR WEATHERPROOFING OF COMBINED  
STRINGER AND SKIN REPAIR SEE TEXT  
IN PART 1, CHAP. 1

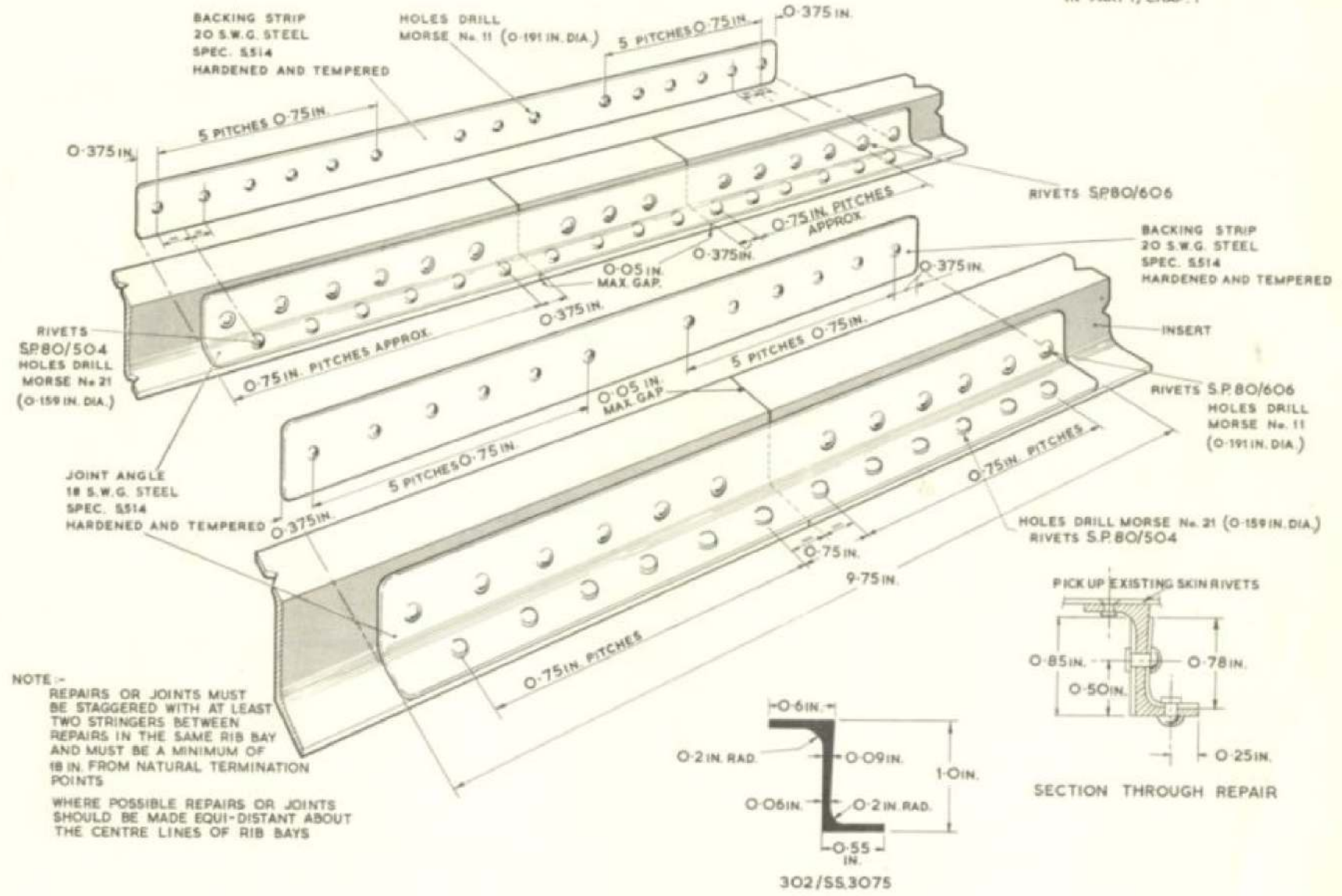
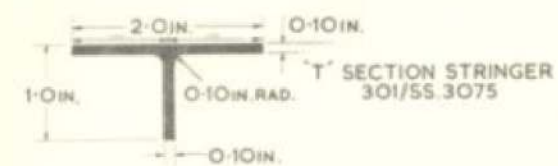
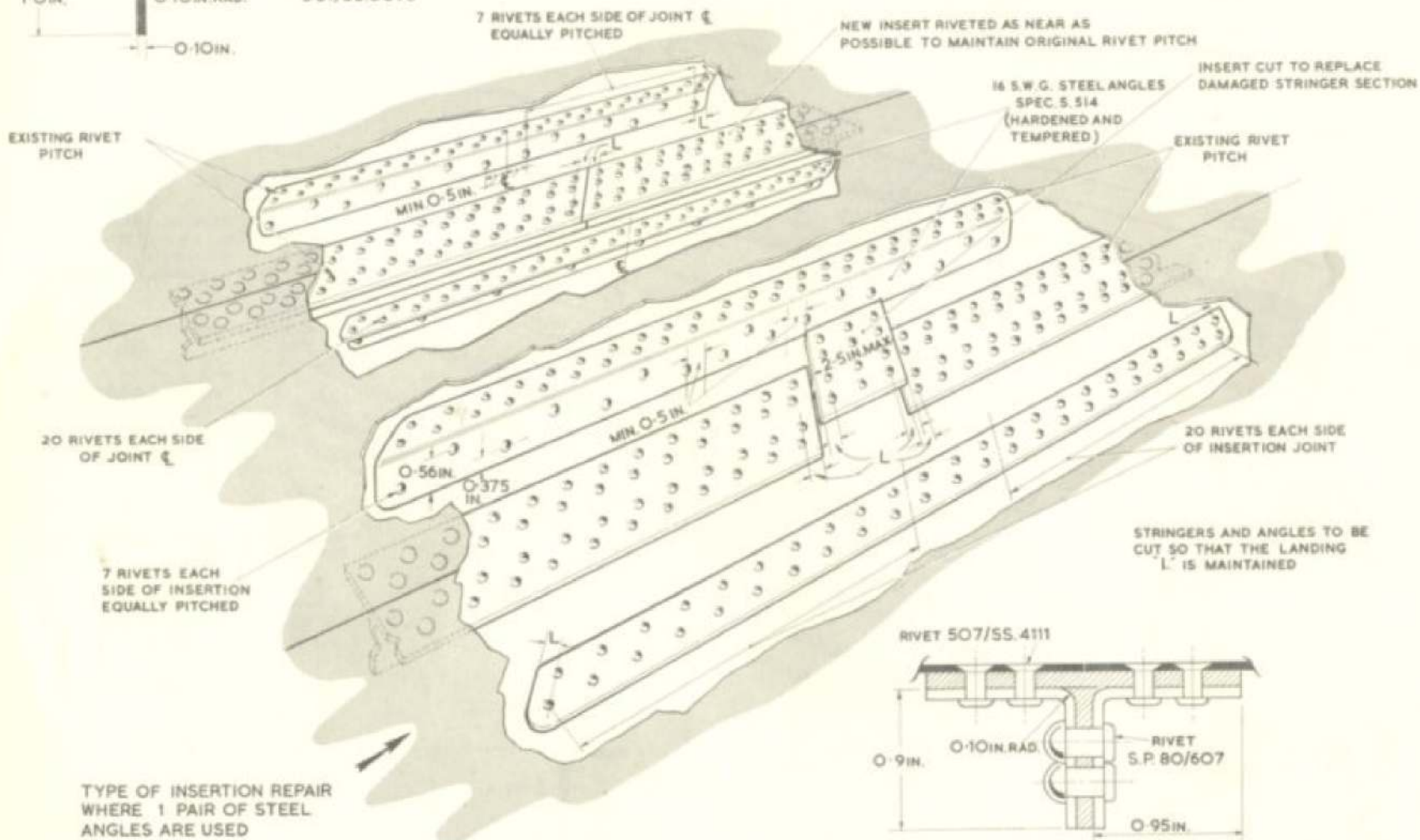


FIG. A 372. Z section stringer repair (302 SS. 3075)

RESTRICTED



NOTE- THIS REPAIR IS APPLICABLE TO AREAS WHERE 5/32 IN. RIVETS ARE USED FOR SKIN ATTACHMENT



NOTE- FOR WEATHERPROOFING OF COMBINED STRINGER AND SKIN REPAIRS SEE TEXT IN PART 1, CHAPTER 1.

$$L = \frac{1}{2} \text{ EXISTING RIVET PITCH}$$

SECTION THROUGH REPAIR

FIG. A373. T Section stringers - insertion repairs (301/SS.3075)

**RESTRICTED**

NOTE:- THIS REPAIR IS APPLICABLE WHERE 3/16 IN. RIVETS ARE USED FOR SKIN ATTACHMENT.

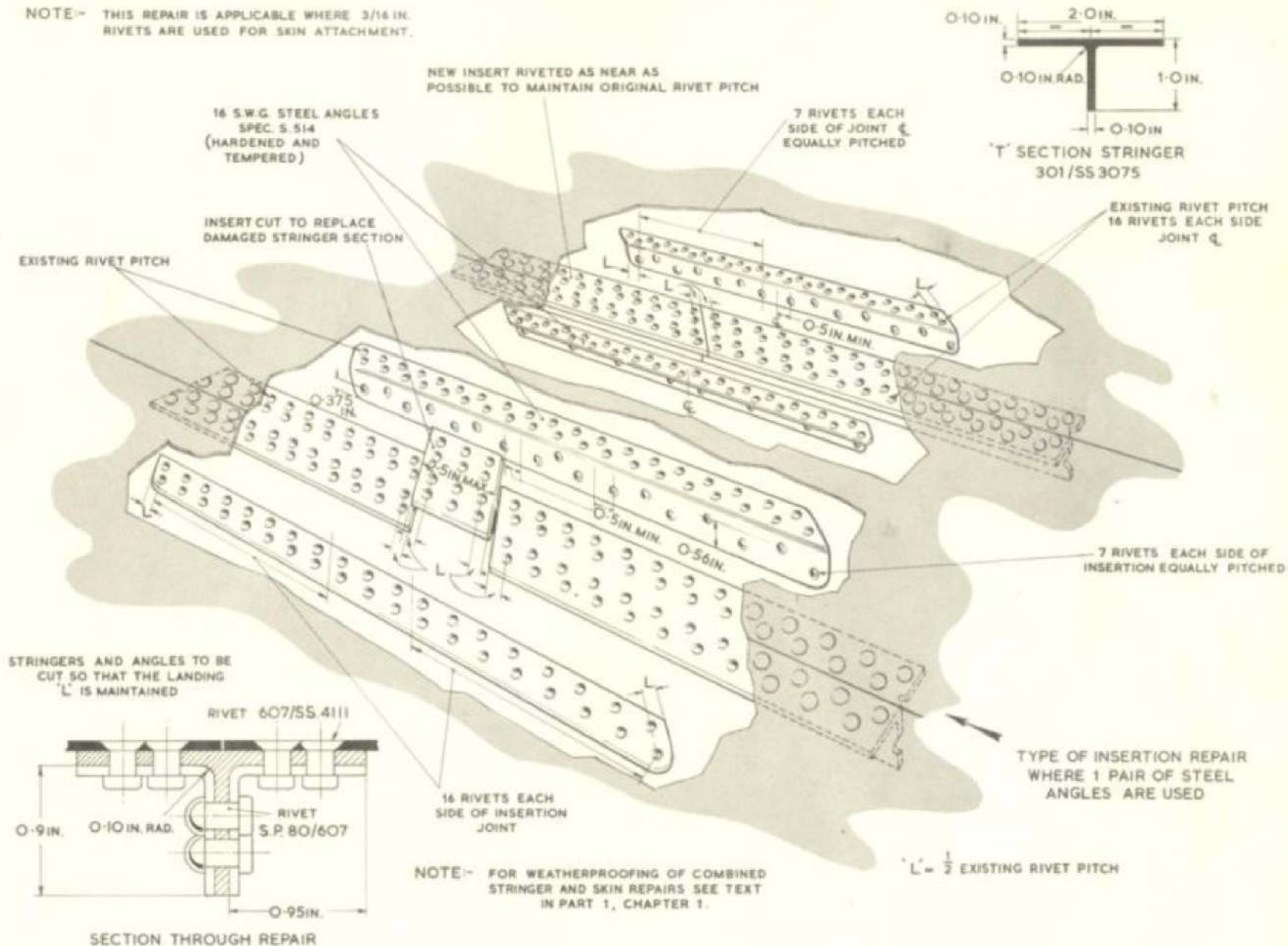


FIG. A 373A. 'T' Section stringers - insertion repairs (301/SS.3075)

RESTRICTED



This file was downloaded  
from the RTFM Library.

Link: [www.scottbouch.com/rtfm](http://www.scottbouch.com/rtfm)

Please see site for usage terms,  
and more aircraft documents.