

### Chapter 3

## MAIN PLANES

### LIST OF ILLUSTRATIONS

|  | <i>Fig.</i> |
|--|-------------|
| <i>Nose wheel door ... ..</i>                                    | 301         |
| <i>Bomb door hinges ... ..</i>                                   | 302         |
| <i>Bomb door hinges ... ..</i>                                   | 302A        |
| <i>Bomb door mechanism ... ..</i>                                | 302B        |
| <i>Bomb door mechanism ... ..</i>                                | 302C        |
| <i>Bomb door mechanism ... ..</i>                                | 302D        |
| <i>Main undercarriage door hinges<br/>and catch hooks ... ..</i> | 303         |
| <i>Main undercarriage door mechanism</i>                         | 303A        |
| <i>Main undercarriage door mechanism</i>                         | 303B        |
| <i>Elevator and aileron hinges... ..</i>                         | 304         |
| <i>Air brake mechanism ... ..</i>                                | 305         |
| <i>Air brake mechanism ... ..</i>                                | 305A        |
| <i>Air brake mechanism ... ..</i>                                | 305B        |

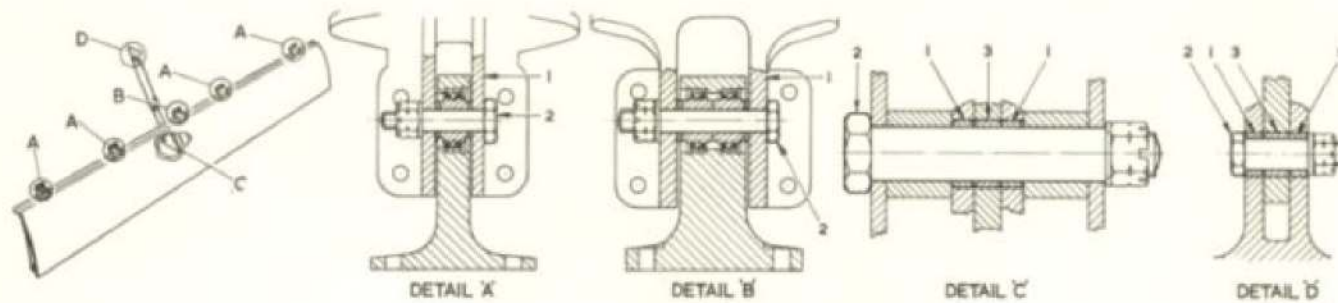


Fig.301. Nose wheel door

| Detail | Item | Part and Description | Permissible Worn Dimension (in.) |                        |                    |                           | Permissible Worn Clearance (in.) | Remarks |
|--------|------|----------------------|----------------------------------|------------------------|--------------------|---------------------------|----------------------------------|---------|
|        |      |                      | Dimension New (in.)              | Non-selective Assembly | Selective Assembly | Clearance New (in.)       |                                  |         |
| A      | 1    | HINGE BRACKET (bore) | $\frac{0.25025}{0.24975}$        | 0.251                  | 0.252              | $\frac{0.00225}{0.00075}$ | 0.003                            |         |
|        | 2    | BOLT (o/dia.)        | $\frac{0.249}{0.248}$            | 0.248                  | 0.24675            |                           |                                  |         |
| B      | 1    | HINGE BRACKET (bore) | $\frac{0.25025}{0.24975}$        | 0.2508                 | 0.25125            | $\frac{0.00095}{0.00000}$ | 0.0015                           |         |
|        | 2    | BOLT (o/dia.)        | $\frac{0.24975}{0.2493}$         | 0.2493                 | 0.24825            |                           |                                  |         |
| C      | 1    | BUSH (bore)          | $\frac{0.62525}{0.62475}$        | 0.62575                | 0.62725            | $\frac{0.003}{0.001}$     | 0.0035                           |         |
|        | 2    | BOLT (o/dia.)        | $\frac{0.62375}{0.62225}$        | 0.62225                | 0.62125            |                           |                                  |         |
|        | 3    | BUSH (bore)          | $\frac{0.62575}{0.6245}$         | 0.62625                | 0.62775            | $\frac{0.0035}{0.00075}$  | 0.004                            |         |
|        | 2    | BOLT (o/dia.)        | $\frac{0.62375}{0.62225}$        | 0.62225                | 0.6205             |                           |                                  |         |
| D      | 1    | BUSH (bore)          | $\frac{0.37525}{0.37475}$        | 0.376                  | 0.377              | $\frac{0.00225}{0.00075}$ | 0.003                            |         |
|        | 2    | BOLT (o/dia.)        | $\frac{0.374}{0.373}$            | 0.373                  | 0.37175            |                           |                                  |         |
|        | 3    | BUSH (bore)          | $\frac{0.3755}{0.3745}$          | 0.3765                 | 0.3775             | $\frac{0.0025}{0.0005}$   | 0.0035                           |         |
|        | 2    | BOLT (o/dia.)        | $\frac{0.374}{0.373}$            | 0.373                  | 0.371              |                           |                                  |         |

RESTRICTED

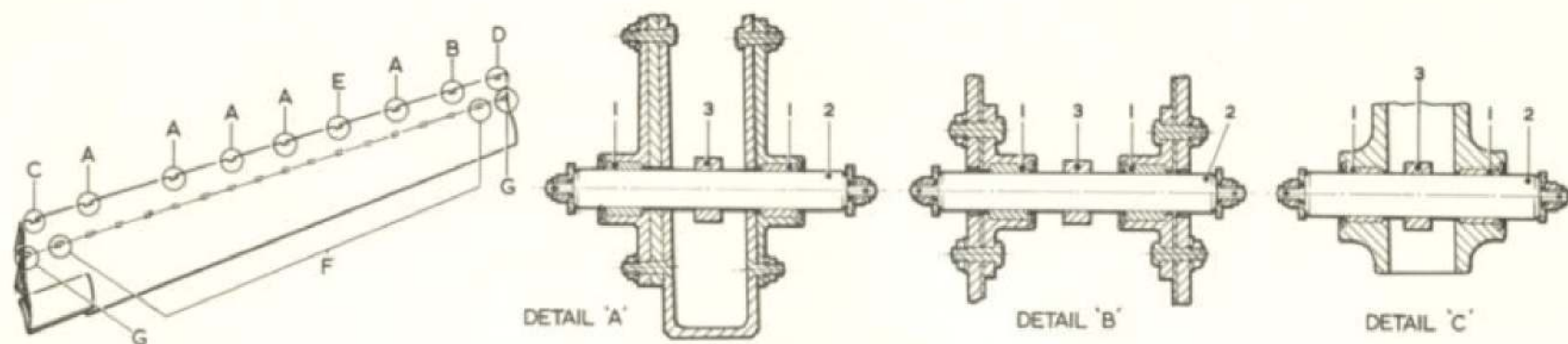


Fig.302. Bomb door hinges

| Detail | Item | Part and Description | Dimension New (in.)       | Permissible Worn Dimension (in.) |                    |                          | Permissible Worn Clearance (in.) | Remarks |
|--------|------|----------------------|---------------------------|----------------------------------|--------------------|--------------------------|----------------------------------|---------|
|        |      |                      |                           | Non-selective Assembly           | Selective Assembly | Clearance New (in.)      |                                  |         |
| A      | 1    | BUSH (bore)          | $\frac{0.7278}{0.72575}$  | 0.729                            | 0.72975            | $\frac{0.00655}{0.004}$  | 0.008                            |         |
|        | 2    | PIN (o/dia.)         | $\frac{0.72175}{0.72125}$ | 0.721                            | 0.71775            |                          |                                  |         |
|        | 3    | HINGE BLOCK (bore)   | $\frac{0.72575}{0.7245}$  | 0.727                            | 0.72775            | $\frac{0.0045}{0.00275}$ | 0.006                            |         |
|        | 2    | PIN (o/dia.)         | $\frac{0.72175}{0.72125}$ | 0.721                            | 0.7185             |                          |                                  |         |
| B      | 1    | BUSH (bore)          | $\frac{0.7278}{0.72575}$  | 0.729                            | 0.72975            | $\frac{0.00655}{0.004}$  | 0.008                            |         |
|        | 2    | PIN (o/dia.)         | $\frac{0.72175}{0.72125}$ | 0.721                            | 0.71775            |                          |                                  |         |
|        | 3    | HINGE BLOCK (bore)   | $\frac{0.72575}{0.7245}$  | 0.727                            | 0.72775            | $\frac{0.0045}{0.00275}$ | 0.006                            |         |
|        | 2    | PIN (o/dia.)         | $\frac{0.72175}{0.72125}$ | 0.721                            | 0.7185             |                          |                                  |         |
| C      | 1    | BUSH (bore)          | $\frac{0.87575}{0.8745}$  | 0.877                            | 0.87775            | $\frac{0.0045}{0.00275}$ | 0.006                            |         |
|        | 2    | PIN (o/dia.)         | $\frac{0.87175}{0.87125}$ | 0.871                            | 0.8685             |                          |                                  |         |
|        | 3    | HINGE BLOCK (bore)   | $\frac{0.87575}{0.8745}$  | 0.877                            | 0.87775            | $\frac{0.0045}{0.00275}$ | 0.006                            |         |
|        | 2    | PIN (o/dia.)         | $\frac{0.87175}{0.87125}$ | 0.871                            | 0.8685             |                          |                                  |         |

RESTRICTED

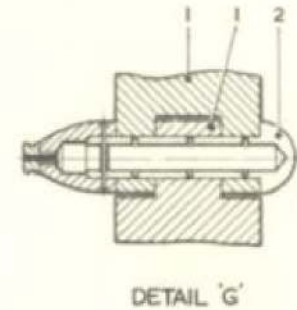
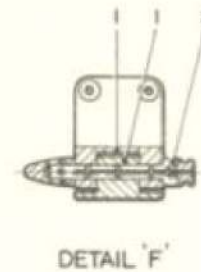
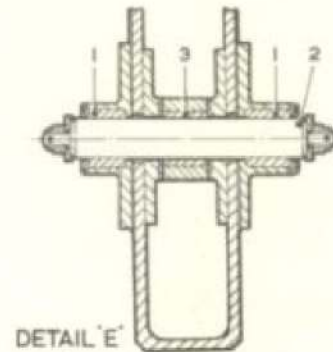
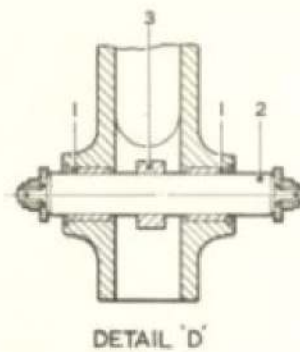


Fig.302A. Bomb door hinges

| Detail | Item | Part and Description | Dimension New (in.)       | Permissible Worn Dimension (in.) |                    | Clearance New (in.)      | Permissible Worn Clearance (in.) | Remarks |
|--------|------|----------------------|---------------------------|----------------------------------|--------------------|--------------------------|----------------------------------|---------|
|        |      |                      |                           | Non-selective Assembly           | Selective Assembly |                          |                                  |         |
| D      | 1    | BUSH (bore)          | $\frac{0.75075}{0.7495}$  | 0.752                            | 0.75275            | $\frac{0.0045}{0.00275}$ | 0.006                            |         |
|        | 2    | PIN (o/dia.)         | $\frac{0.74675}{0.74625}$ | 0.746                            | 0.7435             |                          |                                  |         |
|        | 3    | HINGE BLOCK (bore)   | $\frac{0.75075}{0.7495}$  | 0.752                            | 0.75275            | $\frac{0.0045}{0.00275}$ | 0.006                            |         |
|        | 2    | PIN (o/dia.)         | $\frac{0.74675}{0.74625}$ | 0.746                            | 0.7435             |                          |                                  |         |
| E      | 1    | BUSH (bore)          | $\frac{0.7278}{0.72575}$  | 0.729                            | 0.72975            | $\frac{0.00655}{0.004}$  | 0.008                            |         |
|        | 2    | PIN (o/dia.)         | $\frac{0.72175}{0.72125}$ | 0.721                            | 0.71775            |                          |                                  |         |
|        | 3    | BUSH (bore)          | $\frac{0.72575}{0.7245}$  | 0.727                            | 0.72775            | $\frac{0.0045}{0.00275}$ | 0.006                            |         |
|        | 2    | PIN (o/dia.)         | $\frac{0.72175}{0.72125}$ | 0.721                            | 0.7185             |                          |                                  |         |
| F      | 1    | HINGE BRACKET (bore) | $\frac{0.313}{0.312}$     | 0.314                            | 0.317              | $\frac{0.0035}{0.0000}$  | 0.005                            |         |
|        | 2    | PIN (o/dia.)         | $\frac{0.312}{0.3095}$    | 0.309                            | 0.307              |                          |                                  |         |
| G      | 1    | HINGE BRACKET (bore) | $\frac{0.75075}{0.7495}$  | 0.7515                           | 0.7525             | $\frac{0.00275}{0.0005}$ | 0.0035                           |         |
|        | 2    | PIN (o/dia.)         | $\frac{0.749}{0.748}$     | 0.748                            | 0.746              |                          |                                  |         |

RESTRICTED

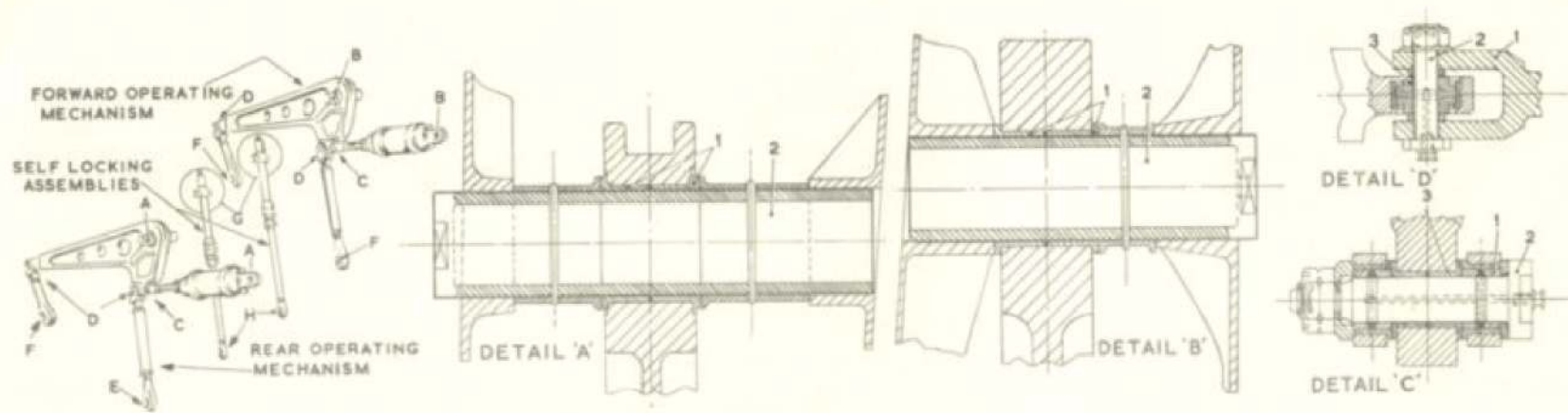


Fig.302B. Bomb door mechanism

| Detail | Item | Part and Description  | Dimension New (in.)       | Permissible Worn Dimension (in.) |                    | Clearance New (in.)        | Permissible Worn Clearance (in.) | Remarks |
|--------|------|-----------------------|---------------------------|----------------------------------|--------------------|----------------------------|----------------------------------|---------|
|        |      |                       |                           | Non-selective Assembly           | Selective Assembly |                            |                                  |         |
| A<br>B | 1    | BEARING BUSHES (bore) | $\frac{2.25125}{2.24925}$ | 2.252                            | 0.2545             | $\frac{0.0055}{0.00125}$   | 0.0065                           |         |
|        | 2    | PIN (o/dia.)          | $\frac{2.248}{2.24575}$   | 2.2455                           | 0.24275            |                            |                                  |         |
| C      | 1    | BUSH (bore)           | $\frac{1.00075}{0.9995}$  | 1.001                            | 1.00175            | $\frac{0.002}{0.00025}$    | 0.0025                           |         |
|        | 2    | BOLT (o/dia.)         | $\frac{0.99925}{0.99875}$ | 0.9985                           | 0.997              |                            |                                  |         |
|        | 3    | BUSH (bore)           | $\frac{1.00075}{0.9995}$  | 1.001                            | 1.00175            | $\frac{0.002}{0.00025}$    | 0.0025                           |         |
|        | 2    | BOLT (o/dia.)         | $\frac{0.99925}{0.99875}$ | 0.9985                           | 0.997              |                            |                                  |         |
| D      | 1    | FORK END (bore)       | $\frac{0.5005}{0.4995}$   | 0.501                            | 0.50175            | $\frac{0.00125}{-0.00025}$ | 0.002                            |         |
|        | 2    | BOLT (o/dia.)         | $\frac{0.49975}{0.49925}$ | 0.499                            | 0.4975             |                            |                                  |         |
|        | 3    | BEARING (bore)        | $\frac{0.5005}{0.4995}$   | 0.501                            | 0.50175            | $\frac{0.00125}{-0.00025}$ | 0.002                            |         |
|        | 2    | BOLT (o/dia.)         | $\frac{0.49975}{0.49925}$ | 0.499                            | 0.4975             |                            |                                  |         |

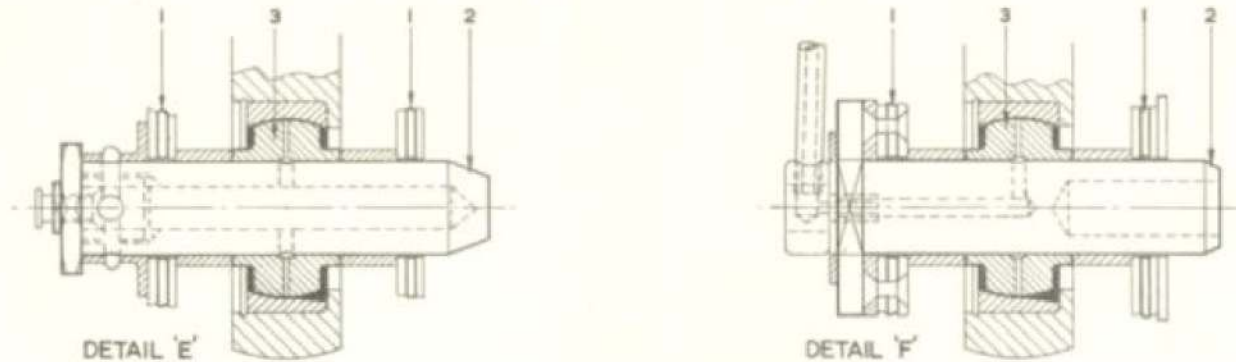


Fig.302C. Bomb door mechanism

| Detail | Item | Part and Description   | Dimension New (in.)       | Permissible Worn Dimension (in.) |                    |                          | Permissible Worn Clearance (in.) | Remarks |
|--------|------|------------------------|---------------------------|----------------------------------|--------------------|--------------------------|----------------------------------|---------|
|        |      |                        |                           | Non-selective Assembly           | Selective Assembly | Clearance New (in.)      |                                  |         |
| E      | 1    | RIB SIDE MEMBER (bore) | $\frac{0.87575}{0.8745}$  | 0.876                            | 0.87775            | $\frac{0.0035}{0.00075}$ | 0.004                            |         |
|        | 2    | PIN (o/dia.)           | $\frac{0.87375}{0.87225}$ | 0.872                            | 0.8705             |                          |                                  |         |
|        | 3    | BEARING (bore)         | $\frac{0.8755}{0.87475}$  | 0.87575                          | 0.8775             | $\frac{0.00325}{0.001}$  | 0.00375                          |         |
|        | 2    | PIN (o/dia.)           | $\frac{0.87375}{0.87225}$ | 0.872                            | 0.871              |                          |                                  |         |
| F      | 1    | RIB SIDE MEMBER (bore) | $\frac{0.87575}{0.8745}$  | 0.876                            | 0.87675            | $\frac{0.002}{0.00025}$  | 0.0025                           |         |
|        | 2    | PIN (o/dia.)           | $\frac{0.87425}{0.87375}$ | 0.8735                           | 0.872              |                          |                                  |         |
|        | 3    | BEARING (bore)         | $\frac{0.8755}{0.87475}$  | 0.876                            | 0.87675            | $\frac{0.00175}{0.0005}$ | 0.0025                           |         |
|        | 2    | PIN (o/dia.)           | $\frac{0.87425}{0.87375}$ | 0.8735                           | 0.87225            |                          |                                  |         |

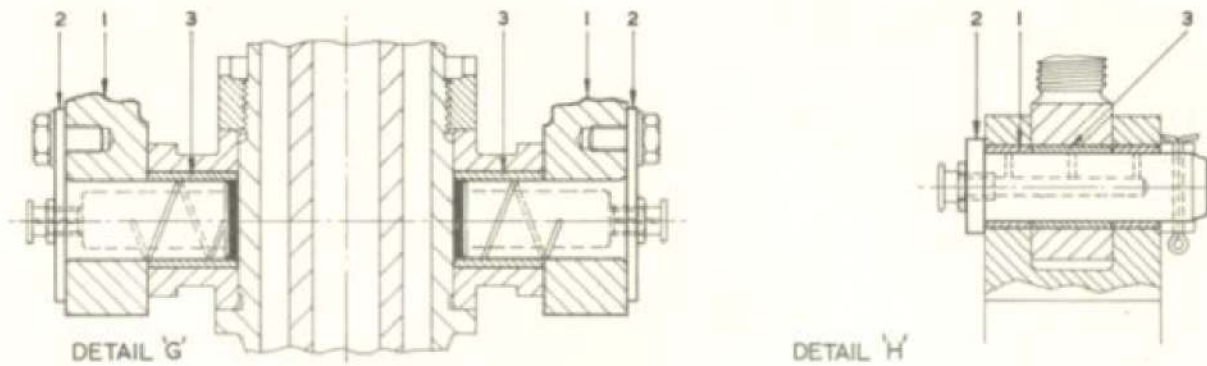


Fig.302D. Bomb door mechanism

| Detail | Item | Part and Description | Dimension New (in.)      | Permissible Worn Dimension (in.) |                    | Clearance New (in.)      | Permissible Worn Clearance (in.) | Remarks |
|--------|------|----------------------|--------------------------|----------------------------------|--------------------|--------------------------|----------------------------------|---------|
|        |      |                      |                          | Non-selective Assembly           | Selective Assembly |                          |                                  |         |
| G      | 1    | PIVOT BRACKET (bore) | $\frac{0.75075}{0.7495}$ | 0.7513                           | 0.7528             | $\frac{0.00345}{0.0007}$ | 0.004                            |         |
|        | 2    | PIN (o/dia.)         | $\frac{0.7488}{0.7473}$  | 0.7473                           | 0.7455             |                          |                                  |         |
|        | 3    | BUSH (bore)          | $\frac{0.75075}{0.7495}$ | 0.7513                           | 0.7528             | $\frac{0.00345}{0.0007}$ | 0.004                            |         |
|        | 2    | PIN (o/dia.)         | $\frac{0.7488}{0.7473}$  | 0.7473                           | 0.7455             |                          |                                  |         |
| H      | 1    | BUSH (bore)          | $\frac{0.62575}{0.6245}$ | 0.6265                           | 0.6305             | $\frac{0.00575}{0.0005}$ | 0.0065                           |         |
|        | 2    | PIN (o/dia.)         | $\frac{0.624}{0.620}$    | 0.620                            | 0.618              |                          |                                  |         |
|        | 3    | BUSH (bore)          | $\frac{0.62575}{0.6245}$ | 0.6265                           | 0.6305             | $\frac{0.00575}{0.0005}$ | 0.0065                           |         |
|        | 2    | PIN (o/dia.)         | $\frac{0.624}{0.620}$    | 0.620                            | 0.618              |                          |                                  |         |

RESTRICTED

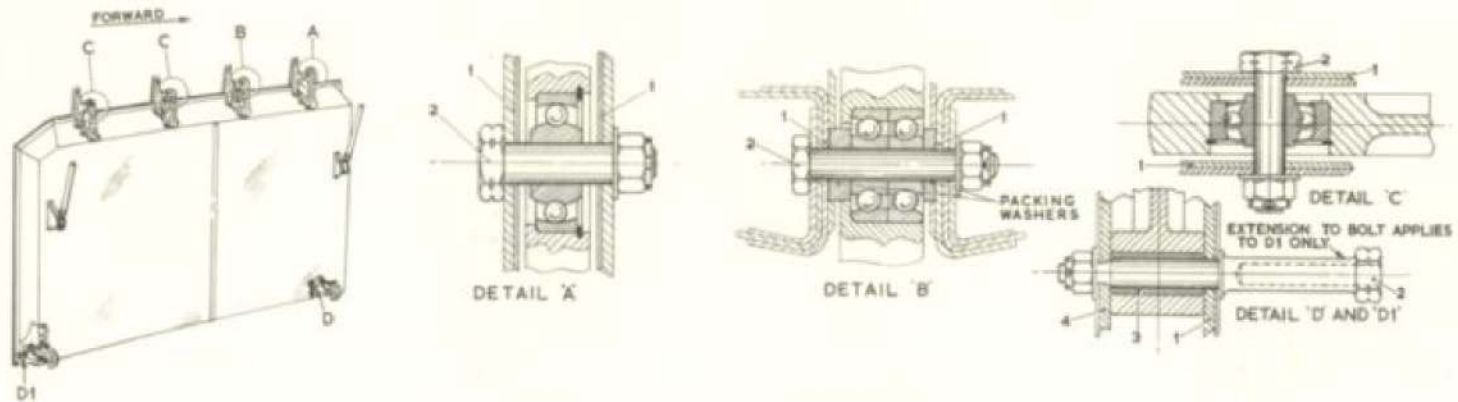


Fig.303. Main undercarriage door hinges and catch hooks

| Detail   | Item | Part and Description   | Dimension New (in.) | Permissible Worn Dimension (in.) |                    | Clearance New (in.) | Permissible Worn Clearance (in.) | Remarks |
|----------|------|------------------------|---------------------|----------------------------------|--------------------|---------------------|----------------------------------|---------|
|          |      |                        |                     | Non-selective Assembly           | Selective Assembly |                     |                                  |         |
| A        | 1    | HINGE BRACKET (bore)   | 0.5008<br>0.5003    | 0.5015                           | 0.502              | 0.0013<br>0.0003    | 0.002                            |         |
|          | 2    | BOLT (o/dia.)          | 0.5000<br>0.4995    | 0.4995                           | 0.4983             |                     |                                  |         |
| B        | 1    | HINGE BRACKET (bore)   | 0.3937<br>0.3933    | 0.394                            | 0.3947             | 0.0015<br>0.0006    | 0.002                            |         |
|          | 2    | BOLT (o/dia.)          | 0.3927<br>0.3922    | 0.392                            | 0.3913             |                     |                                  |         |
| C        | 1    | HINGE BRACKET (bore)   | 0.3758<br>0.3753    | 0.3764                           | 0.3769             | 0.0019<br>0.0009    | 0.0025                           |         |
|          | 2    | BOLT (o/dia.)          | 0.3744<br>0.3739    | 0.3739                           | 0.3728             |                     |                                  |         |
| D<br>D.1 | 1    | FULCRUM BRACKET (bore) | 0.3775<br>0.377     | 0.378                            | 0.379              | 0.003<br>0.002      | 0.004                            |         |
|          | 2    | BOLT (o/dia.)          | 0.375<br>0.3745     | 0.374                            | 0.373              |                     |                                  |         |
|          | 3    | BUSH (bore)            | 0.37525<br>0.37475  | 0.3755                           | 0.376              | 0.00075<br>-0.00025 | 0.001                            |         |
|          | 2    | BOLT (o/dia.)          | 0.375<br>0.3745     | 0.3745                           | 0.37375            |                     |                                  |         |
|          | 4    | FULCRUM BRACKET (bore) | 0.251<br>0.250      | 0.252                            | 0.253              | 0.003<br>0.001      | 0.004                            |         |
|          | 2    | BOLT (o/dia.)          | 0.249<br>0.248      | 0.248                            | 0.246              |                     |                                  |         |

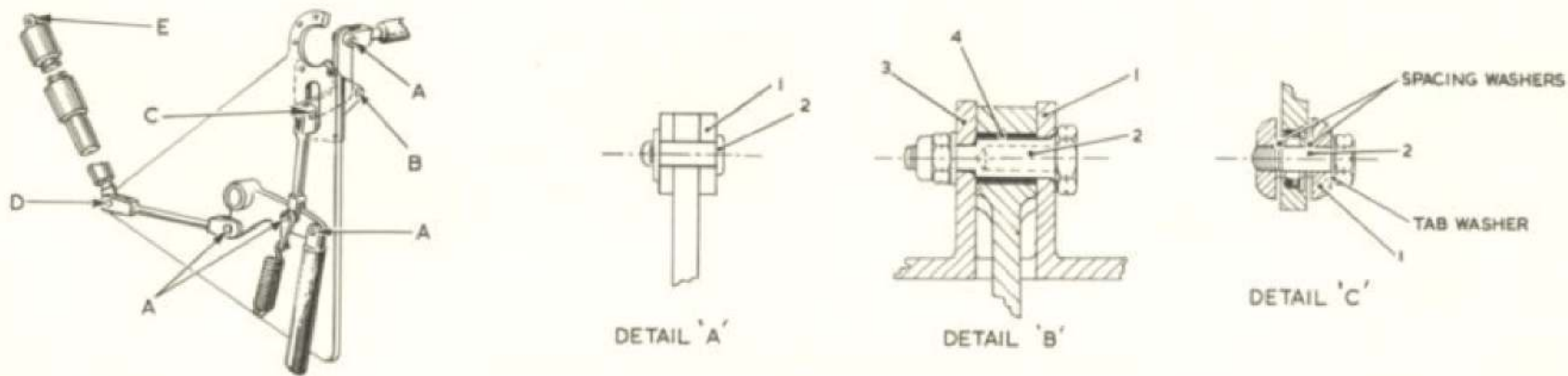


Fig. 303A Main undercarriage door mechanism

| Detail | Item | Part and Description | Dimension New (in.)     | Permissible Worn Dimension (in.) |                    | Clearance New (in.)     | Permissible Worn Clearance (in.) | Remarks |
|--------|------|----------------------|-------------------------|----------------------------------|--------------------|-------------------------|----------------------------------|---------|
|        |      |                      |                         | Non-selective Assembly           | Selective Assembly |                         |                                  |         |
| A      | 1    | FORK END (bore)      | $\frac{0.2505}{0.2495}$ | 0.251                            | 0.252              | $\frac{0.0025}{0.0005}$ | 0.003                            |         |
|        | 2    | PIN (o/dia.)         | $\frac{0.249}{0.248}$   | 0.248                            | 0.2465             |                         |                                  |         |
| B      | 1    | BRACKET (bore)       | $\frac{0.377}{0.3765}$  | 0.378                            | 0.379              | $\frac{0.0015}{0.0000}$ | 0.0025                           |         |
|        | 2    | BOLT (o/dia.)        | $\frac{0.3765}{0.3755}$ | 0.3755                           | 0.374              |                         |                                  |         |
|        | 3    | BRACKET (bore)       | $\frac{0.2505}{0.2495}$ | 0.251                            | 0.252              | $\frac{0.0025}{0.0005}$ | 0.003                            |         |
|        | 2    | BOLT (o/dia.)        | $\frac{0.249}{0.248}$   | 0.248                            | 0.2465             |                         |                                  |         |
|        | 4    | BUSH (bore)          | $\frac{0.3771}{0.3766}$ | 0.378                            | 0.379              | $\frac{0.0026}{0.0001}$ | 0.0035                           |         |
|        | 2    | BOLT (o/dia.)        | $\frac{0.3765}{0.3745}$ | 0.3745                           | 0.3731             |                         |                                  |         |
| C      | 1    | LINK (bore)          | $\frac{0.2505}{0.2495}$ | 0.251                            | 0.252              | $\frac{0.0025}{0.0005}$ | 0.003                            |         |
|        | 2    | BOLT (o/dia.)        | $\frac{0.249}{0.248}$   | 0.248                            | 0.2465             |                         |                                  |         |

RESTRICTED

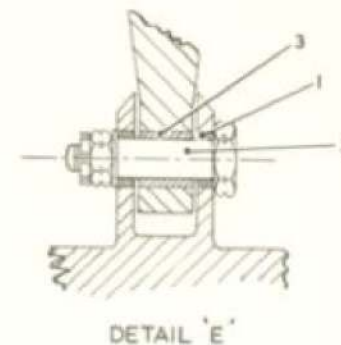
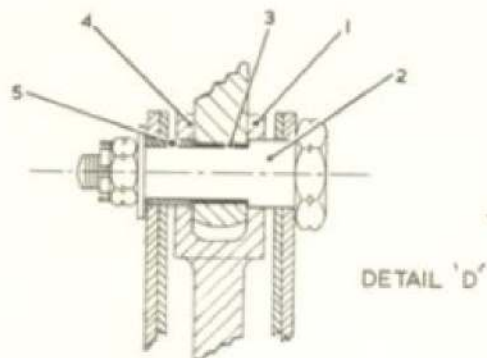


Fig.303B. Main undercarriage door mechanism

| Detail | Item | Part and Description | Dimension New (in.) | Permissible Worn Dimension (in.) |                    |                    | Clearance New (in.) | Permissible Worn Clearance (in.) | Remarks |
|--------|------|----------------------|---------------------|----------------------------------|--------------------|--------------------|---------------------|----------------------------------|---------|
|        |      |                      |                     | Non-selective Assembly           | Selective Assembly |                    |                     |                                  |         |
| D      | 1    | LINK (bore)          | 0.62575<br>0.6245   | 0.6267                           | 0.62825            |                    |                     |                                  |         |
|        | 2    | BOLT (o/dia.)        | 0.62375<br>0.62225  | 0.6222                           | 0.620              | 0.0035<br>0.00075  | 0.0045              |                                  |         |
|        | 3    | BUSH (bore)          | 0.5005<br>0.4995    | 0.5005                           | 0.5005             |                    |                     |                                  |         |
|        | 2    | BOLT (o/dia.)        | 0.499<br>0.498      | 0.4975                           | 0.4965             | 0.0025<br>0.0005   | 0.003               |                                  |         |
|        | 4    | LINK (bore)          | 0.62575<br>0.6245   | 0.6267                           | 0.62825            |                    |                     |                                  |         |
|        | 5    | BUSH (o/dia.)        | 0.62375<br>0.62225  | 0.6222                           | 0.620              | 0.0035<br>0.00075  | 0.0045              |                                  |         |
| E      | 1    | BUSH (bore)          | 0.3755<br>0.3745    | 0.3755                           | 0.3755             |                    |                     |                                  |         |
|        | 2    | BOLT (o/dia.)        | 0.37425<br>0.37375  | 0.373                            | 0.372              | 0.00175<br>0.00025 | 0.0025              |                                  |         |
|        | 3    | BUSH (bore)          | 0.3755<br>0.3745    | 0.376                            | 0.37725            |                    |                     |                                  |         |
|        | 2    | BOLT (o/dia.)        | 0.37425<br>0.37375  | 0.373                            | 0.3715             | 0.00175<br>0.00025 | 0.003               |                                  |         |

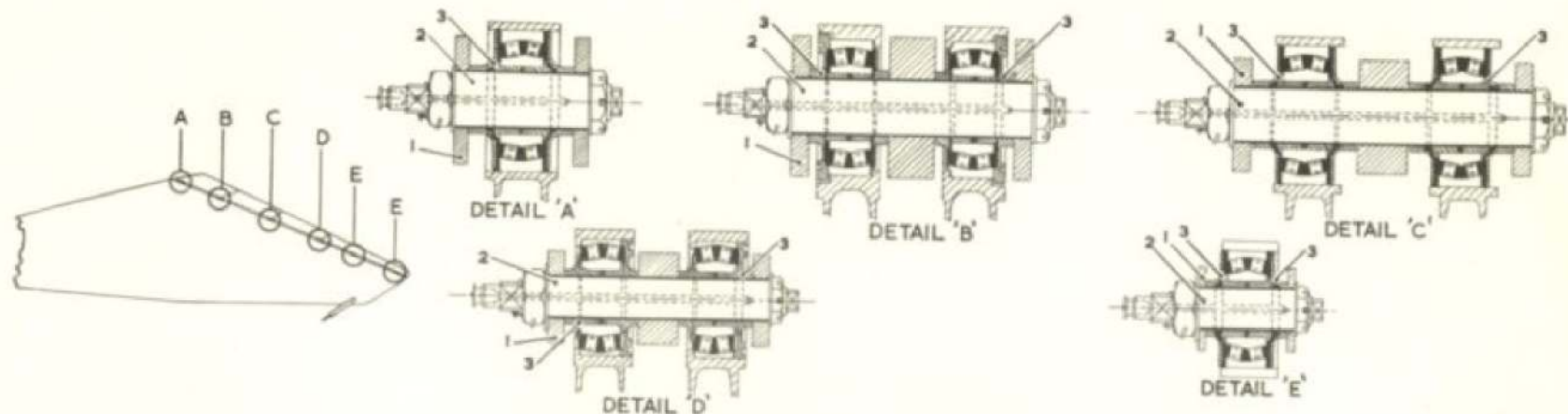
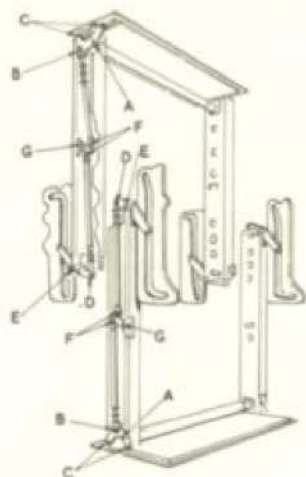


Fig.304. Elevator and aileron hinges

| Detail      | Item | Part and Description | Dimension New (in.)       | Permissible Worn Dimension (in.) |                    |                          | Permissible Worn Clearance (in.) | Remarks |
|-------------|------|----------------------|---------------------------|----------------------------------|--------------------|--------------------------|----------------------------------|---------|
|             |      |                      |                           | Non-selective Assembly           | Selective Assembly | Clearance New (in.)      |                                  |         |
| A<br>B<br>C | 1    | BRACKET (bore)       | $\frac{1.0005}{0.99975}$  | 1.00075                          | 1.00125            | $\frac{0.00175}{0.0005}$ | 0.002                            |         |
|             | 2    | BOLT (o/dia.)        | $\frac{0.99925}{0.99875}$ | 0.99875                          | 0.99775            |                          |                                  |         |
|             | 3    | BUSH (bore)          | $\frac{1.0005}{0.99975}$  | 1.00125                          | 1.00175            |                          |                                  |         |
|             | 2    | BOLT (o/dia.)        | $\frac{0.99925}{0.99875}$ | 0.99875                          | 0.99725            | $\frac{0.00175}{0.0005}$ | 0.0025                           |         |
| D<br>E      | 1    | BRACKET (bore)       | $\frac{0.7505}{0.74975}$  | 0.75075                          | 0.75125            | $\frac{0.00175}{0.0005}$ | 0.002                            |         |
|             | 2    | BOLT (o/dia.)        | $\frac{0.74925}{0.74875}$ | 0.74875                          | 0.74775            |                          |                                  |         |
|             | 3    | BUSH (bore)          | $\frac{0.7505}{0.74975}$  | 0.75125                          | 0.75175            |                          |                                  |         |
|             | 2    | BOLT (o/dia.)        | $\frac{0.74925}{0.74875}$ | 0.74875                          | 0.74725            | $\frac{0.00175}{0.0005}$ | 0.0025                           |         |



EXISTING WASHERS  
AT THESE POINTS  
MUST BE REFITTED  
ON ASSEMBLY

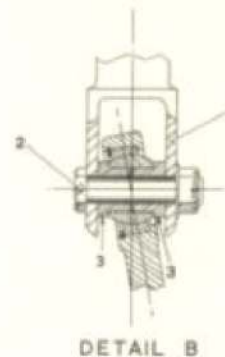
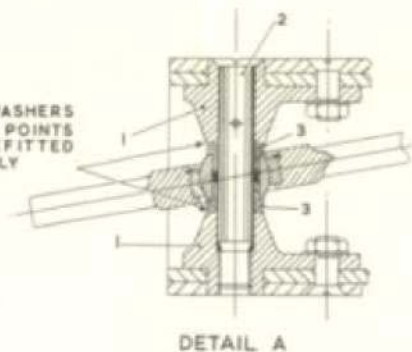


Fig.305. Air brake mechanism

| Detail | Item | Part and Description | Dimension New (in.)     | Permissible Worn Dimension (in.) |                    | Clearance New (in.)      | Permissible Worn Clearance (in.) | Remarks |
|--------|------|----------------------|-------------------------|----------------------------------|--------------------|--------------------------|----------------------------------|---------|
|        |      |                      |                         | Non-selective Assembly           | Selective Assembly |                          |                                  |         |
| A      | 1    | BRACKET (bore)       | $\frac{0.4395}{0.4375}$ | 0.440                            | 0.4407             | $\frac{0.0028}{0.0003}$  | 0.0035                           |         |
|        | 2    | BOLT (o/dia.)        | $\frac{0.4372}{0.4367}$ | 0.4365                           | 0.434              |                          |                                  |         |
|        | 3    | BUSH (bore)          | $\frac{0.438}{0.437}$   | 0.4385                           | 0.4392             | $\frac{0.0013}{-0.0002}$ | 0.002                            |         |
|        | 2    | BOLT (o/dia.)        | $\frac{0.4372}{0.4367}$ | 0.4365                           | 0.435              |                          |                                  |         |
| B      | 1    | FORK-END (bore)      | $\frac{0.3145}{0.3125}$ | 0.315                            | 0.3157             | $\frac{0.0028}{0.0003}$  | 0.0035                           |         |
|        | 2    | BOLT (o/dia.)        | $\frac{0.3122}{0.3117}$ | 0.3115                           | 0.309              |                          |                                  |         |
|        | 3    | BUSH (bore)          | $\frac{0.313}{0.312}$   | 0.3135                           | 0.3142             | $\frac{0.0013}{-0.0002}$ | 0.002                            |         |
|        | 2    | BOLT (o/dia.)        | $\frac{0.3122}{0.3117}$ | 0.3115                           | 0.310              |                          |                                  |         |

RESTRICTED

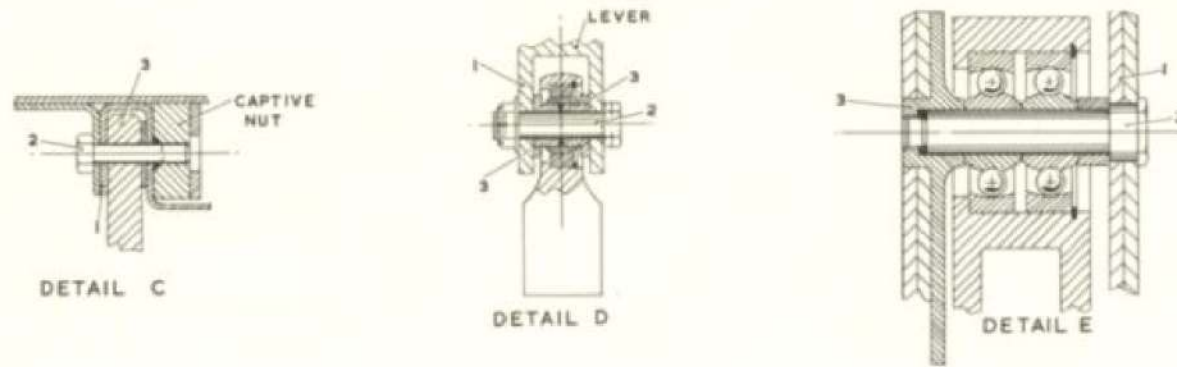


Fig.305A. Air brake mechanism

| Detail | Item | Part and Description | Permissible Worn Dimension (in.) |                        |                    |                           | Remarks |
|--------|------|----------------------|----------------------------------|------------------------|--------------------|---------------------------|---------|
|        |      |                      | Dimension New (in.)              | Non-selective Assembly | Selective Assembly | Clearance New (in.)       |         |
| C      | 1    | CHANNEL (bore)       | $\frac{0.252}{0.250}$            | 0.25275                | 0.25325            | $\frac{0.00275}{0.00025}$ | 0.0035  |
|        | 2    | BOLT (o/dia.)        | $\frac{0.24975}{0.24925}$        | 0.24925                | 0.2465             |                           |         |
|        | 3    | LEVER (bore)         | $\frac{0.252}{0.250}$            | 0.25275                | 0.25325            | $\frac{0.00275}{0.00025}$ | 0.0035  |
|        | 2    | BOLT (o/dia.)        | $\frac{0.24975}{0.24925}$        | 0.24925                | 0.2465             |                           |         |
| D      | 1    | LEVER (bore)         | $\frac{0.313}{0.312}$            | 0.3135                 | 0.3142             | $\frac{0.0013}{-0.0002}$  | 0.002   |
|        | 2    | BOLT (o/dia.)        | $\frac{0.3122}{0.3117}$          | 0.3115                 | 0.310              |                           |         |
|        | 3    | BUSH (bore)          | $\frac{0.313}{0.312}$            | 0.3135                 | 0.3142             | $\frac{0.0013}{-0.0002}$  | 0.002   |
|        | 2    | BOLT (o/dia.)        | $\frac{0.3122}{0.3117}$          | 0.3115                 | 0.310              |                           |         |
| E      | 1    | SIDE MEMBER (bore)   | $\frac{0.6258}{0.6245}$          | 0.6262                 | 0.6267             | $\frac{0.0016}{-0.0002}$  | 0.002   |
|        | 2    | BOLT (o/dia.)        | $\frac{0.6247}{0.6242}$          | 0.6242                 | 0.6225             |                           |         |
|        | 3    | BOSS (bore)          | $\frac{0.5005}{0.4995}$          | 0.501                  | 0.5017             | $\frac{0.0013}{-0.0002}$  | 0.002   |
|        | 2    | BOLT (o/dia.)        | $\frac{0.4997}{0.4992}$          | 0.499                  | 0.4975             |                           |         |

RESTRICTED

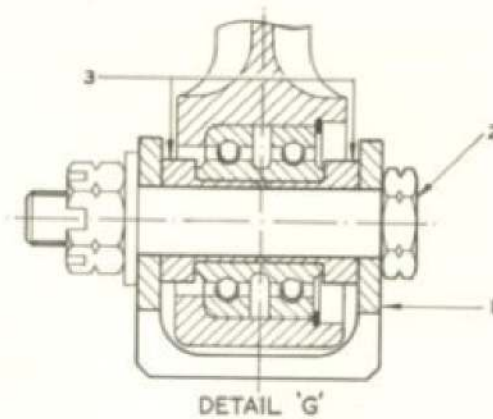
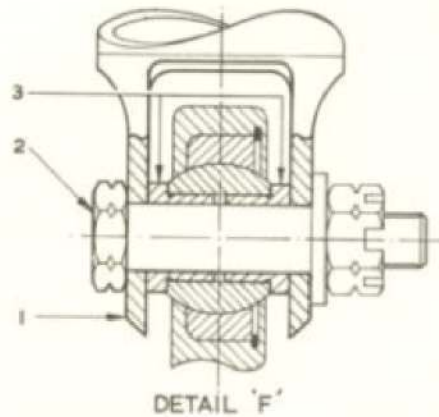



Fig.305B. Air brake mechanism

| Detail | Item | Part and Description | Dimension New (in.)     | Permissible Worn Dimension (in.) |                    | Clearance New (in.)      | Permissible Worn Clearance (in.) | Remarks |
|--------|------|----------------------|-------------------------|----------------------------------|--------------------|--------------------------|----------------------------------|---------|
|        |      |                      |                         | Non-selective Assembly           | Selective Assembly |                          |                                  |         |
| F      | 1    | FORK-END (bore)      | $\frac{0.3145}{0.3125}$ | 0.315                            | 0.3157             | $\frac{0.0028}{0.0003}$  | 0.0035                           |         |
|        | 2    | BOLT (o/dia.)        | $\frac{0.3122}{0.3117}$ | 0.3115                           | 0.309              |                          |                                  |         |
|        | 3    | BUSH (bore)          | $\frac{0.313}{0.312}$   | 0.3135                           | 0.3142             | $\frac{0.0013}{-0.0002}$ | 0.002                            |         |
|        | 2    | BOLT (o/dia.)        | $\frac{0.3122}{0.3117}$ | 0.3115                           | 0.310              |                          |                                  |         |
| G      | 1    | BRACKET (bore)       | $\frac{0.313}{0.312}$   | 0.3135                           | 0.3142             | $\frac{0.0013}{-0.0002}$ | 0.002                            |         |
|        | 2    | BOLT (o/dia.)        | $\frac{0.3122}{0.3117}$ | 0.3115                           | 0.310              |                          |                                  |         |
|        | 3    | BUSH (bore)          | $\frac{0.313}{0.3125}$  | 0.3135                           | 0.3142             | $\frac{0.0013}{-0.0003}$ | 0.002                            |         |
|        | 2    | BOLT (o/dia.)        | $\frac{0.3122}{0.3117}$ | 0.3115                           | 0.3105             |                          |                                  |         |

RESTRICTED



This file was downloaded  
from the RTFM Library.

Link: [www.scottbouch.com/rtfm](http://www.scottbouch.com/rtfm)

Please see site for usage terms,  
and more aircraft documents.